

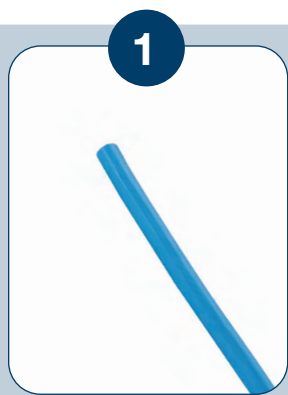
Easy Connection of Indoor Network Cameras!



Connecting indoor cameras to Ethernet network cabling is easy using Panduit Field Term Plugs!



Easy to Attach Field Term Plug



Loose cable end



Strip cable and attach wire cap



Insert wire cap into plug housing and snap together



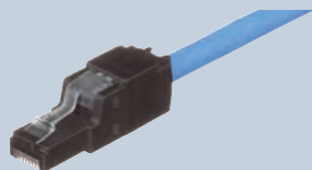
Plug is ready

Panduit Field Term Plug Options

Made for easy on-site connection of network cabling

- Simple 2-piece plug assembly
- Install reliably in 60 seconds or less
- All plugs work with Category 5e, 6 and Category 6A cables
- Can re-terminate up to 20 times

Plugs for Unshielded (UTP) Cabling Installs



Straight UTP Plug (FP6X88MTG)



45° Angled UTP Plug (FPUD6X88MTG)

Plug for Shielded Cabling Installs



Straight Shielded Plug (FPS6X88MTG)

Accessories



Termination Tool (EGPT)

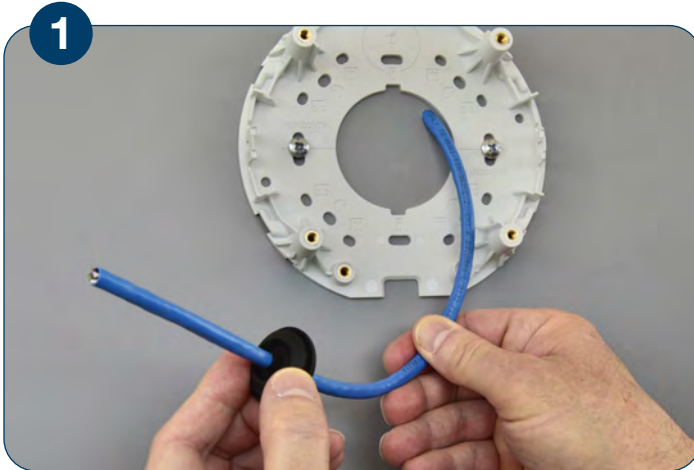


Test Cord (FP6X88TC)

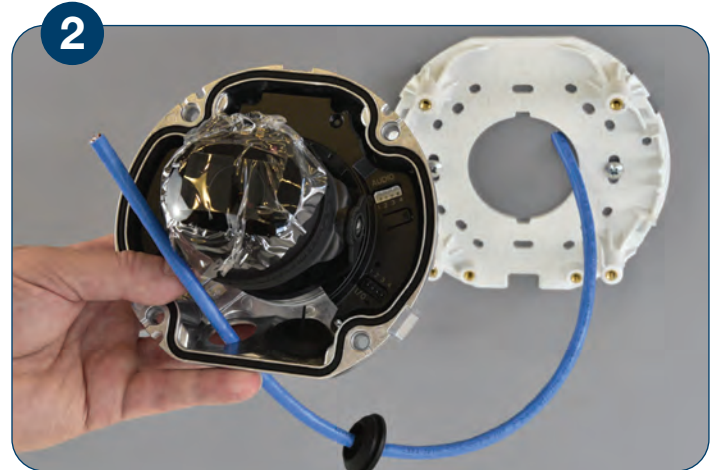


AXIS® P3245-LV Example

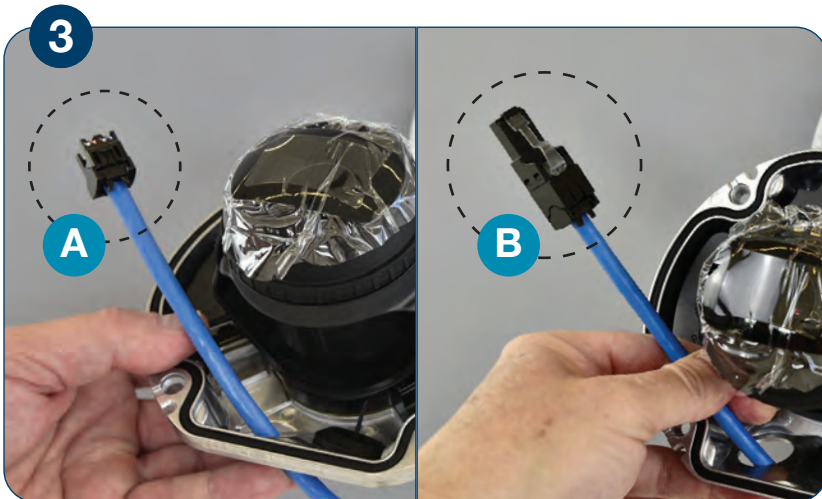
- Example shows cabling fed from behind mounting bracket
- Cabling fed from side of camera (direct or in conduit) is similar



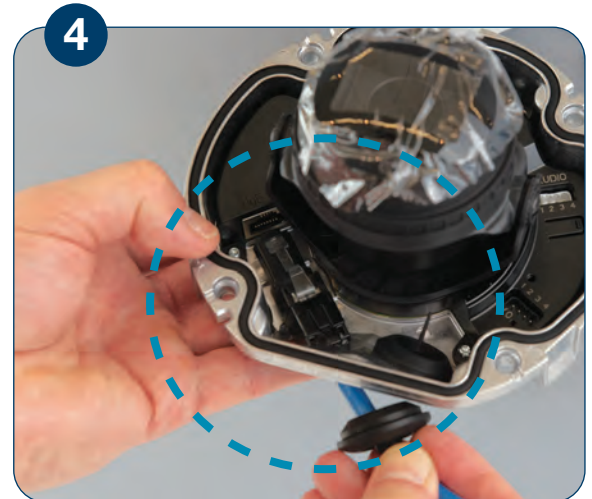
1 Locate cable stub and slide grommet over.



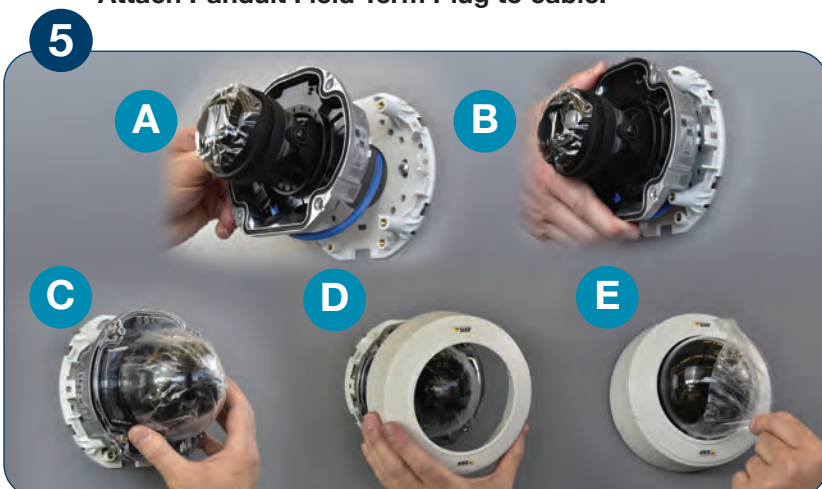
2 Insert cable stub through opening in camera.



3 Attach Panduit Field Term Plug to cable.



4 Insert Plug into port and place grommet into camera unit.



5 Route cable to avoid bends, mount camera and apply cover.

IMPORTANT

- Follow the AXIS P3245-LV Installation guide for detailed instructions
- Follow Panduit TX6A Field Term Plug detailed installation instructions



PANDUIT®

www.panduit.com