

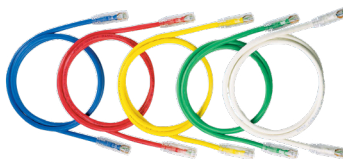
# NetKey™ Category 6A STP Patch Cords

Asia Pacific

**PANDUIT**™  
SPECIFICATION SHEET

## SPECIFICATIONS

Category 6A/Class EA STP; patch cords shall be constructed of 26 AWG shielded twisted pair stranded copper cable with a STP modular plug on each end. Patch cords shall be offered in multiple colored STP cable for design flexibility with a strain relief boot on each modular plug. All patch cords shall be wired to be compatible with both T568A and T568B wiring schemes.



## TECHNICAL INFORMATION

<b>Category 6A/Class E<sub>A</sub> performance:</b>	Exceeds ANSI/TIA-568.2-D Category 6A and ISO 11801 Class E <sub>A</sub> channel requirements at swept frequencies up to 500 MHz Meets ANSI/TIA-568.2-D and ISO 11801 Category 6 component requirements at swept frequencies up to 250 MHz
<b>FCC compliance:</b>	Complies with ANSI/TIA-1096-A (formerly FCC Part 68); contacts plated with 50 microinches of gold for superior performance
<b>IEC compliance:</b>	Meets IEC 60603-7
<b>PoE compliance:</b>	Supports IEEE 802.3af/802.3at and 802.3bt type 3 and type 4 PoE applications
<b>c(UL)us compliance:</b>	UL 1863 and CAN/CSA-C22.2 (UL File E129886)
<b>RoHS compliance:</b>	Compliant
<b>Cable diameter:</b>	6.4mm nominal
<b>Flame rating:</b>	CM/LSZH dual rated

## KEY FEATURES AND BENEFITS

<b>100% Performance tested for wire map, NEXT, and return loss:</b>	Confidence that each patch cord delivers specified performance
<b>Integral pair manager:</b>	Optimizes performance and consistency by reducing untwist at plug
<b>Patented tangle free latch:</b>	Prevents snags and provides easy release saving time on frequent moves, adds, and changes
<b>Slender strain relief boot:</b>	Provides easy access in high-density applications
<b>Identification:</b>	Provides identification of performance level, length, and quality control number for future traceability
<b>Variety of colors and lengths available:</b>	Meets individual length and color-coding requirements

## APPLICATIONS

The NetKey Category 6A STP Patch Cords are a component of the NetKey Category 6A Copper Cabling System. Interoperable and backward compatible, this end-to-end system provides design flexibility to protect network investments well into the future. Key applications include:

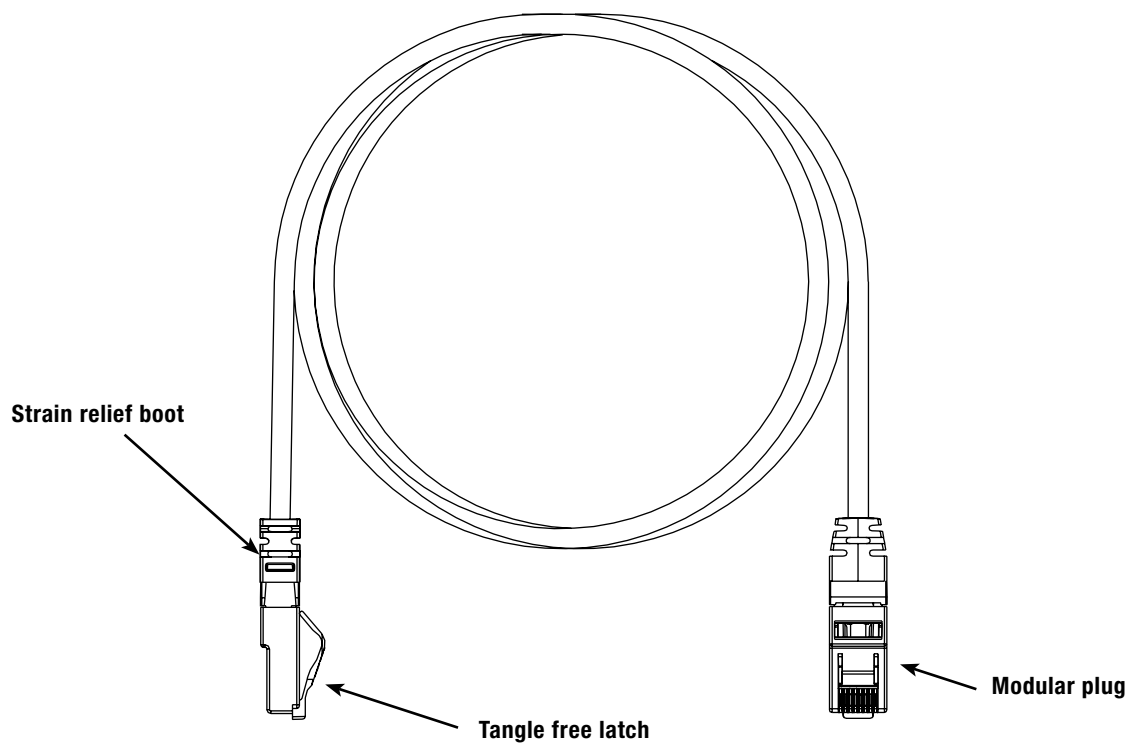
- 10GBASE-T Ethernet
- Wireless deployment
- Power over Ethernet
- Video streaming

### NetKey Category 6A STP Patch Cords

**Meter lengths:** NK6APC^M\*\*

^Meter Lengths: 1, 2, 3, 5, 10, 15, 20, 30  
\*\*Color: BU (Blue), BL (Black), GR (Green), GY (Gray), RD, (Red), and YL (Yellow)

# NetKey™ Category 6A STP Patch Cords



---

## WORLDWIDE SUBSIDIARIES AND SALES OFFICES

PANDUIT US/CANADA  
Phone: 800.777.3300

PANDUIT EUROPE LTD.  
London, UK  
Phone: 44.20.8601.7200

PANDUIT SINGAPORE PTE. LTD.  
Republic of Singapore  
Phone: 65.6305.7575

PANDUIT JAPAN  
Tokyo, Japan  
Phone: 81.3.6863.6000

PANDUIT LATIN AMERICA  
Guadalajara, Mexico  
Phone: 52.33.3777.6000

PANDUIT AUSTRALIA PTY. LTD.  
Victoria, Australia  
Phone: 61.3.9794.9020

For a copy of Panduit product warranties, log on to [www.panduit.com/warranty](http://www.panduit.com/warranty)

**PANDUIT**™

For more information  
**Visit us at [www.panduit.com](http://www.panduit.com)**  
Contact Customer Service by email: [cs@panduit.com](mailto:cs@panduit.com)  
or by phone: 800.777.3300

© 2023 Panduit Corp.  
ALL RIGHTS RESERVED.  
COSP565-WW-ENG  
11/2023