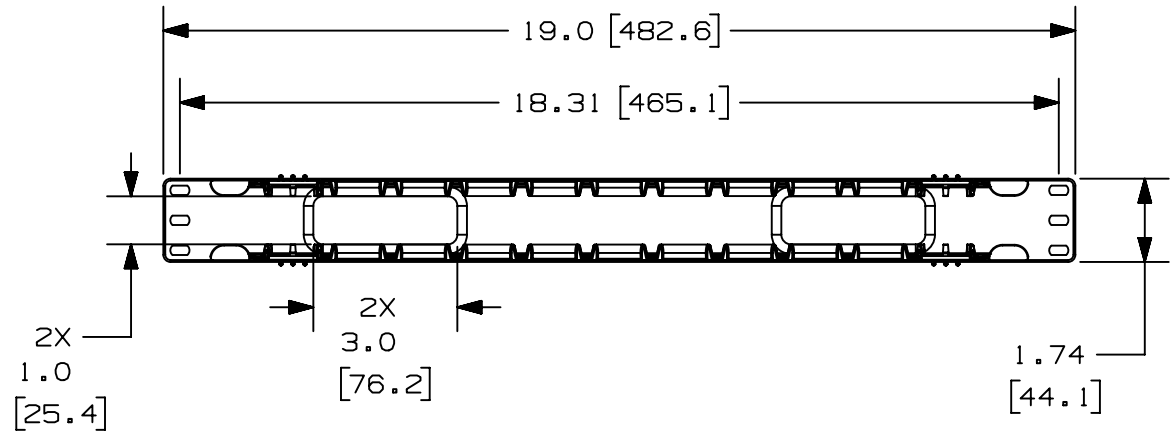


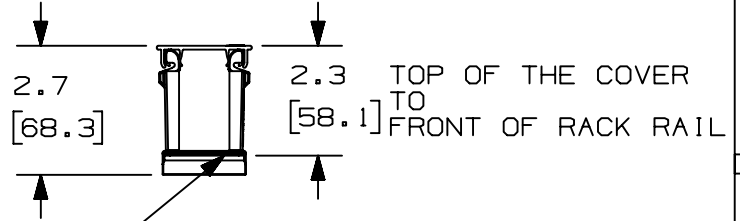
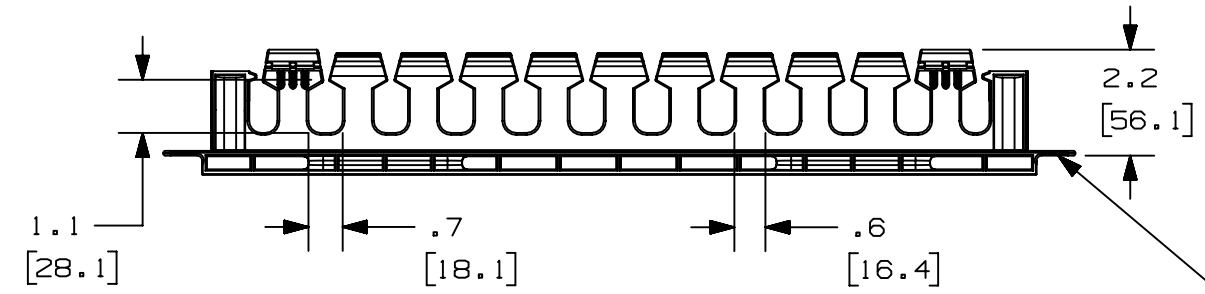
THIS COPY IS PROVIDED ON A RESTRICTED BASIS AND IS NOT TO BE USED IN ANY WAY DETRIMENTAL TO THE INTERESTS OF PANDUIT CORP.



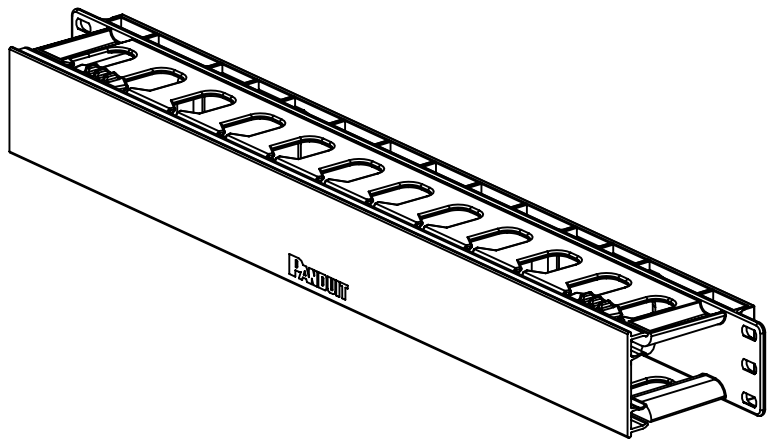
PANDUIT P/N	WEIGHT
WMPLFSE	.7 lbs/EACH 317 g/EACH

- NOTES:
- DESIGNED FOR MOUNTING ON 19" EIA RACKS.
 - COMPONENTS:
1- MANAGER
1- 17" DUAL HINGED COVER
4- #12-24 x 1/2" SCREWS
 - DIMENSIONS IN PARENTHESES ARE METRIC.

MAX STORAGE TEMPERATURE 65°C (149°F)
MAX OPERATING TEMPERATURE 60°C (140°F)



SURFACE IN CONTACT WITH FRONT OF THE RACK RAIL



TITLE												
WMPLFSE HORIZONTAL MANAGER												
CUSTOMER DRAWING												
ITEM REVISION NAME					V10101LF/09							
DATASET FILE NAME					V10101LF_DC/09A							
					THIRD ANGLE PROJECTION							
MATERIAL					ABS							
DRAWING NUMBER					10101-20							
REV	DATE	BY	CHK	APR	DESCRIPTION	ECN	DRAWN BY	DATE	CHK	SCALE	SHEET 1 OF 1	SIZE
09A	3-23-23	JBO	KRKE	KCOR	UPDATED COVER TO CURRENT LOGO	M09000SE	JDWE	12-17-02	MECA	NONE		A

A-SIZE CUSTOMER