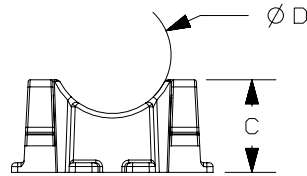
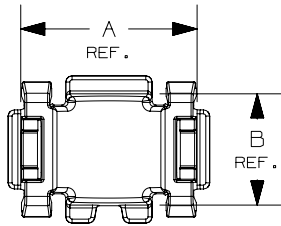


THIS COPY IS PROVIDED ON A RESTRICTED BASIS AND IS NOT TO BE USED IN ANY WAY DETRIMENTAL TO THE INTERESTS OF PANDUIT CORP.

△ A △ D △ E △ F

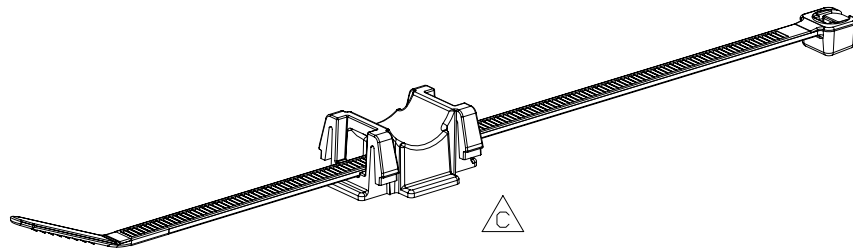
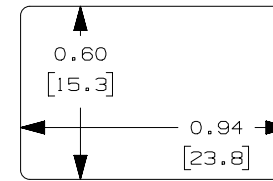
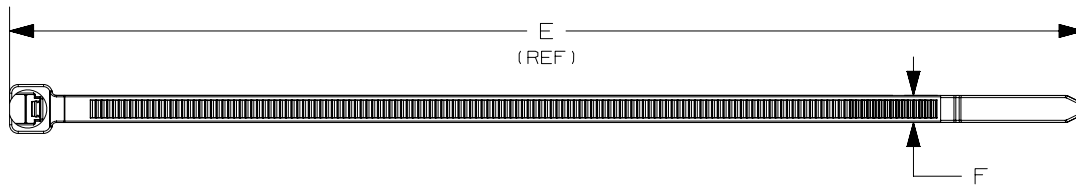
PANDUIT PART NUMBER	DIMENSIONS						WEIGHT grams/100pcs
	A	B	C	D	E	F	
TCM1X63-2S-D350	0.94 (23.8)	0.60 (15.3)	0.48 (12.2)	0.63 (16.0)	7.4 (188)	.190 (4.8)	330



△ B △ G △ H

NOTES:

- PRE-ASSEMBLED WITH PLT2S CABLE TIE WITH MIN. LOOP TENSILE STRENGTH OF 50 LBS (222N)
- MATERIAL:
 - CABLE TIE: HEAT STABILIZED, WEATHER RESISTANT NYLON 6.6 (-300)
 - PUSH-IN MOUNT: HEAT STABILIZED, WEATHER RESISTANT, IMPACT MODIFIED NYLON 6.6 (-350)
- THE MOUNT IS DESIGNED TO SEAT WITHIN A USER SUPPLIED BRACKET OR PANEL. APPLICATION SPECIFICATION:
 - POCKET/CUTOUT DIMENSIONS: 0.94" X 0.60" (23.8mm X 15.3mm)
 - BRACKET/PANEL THICKNESS: 0.08" - 0.12" (2.0mm - 3.0mm)



- DIMENSIONAL VARIANCE IS POSSIBLE DUE TO MOLDING PROCESS RELATED SINK MARKS.

△ I △ J

TITLE	
PUSH-IN MOUNT & CABLE TIE ASSEMBLY	
CUSTOMER DRAWING	
ITEM REVISION NAME	00887EAB/03
DATASET FILE NAME	00887EAB_DC/03
UNLESS OTHERWISE SPECIFIED, DIMENSIONAL TOLERANCES ARE: IN (mm)	
.x ± .1 [2.54]	.xxx ± .005 [.127]
.xx ± .01 [.25]	ANGLES ± 1°
THIRD ANGLE PROJECTION	
DRAWING NUMBER: 00887EAB_DC	
DRAWN BY	DATE
DJSL	2/4/21
CHK	SCALE
LAH	FULL
ECN	SHT 1 OF 1
REV	SIZE
	A

REV	DATE	BY	CHK	APR	DESCRIPTION	ECN
03A	4-25-23	MDS	DAEI	DJSL	J. CHANGED MATERIAL IN TITILE BLOCK TO "SEE NOTES" I. CHANGED DRAWING TITLE H. MODIFIED NOTES G. REMOVED "0.03R" DIMENSION FROM CUTOUT VIEW F. REMOVED "USE WITH CABLE TIE" COLUMN E. REMOVED "CABLE TIE" COLUMN	1005429/01
02	2-24-21	DJSL	LAH	ALP	D. UPDATED DIM C, WEIGHT AND ADDED CABLE TIE USE C. GEOMETRY UPDATE	1005429/00
01	2-11-21	DJSL		ALP	B. UPDATED DIMENSIONS FOR NOTE 2. A. UPDATED DIM A & B AND WEIGHT.	
00	2-4-21	DJSL		ALP	DRAWING RELEASED	