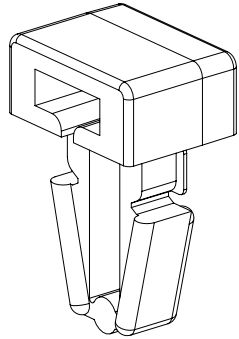
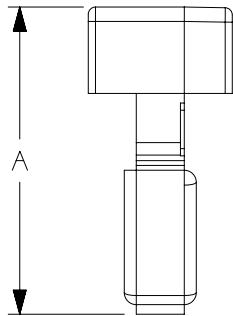
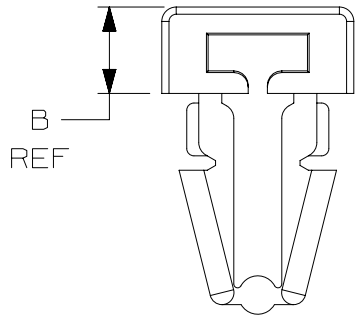
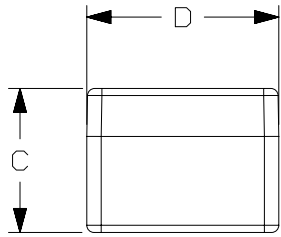


THIS COPY IS PROVIDED ON A RESTRICTED BASIS AND IS NOT TO BE USED IN ANY WAY DETRIMENTAL TO THE INTERESTS OF PANDUIT CORP.



PANDUIT PART NO.	USE WITH THESE CABLE TIE CROSS-SECTIONS	DIMENSIONS				WEIGHT g/100pcs
		A	B	C	D	
PM2H25	MINIATURE INTERMEDIATE STANDARD	.62 (15.8)	.18 (4.6) REF	.30 (7.6)	.38 (9.6)	.10 (.45)



NOTES:

- SEE CURRENT PRICE SHEET FOR PART NUMBER SUFFIX DESIGNATION FOR PACKAGE SIZE, AND COLOR.
- (*) DIMENSIONAL VARIANCE IS POSSIBLE DUE TO MOLDING PROCESS RELATED SINK MARKS.
- APPLICATION SPECIFICATION:
HOLE DIAMETER: .245 (6.3) - .255 (6.5)
PANEL THICKNESS: .125 (3.2) (MAX)
- BAG MAY CONTAIN EXTRA PIECES TO COMPENSATE FOR VARIANCE IN THE PACKAGING PROCESS. PANDUIT ASSURES MINIMUM PIECE COUNT AS STATED ON THE BAG.

REV	DATE	BY	CHK	APR	DESCRIPTION	ECN
05A	2/16/2022	RVU	JADE	RMHI	REBUILD MODEL AND NAMING FILENAME MATCHED.	GAECN06149
04	12/7/2020	RVU	JADE	RMHI	ADDED NOTE 4.	GAECN05828
03	5/27/08	DJSM			CORRECTED FILE NAME.	GB0239IJ
02	5/22/08	DJSM			TABULARIZED DIMENSIONS, REMOVED WINDOW DIMENSIONS.	GB0239IJ
01	02/05/03	MSAD			.070 +/--.015 WAS .070 +/--.010 (1.8 +/-0.38) (1.8 +/-0.25).	GB0239IJ
R	01/10/02	LGG			INITIAL RELEASE.	GB0239IJ

TITLE					
Cable Tie Mount Push Mount CUSTOMER DRAWING					
ITEM REVISION NAME			G0359710/05		
DATASET FILE NAME			G0359710_DC/05A GB0239IJ r05A CUST DWG		
UNLESS OTHERWISE SPECIFIED, DIMENSIONAL TOLERANCES ARE: IN [mm]					
.x ± 0.05 [1.3]		.xxx ± 0.010 [0.25]		MATERIAL:	
.xx ± 0.02 [0.5]		ANGLES ± 5 °		NYLON 6/6	
				DRAWING NUMBER:	
THIRD ANGLE PROJECTION				GB0239IJ	
DRAWN BY	DATE	CHK	SCALE	SIZE	
LGG	01/20/02	JADE	5:2	SHT 1 OF 1	A

D10100DA/20