

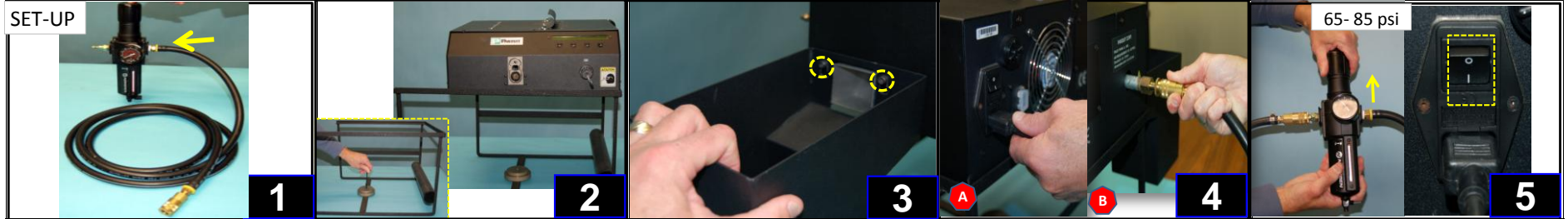
### Quick Start Reference

### Part Number >> PAT2S Setup, Loading and Operation

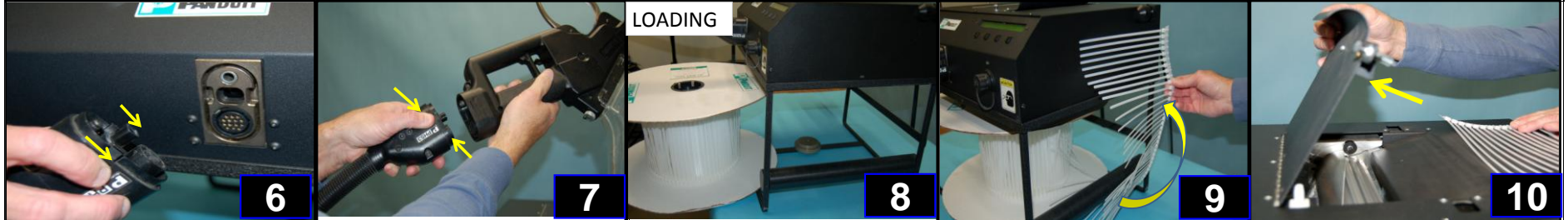
- 1- Attach PL283N1 regulator to the PDH10-37 hose.
- 2- Tighten the reel mounting disc to the frame. Set the dispenser on top of the frame.
- 3- Mount scrap bin to the side of the dispenser. Place holes on bin over the screws and secure.

- 4- Connect power cord(A) and air hose (B) to dispenser.
- 5- Adjust regulator. Pull cap on air regulator and twist knob +/- to 65 to 85 psi. Power unit ON.

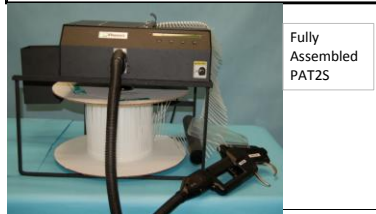
#### SET-UP



- 6- Connect hose to the outlet in front of the dispenser. Press the tabs on each side of the hose and insert into the tool.
- 7- Attach hand tool to hose. Press the tabs on each side of the hose and insert into the tool.
- 8- Slide reel of cable ties (label facing up) onto the reel mounting disk.
- 9- Grab end of the strip with heads facing downward.
- 10- Wrap ties around the take up bar so that heads are facing upward. Open door and feed ties.



- 11- Apply pressure while sliding the ties into the first slot of the rotary receiver (aluminum roller).
- 12- Close door. Press and hold load button until (9) ties are automatically cycled through the unit.
- 13- Place bundle in the center of the jaws, press and hold trigger until tool completes cycle.
- 14- Adjust tension knob +/- for desired tension. Loosen locking screw, turn tension knob then tighten screw at 6:00 position.
- 15- Slide tip collector forward to remove and empty tie waste.



Fully Assembled PAT2S

#### Equipment Needed:

- PAT2S
- Power Cord
- PLT1M-XMR
- Operation Manual
- PDH10-37 Hose
- PL283N1 Regulator

#### Tools Needed:

- Metric Allen wrenches (Set)
- Adjustable wrench
- Side cutters

#### Safety Equipment

- Glasses 