

TX6A™ Shielded Field Term RJ45 Plug

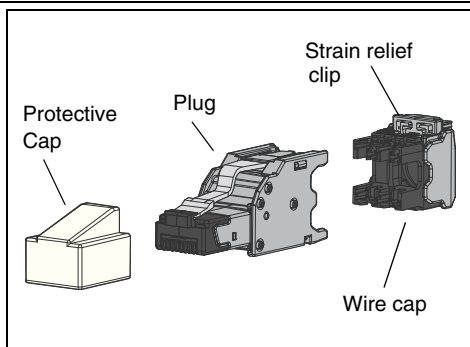


Part Number: FPS6X88MTG, FPS6X88MTG-X, CPSCAPBL-X

© Panduit Corp. 2018

INSTALLATION INSTRUCTIONS

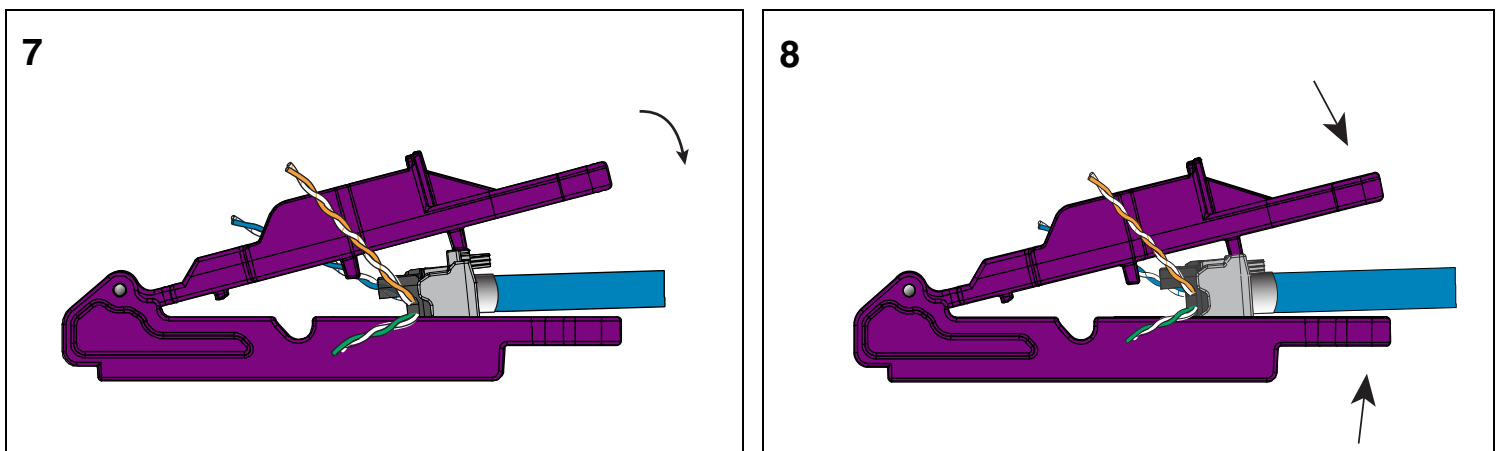
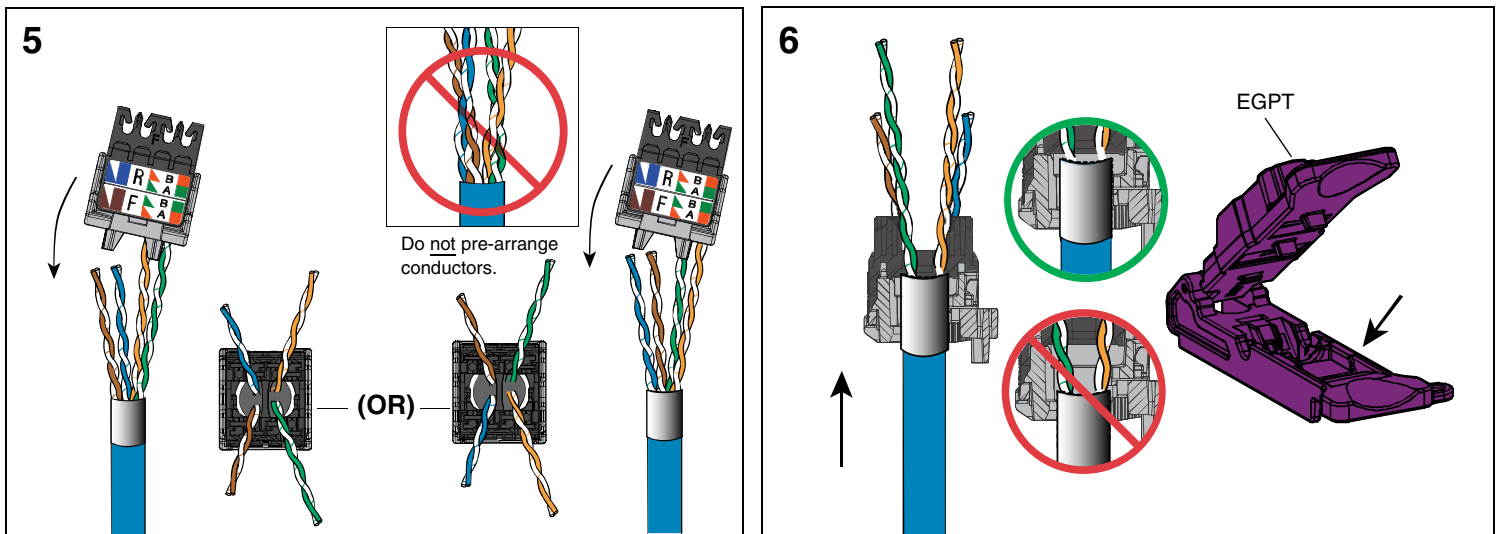
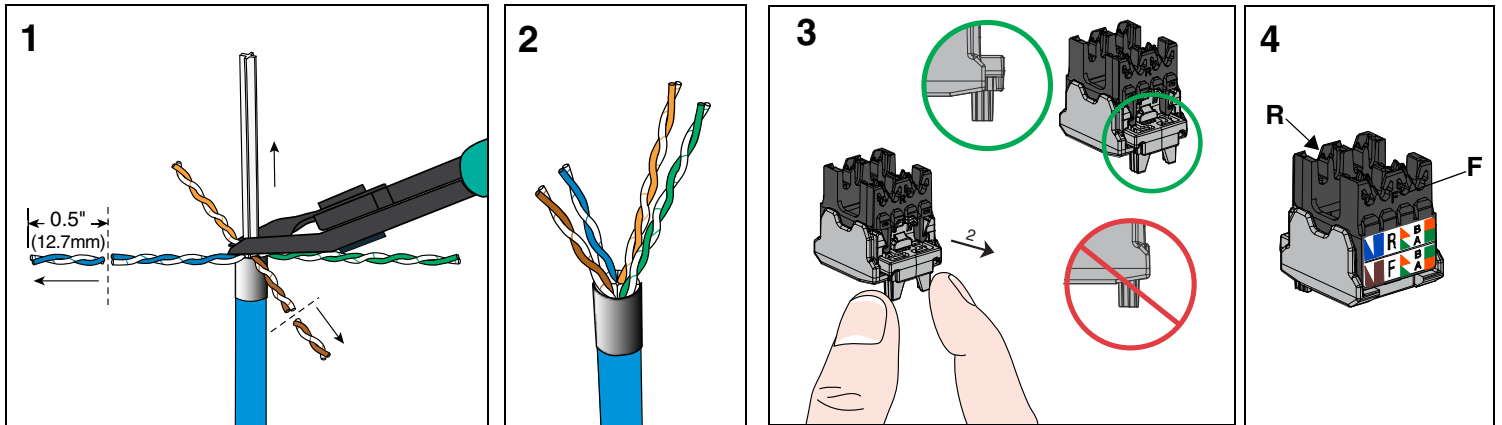
PN635



CABLE PREPARATION STEPS

S/FTP Individual foil pair screen Conductors Braid	
SF/UTP Overall foil screen Conductors Braid	
U/FTP Individual foil pair screen Conductors Drain wire	
F/UTP Overall foil screen Conductors Drain wire	

For Technical Support: www.panduit.com/resources/install_maintain.asp



9 T568B Wiring

Diagram 9 illustrates the T568B wiring configuration. It includes a color key with pairs (R, B), (F, A), (B, A), and (F, B). A physical connector is shown with terminals R, F, B, and A. Four circular diagrams show correct and incorrect wire insertion methods. Two step-by-step diagrams show the process of inserting wires into the connector. The first diagram shows wires being inserted into the R and F ports. The second diagram shows the wires being inserted into the B and A ports. The second diagram is labeled '1.' and '2.'.

10 T568A Wiring

Diagram 10 illustrates the T568A wiring configuration. It includes a color key with pairs (R, B), (F, A), (B, A), and (F, B). A physical connector is shown with terminals R, F, B, and A. Four circular diagrams show correct and incorrect wire insertion methods. Two step-by-step diagrams show the process of inserting wires into the connector. The first diagram shows wires being inserted into the R and F ports. The second diagram shows the wires being inserted into the B and A ports. The second diagram is labeled '1.' and '2.'.

11

Diagram 11 shows a wire being trimmed with side cutters. A second diagram shows the wire with conductors cut flush. A red text box states: **IMPORTANT: Conductors must be cut flush**.

12

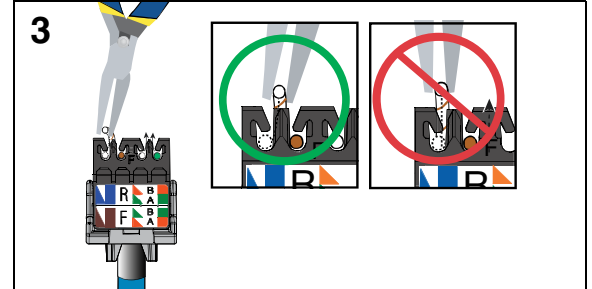
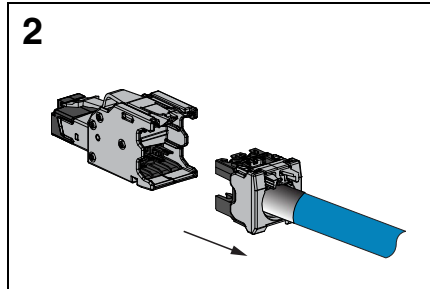
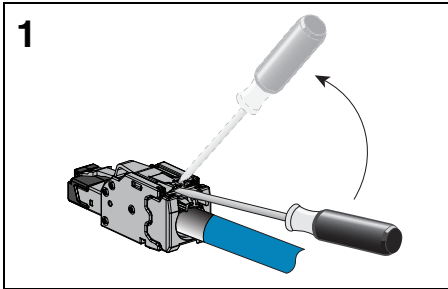
Diagram 12 shows a cable being inserted into a connector. A red circle with a slash indicates that the cable should not be inserted at an angle.

13

Diagram 13 shows a purple EGPT (Ergonomic Grounding and Pin Tool) being used to strip the cable jacket. The tool is labeled 'EGPT'.

14

Diagram 14 shows a hand using the EGPT tool to strip the cable jacket. An arrow indicates the direction of the cut.

REMOVAL STEPS**Notes:**

1. For specified performance, follow TIA/EIA 568-C installation guidelines.
2. Plug module can terminate 22-26 AWG solid or stranded IWC data cable with 0.063" (1.6mm) maximum insulated conductor outside diameter.
3. Plug module may be re-terminated a minimum of 20 times.
4. For technical and performance information, consult Panduit technical support.

As with all Wiring Accessories, the following statements apply:

1. Never install communications wiring during a lightning storm.
2. Never install communications wiring in wet locations unless the plug is specifically designed for use in wet locations.
3. Never touch uninsulated communications wiring or terminals unless the communication line has been disconnected at the network interface.
4. Use caution when installing or modifying communication wiring.

For Instructions in Local Languages
and Technical Support:

www.panduit.com/resources/install_maintain.asp

PANDUIT
www.panduit.com

E-mail:
techsupport@panduit.com

Phone:
866-405-6654