

2

1

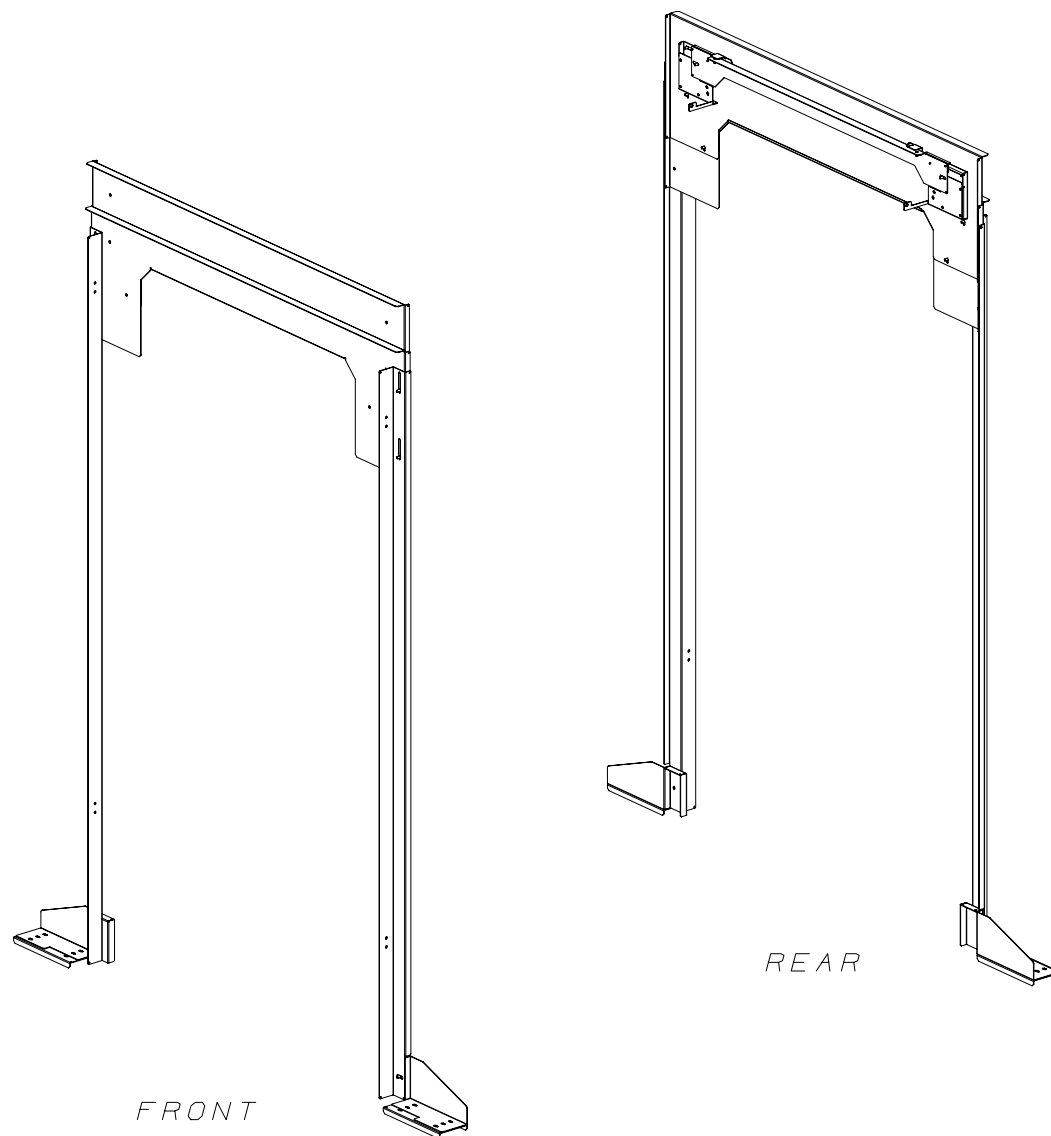
THIS COPY IS PROVIDED ON A RESTRICTED BASIS AND IS NOT TO BE USED IN ANY WAY DETRIMENTAL TO THE INTERESTS OF PANDUIT CORP.

NOTES:

- VISIT OUR ONLINE CATALOG AT WWW.PANDUIT.COM FOR A LIST OF CURRENT PARTS APPLICABLE FOR USE WITH THIS PRODUCT.
- PARTS SUPPLIED:
 - 1 - AISLE BEAM ASSY
 - 1 - CABINET BRACKET ASSY RH
 - 1 - CABINET BRACKET ASSY LH
 - 1 - TRANSOM 42/45
 - 1 - 3RU EXTENDER
 - 1 - DOOR MOUNTING RAIL RH
 - 1 - DOOR MOUNTING RAIL LH
 - 1 - FOOT FLOOR MOUNT RH
 - 1 - FOOT FLOOR MOUNT LH
 - 2 - UNDERFLOOR PLATE
 - 1 - HARDWARE KIT (NOT SHOWN)
 - 1 - INSTRUCTION SHEET
- PRIMARY DIMENSIONS ARE IN MILLIMETERS.

PART NO.	WEIGHT
C2SDT8W03DA**	19.1 kg 42.1 lb

** DENOTES COLOR - ADD SUFFIX:
"B1" FOR BLACK, "W1" FOR WHITE.



TITLE				900 HAC/CAC DOOR ADAPTER 42/45 (C2SDT8W03DA**)	
				CUSTOMER DRAWING	
ITEM REVISION NAME				15V530FA/00	
DATASET FILE NAME				15V530FA_DC/00A	
				MATERIAL:	
				N/A	
				DRAWING NUMBER:	
				15V530FA-DC	
DRAWN BY	DATE	CHK	SCALE	SHT 1 OF 3	
MEX-JAGC	6/7/16	PATR	NONE	A	

REV	DATE	BY	CHK	APR	DESCRIPTION	ECN
00A	6/7/16	MEX-JAGC	PATR	PATR	RELEASED TO PRODUCTION	V09000QZ/02

2

1

B

A



B

A



B

A



B

A



B

A



B

A



B

A



B

A



B

A



B

A



B

A



B

A



B

A



B

A



B

A



B

A



B

A



B

A



B

A



B

A



B

A



B

A



B

A



B

A



B

A



B

A



B

A



B

A



B

A



B

A



B

A



B

A



B

A



B

A



B

A



B

A



B

A



B

A



B

A



B

A



B

A



B

A



B

A



B

A



B

A



B

A



B

A



B

A



B

A



B

A



B

A



B

A



B

A



B

A



B

A



B

A



B

A



B

A



B

A



B

A



B

A



B

A



B

A



B

A



B

A



B

A



B

A



B

A



B

A



B

A



B

A



B

A



B

A



B

A



B

A



B

A



B

A



B

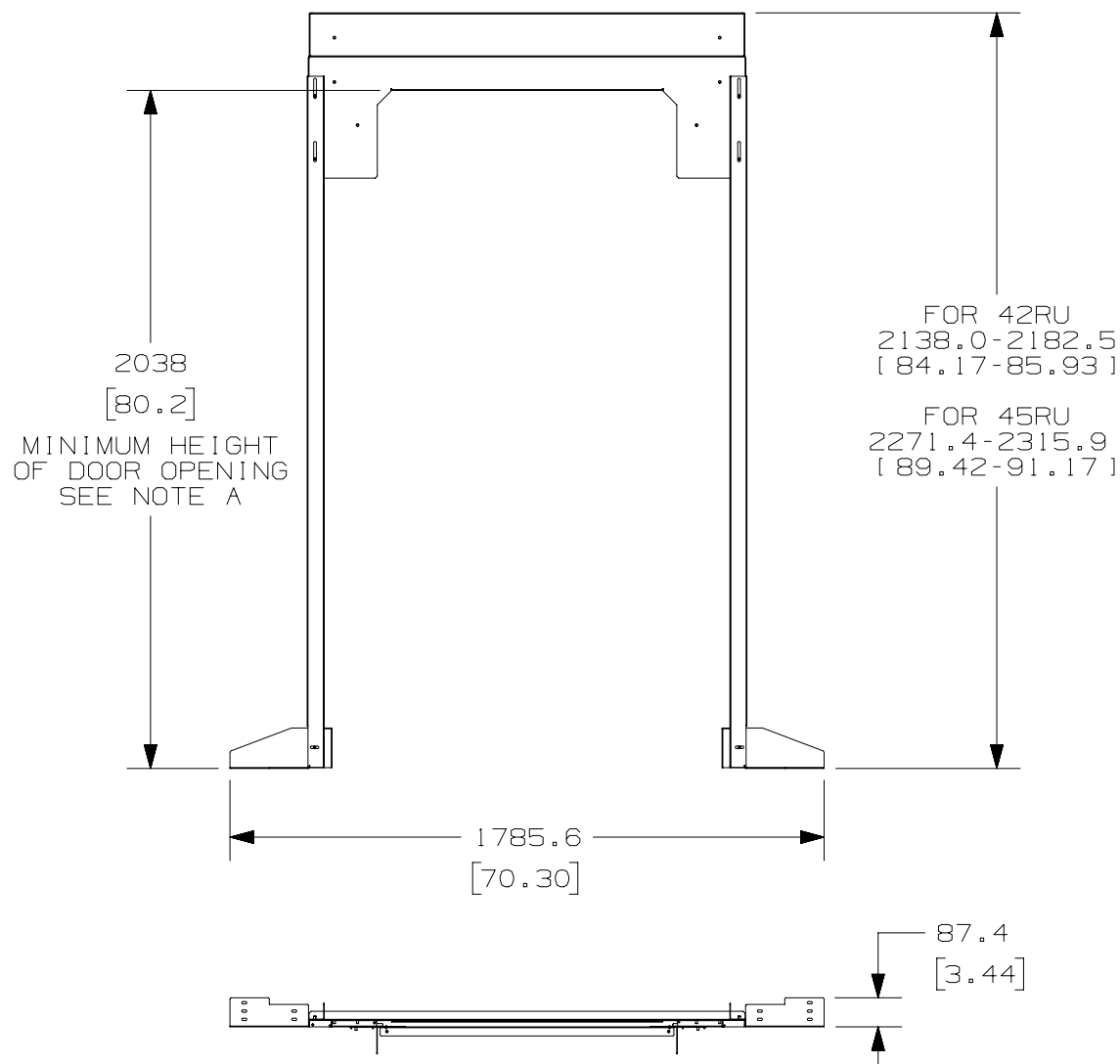
A



2


1

THIS COPY IS PROVIDED ON A RESTRICTED BASIS AND IS NOT TO BE USED IN ANY WAY DETRIMENTAL TO THE INTERESTS OF PANDUIT CORP.



NOTE A:

(ACTUAL HEIGHT WILL DEPEND ON THE POSITION OF THE CABINET LEVELING LEGS AND THE INSIDE HEIGHT OF THE SLIDING DOOR)

TITLE					900 HAC/CAC DOOR ADAPTER 42/45 (C2SDT8W03DA**)	
					CUSTOMER DRAWING	
ITEM REVISION NAME					15V530FA/00	
DATASET FILE NAME					15V530FA_DC/00A	
						
					MATERIAL:	
					N/A	
					DRAWING NUMBER:	
					15V530FA-DC	
DRAWN BY	DATE	CHK	SCALE	SIZE		
MEX-JAGC	6/7/16	PATR	NONE	SHT 2 OF 3	A	

REV	DATE	BY	CHK	APR	DESCRIPTION	ECN
00A	6/7/16	MEX-JAGC	PATR	PATR	SEE SHEET 1 OF 3 FOR REVISIONS	V09000QZ/02

2

1

B

A



B

A



B

A



B

A



B

A



B

A



B

A



B

A



B

A



B

A



B

A



B

A



B

A



B

A



B

A



B

A



B

A



B

A



B

A



B

A



B

A



B

A



B

A



B

A



B

A



B

A



B

A



B

A



B

A



B

A



B

A



B

A



B

A



B

A



B

A



B

A



B

A



B

A



B

A



B

A



B

A



B

A



B

A



B

A



B

A



B

A



B

A



B

A



B

A



B

A



B

A



B

A



B

A



B

A



B

A



B

A



B

A



B

A



B

A



B

A



B

A



B

A



B

A



B

A



B

A



B

A



B

A



B

A



B

A



B

A



B

A



B

A



B

A



B

A



B

A



B

A



B

A



B

A



B

A



B

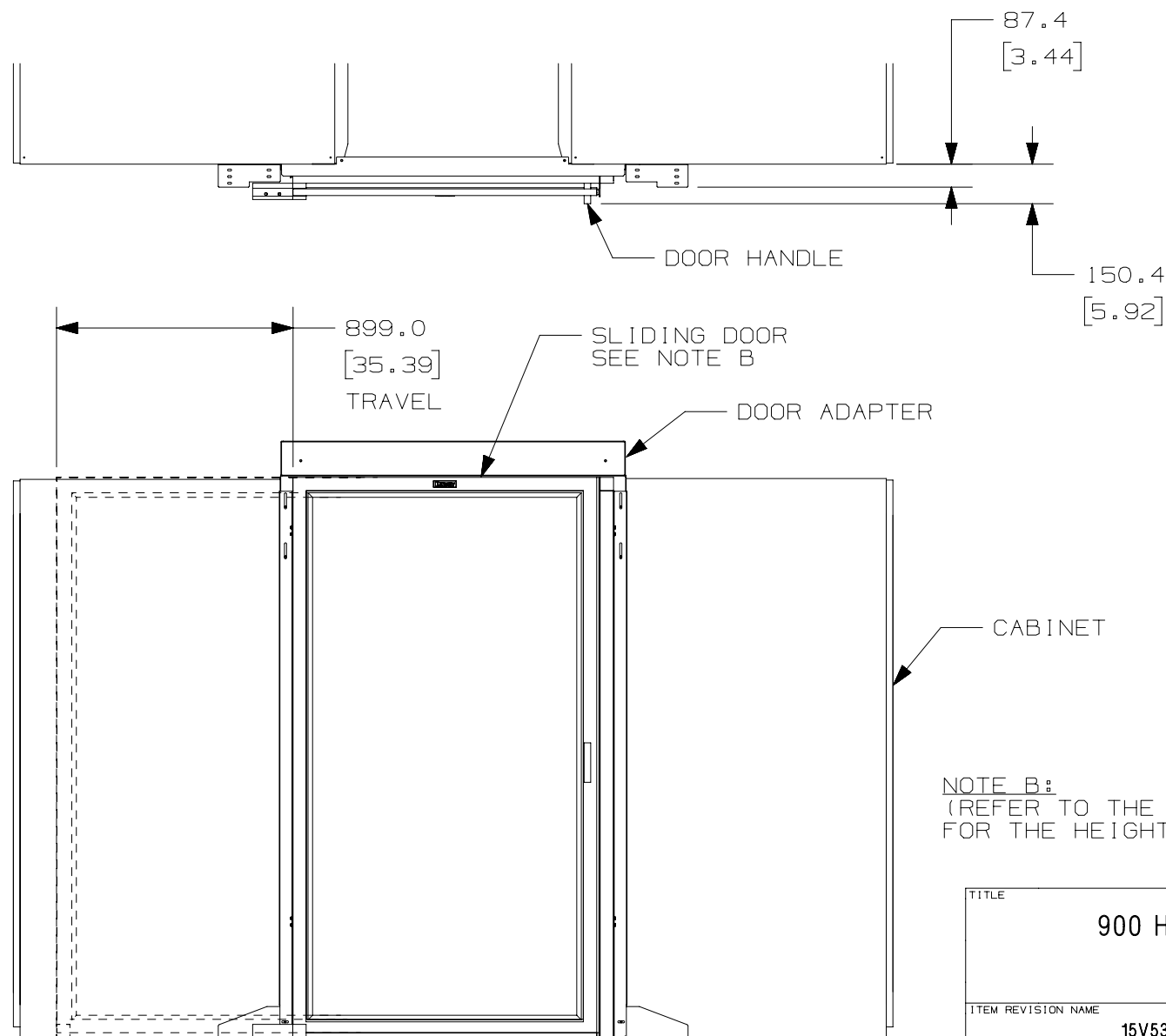
A



2

1

THIS COPY IS PROVIDED ON A RESTRICTED BASIS AND IS NOT TO BE USED IN ANY WAY DETRIMENTAL TO THE INTERESTS OF PANDUIT CORP.



NOTE B:
(REFER TO THE SLIDING DOOR CUSTOMER DRAWING
FOR THE HEIGHT AND WIDTH OF THE DOOR OPENING)

TITLE		900 HAC/CAC DOOR ADAPTER 42/45 (C2SDT8W03DA**)	
ITEM REVISION NAME		15V530FA/00	
DATASET FILE NAME		15V530FA_DC/00A	
MATERIAL:		N/A	
DRAWING NUMBER:		15V530FA-DC	
DRAWN BY	DATE	CHK	SCALE
MEX-JAGC	6/7/16	PATR	NONE
SHT 3 OF 3			SIZE A

00A	6/7/16	MEX-JAGC	PATR	PATR	SEE SHEET 1 OF 3 FOR REVISIONS	V09000QZ/02
REV	DATE	BY	CHK	APR	DESCRIPTION	ECN

2

1

B

A



B

A



B

A



B

A



B

A



B

A



B

A



B

A



B

A



B

A



B

A



B

A



B

A



B

A



B

A



B

A



B

A



B

A



B

A



B

A



B

A



B

A



B

A



B

A



B

A



B

A



B

A



B

A



B

A



B

A



B

A



B

A



B

A



B

A



B

A



B

A



B

A



B

A



B

A



B

A



B

A



B

A



B

A



B

A



B

A



B

A



B

A



B

A



B

A



B

A



B

A



B

A



B

A



B

A



B

A



B

A



B

A



B

A



B

A



B

A



B

A



B

A



B

A



B

A



B

A



B

A



B

A



B

A



B

A



B

A



B

A



B

A



B

A



B

A



B

A



B

A



B

A



B

A



B

A



B

A



B

A



B

A



B

A



B