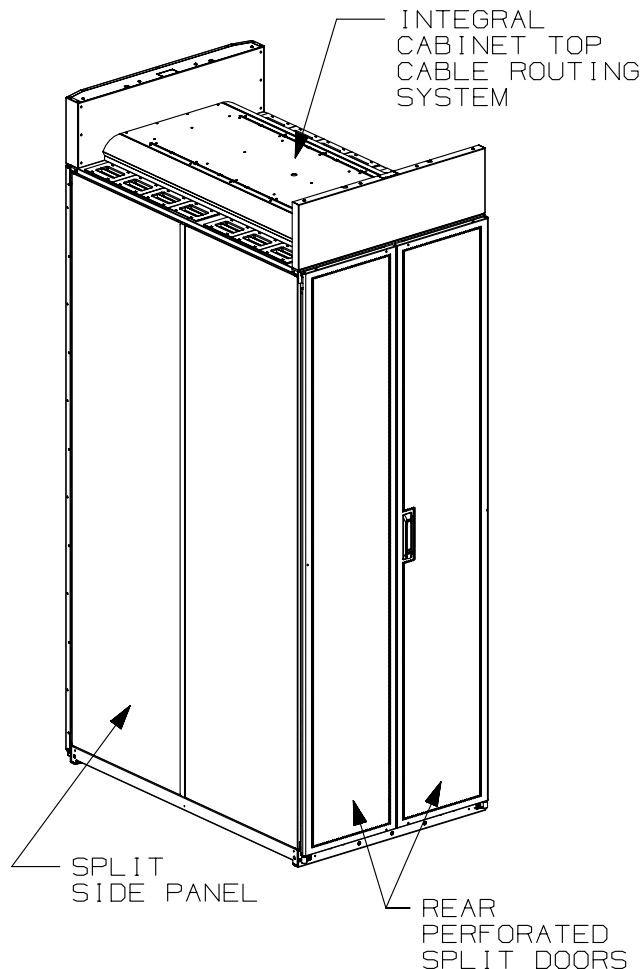
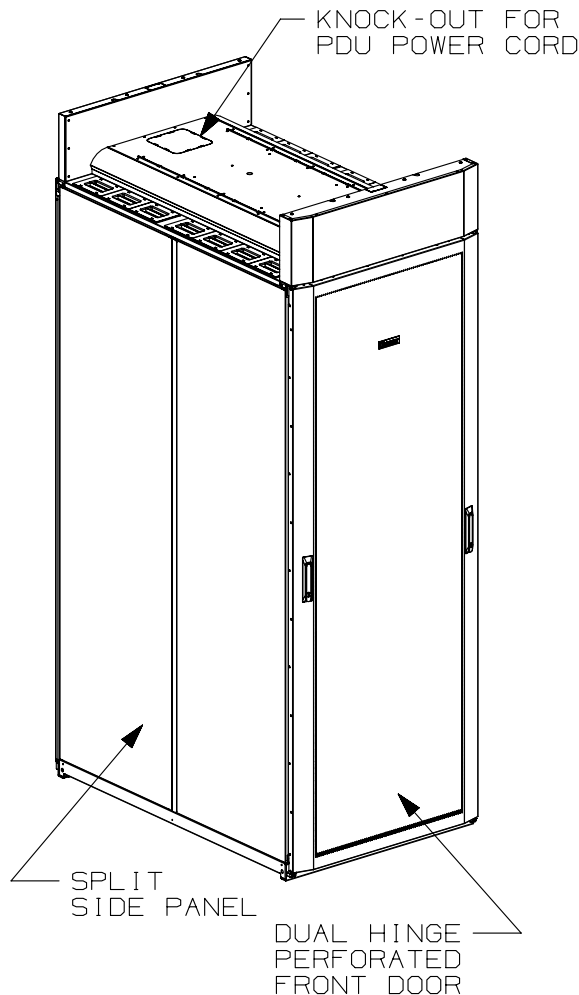


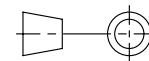
THIS COPY IS PROVIDED ON A RESTRICTED BASIS AND IS NOT TO BE USED IN ANY WAY DETRIMENTAL TO THE INTERESTS OF PANDUIT CORP.



1. VISIT OUR ON-LINE CATALOG AT WWW.PANDUIT.COM FOR A LIST OF CURRENT PARTS APPLICABLE FOR USE WITH THIS PRODUCT.
2. PRIMARY DIMENSIONS ARE IN MILLIMETERS.
3. INDEPENDENT ADJUSTABLE REAR EQUIPMENT MOUNTING RAILS (EIA) ADJUST FROM 130mm [5.1in] TO 422mm [16.6in], AND FROM 469mm [18.46in] TO 751mm [29.56in]. WITH NO FINGERS OR PDU'S, 913mm [35.94in] TO 964mm [37.95in].
4. CAN BE USED WITH ANY 19" EIA STANDARD COMPONENT IN ADDITION TO ALL PANDUIT HORIZONTAL CABLE MANAGEMENT AND PATCH PANEL PRODUCTS.
5. EIA UNIVERSAL STANDARD HOLE PROGRESSION ON EQUIPMENT RAILS 15.88mm [.625in], 15.88mm [.625in], 12.70mm [.5in], 15.88mm [.625in], 15.88mm [.625in], 12.7mm [.5in]...ETC.
6. PARTS SUPPLIED:
-BASE CABINET
OPTIONAL COMPONENTS:
-FRONT PERFORATED DUAL HINGE DOOR (SEE CHART ON SHEET 2)
-REAR PERFORATED SPLIT DOOR (SEE CHART ON SHEET 2)
-#12-24 TAPPED EQUIPMENT RAILS FRONT & REAR
-SPLIT SIDE PANELS (SEE CHART ON SHEET 2)
-VERTICAL CABLE MANAGEMENT FINGERS (SEE CHART ON SHEET 2)
-CABINET HARDWARE KIT
-INSTRUCTION SHEET
7. RACK UNIT SPACING NUMERALS ARE CLEARLY PRINTED ON EQUIPMENT MOUNTING RAILS.
8. FULLY BONDED STRUCTURE WHEN ASSEMBLED PER INSTRUCTIONS.
9. STATIC LOAD RATING: 1360 Kg (3000 LBS)
10. ROLLING LOAD RATING: 1133 Kg (2500 LBS)
11. SINGLE POINT GROUND LOCATIONS AT TOP AND BOTTOM OF CABINET.
12. ALL CABINET RAILS ARE INSTALLED NUMBERS UP.
13. MAXIMUM EQUIPMENT DEPTH, 992mm [39.06].

01A	12-09-14	PBS	ADP	TCN	FLOOR MOUNT DIMENTIONS UPDATED	V09000BX
00A	4-08-13	PBS	NAGL	JDWE	RELEASED TO PRODUCTION	12V352AW-DC
REV	DATE	BY	CHK	APR	DESCRIPTION	ECN

TITLE		NET-ACCESS N-TYPE CABINET WITH INTEGRAL CABINET TOP CABLE ROUTING SYSTEM 800mm WIDE X 1200mm DEEP FAMILY CUSTOMER DRAWING		
ITEM REVISION NAME		12V352AW/01.PRT		
DATASET FILE NAME		12V352AW_DC/01A.PRT		
		MATERIAL:		
		N/A		
		DRAWING NUMBER:		
		12V352AW-DC		
DRAWN BY	DATE	CHK	SCALE	SIZE
PBS	4-08-13	NAGL	NONE	A



THIRD ANGLE PROJECTION

THIS COPY IS PROVIDED ON A RESTRICTED BASIS AND IS NOT TO BE USED IN ANY WAY DETRIMENTAL TO THE INTERESTS OF PANDUIT CORP.

PART NO.	DESCRIPTION	DUAL HINGE DOOR	SPLIT DOOR	SINGLE HINGE DOOR	SPLIT SIDE PANEL	CAGE NUT E-RAIL (2-SETS)	TAPPED E-RAIL (2-SETS)	CABLE MANAGEMENT	CABINET WEIGHT FULLY UNPACKAGED	CABINET WEIGHT SHIPPING WEIGHT
N8222*T	NET-ACCESS N-TYPE CABINET 42RUX1200mm DEEP	01	01	00	02	00	01	02	152 Kg/EACH 336 LBS/EACH	173 Kg/EACH 381 LBS/EACH
N8522*T	NET-ACCESS N-TYPE CABINET 45RUX1200mm DEEP	01	01	00	02	00	01	02	159 Kg/EACH 350 LBS/EACH	179 Kg/EACH 395 LBS/EACH
N8822*T	NET-ACCESS N-TYPE CABINET 48RUX1200mm DEEP	01	01	00	02	00	01	02	167 Kg/EACH 368 LBS/EACH	187 Kg/EACH 413 LBS/EACH
N8229*T	NET-ACCESS N-TYPE CABINET 42RUX1200mm DEEP	01	01	00	00	00	01	02	113 Kg/EACH 250 LBS/EACH	134 Kg/EACH 295 LBS/EACH
N8529*T	NET-ACCESS N-TYPE CABINET 45RUX1200mm DEEP	01	01	00	00	00	01	02	120 Kg/EACH 265 LBS/EACH	141 Kg/EACH 310 LBS/EACH
N8829*T	NET-ACCESS N-TYPE CABINET 48RUX1200mm DEEP	01	01	00	00	00	01	02	127 Kg/EACH 280 LBS/EACH	147 Kg/EACH 325 LBS/EACH

* DENOTES COLOR

"B" = BLACK

"W" = WHITE

TITLE
NET-ACCESS N-TYPE CABINET WITH
INTEGRAL CABINET TOP CABLE ROUTING
SYSTEM 800mm WIDE X 1200mm DEEP FAMILY
CUSTOMER DRAWING

ITEM REVISION NAME
12V352AW/01.PRT

DATASET FILE NAME
12V352AW_DC/01A.PRT

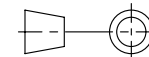
PANDUIT

MATERIAL:

N/A

DRAWING NUMBER:

12V352AW-DC

THIRD ANGLE
PROJECTION

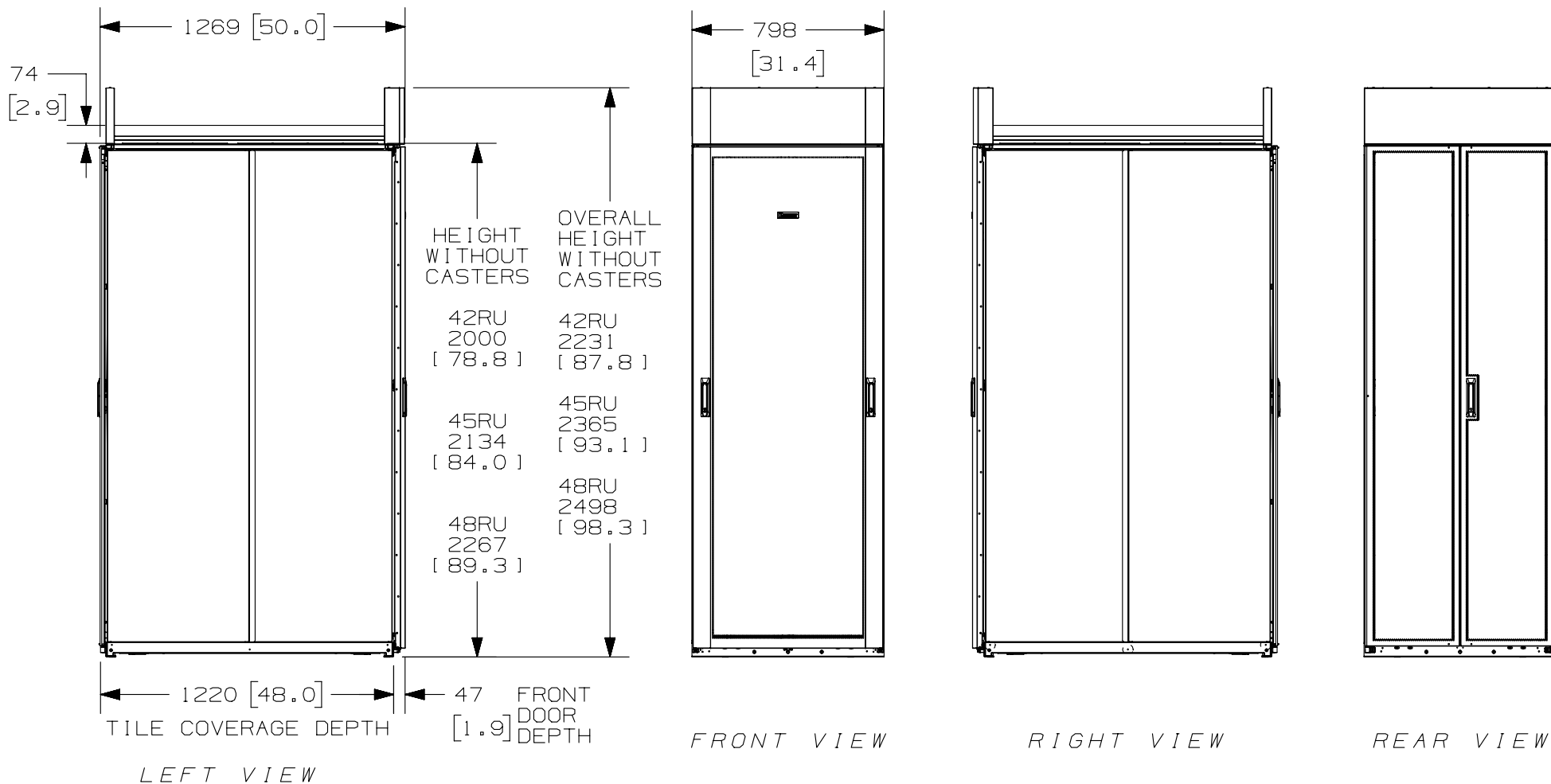
01A	12-09-14	PBS	ADP	TCN	SEE SHEET 1 OF 5 FOR REVISIONS	V09000BX
00A	4-08-13	PBS	NAGL	JDWE	SEE SHEET 1 OF 5 FOR REVISIONS	12V352AW-DC
REV	DATE	BY	CHK	APR	DESCRIPTION	ECN

DRAWN BY	DATE	CHK	SCALE	SHT 2 OF 5	SIZE
PBS	4-08-13	NAGL	NONE		A

2

1

THIS COPY IS PROVIDED ON A RESTRICTED BASIS AND IS NOT TO BE USED IN ANY WAY DETRIMENTAL TO THE INTERESTS OF PANDUIT CORP.



2

1

TITLE
NET-ACCESS N-TYPE CABINET WITH
INTEGRAL CABINET TOP CABLE ROUTING
SYSTEM 800mm WIDE X 1200mm DEEP FAMILY
CUSTOMER DRAWING

ITEM REVISION NAME
12V352AW/01.PRT

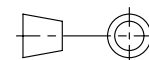
DATASET FILE NAME
12V352AW_DC/01A.PRT

PANDUIT

MATERIAL:

N/A

DRAWING NUMBER:
12V352AW-DC

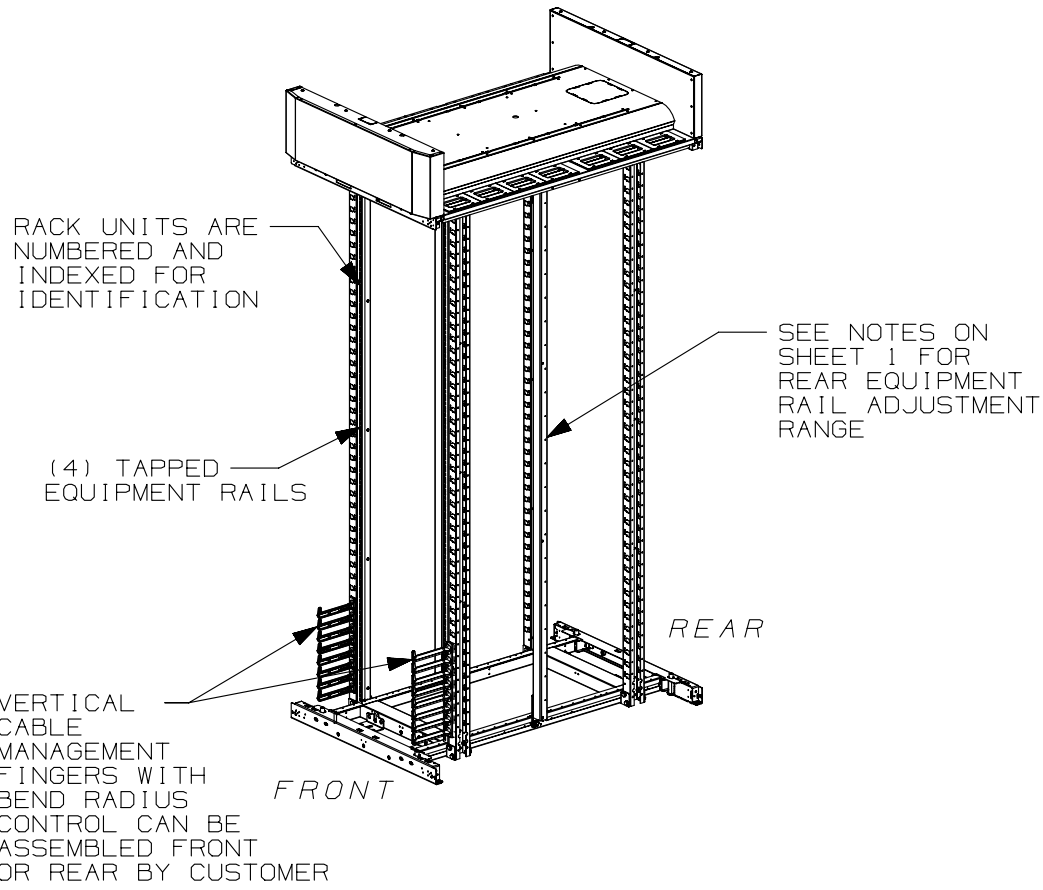


THIRD ANGLE
PROJECTION

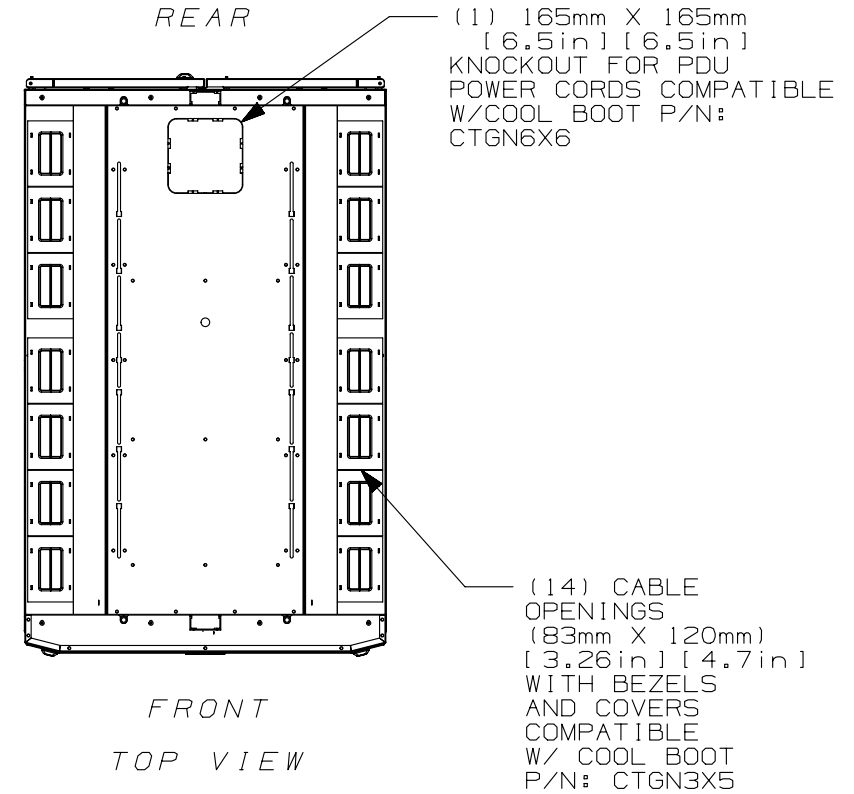
DRAWN BY PBS	DATE 4-08-13	CHK NAGL	SCALE NONE	SHT 3 OF 5	SIZE A
-----------------	-----------------	-------------	---------------	------------	-----------

REV	DATE	BY	CHK	APR	DESCRIPTION	ECN
01A	12-09-14	PBS	ADP	TCN	SEE SHEET 1 OF 5 FOR REVISIONS	V09000BX
00A	4-08-13	PBS	NAGL	JDWE	SEE SHEET 1 OF 5 FOR REVISIONS	12V352AW-DC

THIS COPY IS PROVIDED ON A RESTRICTED BASIS AND IS NOT TO BE USED IN ANY WAY DETRIMENTAL TO THE INTERESTS OF PANDUIT CORP.



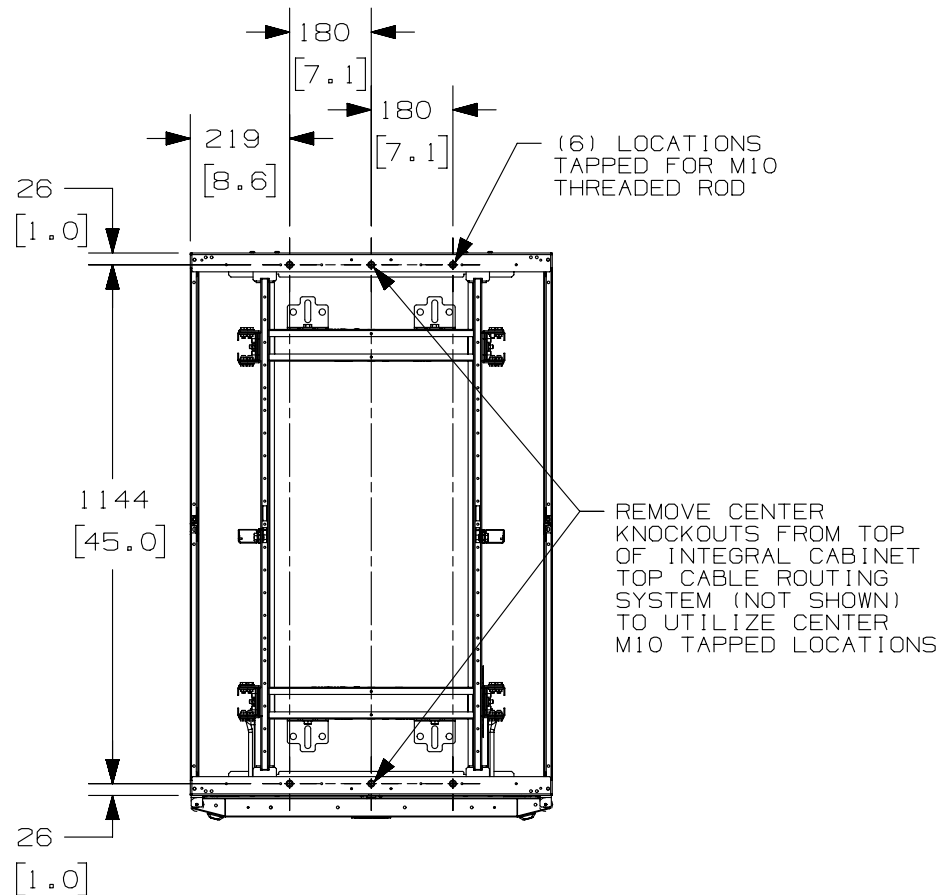
FRONT DOOR, REAR DOOR,
AND SIDE PANELS NOT SHOWN



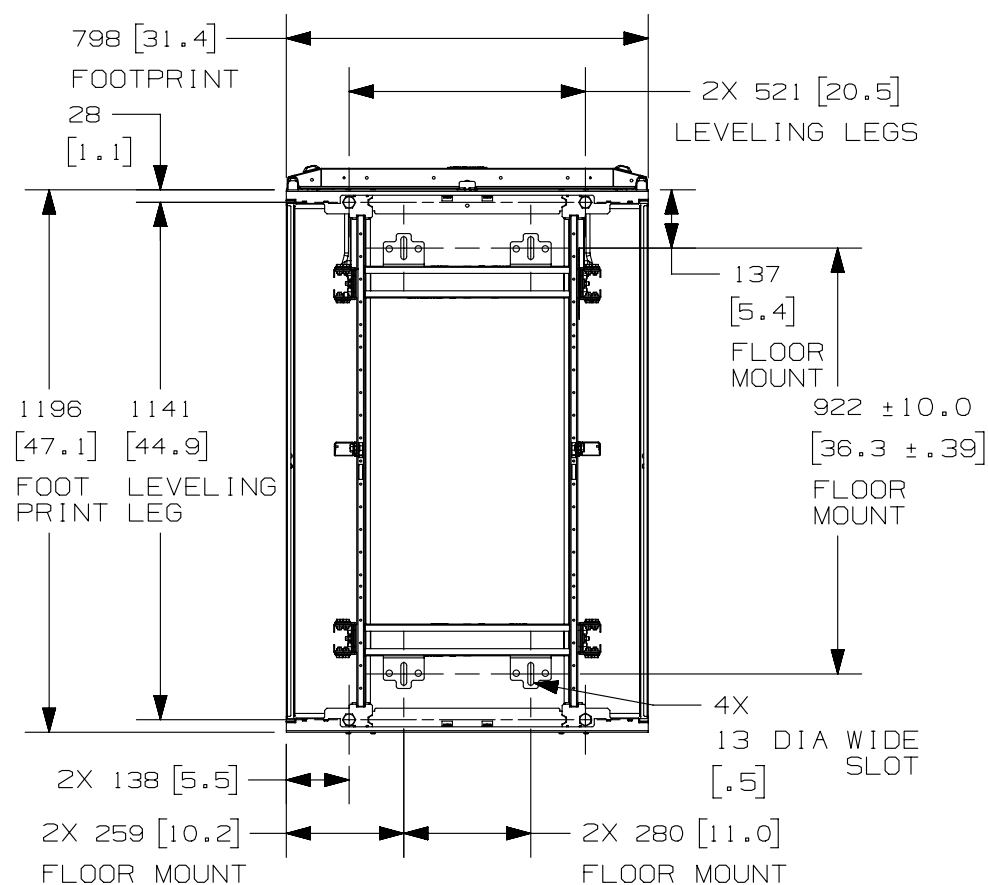
01A	12-09-14	PBS	ADP	TCN	SEE SHEET 1 OF 5 FOR REVISIONS	V09000BX
00A	4-08-13	PBS	NAGL	JDWE	SEE SHEET 1 OF 5 FOR REVISIONS	12V352AW-DC
REV	DATE	BY	CHK	APR	DESCRIPTION	ECN

TITLE		NET-ACCESS N-TYPE CABINET WITH INTEGRAL CABINET TOP CABLE ROUTING SYSTEM 800mm WIDE X 1200mm DEEP FAMILY CUSTOMER DRAWING	
ITEM REVISION NAME		12V352AW/01.PRT	
DATASET FILE NAME		12V352AW_DC/01A.PRT	
		MATERIAL:	
		N/A	
		DRAWING NUMBER:	
		12V352AW-DC	
DRAWN BY	DATE	CHK	SCALE
PBS	4-08-13	NAGL	NONE
		THIRD ANGLE PROJECTION	
		SHT 4 OF 5	
		SIZE	
		A	

THIS COPY IS PROVIDED ON A RESTRICTED BASIS AND IS NOT TO BE USED IN ANY WAY DETRIMENTAL TO THE INTERESTS OF PANDUIT CORP.



TOP VIEW
INTEGRAL CABINET TOP CABLE
ROUTING SYSTEM REMOVED FOR CLARITY



REAR OF CABINET - BOTTOM VIEW
FLOOR MOUNTING HOLE LOCATIONS -
SOME PARTS REMOVED FOR CLARITY

01A	12-09-14	PBS	ADP	TCN	SEE SHEET 1 OF 5 FOR REVISIONS	V09000BX
00A	4-08-13	PBS	NAGL	JDWE	SEE SHEET 1 OF 5 FOR REVISIONS	12V352AW-DC
REV	DATE	BY	CHK	APR	DESCRIPTION	ECN

TITLE		NET-ACCESS N-TYPE CABINET WITH INTEGRAL CABINET TOP CABLE ROUTING SYSTEM 800mm WIDE X 1200mm DEEP FAMILY CUSTOMER DRAWING	
ITEM REVISION NAME		12V352AW/01.PRT	
DATASET FILE NAME		12V352AW_DC/01A.PRT	
		MATERIAL:	
		N/A	
		DRAWING NUMBER:	
		12V352AW-DC	
DRAWN BY	DATE	CHK	SCALE
PBS	4-08-13	NAGL	NONE
THIRD ANGLE PROJECTION		SHT 5 OF 5	
		A	