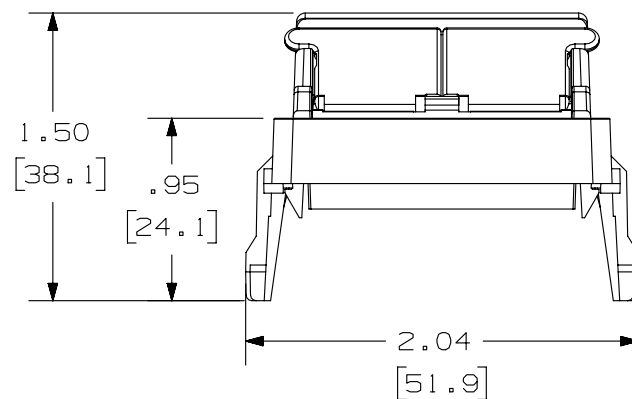
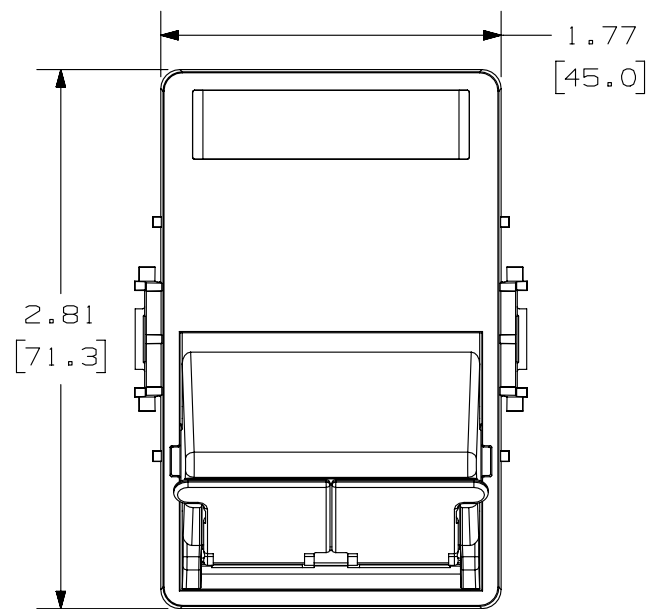


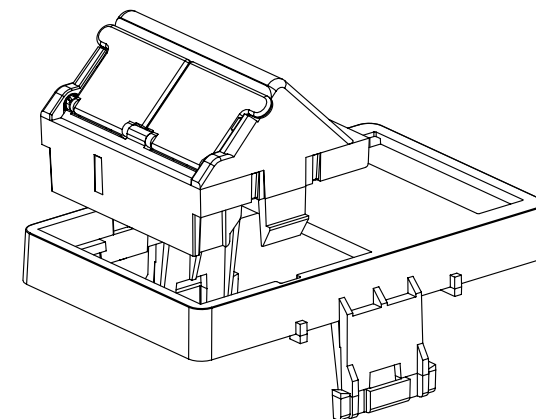
THIS COPY IS PROVIDED ON A RESTRICTED BASIS AND IS NOT TO BE USED IN ANY WAY DETRIMENTAL TO THE INTERESTS OF PANDUIT CORP.




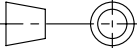
PANDUIT P/N	WEIGHT
NKCLKLS2S**	.37 LB/10 PCS (168.2 g/10 PCS)

NOTES :

1. SEE CURRENT CATALOG FOR ADDITIONAL PART NUMBER SUFFIXES TO INDICATE COLOR AND OR PACKAGE QUANTITY.
2. SEE CATALOG FOR COMPLETE LIST OF PARTS APPLICABLE FOR USE WITH THIS PART.
3. DIMENSIONS IN [] ARE IN METRIC.
4. PART INCLUDES:
 - 1- CLIC*LINE FACEPLATE ADAPTER
 - 1- 2 POSITION NETKEY SLOPED SHUTTERED 1/2 INSERT
 - 1- LABEL
 - 1- LABEL COVER



CLIC'LINE IS A TRADEMARK OF LAURITZ
KNUDSEN A/S, BALLERUP, DENMARK

PART NUMBER		NK LKCL S2S * *	
TITLE			
NETKEY 2 POSITION DENMARK CLIC'LINE SLOPED SHUTTERED FACEPLATE ADAPTER KIT			
CUSTOMER DRAWING			
ITEM REVISION NAME		M02463AG/00	
DATASET FILE NAME		M02463AG_DC08_00B	
UNLESS OTHERWISE SPECIFIED, DIMENSIONAL TOLERANCES ARE: IN [mm]			
$.X \pm .003 [.8]$ 		$.XXX \pm .010 [.3]$ ANGLES \pm	
THIRD ANGLE PROJECTION		MATERIAL: ABS	
DRAWING NUMBER:		02463-08	
DRAWN BY	DATE	CHK	SIZE
JSP	6-17-06	EB	A
SHT 1 OF 1			

1	5/20/14	JSP	REFR	JCK	A. REVISED DRAWING TITLE BLOCK.	02463-08
R	6-17-06	JSP	EB	EB	RELEASED TO PRODUCTION	02463-08
REV	DATE	BY	CHK	APR	DESCRIPTION	ECN