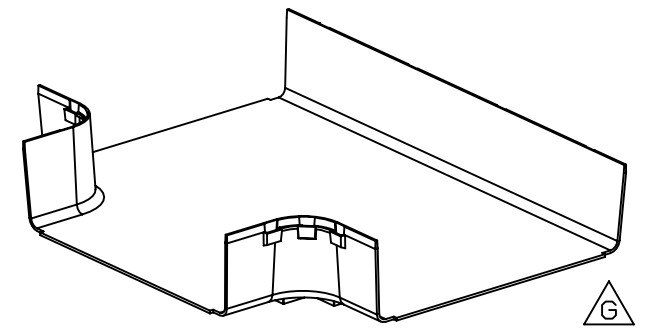
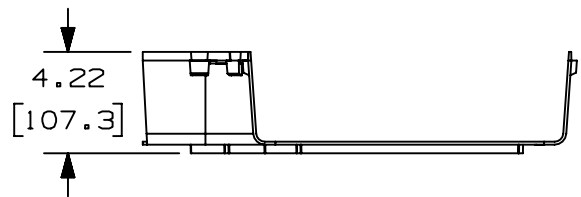
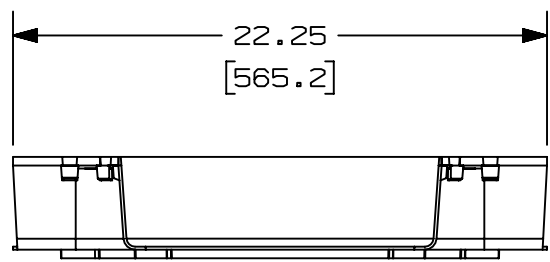
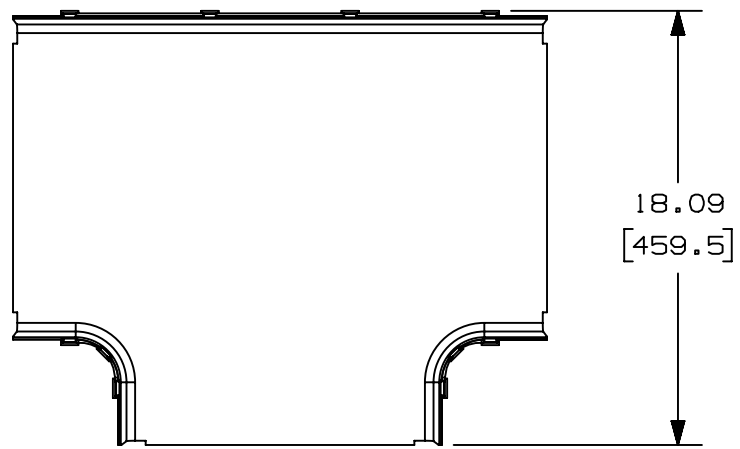


2

1

THIS COPY IS PROVIDED ON A RESTRICTED BASIS AND IS NOT TO BE USED IN ANY WAY DETRIMENTAL TO THE INTERESTS OF PANDUIT CORP.



PANDUIT PART NUMBER	WEIGHT	MATERIAL
FRT12X4**	3.1 LB/EACH (1406g/EACH)	ABS
FRT12X4L**	3.1 LB/EACH (1406g/EACH)	PC/ABS



NOTES:

1. SEE CURRENT CATALOG FOR ADDITIONAL PART SUFFIXES TO INDICATE COLOR AND/OR PACKAGE QUANTITY.
2. DIMENSIONS IN PARENTHESIS ARE IN METRIC.

B

B

A

A

REV	DATE	BY	CHK	APR	DESCRIPTION	ECN
04A	1-16-20	MES	DWR	DWR	H. ADDED FRT12X4L** PART NUMBER	V09002DZ/01
3	05-16-13	JBN	RTFI	RN	G. UPDATED DRAWING BORDER & TITLE BLOCK	37617-58

<p>TITLE  <b>FIBERRUNNER 12X4 HORIZONTAL TEE FITTING</b>  <b>FRT12X4**, FRT12X4L**</b>                  CUSTOMER DRAWING</p>					
<p>ITEM REVISION NAME  <b>D37617BG/04</b></p>					
<p>DATASET FILE NAME  <b>D37617BG_DC/04A</b></p>					
<p>UNLESS OTHERWISE SPECIFIED,                  DIMENSIONAL TOLERANCES ARE: IN [ mm ]</p>					
<p>.X ±                  .XX ± .03 [ .8 ]</p>		<p>.XXX ±                  ANGLES ±</p>		<p>MATERIAL:  <b>SEE PART NUMBER TABLE ABOVE</b></p>	
				<p>DRAWING NUMBER:  <b>37617-58</b></p>	
<p>DRAWN BY  <b>JHNU</b></p>	<p>DATE  <b>12-27-00</b></p>	<p>CHK  <b>SMF</b></p>	<p>SCALE  <b>NONE</b></p>	<p>SHT 1 OF 1</p>	<p>SIZE  <b>A</b></p>

2

1

D10100DA/15