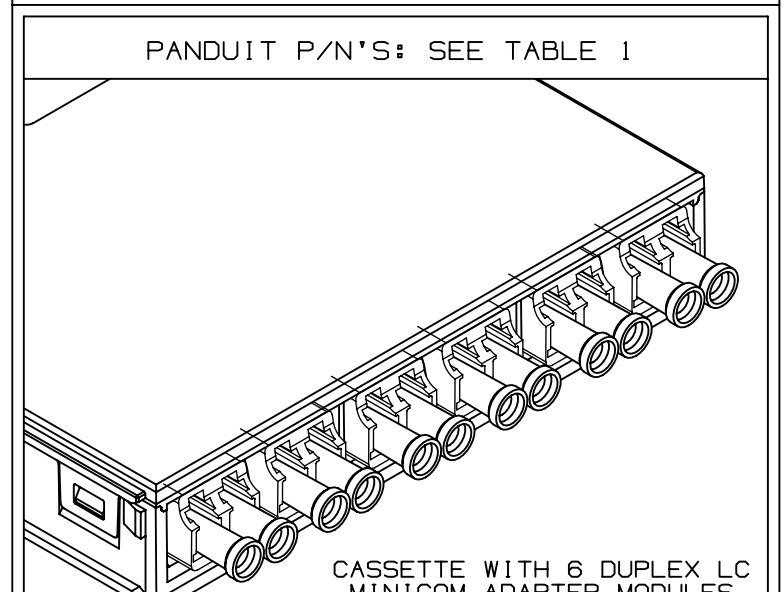


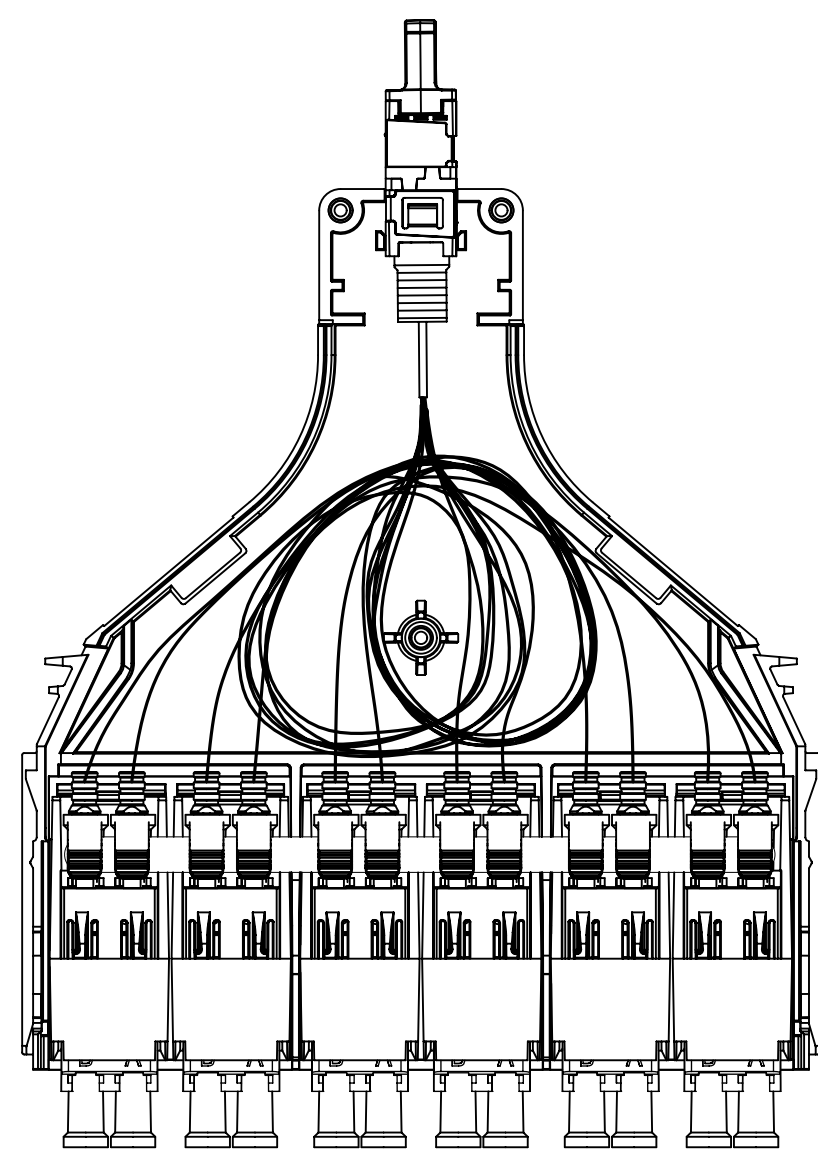
- NOTES:
- IDENTIFICATION:
    - QUICKNET SFO CASSETTE, 12 FIBER DUPLEX LC TO MPO; METHOD B, END 1.
    - CASSETTE PART NUMBERS: SEE TABLE 1.
  - EACH CASSETTE WILL BE SHIPPED WITH TEST DATA.
  - DO NOT REMOVE DUST CAPS AT ANY TIME EXCEPT FOR TESTING, REPLACE IMMEDIATELY AFTERWARDS.
  - SCREWS: ITEM 6, TO BE FASTENED THROUGH COVER AND INTO BASE USING 7-9 in-lb OF TORQUE.
  - LABELS:
    - EACH CASSETTE TO BE LABELED AS SHOWN (ITEM 11) WITH A SERIALIZED NUMBER THAT IS TRACEABLE TO QUALITY CONTROL RECORDS; SEE DRAWING 02088-77 FOR PRINTING FORMAT.
    - EACH CASSETTE TO HAVE A CHANNELING AND TEST LABEL (ITEM 12) INCLUDED WITH THE PACKAGING; SEE DRAWING 02863-08 FOR PRINTING FORMAT.
  - THE QUICKNET CASSETTE LABEL, ITEM 8, IS TO BE INSTALLED ON THE BOTTOM OF THE CASSETTE ASSEMBLY.
  - REFERENCE 1.1, NS-1975 FOR THOSE PRODUCT CHARACTERISTICS WHICH SHALL BE VERIFIED BY PANDUIT QUALITY CONTROL.
  - REFERENCE PRODUCT SPECIFICATION PS-NS-980 (PANDUIT REFERENCE ONLY).
  - FOR PACKAGING REQUIREMENTS, REFER TO PPS-274.
  - ALL PURCHASED ITEMS MUST CONFORM TO C2-0B34 PANDUIT SPECIFICATION FOR CHEMICAL SUBSTANCES TO BE CONTROLLED IN PRODUCT AND PACKAGING.
  - REFERENCE DRAWING 02068-57 FOR INSERTION AND RETURN LOSS REQUIREMENTS.

ITEM	QUICKNET CASSETTE P/N	QUICKNET CASSETTE DESCRIPTION	LC ADAPTER PART No.	ADAPTER DESCRIPTION	QTY.	MPO ADAPTER PART No.	QTY.
	F06N-12-10B1	QUICKNET SFO CASSETTE 12 FIBER;OM1 FIBER; STANDARD LOSS; DUPLEX LC TO MPO; METHOD B, END 1	△SFADLCE1	LC ELECTRIC IVORY ADAPTER WITH PHOS BRONZE SPLIT SLEEVE			
	F05N-12-10B1	QUICKNET SFO CASSETTE 12 FIBER;OM2 FIBER; STANDARD LOSS; DUPLEX LC TO MPO; METHOD B, END 1	△SFADLCBL	LC BLACK ADAPTER WITH PHOS BRONZE SPLIT SLEEVE			
	FOXN-12-10B1	QUICKNET SFO CASSETTE 12 FIBER;OM3 FIBER; STANDARD LOSS; DUPLEX LC TO MPO; METHOD B, END 1					
	FOXO-12-10B1	QUICKNET SFO CASSETTE 12 FIBER;OM3 FIBER; OPTIMIZED LOSS; DUPLEX LC TO MPO; METHOD B, END 1					
1	FQZN-12-10B1	QUICKNET SFO CASSETTE 12 FIBER;OM4 FIBER; STANDARD LOSS; DUPLEX LC TO MPO; METHOD B, END 1	SFADLCZAO	LC AQUA ADAPTER WITH ZIRCONIA SPLIT SLEEVE	6	RMPOSK2-1 (GRAY)	1
	FOZO-12-10B1	QUICKNET SFO CASSETTE 12 FIBER;OM4 FIBER; OPTIMIZED LOSS; DUPLEX LC TO MPO; METHOD B, END 1	△SFADLCZAO				
	FOSA-12-10B1	QUICKNET SFO CASSETTE 12 FIBER;OM4+ SIGNATURE CORE; ULTRA LOW LOSS; DUPLEX LC TO MPO; METHOD B, END 1					
	REMOVED						
	FQWA-12-10B1	QUICKNET SFO CASSETTE 12 FIBER; OM5 FIBER; ULTRA LOSS; DUPLEX LC TO MPO; METHOD B, END 1	△SFADLCZLM	LC LIME ADAPTER WITH ZIRCONIA SPLIT SLEEVE		RMPOSK2-1LM (GRAY/LIME)	
	FQWO-12-10B1	QUICKNET SFO CASSETTE 12 FIBER; OM5 FIBER; OPTIMIZED LOSS; DUPLEX LC TO MPO; METHOD B, END 1	△SFADLCZLM	LC LIME ADAPTER WITH ZIRCONIA SPLIT SLEEVE		RMPOSK2-1LM (GRAY/LIME)	

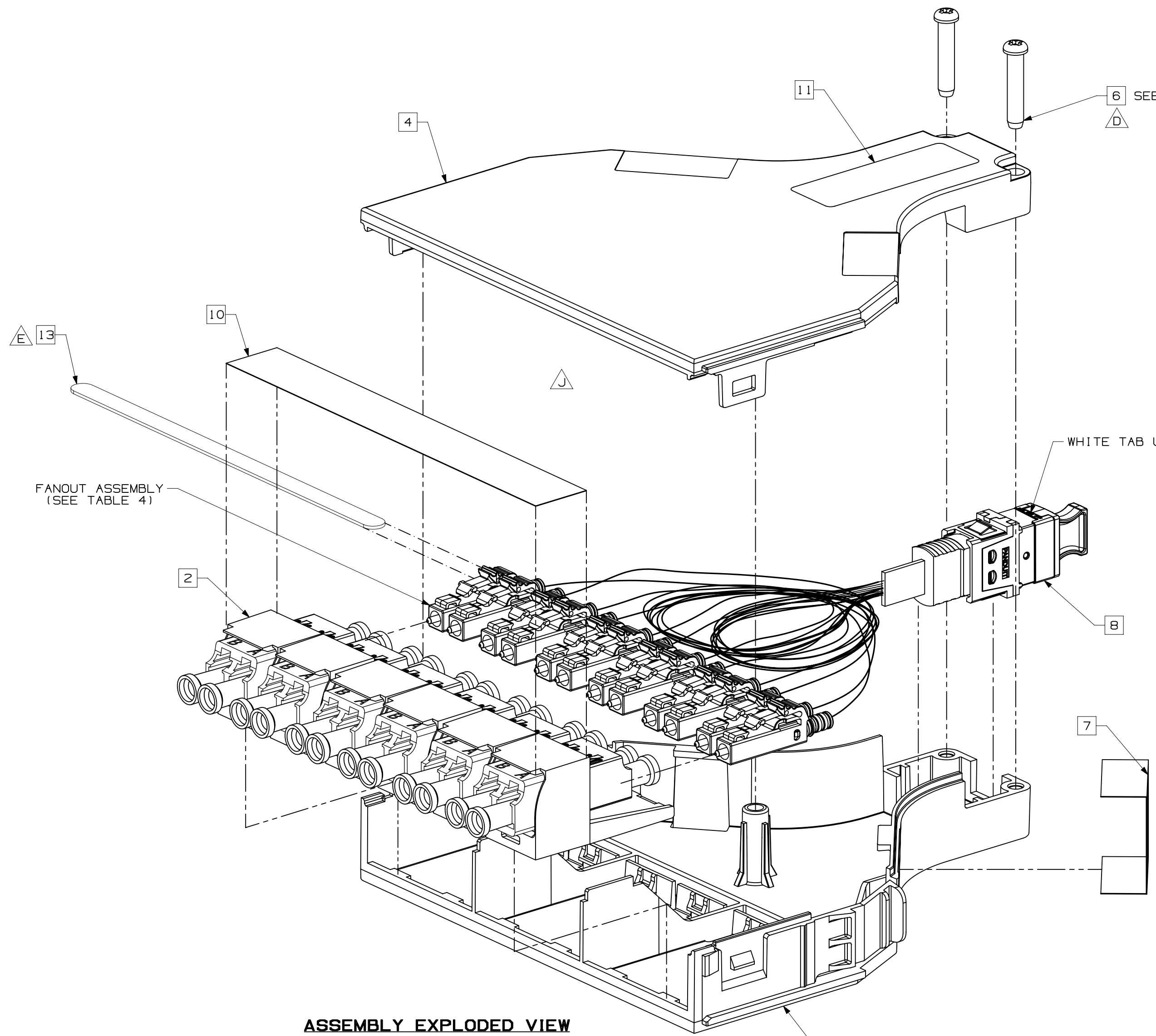
ITEM	PART NUMBER	DESCRIPTION	DRAWING NO.	QTY.
2	△MMSDLCBL	MINI-COM PAN-LC MODULE BASE	10F116DG-DS	6
3	MFOCBMCMPOSCBL	QUICKNET CASSETTE BASE FOR MINI-COM MODULES AND MPOSC ADAPTER	02947-53	1
4	MFOCCMPOSCBL	QUICKNET CASSETTE COVER FOR MINI-COM MODULES AND MPOSC ADAPTER	02947-54	1
	REMOVED			
6	02947DF	#5-20 PHILLIPS PAN HEAD HIGH-LOW SELF-TAPPING SCREW	02947DF-DS	2
7	00911-13	TAMPER PROOF WARNING LABEL	00911-13	2
8	SEE TABLE 1	MPOSC ADAPTER ASSEMBLY WITH SINGLE DUST PLUG	F00075AF-DA	1
9	POCL	PANDUIT QUICKNET CASSETTE LABEL	02947-22	1
10	R3M444TAPE.5	3M 444 DOUBLE-SIDED FILM TAPE, 1/2" WIDE X 3-3/4" LONG.	02947-28	1
11	34110-30	LABEL, BLANK - DUCT 1/2" X 1 1/2"	02068-77	1
12	34110-29	CHANNELING AND TEST LABEL	34110-29	1
13	M02947CZ	LC CONNECTOR LOCK SHIM	M02947CZ-DV	1

PANDUIT P/N'S: SEE TABLE 1											
											
CASSSETTE WITH 6 DUPLEX LC MINICOM ADAPTER MODULES ISOMETRIC VIEW											
FIBER POSITION AND COLOR CHART											
11	12	9	10	7	8	5	6	3	4	1	2
CONNECTORIZATION											
POSITION 1 - BLUE	POSITION 2 - ORANGE										
POSITION 3 - GREEN	POSITION 4 - BROWN										
POSITION 5 - SLATE	POSITION 6 - WHITE										
POSITION 7 - RED	POSITION 8 - BLACK										
POSITION 9 - YELLOW	POSITION 10 - VIOLET										
POSITION 11 - ROSE	POSITION 12 - AQUA										

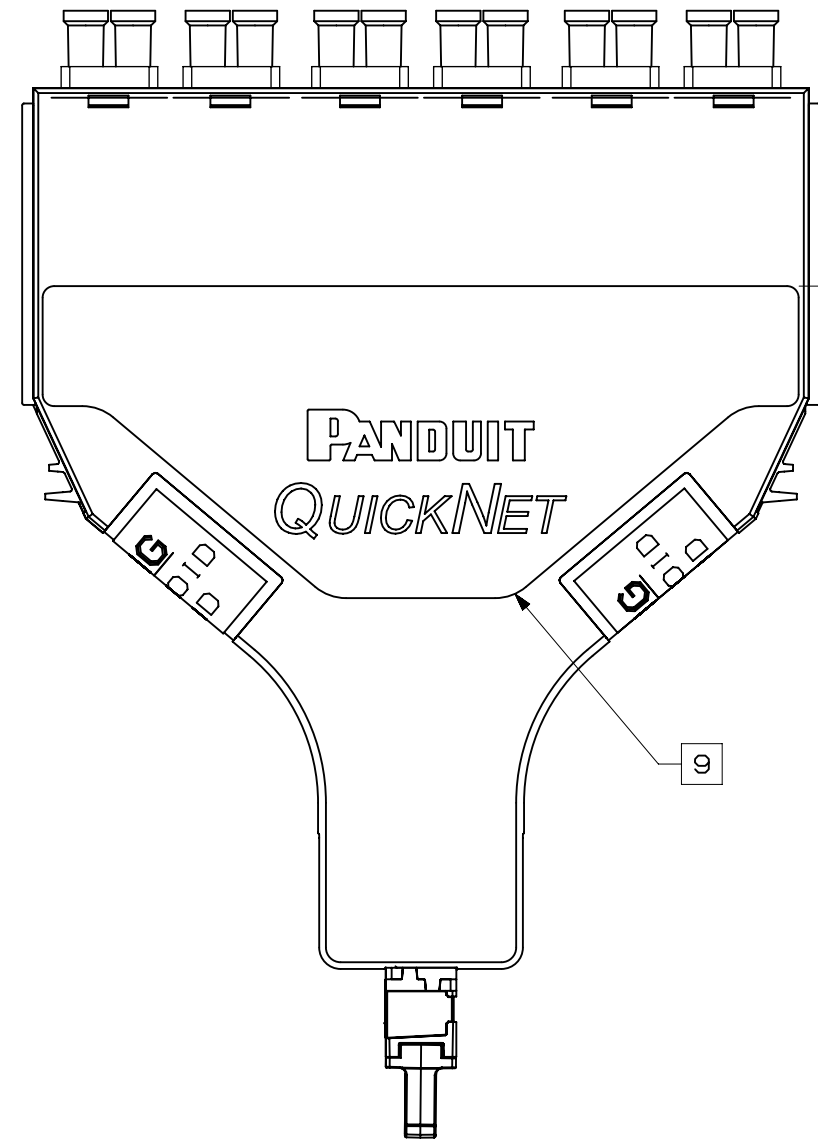
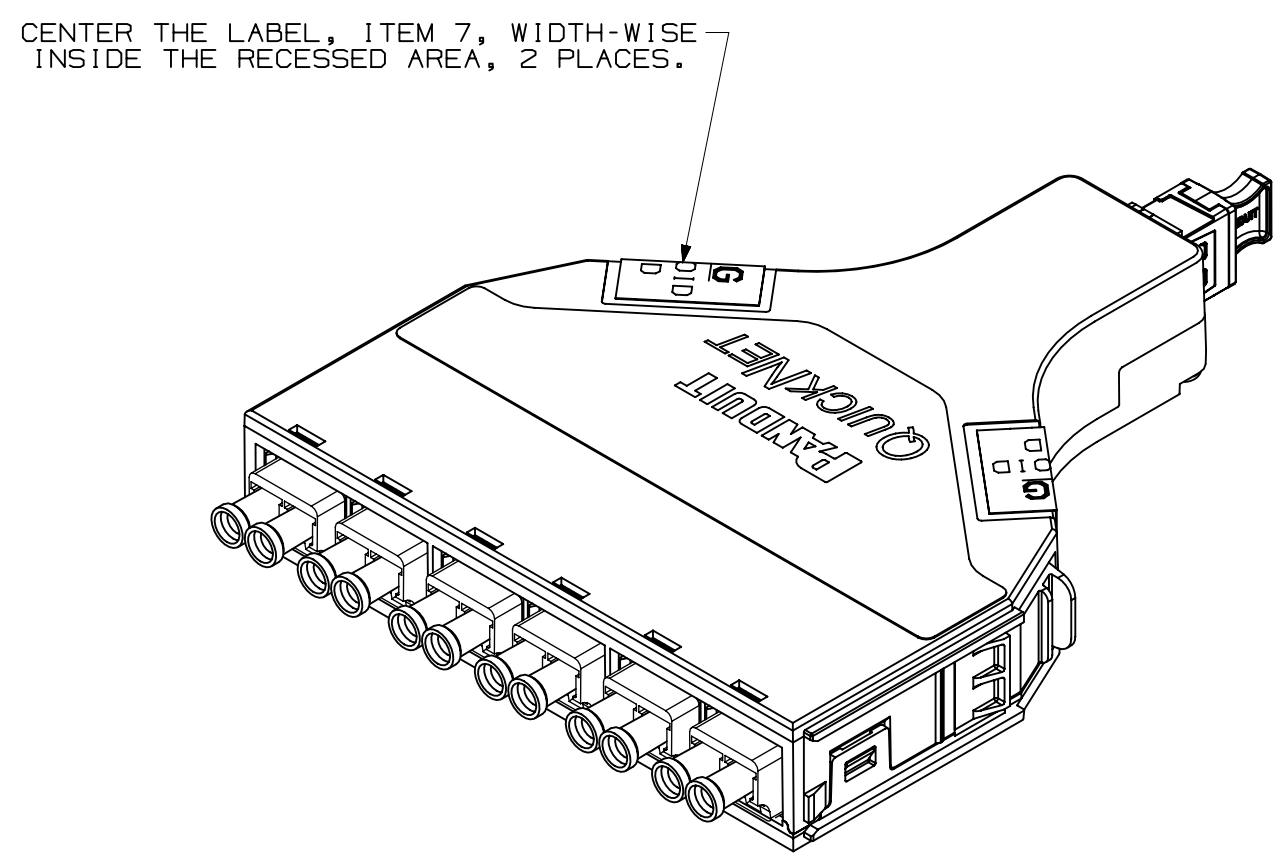
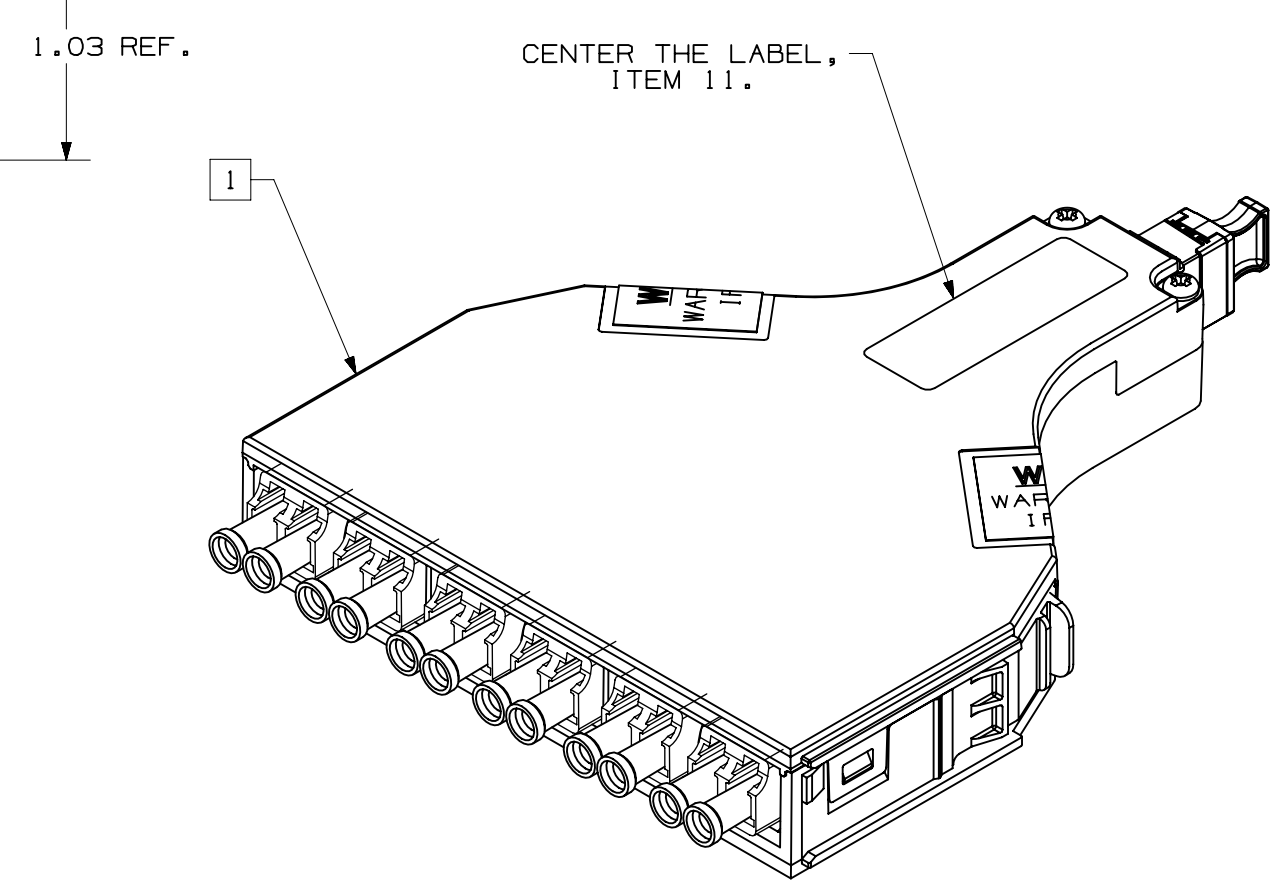
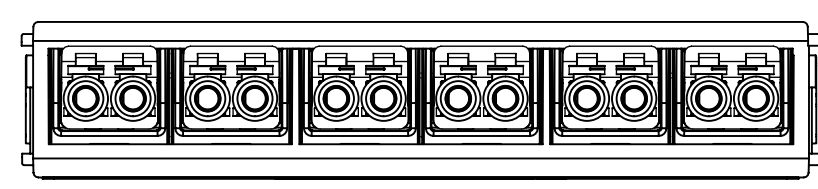
QUICKNET LC CASSETTE PART NUMBER	LC FANOUT PART NUMBER	FIBER TYPE	FIBER COUNT	DRAWING NUMBER
F05N-12-10B1	F512B5-10M10	50/125	12	13F222BE-DS
F06N-12-10B1	F612B5-10M10	62.5/125		
FOXN-12-10B1				
FOXO-12-10B1	FX12B5-10M10	OM3		
FQZN-12-10B1				
FQZO-12-10B1	FZ12B5-10M10	OM4		
FOSA-12-10B1	FS12B5-10M10	OM4+		
REMOVED				
FQWA-12-10B1	FEA12B5-10M10	OM5		
FQWO-12-10B1	FEA12B5-10M10	OM5		




TOP VIEW  
SHOWN W/O COVER AND MYLAR  
SCALE: 1 : 1



ASSEMBLY EXPLODED VIEW  
SCALE: 1.5 : 1



REV	DATE	BY	CHK	APR	DESCRIPTION	ECN
04D	9/15/21	JSP	JGD	ALMY	G. ADDED FQWO-12-10B1.	02947-70
04C	08-02-18	SAT	WJM	BJV	F. REMOVED UNTESTED (I-U) P/N.	02947-70
04B	08-02-17	SAT	JGD	ALMY	N. ADDED OM5 OPTIONS TO TABLES 1 & 4.	02947-70
04A	06-23-17	SAT	JGD	ALMY	L. REMOVED SM ASSEMBLY, F06N-12-10B1 K. WAS AM-355. J. REMOVED MYLAR COVER (ITEM 5) FROM ARTWORK AND TABLE 2.	02947-70
03	02-14-17	BSN	WJM	ALMY	H. CHANGED SINGLEMODE MPO ADAPTER TO RMPOSK1-1 G. MODULE WAS R0MDLCBL F. UPDATED LC ADAPTER P/N'S E. UPDATED MASTER MODEL WITH SNAP-TOGETHER LC ADAPTERS	02947-70
02	09-08-15	SAT	JSP	BJV	E. ADDED LC CONNECTOR LOCK SHIM. D. REPLACED TORX DRIVE SCREW WITH PHILLIPS SCREW. C. READSLCZAO-U WAS READJLCZAO-U. B. READSLCZBU-U WAS READJLCZBU-U.	02947-70
01	08-18-13	BSN	WJM	ALMY	A. LABEL TYPE CHANGED FROM 1D2487L01 TO 34110-29	02947-70
R	01-03-13	SAT	TMSE		RELEASED TO PRODUCTION	02947-70

PART NUMBER: SEE TABLE 1	PRODUCT SPECIFICATION NUMBER: PS-NS-980
PACKAGING PLAN NUMBER: N/A	PACKAGING INSTRUCTION NUMBER: PPS-274
DISPOSITION INSTRUCTION NUMBER: NS-1975	WORK INSTRUCTION NUMBER: /K/ AM-566; TM-141
<b>QUICKNET SFO CASSETTE, 12 FIBER DUPLEX LC TO MPO CASSETTE METHOD B, END 1</b> CONTROL DRAWINGS	
ITEM REVISION NUMBER: M02947ZW/04	
DRAWING FILE NAME: M02947ZW_DA/04D	
UNLESS OTHERWISE SPECIFIED, DIMENSIONAL TOLERANCES ARE: (IN 1mm) .XX ± .12, .54 ± .005 (1.127) .XX ± .01 ± .251 ANGLES ± 5°	
DRAWING NUMBER: <b>02947-70</b>	
DRWN BY: SAT	DATE: 12-28-12
CHK: TMSE	FILE: FULL
ECN: 1	SHT 1 OF 1