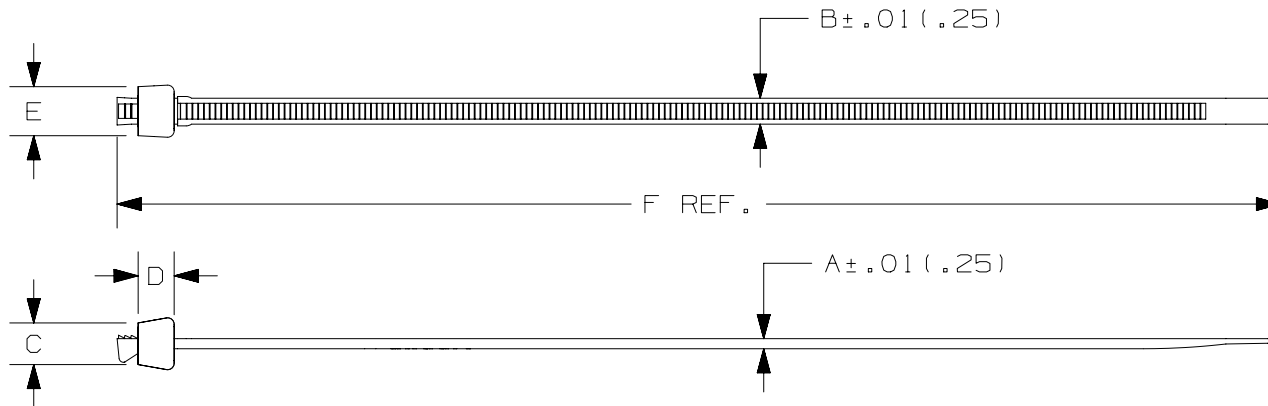


THIS COPY IS PROVIDED ON A RESTRICTED BASIS AND IS NOT TO BE USED IN ANY WAY DETRIMENTAL TO THE INTERESTS OF PANDUIT CORP.



PANDUIT PART NO. *	BUNDLE DIA.		A in (mm)	B in (mm)	C in (mm)	D in (mm)	E in (mm)	F in (mm)	MIN. LOOP TENSILE lbs. (N)	CROSS-SECTION	WEIGHT lbs./100pcs. (g)
	MIN. in (mm)	MAX. in (mm)									
SST1M	.06 (1.5)	.78 (20)	.035 (.9)	.095 (2.4)	.150 (3.8)	.125 (3.2)	.175 (4.5)	4.0 (102)	18 (80)	MINIATURE	.06 (25)
SST1.5M	.06 (1.5)	1.25 (32)	.035 (.9)	.095 (2.4)	.150 (3.8)	.125 (3.2)	.175 (4.5)	5.5 (140)	18 (80)	MINIATURE	.07 (32)
SST1.5I	.06 (1.5)	1.25 (32)	.037 (.9)	.135 (3.4)	.210 (5.3)	.147 (3.7)	.240 (6.1)	5.3 (137)	40 (178)	INTERMEDIATE	.12 (55)
SST2I	.06 (1.5)	2.00 (51)	.040 (1.0)	.135 (3.4)	.210 (5.3)	.147 (3.7)	.240 (6.1)	8.1 (206)	40 (178)	INTERMEDIATE	.17 (77)
SST3I	.06 (1.5)	3.00 (76)	.040 (1.0)	.135 (3.4)	.210 (5.3)	.147 (3.7)	.240 (6.1)	11.0 (279)	40 (178)	INTERMEDIATE	.24 (110)
SST4I	.06 (1.5)	4.00 (102)	.040 (1.0)	.135 (3.4)	.210 (5.3)	.147 (3.7)	.240 (6.1)	14.7 (375)	40 (178)	INTERMEDIATE	.31 (142)

NOTES:

*1) SEE panduit.com FOR PART NUMBER SUFFIX DESIGNATION FOR PACKAGE SIZE AND PART COLOR.

REV	DATE	BY	CHK	APR	DESCRIPTION	ECN
7	8/04/22	BWG	MPH	JADE	REVISED SST1.5M 'A' DIMENSION.	123910/00
6	5/5/15	LEF	BWG	JADE	UPDATE TITLE BLOCK CHANGED NOTES TO REF. PANDUIT.COM	5550

TITLE		STA-STRAP CABLE TIES SS SERIES	
		CUSTOMER DRAWING	
ITEM REVISION NAME		W10001CE/07	
DATASET FILE NAME		W10001CE/07	
UNLESS OTHERWISE SPECIFIED, DIMENSIONAL TOLERANCES ARE: IN (mm)		MATERIAL:	
.x ± ----- .xx ± .02 (.5)		NYLON 6.6	
.xxx ± .020 (.51) ANGLES ± -----		DRAWING NUMBER:	
THIRD ANGLE PROJECTION		SS-5550	
DRAWN BY	DATE	CHK	SCALE
LEF	5/5/15	BWG	NONE
SHT 1 OF 3		SIZE A	

D101000DA/16