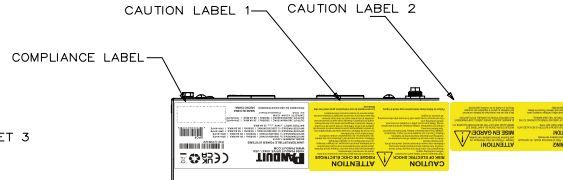
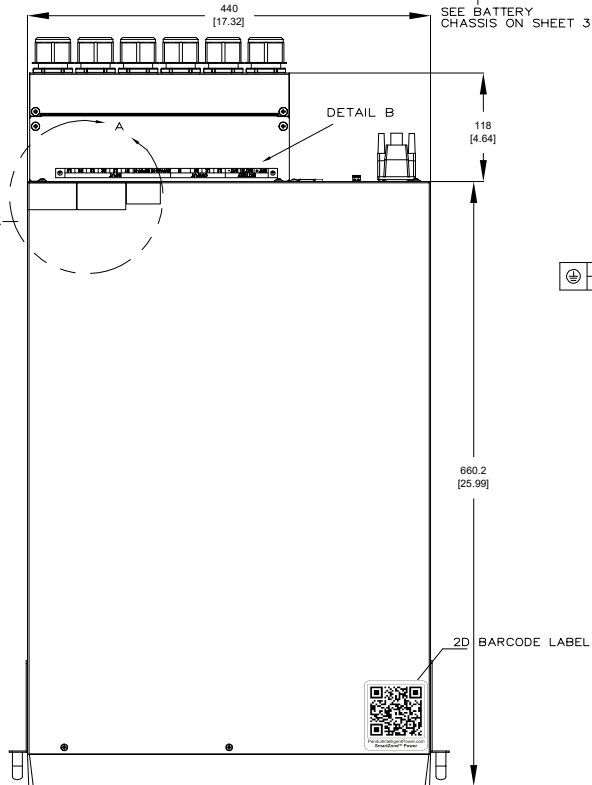


VIEW ROTATED 180°



DETAIL A
SCALE 1:3

BATTERY			OUTPUT			INPUT								
BAT +	BAT N	BAT -	L1	L2	L3	N	BYPASS-N	INPUT-N	B1	L1	B2	L2	B3	L3

DETAIL B
SCALE 1:3

SPECIFICATION:

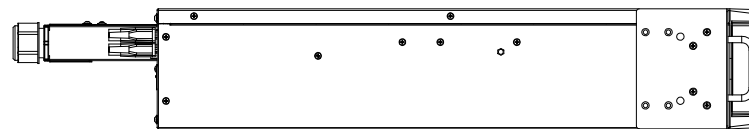
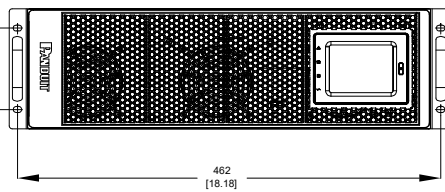
- STANDARD:
 - UPS TOPOLOGY: DOUBLE CONVERSION
 - KVA: 15
 - BATTERY TYPE: VALVE REGULATED LEAD ACID
 - INPUT PLUG: HARDWARE TERMINAL CONNECTION (L1+L2+L3+N+G)
 - NOMINAL INPUT VOLTAGE: 380/400/415 VAC
 - INPUT PHASE: 3 PHASE
 - OUTPUT PHASE: 3 PHASE/1PHASE
 - NOMINAL OUTPUT VOLTAGE: 380/400/415 VAC (3 PHASE) 220/230/240 VAC (1 PHASE)
 - OUTLET TYPE AND QTY: HARDWARE TERMINAL CONNECTION (L1+L2+L3+N+G;3X L+N+G)
 - DISPLAY TYPE: 3.5 INCH TOUCH SCREEN
 - PARALLEL PORT SUPPORT: YES
 - INPUT BREAKER TYPE: N/A
 - OUTPUT BREAKER TYPE: N/A
- ADDITIONAL: NONE
- ACCESSORY COMPONENTS:
 - P/N U15N32V CONTAINS AN INTELLIGENT NETWORK CARD(INSTALLED)
 - STABILIZER BRACKET, QTY:(4)
 - STABILIZER BRACKET CONNECTORS, QTY:(2)
 - INSTALLATION EARS, QTY:(2)
 - SAFETY WARNING SHEET,QTY:(1)
 - SELECTION GUIDE(POCKET GUIDE),QTY:(1)
 - DB9/DB9 RS232 1.5M COMMUNICATION CABLE, QTY:(1)
 - USB-A/USB-B 1.5M SERIAL COMMUNICATION CABLE, QTY:(1)
 - INCLUDES P/N:UVP480 EXTERNAL BATTERY PACK, QTY:(1),(IN A SEPARATE CARTON)SEE SHEET 3
 - INCLUDES P/N:URMKIT2 INSTALLATION RAIL KIT, QTY:(1)
 - EPO PLUG WITH SHORTING WIRE,QTY:(1),(INSTALLED)
 - BATTERY TEMPERATURE DETECTION CABLE 0.64M, QTY:(1)
 - CABLE GLAND, QTY:(6)
 - INPUT COPPER BAR(3:1 MODE, SINGLE SOURCE, FOR BYPASS CONNECTION),QTY:(1)
 - INPUT COPPER BAR(3:1 MODE, SINGLE SOURCE, FOR MAINS CONNECTION),QTY:(2)
 - INPUT COPPER BAR(3:1 MODE, DUAL SOURCE, FOR BYPASS CONNECTION),QTY:(1)
 - OUTPUT COPPER BAR(FOR 1PH OUTPUT CONNECTION),QTY:(1)
 - CABLE WIHT EBP CONNECTOR ON ONE END AND RING TERMINALS ON THE OTHER END,QTY:(1)
 - RING TERMINALS INCLUDED(Ø6/10/16/25),QTY:(5/11/3/5)
 - HEATSHRINK INCLUDED(Ø6*23MM/Ø10*30MM),QTY:(16/8)
 - PARALLEL CABLE DB15 MALE TO DB15 FEMALE 1.5M,QTY:(1)
 - REFER TO ASSOCIATED DRAWINGS FOR PHYSICAL DIMENSIONS AND SPECIFICATIONS

NOTES:

- PRIMARY DIMENSIONS ARE IN MILLIMETERS. SECONDARY DIMENSIONS ARE IN INCHES
- INSTALLATION SHALL COMPLY WITH ALL APPLICABLE NATIONAL, STATE, AND LOCAL CODES
- VISIT OUR ON-LINE CATALOG AT WWW.PANDUIT.COM FOR A CURRENT LIST OF PRODUCTS APPLICABLE FOR USE WITH THIS PRODUCT
- ALL PURCHASED ITEMS CONFORM TO C2-0834 PANDUIT SPECIFICATION FOR CHEMICAL SUBSTANCES TO BE CONTROLLED IN PRODUCT AND PACKAGING

IDENTIFICATION:

PART NUMBER	DESCRIPTION	SHIPPING WEIGHT(INCLUDES EXTERNAL BATTERY PACK) (KG)
U15S32V	SMARTZONE UPS, 15kVA, 7U (3U UPS + 4U EBP), 400V, 3 PHASE, DOUBLE-CONVERSION ON-LINE POWER PROTECTION	210
U15N32V	SMARTZONE UPS, 15kVA, 7U (3U UPS + 4U EBP), 400V, 3 PHASE, DOUBLE-CONVERSION ON-LINE POWER PROTECTION WITH INTELLIGENT NETWORK CARD	210.3



PANDUIT SMARTZONE UPS U15S32V/U15N32V CONTROL DRAWING		PART NUMBER: U15N32V DESCRIPTION: SMARTZONE UPS, 15kVA, 7U (3U UPS + 4U EBP), 400V, 3 PHASE, DOUBLE-CONVERSION ON-LINE POWER PROTECTION WITH INTELLIGENT NETWORK CARD SHIPPING WEIGHT: 210.3
DATE: 12/30/2021 BY: HL CHK: ZRZ	DATE: 12/30/2021 BY: HL CHK: ZRZ	DATE: 12/30/2021 BY: MJD CHK: APR
DIMENSIONS: 462 [18.18] x 88.9 [3.5] x 660.2 [25.99]	DIMENSIONS: 440 [17.32] x 131 [5.15] x 88.9 [3.5]	DIMENSIONS: 480 [18.90] x 131 [5.15] x 88.9 [3.5]
DIMENSIONS: 462 [18.18] x 88.9 [3.5] x 660.2 [25.99]	DIMENSIONS: 440 [17.32] x 131 [5.15] x 88.9 [3.5]	DIMENSIONS: 480 [18.90] x 131 [5.15] x 88.9 [3.5]

THIS COPY IS PROVIDED ON A RESTRICTED BASIS AND IS NOT TO BE USED IN ANY WAY DETRIMENTAL TO THE INTERESTS OF PANDUIT CORP.

PANDUIT
18900 PANDUIT DRIVE, 60487, USA
WWW.PANDUIT.COM



P/N: U15N32V

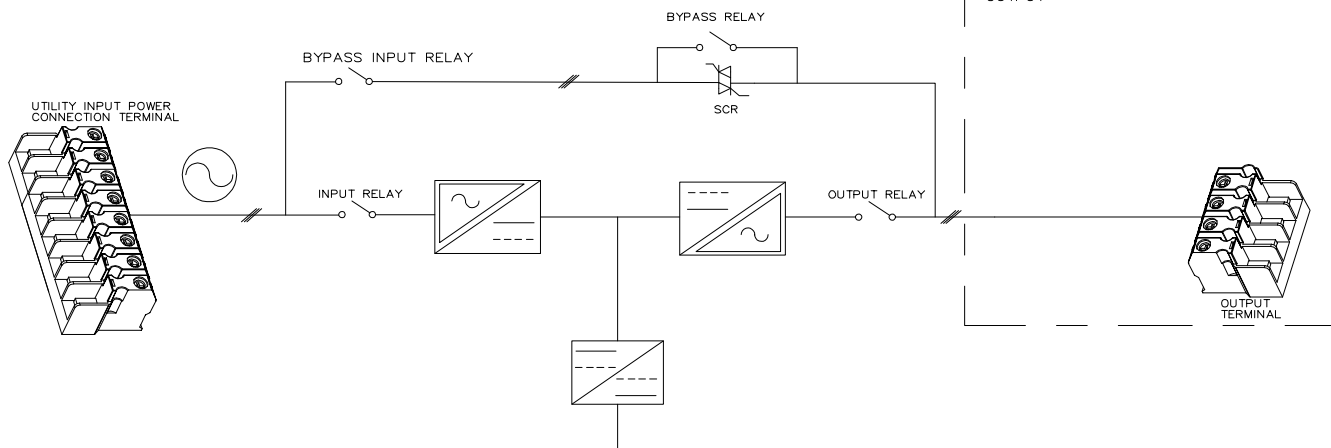
UNINTERRUPTIBLE POWER SYSTEMS

MODEL NUMBER: U15N32V
 INPUT (MAINS&3-1): 380/400/415VAC | 50/60Hz | 60.4A MAX. | 3PH+N+PE
 INPUT (MAINS&3-1): 380/400/415VAC | 50/60Hz | 99.5A MAX. | 3PH+N+PE
 INPUT (BYPASS&3-1): 380/400/415VAC | 50/60Hz | 99.5A MAX. | 3PH+N+PE
 INPUT (BYPASS&3-1): 220/230/240VAC | 50/60Hz | 99.5A MAX. | 1PH+N+PE
 BATTERY INPUT: 240V --- 32.5A MAX.

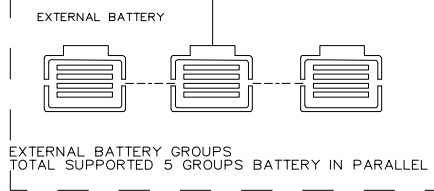
OUTPUT: 380/400/415VAC | 50/60Hz | 39.4A MAX. | 3PH+N+PE
 OUTPUT: 220/230/240VAC | 50/60Hz | 66.2A MAX. | 1PH+N+PE
 CAPACITY: 15 KVA - 15 KW
 Icc: 10 KA Protective Class: I
 MADE IN CHINA
 HECHO CHINA



UPS MODULE
 U15S32V/U15N32V
 3PH, 400V OUTPUT (L1+L2+L3+N+G)
 1PH, 230V OUTPUT (L+N+G)



LEGEND			
	DESCRIPTION		DESCRIPTION
	OUTPUT BREAKER		DC-DC CONVERTER
	RELAY		DC-AC CONVERTER
	DC-DC CONVERTER		BATTERY
	UTILITY CONNECTION TERMINAL		SCR
	OUTPUT CONNECTION TERMINAL		

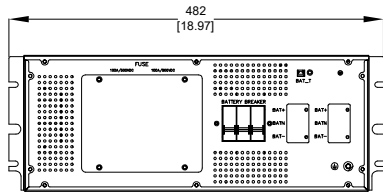


LED-V018010000
 PEC-V008000000
 MV-V018010000
 MONTOR-V018010000

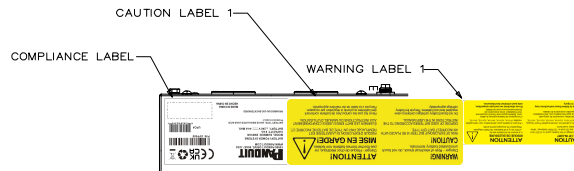
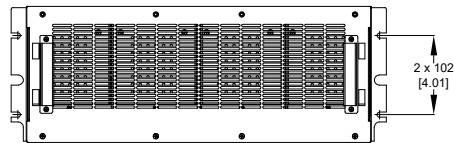
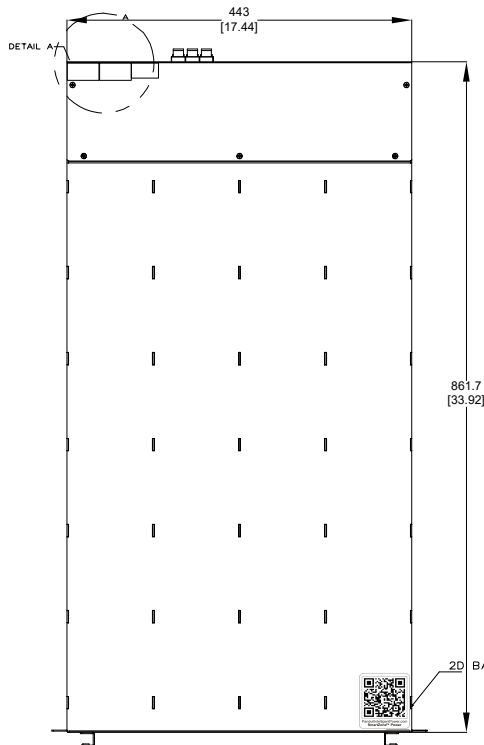
REV	DATE	BY	CHK	APR	DESCRIPTION	ECN	DATE	BY	CHK	APR	DESCRIPTION	ECN
01A	08/04/2022	HL	ZRZ	GLM/DJB	A-UPDATED DESCRIPTION B-ADDED SHEET 3	U15N32V						
02A	12/30/2023	HL	ZRZ	GLM/DJB	RELEASE TO PRODUCTION	U15N32V						

TITLE		SMARTZONE UPS U15S32V/U15N32V	
CONTROL DRAWING		N/A	
REV NUMBER		U15S32V/U15N32V/01	
DRAWING NUMBER		U15S32V/U15N32V-DA/01A	
UNLESS OTHERWISE SPECIFIED DIMENSIONAL TOLERANCES ARE IN (mm)		N/A	
THIRD ANGLE PROJECTION		U15N32V-DC	
DATE	12/30/2023	BY	MJD
DESCRIPTION	VARIOUS	SHEET	1 OF 2

THIS COPY IS PROVIDED ON A RESTRICTED BASIS AND IS NOT TO BE USED IN ANY WAY DETRIMENTAL TO THE INTERESTS OF PANDUIT CORP.



VIEW ROTATED 180°



DETAIL A
SCALE 1:2



UVP480 REFERENCE IMAGE

REV	DATE	BY	CHK	APP	DESCRIPTION	U15N32V
01A	08/04/2021	HL	ZRZ	QM/D/B	A. UPDATED DESCRIPTION	U15N32V
01B	02/24/2022	HL	ZRZ	QM/D/B	B. ADDED SHEET 3	U15N32V
01C	02/24/2022	HL	ZRZ	QM/D/B	RELEASE TO PRODUCTION	U15N32V
01D	02/24/2022	HL	ZRZ	QM/D/B	RELEASE TO PRODUCTION	U15N32V

THIS DRAWING IS THE PROPERTY OF PANDUIT CORPORATION. IT IS TO BE USED ONLY FOR THE PURPOSES SPECIFIED HEREON. IT IS NOT TO BE REPRODUCED, COPIED, OR TRANSMITTED IN ANY FORM OR BY ANY MEANS, ELECTRONIC OR MECHANICAL, INCLUDING PHOTOCOPYING, RECORDING, OR BY ANY INFORMATION STORAGE AND RETRIEVAL SYSTEM, WITHOUT THE WRITTEN PERMISSION OF PANDUIT CORPORATION.	
TITLE: SMARTZONE UPS U15S32V/U15N32V CONTROL DRAWING	
PART NUMBER: U15S32V/U15N32V/D1 U15S32V/U15N32V-PA/01A U15S32V/U15N32V-PA/01A	DRAWN: N/A CHECKED: N/A DATE: 12/30/2021 MFG: VARIOUS
PART NUMBER: U15S32V/U15N32V-DC U15S32V/U15N32V-DC	DRAWN: N/A CHECKED: N/A DATE: 12/30/2021 MFG: VARIOUS