

THIS COPY IS PROVIDED ON A RESTRICTED BASIS AND IS NOT TO BE USED IN ANY WAY DETRIMENTAL TO THE INTERESTS OF PANDUIT CORP.

KNOCK-OUT FOR
PDU POWER CORD

INTEGRAL
CABINET TOP
CABLE ROUTING
SYSTEM

FRONT
PERFORATED
SINGLE HINGE
DOOR

REAR
PERFORATED
SPLIT
DOORS

SPLIT SIDE PANEL

SPLIT SIDE PANEL

1. VISIT OUR ON-LINE CATALOG AT WWW.PANDUIT.COM FOR A LIST OF CURRENT PARTS APPLICABLE FOR USE WITH THIS PRODUCT.
2. PRIMARY DIMENSIONS ARE IN MILLIMETERS.
3. RAIL ADJUSTMENT MEASUREMENTS ARE TAKEN FROM THE FRONT FACE OF EACH EQUIPMENT RAIL. INDEPENDENT ADJUSTABLE REAR EQUIPMENT MOUNTING RAILS (EIA) ADJUST FROM 65mm [2.6in] TO 357mm [14.05in] AND FROM 521mm [20.5in] TO 765mm [30.1in] WITH PDU BRACKETS AND CABLE MANAGEMENT FINGERS IN PLACE. REMOVING PDU BRACKETS AND OPTIONAL FINGERS INCREASES MAXIMUM E-RAIL SPAN TO 911mm [35.86in].
4. CAN BE USED WITH ANY 19" EIA STANDARD COMPONENT IN ADDITION TO ALL PANDUIT HORIZONTAL CABLE MANAGEMENT AND PATCH PANEL PRODUCTS.
5. EIA UNIVERSAL STANDARD HOLE PROGRESSION ON EQUIPMENT RAILS
15.88mm [.625in], 15.88mm [.625in],
12.70mm [.5in], 15.88mm [.625in],
15.88mm [.625in], 12.7mm [.5in]...ETC.
6. PARTS SUPPLIED:
-BASE CABINET
-FRONT PERFORATED SINGLE HINGE DOOR (SEE CHART ON SHEET 2)
-REAR PERFORATED SPLIT DOOR (SEE CHART ON SHEET 2)
-EQUIPMENT RAILS FRONT & REAR (SEE CHART ON SHEET 2)
-PDU BRACKETS (SEE CHART ON SHEET 2)
-CASTERS (SEE CHART ON SHEET 2)
-CABINET HARDWARE KIT
-INSTRUCTION SHEET
7. RACK UNIT SPACING NUMERALS ARE CLEARLY PRINTED ON EQUIPMENT MOUNTING RAILS.
8. FULLY BONDED STRUCTURE WHEN ASSEMBLED PER INSTRUCTIONS.
9. STATIC LOAD RATING. 1360 Kg (3000 LBS)
10. ROLLING LOAD RATING. 1133 Kg (2500 LBS)
11. SINGLE POINT GROUND LOCATIONS AT TOP AND BOTTOM OF CABINET.
12. ALL CABINET RAILS ARE INSTALLED NUMBERS UP.
13. MAXIMUM EQUIPMENT DEPTH, 959mm [37.75].

TITLE

NET-ACCESS S-TYPE CABINET W/INTEGRAL
CABINET TOP CABLE ROUTING SYSTEM 600mm
WIDE X 1070mm DEEP FAMILY
CUSTOMER DRAWING

ITEM REVISION NAME

12V352BC/01.PRT

DATASET FILE NAME

12V352BC_DC/01A.PRT

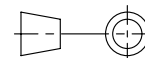
PANDUIT

MATERIAL:

N/A

DRAWING NUMBER:

12V352BC-DC



THIRD ANGLE
PROJECTION

DRAWN BY

PBS

DATE

4-12-13

CHK

SCALE

NONE

SHT 1 OF 5

SIZE



A

01A	12-12-14	MDCA	ADP	TCN	FLOOR MOUNT DIMENSIONS UPDATED	V09000BX	
00A	4-12-13	PBS	JDW	JDWE	RELEASED TO PRODUCTION	12V352BC-DC	
REV	DATE	BY	CHK	APR	DESCRIPTION	ECN	

THIS COPY IS PROVIDED ON A RESTRICTED BASIS AND IS NOT TO BE USED IN ANY WAY DETRIMENTAL TO THE INTERESTS OF PANDUIT CORP.

PART NO.	DESCRIPTION	SINGLE HINGE FRONT DOOR	SPLIT REAR DOOR	SPLIT SIDE PANEL	FRONT CAGE NUT E-RAIL	REAR CAGE NUT FINGER MGMT E-RAIL	REAR CAGE NUT VERTICAL PATCH E-RAIL	STANDARD PDU BRACKETS	CASTERS	CABLE MGMT FINGERS	CABINET WEIGHT FULLY UNPACKAGED	CABINET WEIGHT SHIPPING WEIGHT
S6212*T	NET-ACCESS S-TYPE CABINET 600mm X 42RU X 1070mm DEEP	01	01	02	02	02	00	02	04	00	123 Kg/EACH 272 LBS/EACH	143 Kg/EACH 317 LBS/EACH
S6512*T	NET-ACCESS S-TYPE CABINET 600mm X 45RU X 1070mm DEEP	01	01	02	02	02	00	02	04	00	127 Kg/EACH 282 LBS/EACH	148 Kg/EACH 327 LBS/EACH
S6812*T	NET-ACCESS S-TYPE CABINET 600mm X 48RU X 1070mm DEEP	01	01	02	02	02	00	02	04	00	132 Kg/EACH 292 LBS/EACH	152 Kg/EACH 337 LBS/EACH
S6219*T	NET-ACCESS S-TYPE CABINET 600mm X 42RU X 1070mm DEEP	01	01	00	02	02	00	02	04	00	90 Kg/EACH 199 LBS/EACH	110 Kg/EACH 244 LBS/EACH
S6519*T	NET-ACCESS S-TYPE CABINET 600mm X 45RU X 1070mm DEEP	01	01	00	02	02	00	02	04	00	94 Kg/EACH 209 LBS/EACH	115 Kg/EACH 254 LBS/EACH
S6819*T	NET-ACCESS S-TYPE CABINET 600mm X 48RU X 1070mm DEEP	01	01	00	02	02	00	02	04	00	99 Kg/EACH 219 LBS/EACH	119 Kg/EACH 264 LBS/EACH

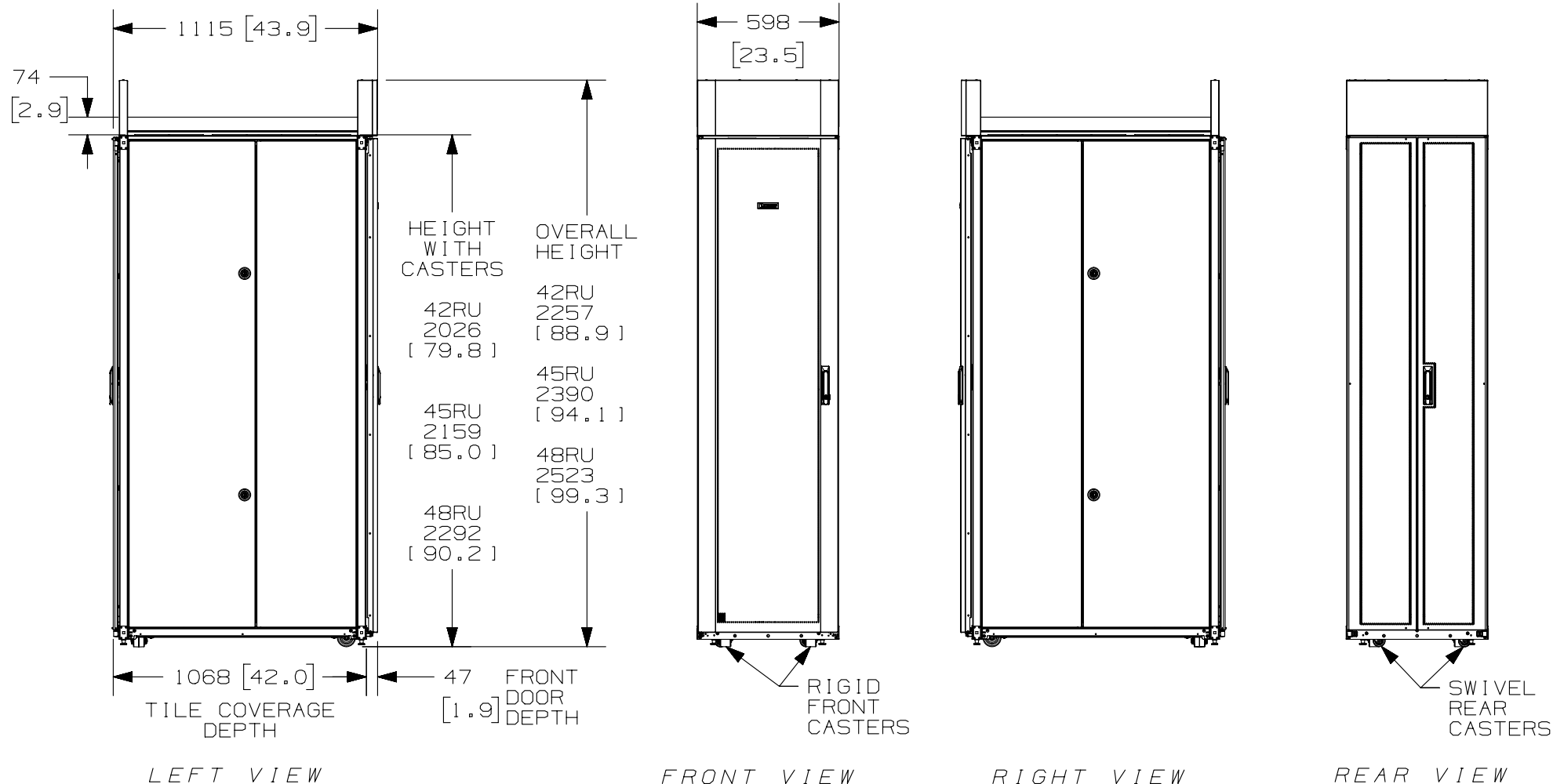
* DENOTES COLOR
 "B" = BLACK
 "W" = WHITE

							TITLE NET-ACCESS S-TYPE CABINET W/INTEGRAL CABINET TOP CABLE ROUTING SYSTEM 600mm WIDE X 1070mm DEEP FAMILY CUSTOMER DRAWING						
							ITEM REVISION NAME 12V352BC/01.PRT						
							DATASET FILE NAME 12V352BC_DC/01A.PRT						
											MATERIAL: N/A		
01A	12-12-14	MDCA	ADP	TCN	SEE SHEET 1 OF 5 FOR REVISIONS	V09000BX	 THIRD ANGLE PROJECTION				DRAWING NUMBER: 12V352BC-DC		
00A	4-12-13	PBS	JDW	JDWE	SEE SHEET 1 OF 5 FOR REVISIONS	12V352BC-DC							
REV	DATE	BY	CHK	APR	DESCRIPTION	ECN	DRAWN BY PBS	DATE 4-12-13	CHK	SCALE NONE	SHT 2 OF 5	SIZE A	

2

1

THIS COPY IS PROVIDED ON A RESTRICTED BASIS AND IS NOT TO BE USED IN ANY WAY DETRIMENTAL TO THE INTERESTS OF PANDUIT CORP.

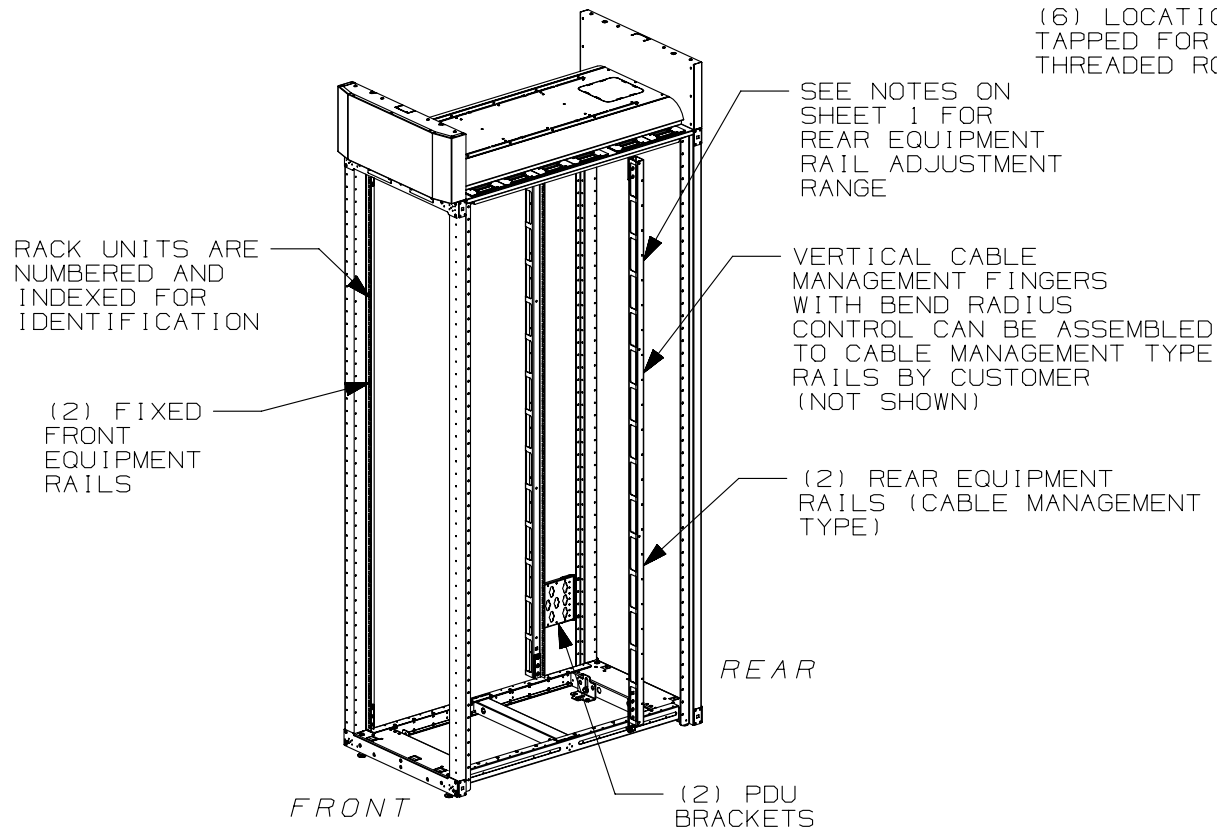


							TITLE		NET-ACCESS S-TYPE CABINET W/INTEGRAL CABINET TOP CABLE ROUTING SYSTEM 600mm WIDE X 1070mm DEEP FAMILY			
									CUSTOMER DRAWING			
							ITEM REVISION NAME		12V352BC/01.PRT		<div>PANDUIT</div>	
							DATASET FILE NAME		12V352BC_DC/01A.PRT			
											MATERIAL :	
											N/A	
											DRAWING NUMBER :	
01A	12-12-14	MDCA	ADP	TCN	SEE SHEET 1 OF 5 FOR REVISIONS	V09000BX	<div><div><div></div><div></div></div><div><div></div><div></div></div></div> THIRD ANGLE PROJECTION		12V352BC -DC			
REV	DATE	BY	CHK	APR	DESCRIPTION	ECN	DRAWN BY	DATE	CHK	SCALE	SHT 3 OF 5	SIZE
							PBS	4-12-13		NONE		A

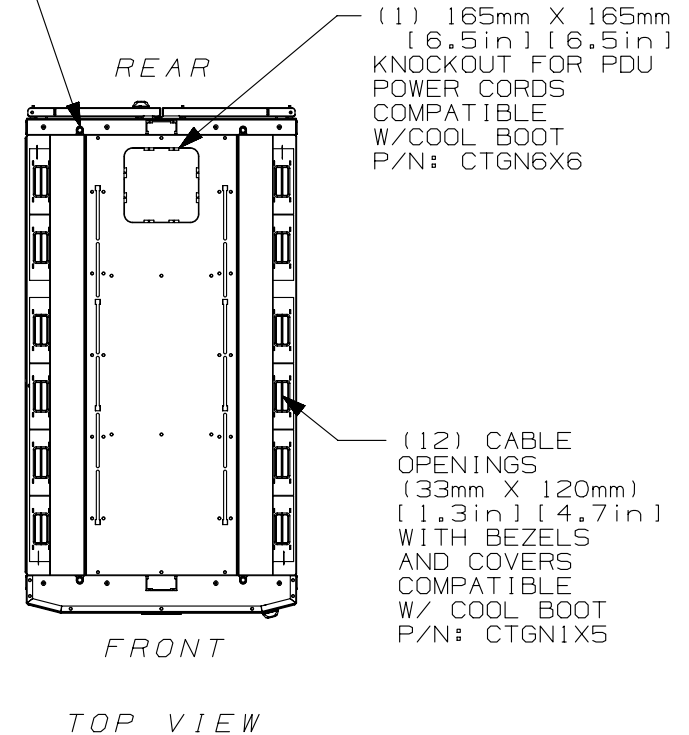
2

1

THIS COPY IS PROVIDED ON A RESTRICTED BASIS AND IS NOT TO BE USED IN ANY WAY DETRIMENTAL TO THE INTERESTS OF PANDUIT CORP.


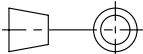


(6) LOCATIONS TAPPED FOR M10 THREADED ROD



FRONT DOOR, REAR DOOR, AND SIDE PANELS NOT SHOWN

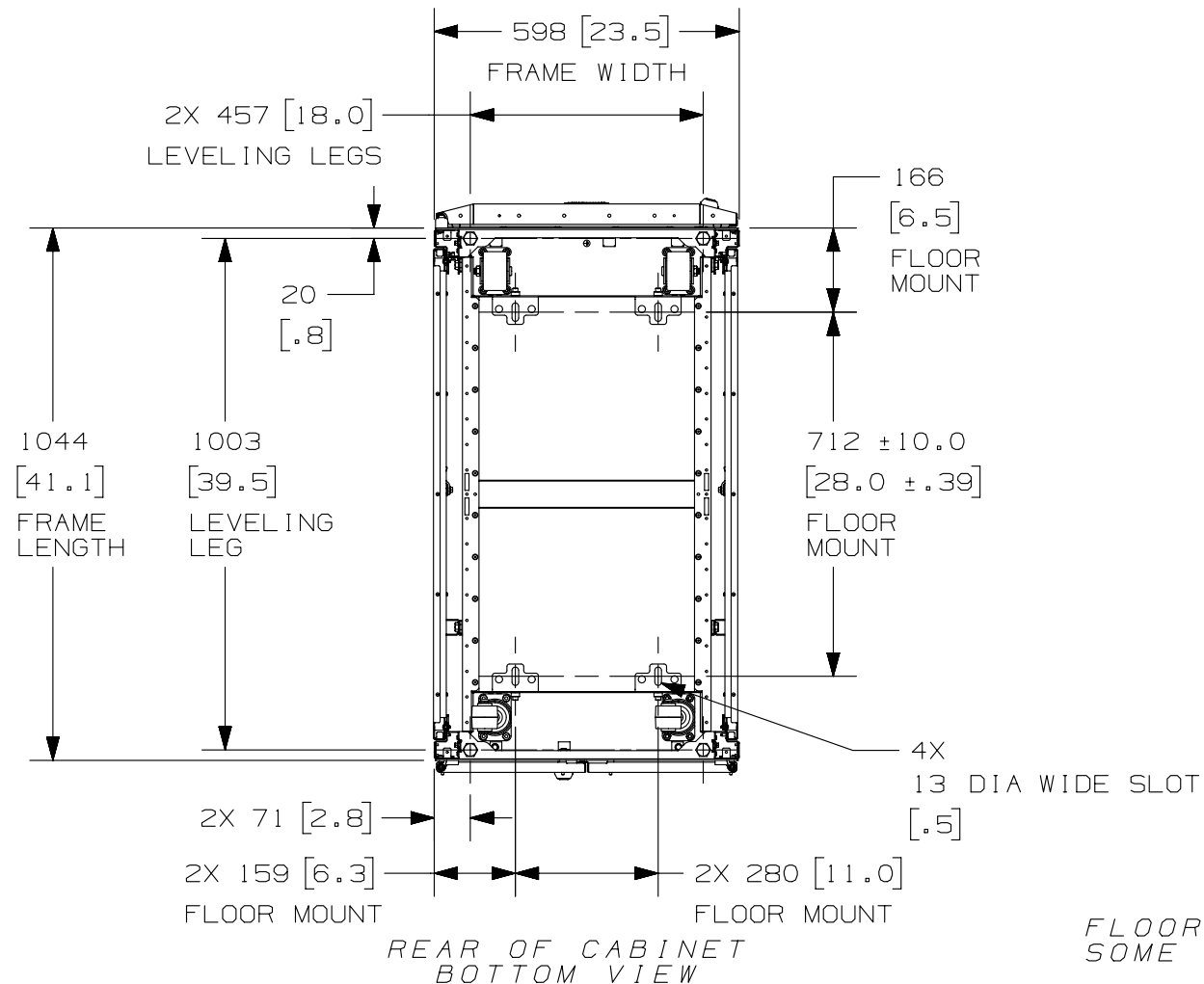
01A	12-12-14	MDCA	ADP	TCN	SEE SHEET 1 OF 5 FOR REVISIONS	V09000BX
00A	4-12-13	PBS	JDW	JDWE	SEE SHEET 1 OF 5 FOR REVISIONS	12V352BC-DC
REV	DATE	BY	CHK	APR	DESCRIPTION	ECN

TITLE NET-ACCESS S-TYPE CABINET W/INTEGRAL CABINET TOP CABLE ROUTING SYSTEM 600mm WIDE X 1070mm DEEP FAMILY CUSTOMER DRAWING					
ITEM REVISION NAME 12V352BC/01.PRT					
DATASET FILE NAME 12V352BC_DC/01A.PRT					
 THIRD ANGLE PROJECTION				MATERIAL: N/A	
				DRAWING NUMBER: 12V352BC-DC	
DRAWN BY PBS	DATE 4-12-13	CHK	SCALE NONE	SHT 4 OF 5	SIZE A

2

1

THIS COPY IS PROVIDED ON A RESTRICTED BASIS AND IS NOT TO BE USED IN ANY WAY DETRIMENTAL TO THE INTERESTS OF PANDUIT CORP.

FLOOR MOUNTING HOLE LOCATIONS -
SOME PARTS REMOVED FOR CLARITY

TITLE
NET-ACCESS S-TYPE CABINET W/INTEGRAL
CABINET TOP CABLE ROUTING SYSTEM 600mm
WIDE X 1070mm DEEP FAMILY
CUSTOMER DRAWING

ITEM REVISION NAME
12V352BC/01.PRT

DATASET FILE NAME
12V352BC_DC/01A.PRT

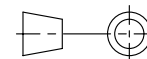
PANDUIT

MATERIAL:

N/A

DRAWING NUMBER:

12V352BC-DC

THIRD ANGLE
PROJECTION

DRAWN BY PBS	DATE 4-12-13	CHK	SCALE NONE	SHT 5 OF 5	SIZE A
-----------------	-----------------	-----	---------------	------------	-----------

REV	DATE	BY	CHK	APR	DESCRIPTION	ECN
01A	12-12-14	MDCA	ADP	TCN	SEE SHEET 1 OF 5 FOR REVISIONS	V09000BX
00A	4-12-13	PBS	JDW	JDWE	SEE SHEET 1 OF 5 FOR REVISIONS	12V352BC-DC

2

1