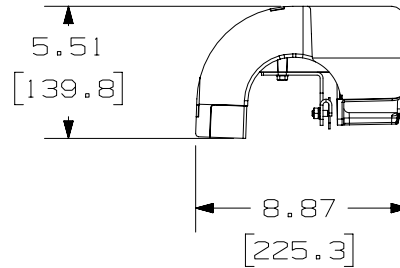
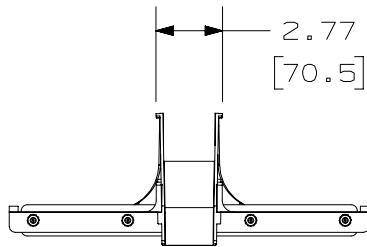
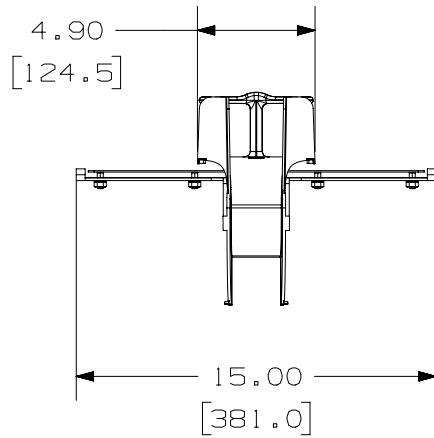


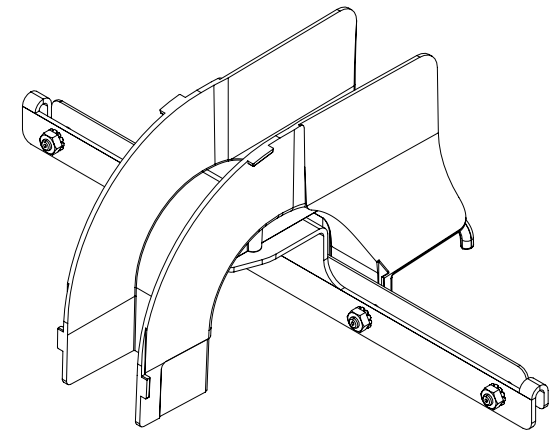
THIS COPY IS PROVIDED ON A RESTRICTED BASIS AND IS NOT TO BE USED IN ANY WAY DETRIMENTAL TO THE INTERESTS OF PANDUIT CORP.



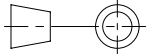
PANDUIT P/N	WEIGHT
PWBSPJ2BL	2.36 LBS/EACH (1070.5g)/EACH

NOTES:

- VISIT OUR ON-LINE CATALOG AT WWW.PANDUIT.COM FOR A LIST OF CURRENT PARTS APPLICABLE FOR USE WITH THIS PRODUCT.
- DIMENSIONS IN [] ARE METRIC.
- ALL MATERIALS AND COMPONENTS USED MEET THE MATERIAL RESTRICTIONS OF RoHS (EUROPEAN DIRECTIVE 2011/65/EU ON THE RESTRICTION OF HAZARDOUS SUBSTANCES) AS PROPOSED BY THE RoHS TECHNICAL ADAPTATION COMMITTEE.
- PART INCLUDES:
 - 1- INNER MOUNTING BRACKET
 - 1- OUTER MOUNTING BRACKET
 - 1- SPILL-OVER
 - 1- CABLE MANAGER
 - 4- 1/4-20 KEPS NUT
 - 2- SPILL-OVER MOUNTING SCREW



REV	DATE	BY	CHK	APR	DESCRIPTION	ECN
02C	12-14-23	SAT	DWR	EB	B. UPDATED TITLE.	00510EDU-DC
02B	4/18/22	JSP	DWR	ML	A. ADDED WEIGHT CHART.	00510EDU-DC
02A	12-17-20	SAT	JSP	ML	INITIAL RELEASE	00510EDU-DC

TITLE WIRE BASKET SPILLOVER EXIT 2" (50mm)									
CUSTOMER DRAWING									
ITEM REVISION NAME 00510EDU/02					PANDUIT				
DATASET FILE NAME 00510EDU_DC/02C									
 THIRD ANGLE PROJECTION					DRAWING NUMBER 00510EDU-DC				
MATERIAL C.R.S.									
DRAWN BY SAT	DATE 12-16-20	CHK JSP	SCALE NONE	SHEET 1 OF 1			SIZE A		