

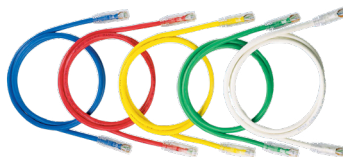
# NetKey™ Category 6A UTP Patch Cords

North America, Latin America,  
Europe, Middle East, Africa

**PANDUIT**®  
SPECIFICATION SHEET

## SPECIFICATIONS

Category 6A/Class EA UTP; patch cords shall be constructed of 26 AWG unshielded twisted pair stranded copper cable with a UTP modular plug on each end. Patch cords shall be offered in multiple colors for design flexibility with a strain relief boot on each modular plug. All patch cords shall be wired to be compatible with both T568A and T568B wiring schemes.



## TECHNICAL INFORMATION

<b>Category 6A/Class EA performance:</b>	Exceeds ANSI/TIA-568.2-D Category 6A and ISO 11801 Class EA channel requirements at swept frequencies up to 500 MHz Meets ANSI/TIA-568.2-D and ISO 11801 Category 6 component requirements at swept frequencies up to 250 MHz
<b>FCC compliance:</b>	Complies with ANSI/TIA-1096-A (formerly FCC Part 68); contacts plated with 50 microns of gold for superior performance
<b>IEC compliance:</b>	Meets IEC 60603-7
<b>PoE compliance:</b>	Supports IEEE 802.3af/802.3at and 802.3bt type 3 and type 4 PoE applications
<b>c(UL)us compliance:</b>	UL 1863 and CAN/CSA-C22.2 (UL File E129886)
<b>RoHS compliance:</b>	Compliant
<b>Cable diameter:</b>	0.25 in. (6.4mm)
<b>Flame rating:</b>	CM/LSZH dual rated

## KEY FEATURES AND BENEFITS

<b>100% Performance tested for wire map, NEXT, and return loss:</b>	Confidence that each patch cord delivers specified performance
<b>Integral pair manager:</b>	Optimizes performance and consistency by reducing untwist at plug
<b>Patented tangle free latch:</b>	Prevents snags and provides easy release saving time on frequent moves, adds, and changes
<b>Slender strain relief boot:</b>	Provides easy access in high-density applications
<b>Identification:</b>	Provides identification of performance level, length, and quality control number for future traceability
<b>Variety of colors and lengths available:</b>	Meets individual length and color-coding requirements

## APPLICATIONS

The NetKey Category 6A UTP Patch Cords are a component of the NetKey Category 6A Copper Cabling System. Interoperable and backward compatible, this end-to-end system provides design flexibility to protect network investments well into the future. Applications include:

- 10GBASE-T Ethernet
- Wireless deployment
- Power over Ethernet
- Video streaming

### NetKey Category 6A UTP Patch Cords

**Foot lengths:** NK6APC<sup>^</sup>A

**Meter lengths:** NK6APC<sup>\*\*</sup>M<sup>^</sup>

### NetKey Category 6A UTP Jack Modules

**PD style module:** NK6X88M<sup>^^</sup>

### NetKey Patch Panels with Labels

**24-port, 1 RU (with 6 NK4MFL):** NKFP24

**48-port, 2 RU (with 12 NK4MFL):** NKFP48

### NetKey Patch Panels without Labels

**24-port, 1 RU (with 6 NK4MFL):** NKFP24

**48-port, 2 RU (with 12 NK4MFL):** NKFP48

### Strain Relief Bars

**Straight:** SRBS19BL-XY

**Extended 2":** SRB19BLY

**With hook and loop ties:** SRBM19BLY

**With adjustable clips:** SRBWCY

**Deep, 5":** SRB19D5BL

**Deep, 7":** SRB19D7BL

**Multi-depth:** SRB19MDBL

\* Foot Lengths: 1-20, 25, 30, 40, 50 ft.

\*\* Meter Lengths: 1, 2, 3, 4, 5, 7, 10, 12, 15 meters

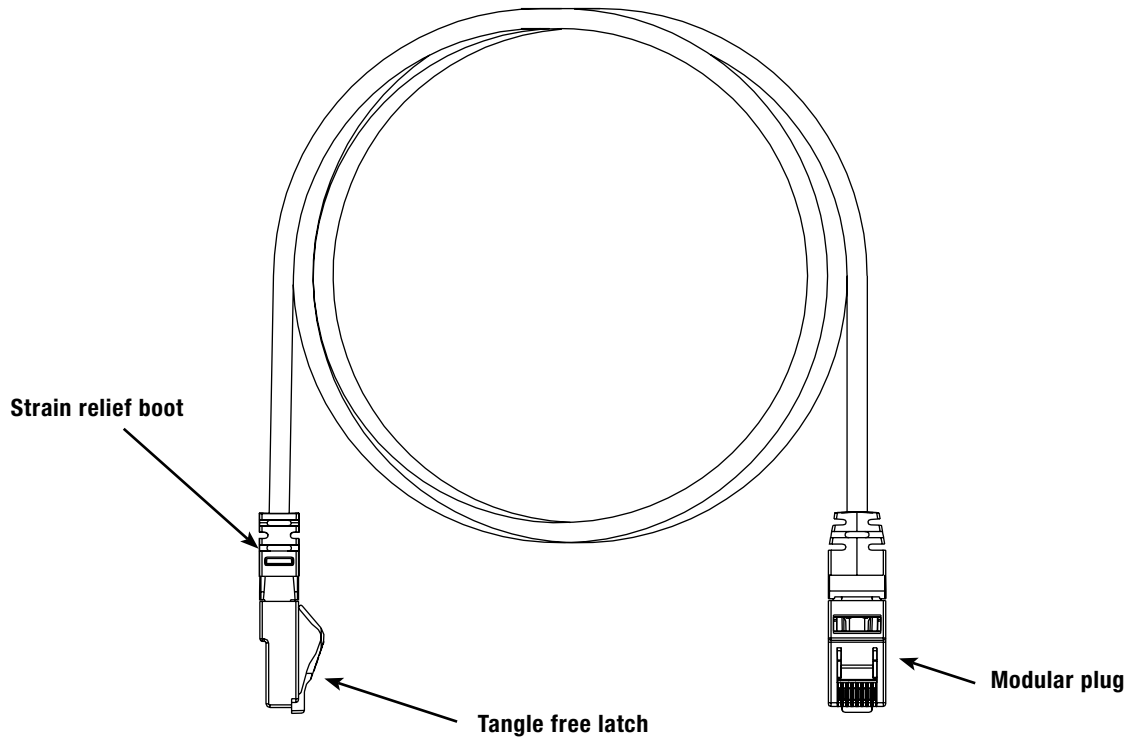
<sup>^</sup>Color other than Off White: BU (Blue), BL (Black), GR (Green), GY (Gray), RD (Red), YL (Yellow)

<sup>^^</sup>Colors: BU (Blue), BL (Black), WH (White), GR (Green), RD (Red), YL (Yellow), IG (International Gray), EI (Electric Ivory), IW (Off White)

∠Lengths 1m to 15m or 1 foot to 49 feet are guaranteed to meet TIA and ISO component and channel requirements. Lengths greater than 15m or 49 feet are guaranteed to meet ISO component and both TIA and ISO channel requirements.

# NetKey™ Category 6A UTP Patch Cords

## ENGINEERING DRAWING



Dimensions are in inches. [Dimensions in brackets are metric].

### WORLDWIDE SUBSIDIARIES AND SALES OFFICES

PANDUIT US/CANADA  
Phone: 800.777.3300

PANDUIT EUROPE LTD.  
London, UK  
Phone: 44.20.8601.7200

PANDUIT SINGAPORE PTE. LTD.  
Republic of Singapore  
Phone: 65.6305.7575

PANDUIT JAPAN  
Tokyo, Japan  
Phone: 81.3.6863.6000

PANDUIT LATIN AMERICA  
Guadalajara, Mexico  
Phone: 52.33.3777.6000

PANDUIT AUSTRALIA PTY. LTD.  
Victoria, Australia  
Phone: 61.3.9794.9020

For a copy of Panduit product warranties, log on to [www.panduit.com/warranty](http://www.panduit.com/warranty)

# PANDUIT®

For more information  
**Visit us at [www.panduit.com](http://www.panduit.com)**  
Contact Customer Service by email: [cs@panduit.com](mailto:cs@panduit.com)  
or by phone: 800.777.3300

© 2024 Panduit Corp.  
ALL RIGHTS RESERVED.  
COSP565-WW-ENG  
3/2024