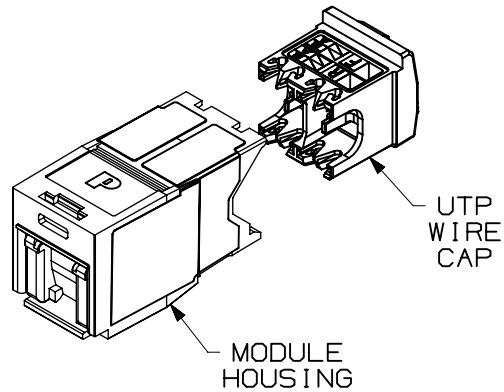
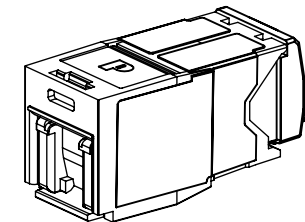
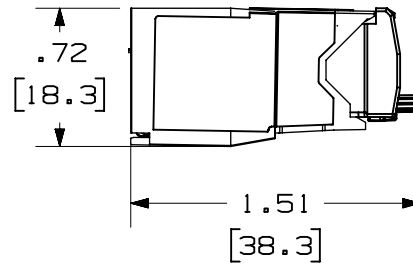
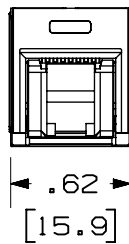


THIS COPY IS PROVIDED ON A RESTRICTED BASIS AND IS NOT TO BE USED IN ANY WAY DETRIMENTAL TO THE INTERESTS OF PANDUIT CORP.



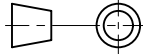
NOTES:

1. VISIT OUR ON-LINE CATALOG AT WWW.PANDUIT.COM FOR A LIST OF CURRENT PARTS APPLICABLE FOR USE WITH THIS PRODUCT.
2. DIMENSIONS IN [] ARE METRIC.
3. ALL MATERIALS AND COMPONENTS USED MEET THE MATERIAL RESTRICTIONS OF RoHS (EUROPEAN DIRECTIVE 2011/65/EU ON THE RESTRICTION OF HAZARDOUS SUBSTANCES) AS PROPOSED BY THE RoHS TECHNICAL ADAPTATION COMMITTEE.
4. WEIGHT: 1.504 LBS/100 PCS [682 g/100 PCS]
5. PART INCLUDES:
 - 1- MODULE HOUSING: UL94V-0 PC
 - 1- WIRE CAP: UL94V-0 PC
6. BLUE WIRE CAP IS COLOR CODED FOR T568A AND T568B WIRING SCHEMES.
7. ALL CATEGORY 6A, 8 POSITION 8 WIRE CONNECTOR MODULES ARE UNIVERSAL IN DESIGN. THEY ACCEPT SIX AND EIGHT POSITION MODULAR PLUGS WITHOUT DAMAGE.
8. SPRING SHUTTER DOOR OPENS AND CLOSES AUTOMATICALLY WITH PLUG INSERTION AND REMOVAL.
9. SHUTTER DOOR PREVENTS THE ACCUMULATION OF DUST PER IP-40 PROTECTION RATING STANDARDS.



ACTUAL SIZE

01A	7-29-21	BJN	ROJC	TMBA	UPDATED SHUTTER DOOR	00075SAV-01
00A	11-16-19	BJN	ROJC	TMBA	RELEASED TO PRODUCTION	M09000KV
REV	DATE	BY	CHK	APR	DESCRIPTION	ECN

PART NUMBER						CJH6X88TG**				
TITLE						MINI-COM CATEGORY 6A UTP SPRING SHUTTERED JACK MODULE CUSTOMER DRAWING				
ITEM REVISION NAME						00075SAV/01				
DATASET FILE NAME						00075SAV_DC01/01A				
						THIRD ANGLE PROJECTION				
MATERIAL						SEE NOTE 5		DRAWING NUMBER		
								00075SAV-01		
DRAWN BY		DATE		CHK		SCALE		SHEET 1 OF 1		SIZE
BJN		11-15-19		ROJC		FULL				A