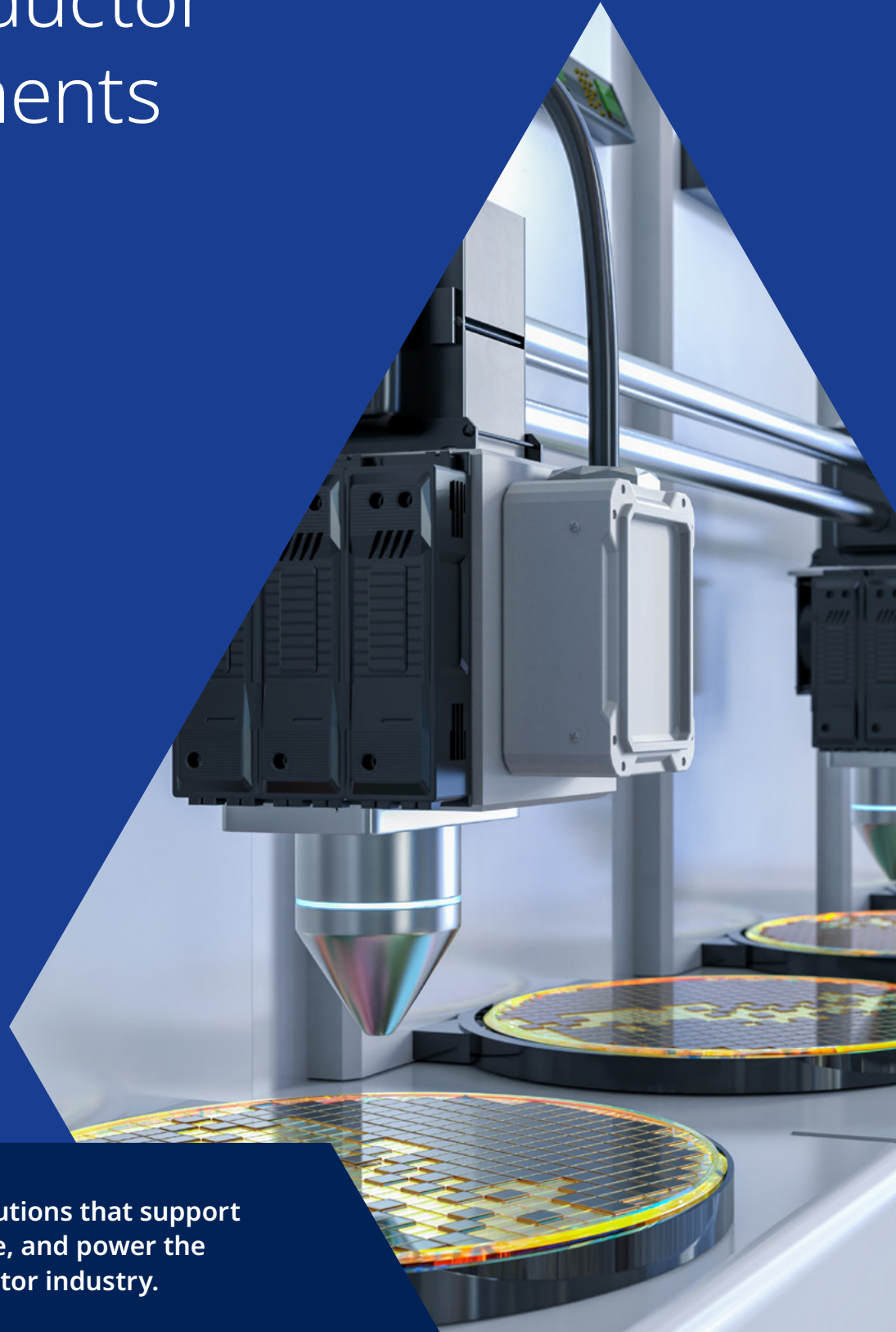




Solutions for Semiconductor Environments



Quickly find the right solutions that support growth, maximize uptime, and power the future of the semiconductor industry.

Connecting Innovation to Semiconductor Excellence

Infrastructure solutions engineered for a rapidly expanding semiconductor industry

The semiconductor market is experiencing unprecedented growth, fueled by powerful global megatrends. Artificial intelligence and high-performance computing are driving surging demand for specialized chips such as GPUs and NPUs, while tariffs and government incentives like the U.S. CHIPS Act are accelerating massive investments in North American manufacturing. As capacity expands and fabs scale faster than ever, semiconductor manufacturers and equipment builders face increasing pressure to prevent downtime, maximize productivity, improve capital and operational efficiency, and strengthen supply-chain resilience.

In this high-stakes environment, every detail of the infrastructure matters. Panduit supports chipmakers and equipment manufacturers with connectivity and infrastructure solutions designed to perform in the most demanding semiconductor environments. Our solutions enable equipment manufacturers to build with confidence and chipmakers to specify with certainty, helping ensure operations run reliably, safely, and efficiently from day one.

As technology advances, Panduit helps address critical challenges such as space constraints, uptime requirements, and global standards compliance. Together, we create the foundation that enables semiconductor innovation.

Key Highlights:



Space Optimization

Compact, efficient designs for equipment with tight tolerances



Safety and Reliability

Protect critical processes and personnel while reducing downtime



Productivity

Solutions that streamline operations and maximize performance



Standards Compliance

Engineered to meet global standards and enable advanced connectivity



Delivering Solutions for Today and Tomorrow

Infrastructure that supports uptime, scalability, and long-term performance

Semiconductor manufacturing is a race against complexity. Smaller nodes, faster process cycles, and zero tolerance for downtime place extraordinary demands on every system within the semiconductor fabrication facilities. To stay competitive, manufacturers must ensure infrastructure can scale quickly, operate continuously, and perform flawlessly across every stage of production.

Panduit delivers proven infrastructure solutions that help address these challenges across all types of semiconductor manufacturing equipment including wafer preparation, deposition, lithography, etching, test and inspection, and packaging. From space-optimized cable management to grounding and bonding systems, our solutions are designed to support reliability, productivity, and compliance.

When chipmakers define specifications and equipment manufacturers bring them to life, Panduit serves as a trusted partner to help reduce downtime, improve operational efficiency, and safeguard critical processes.

How Panduit Helps

- ▶ Supports continuous uptime for uninterrupted production
- ▶ Enables scalable, future-ready fab and tool designs
- ▶ Helps meet global standards and regulatory requirements
- ▶ Improves reliability while saving time and operational costs

This brochure explores Panduit semiconductor-focused product solutions in detail, showing how they help improve uptime, enhance safety, optimize space, and enable reliable connectivity.

It also highlights how Panduit goes beyond products, serving as a strategic partner through outstanding sales, service, and support, world-class quality and manufacturing, a resilient global supply chain, and regional production initiatives such as Build America, Buy America and the United States-Mexico-Canada Agreement (USMCA).

Together, Panduit helps semiconductor manufacturers and equipment builders meet today's demands while preparing for what comes next.

Semiconductor Environment Solutions

Cable Ties & Accessories

Cable ties and accessories provide secure, organized cable management that withstands demanding semiconductor environments, helping maintain uptime and simplify maintenance.

Cable Ties   

Engineered to withstand harsh semiconductor environments, these cable ties and tools provide dependable wire management while helping improve installation efficiency and operator safety.

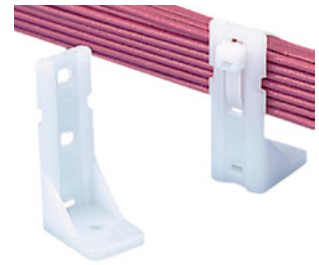
Part Number	Cable Tie Type	Cross Section	Length In. (mm)	Material	Resistance Properties	Color	Std. Pkg. Qty
BT3S-C0	Dome-Top Barb Ty	Standard	12 (305)	Weather Resistant Nylon 6.6	UV-, Weather-Resistant	Black	100
BT4S-M0			15.1 (384)				1000
PLT3I-M0	Premium Locking	Intermediate	11.4 (290)	Nylon 6.6	N/A	Natural	100
PLT4S-C0		Standard	14.5 (368)				100
PLT1.5M-M		Miniature	5.6 (142)	Nylon 6.6	N/A	Natural	1000
PLT2I-M		Intermediate	8 (203)				1000
PLT2S-C		Standard	7.4 (188)				100
PLT3S-C			11.5 (292)	100			
PLT1M-M76		Miniature	4 (102)	Tefzel	Chemical-, UV-, and Weather-Resistant	Aqua	1000
PLT2I-C76		Intermediate	8 (203)				100
PLT2S-M76		Standard	7.4 (188)				1000
PLT3S-C76			11.6 (295)	100			
PLT1M-C702Y	Miniature	4 (102)	Halar	Heat-, UV-, and Weather-Resistant	Maroon	1000	
PLT2S-M702Y	Standard	7.4 (188)				1000	
PLT3S-C702Y		11.6 (295)	1000				
PLT1M-C71	Miniature	4 (102)	PEEK	Chemical-, High Heat-, and Radiation-Resistant	Translucent Brown	100	
PLT1.5M-C71	Standard	5.9 (150)				1000	
PLT2S-M71		7.4 (188)				1000	



Non-Adhesive Cable Tie Mounts

Offer screw or push-mount options in specialty materials for harsh environments, providing versatile solutions when paired with compatible cable ties.

Part Number	Description	Std. Pkg. Qty.
PP2S-S10-C	The pan-post standoff is natural color and requires a #10 (M5) screw. It measures 1.06 in. L x .72 in. W x 4.60 in. H (26.9mm x 18.3mm x 116.9mm). It is used with miniature, intermediate, and standard cable ties	
TM2S8-C71	The cable tie mount in translucent brown color is applied with a #8 (M4) screw and is 0.43in. (10.9mm) wide. It is made of PEEK, which is ideal for high temperature and harsh chemical environments	
TM2S8-C76	The cable tie mount in aqua color is applied with a #8 (M4) screw and is 0.43 in. (10.9mm) wide. It is made of Tefzel, which is ideal for applications requiring resistance to environmental stresses such as chemical attack, gamma radiation, ultraviolet radiation and extreme high and low temperatures	100 pcs.
TM3S10-C	The cable tie mount in natural color is applied with a #10 (M5) screw and is 0.61 in. (15.5mm) wide. It is made of nylon 6.6, which increases mechanical strength, heat and wear resistance, and stiffness in indoor environments	
TMEH-S25-Q0	The extra heavy cable tie mount in black is applied with a 1/4 in. (M6) screw.	25 pcs.



PP2S-S10-C



TM2S8-C71



TM2S8-C76

4-Way Adhesive Backed Cable Tie Mounts

Securely hold wires and cables where drilling isn't possible, with rubber or high-bond adhesive options for reliable performance in static or dynamic applications.

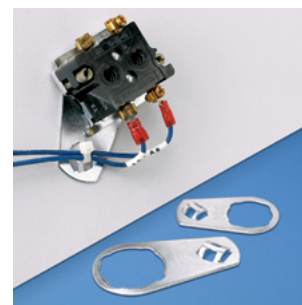
Part Number	Description	Std. Pkg. Qty.
ABM100-AV-C	1 in. x 1 in. (25.4mm x 25.4mm); High bond adhesive (twice the static load of ABM100-A); Fits Miniature, Intermediate and Standard cables ties; Nylon 6.6, Natural	
ABM112-A-C	1.12 in. x 1.12 in. (28.5mm x 28.5mm); Rubber-based adhesive; Fits Miniature, Intermediate and Standard cables ties; Nylon 6.6, Natural	
ABM112-AV-C	1.12 in. x 1.12 in. (28.5mm x 28.5mm); High bond adhesive (twice the static load of ABM112-A); Fits Miniature, Intermediate and Standard cables ties; Nylon 6.6, Natural	100 pcs.
ABMM-AV-C	0.75 in. x 0.75 in. (19.1mm x 19.1mm); High bond adhesive (twice the static load of ABMM-A); Fits Miniature and Intermediate Cable Ties; ABS, Natural	
ABM2S-A-C	1 in. x 1 in. (25.4mm x 25.4mm); Rubber-based adhesive; Fits Miniature, Intermediate and Standard cables ties; ABS, Natural	



Control Panel Mounts

Intended for installation without adhesive behind a control panel switch and provide a way to secure the terminated cables with a cable tie to maintain a reliable connection.

Part Number	Description	Std. Pkg. Qty.
CPM87S-C	0.89 in. (22.6mm) hole, material zinc plated steel, used with Miniature, Intermediate and Standard cable ties.	100 pcs.
CPM122S-C	1.22 in. (31.0mm) hole, material zinc plated steel, used with Miniature, Intermediate, and Standard cable ties.	



Power and Grounding

Power and grounding solutions provide dependable electrical continuity for semiconductor equipment operating in space-constrained, high-precision environments. Designed to support safety, standards compliance, and reliable uptime, they help protect sensitive tools and processes from electrical disturbances.

Narrow Tongue Lugs



Narrow tongue lugs enable secure, high-reliability terminations in tight panel spaces common to semiconductor equipment, helping support safe operation and continuous uptime.

Part Number	Description	Std. Pkg. Qty.
LCAN1-14-E	Copper compression lug, 1 hole, standard barrel with window, 1 AWG, narrow tongue, 1/4 in. (6.4mm) stud	20 pcs.
LCAN3/0-38-X	Copper compression lug, 1 hole, standard barrel with window, 3/0 AWG, narrow tongue, 3/8 in. (9.5mm) stud	10 pcs.
LCAN500-38-6	Copper compression lug, 1 hole, standard barrel with window, 500 kcmil, narrow tongue, 3/8 in. (9.5mm) stud	6 pcs.
LCAXN350-12-6	Copper compression lug, 1 hole, standard barrel with window, 350 kcmil, narrow tongue, 1/2 in. (12.7mm) stud, can be used for flex cable	
LCAXN4/0-38-X	Copper compression lug, 1 hole, standard barrel with window, 4/0 gauge, narrow tongue, 3/8 in. (9.5mm) stud, can be used for flex cable	10 pcs.
LCAXN350-38-6	Copper compression lug, 1 hole, standard barrel with window, narrow tongue, 3/8 in. (9.5mm) stud, can be used for flex cable	6 pcs.
LCDXN750-38D-3	Copper compression lug, 2 hole, standard barrel with window, narrow tongue, 3/8 in. (9.5mm) stud, can be used for flex cable	3 pcs.
LCDXN2-14A-E	Copper compression lug, 2 hole, standard barrel with window, narrow tongue, 1/4 in. (6.4mm) stud, can be used for flex cable	20 pcs.



LCAN1-14-E



LCDXN2-14A-E

Standard Tongue Lugs

Standard tongue lugs provide reliable, high-conductivity terminations for power and grounding connections in semiconductor equipment.

Part Number	Description	Std. Pkg. Qty.
LCA2-14-Q	Copper compression lug, 1 hole, standard barrel with window, 2 AWG, standard tongue, 1/4 in. (6.4mm) stud	25 pcs.
LCAX1/0-12-X	Copper compression lug, 1 hole, standard barrel with window, 1/0 AWG, Flex cable, standard tongue, 1/2 in. (12.7mm) stud	10 pcs.
LCAX4-10-L	Copper compression lug, 1 hole, standard barrel with window, 4 AWG, Flex cable, standard tongue, #10 (4.8mm) stud	50 pcs.
LCCX2-14A-E	Copper compression lug, 2 hole, long barrel with window, 2 AWG, Flex cable, standard tongue, two 1/4 in. (6.4mm) studs	20 pcs.
LCCX4/0-38D-X	Copper compression lug, 2 hole, long barrel with window, 4/0 AWG, Flex cable, standard tongue, two 3/8 in. (9.5mm) studs	10 pcs.



LCA2-14-Q

Ground Lugs

Ground lugs ensure secure, low-resistance grounding connections that support safety, compliance, and uptime in semiconductor environments.

Part Number	Description	Std. Pkg. Qty.
LCA10-10F-L	Copper compression lug, 1 hole, standard barrel with window, 90 degree angle, 10 AWG, standard tongue, #10 in. (4.8mm) stud	50 pcs.
LCC6-14A-L	Copper compression lug, 2 hole, long barrel with window, 6 AWG, standard tongue, 1/4 in. (6.4mm) stud	50 pcs.
LCD10-10A-L	Copper compression lug, 2 hole, standard barrel, 10 AWG, standard tongue, #10 in. (4.8mm) stud	50 pcs.
LCD6-14AF-L	Copper compression lug, 2 hole, standard barrel, 90 degree angle, 6 AWG, standard tongue, 1/4 in. (6.4mm) stud	50 pcs.



LCC6-14A-L

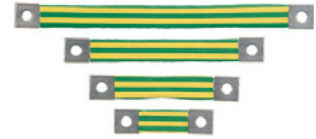


LCD10-10A-L

StructuredGround™ Flat Braided Bonding Straps

Bonding straps provide low-impedance grounding paths that help protect sensitive semiconductor equipment from electrical faults while supporting safety, compliance, and reliable operation.

Part Number	Description	Std. Pkg. Qty.
BS100445	One-hole, insulated, 4.00 in. L x 1.06 in. W (101.6mm x 27.0mm)	1 pc.
BS100645	One-hole, insulated, 6.00 in. L x 1.06 in. W (152.4mm x 27.0mm)	
BS100845	One-hole, insulated, 8.00 in. L x 1.06 in. W (203.2mm x 27.0mm)	
BS101245	One-hole, insulated, 12.00 in. L x 1.06 in. W (304.8mm x 27.0mm)	
BS100645U	One-hole, non-insulated, 6.00 in. L x 1.06 in. W (152.4mm x 27.0mm)	
BS100845U	One-hole, non-insulated, 8.00 in. L x 1.06 in. W (203.2mm x 27.0mm)	
BS101245U	One-hole, non-insulated, 12.00 in. L x 1.06 in. W (304.8mm x 27.0mm)	



Insulated



Non-Insulated

StructuredGround™ Universal Ground Bar System

Simplify your panel wiring and ensure electrical safety with our universal ground bar, accommodating various wire sizes and offering flexible mounting options for any control panel or enclosure.

Part Number	Description	Std. Pkg. Qty.
UGB2/0-414-6	Universal ground bar accepts #14 – 4 AWG wire in 6 wire ports; add up to a 2/0 AWG main equipment grounding conductor with a compression or mechanical connector; 4.92 in. L x 0.62 in. W x 0.48 in. H (125mm x 15.7mm x 12.2mm)	1 pc.
UGB2/0-414-12	Universal ground bar accepts #14 – 4 AWG wire in 12 wire ports; add up to a 2/0 AWG main equipment grounding conductor with a compression or mechanical connector; 8.28 in. L x 0.62 in. W x 0.48 in. H (210.3mm x 15.7mm x 12.2mm)	
UGB2/0-414-18	Universal ground bar accepts #14 – 4 AWG wire in 18 wire ports; add up to a 2/0 AWG main equipment grounding conductor with a compression or mechanical connector; 11.64 in. L x 0.62 in. W x 0.48 in. H (295.7mm x 15.7mm x 12.2mm)	
UGB-IN-SO	Universal ground bar isolation stand-offs; includes two stand-offs and hardware; 1.57 in. L x 0.59 in. W x 0.98 in. H (40mm x 15.0mm x 25.0mm)	
UGB-B-SO	Universal ground bar bonding stand-offs; includes two tin-plated copper stand-offs and hardware; 2.34 in. L x 0.63 in. W x 0.75 in. H (59.3mm x 15.9mm x 19.1mm)	



UGB2/0-414-6



UGB-IN-SO

Terminals, Disconnects, and Ferrules

Terminals, ferrules, and disconnects deliver secure, vibration-resistant connections that maintain signal integrity in semiconductor tools. These solutions help prevent downtime by ensuring consistent performance and easy installation in demanding manufacturing environments.

Terminals/Disconnects

Terminals and disconnects provide secure, reliable electrical connections that maintain signal integrity and support uptime in demanding semiconductor environments.

Part Number	Description	Std. Pkg. Qty.
PN10-10R-D	Ring terminal; 12 – 10 AWG; stud size #10 nylon insulated	500 pcs.
PN14-10R-M	Ring terminal; 18 – 14 AWG; stud size #10 nylon insulated	1000 pcs.
PV10-10R-L	Ring terminal; 12 - 10 AWG, stud size #10, vinyl insulated, funnel entry	50 pcs.
PV10-14R-L	Ring terminal; 12 – 10 AWG; stud size 1/4 in., vinyl insulated, funnel entry	50 pcs.
PV14-10R-M	Ring terminal; 16 – 14 AWG; stud size #10, vinyl insulated, funnel entry	1000 pcs.
DNF14-250FIB-C	Female disconnect; 16 – 14 AWG, 0.250 x 0.032 tab size, nylon fully insulated, funnel entry	100 pcs.
DNF14-250FIB-M	Female disconnect; 16 – 14 AWG, 0.250 x 0.032 tab size, nylon fully insulated, funnel entry	1000 pcs.
DNF18-250FIB-M	Female disconnect; 22 – 18 AWG, 0.250 x 0.032 tab size, nylon fully insulated, funnel entry	1000 pcs.



PN10-10R-D



DNF14-250FIB-C

Ferrules  

Ferrules provide secure wire termination that improves conductivity and prevents strand fraying, ensuring reliable connections in semiconductor equipment.

Part Number	Description	Std. Pkg. Qty.
FSD75-8-D	Single wire DIN end sleeve covered ferrule; white funnel entry; 20 AWG (0.5mm ²); 0.53 in. (13.5mm) pin length	500 pcs.
FSD76-8-D	Single wire DIN end sleeve covered ferrule; gray funnel entry; 18 AWG (0.75mm ²); 0.55 in. (14 mm) pin length	
FSD77-8-D	Single wire DIN end sleeve insulated ferrule; red funnel entry; 1.0mm ² ; 0.57 in. (14.5mm) pin length	
FSD78-8-D	Single wire DIN end sleeve covered ferrule; black funnel entry; 16 AWG (1.5mm ²); 0.57 in. (14.5mm) length	
FSD78-10-D	Polypropylene covered ferrules single wire black DIN end sleeve, 16 AWG (1.5mm ²), 0.39 in. (10.0mm) pin length	
FSD80-8-D	Single wire DIN end sleeve covered ferrule; blue funnel entry; 14 AWG (2.5mm ²); 0.59 in. (15mm) pin length	
FSD80-12-D	Single wire DIN end sleeve covered ferrule; blue funnel entry; 14 AWG (2.5mm ²); 0.75 in. (19.0mm) length	
FSD81-10-D	Single wire DIN end sleeve covered ferrule; gray funnel entry; 12 AWG (4mm ²); 0.69 in. (17.5mm) length	
FTD80-10-TL	Twin wire DIN end sleeve covered ferrule; Blue funnel entry, 14 AWG (2.5mm ²); 0.39 in. (10mm) pin length	250 pcs.



Ethernet Connectivity

Ethernet connectivity solutions deliver high-speed, reliable data transmission for semiconductor automation systems. Rated to 600 V for harsh-environment applications, they can be installed in the same panel as high-voltage power to support real-time communication and scalable manufacturing systems.

IndustrialNet™ 600 V Copper Patch Cords

Copper patch cords provide flexible, high-speed connections for semiconductor networks, supporting efficient data flow and uptime in critical operations.

Part Number	Description	Length* m	Color	Std. Pkg Qty.
ISTPH6X*MTL	Category 6A shielded, 600 V, 26 AWG SF/UTP, patch cord, TPE jacket	0.6, 1-5, 7, 10	Teal	1
ISTPHCH*MTL	Category 5e shielded, 600 V, 24 AWG SF/UTP, patch cord, TPE jacket			

Replace * with 0.6, 1, 2, 3, 4, 5, 7, or 10 for length



ETHERNET/IP Category 6A/Category 7 Copper Cable

Copper cable delivers high-performance electrical transmission for semiconductor equipment, ensuring reliable connectivity and minimal signal loss in demanding environments.

Part Number	Description	Std. Pkg. Qty.
ISFCH6X04ATL-UG	Industrial, 600 V, 4-pair, 24/7 AWG Stranded, SF/UTP, CMR, Oil Res., UV Res., Teal, 1000 ft. Reel	1000 ft./ 305m reel



DIN Rail Mount Patching/Adapters

DIN rail mount patching and adapters offer organized, space-saving connectivity solutions for control panels, simplifying maintenance and supporting scalability in semiconductor fabs.

Part Number	Description	Std. Pkg. Qty.
-------------	-------------	----------------

INDUSTRIALNET DIN RAIL MOUNT PATCHING SOLUTIONS

CDPP8RG	8-port copper patch panel, DIN rail mount; includes screws to attach faceplate, Ultimate ID® Labels and Clear Covers; can also mount to other surfaces using mounting holes in latches	1
CDPP8RG-S	IndustrialNet, 8-port DIN Rail mount Shielded Patch Panel. Includes Ultimate ID labels and label covers	
FDPPSIG	Fiber optic patch panel for terminated distribution style cabling; mounts to standard DIN rail and locks in place with adjustable latches; includes a PG21 cable entry gland with two inserts for use with a range of fiber cables. For use with FAPS.	
FDPPEIG	Fiber optic extended depth patch panel for terminated distribution style cabling; mounts to standard DIN rail and locks in place with adjustable latches; includes a PG21 cable entry gland with two inserts for use with a range of fiber cables. For use with FAPS and Opticom Cassettes.	



CDPP8RG

MINI-COM DIN RAIL MOUNT ADAPTERS

CADIN1IG	Mini-Com DIN Rail Mount Adapter mounts to standard 35mm DIN rail and accepts any single port Mini-Com Module, International Gray	1
CADIN1IG-S	Mini-Com DIN Shielded Rail Mount Adapter mounts to standard 35mm DIN rail and accepts any single port Mini-Com Module, International Gray. Includes a label and label cover	



CADIN1IG

Identification

Identification solutions deliver clear, durable labeling that improves traceability, accuracy, and efficiency across complex semiconductor environments.

Thermal Transfer Self-Laminating Labels

Includes a colored print-on area and clear over-laminate to protect the legend for clear and durable identification.

Part Number	Description	Std. Pkg Qty.
S100X150VATY	Vinyl, 1.00 in. W x 1.50 in. H, 0.5 in. POA, Clear/White, 3 in. Core, 10-6 AWG wire/cable	5000 pcs.
S100X225VATY	Vinyl, 1.00 in. W x 2.25 in. H, 0.75 in. POA, Clear/White, 3 in. Core, 8 – 4 AWG wire/cable	5000 pcs.
S100X400VATY	Vinyl, 1.00 in. W x 4.00 in. H, 1.00 in. POA, Clear/White, 3 in. Core, 2 – 1 AWG wire/cable	2500 pcs.
S100X650VATY	Vinyl, 1.00 in. W x 6.50 in. H, 1.50 in. POA, Clear/White, 3 in. Core, 1/0 – 250 MCM wire/cable	1000 pcs.
S100X225TAT-A	PVF Tedlar®, 1.00 in. W x 2.25 in. H, 0.75 in. POA, Clear/White, 3 in. Core, 8 – 4 AWG wire/cable	1500 pcs.

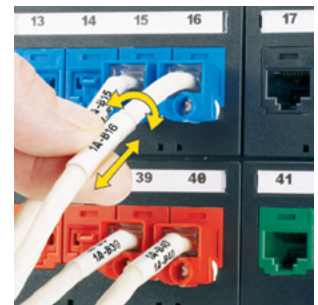
Tedlar is a registered trademark of E.I. du Pont de Nemours and Company



Thermal Transfer Turn-Tell® Labels

Innovative label design allows labels to rotate for visibility from any angle, and for repositioning on the wire/cable to align legends and improve aesthetics.

Part Number	Description	Std. Pkg Qty.
R100X075V1T	Vinyl, 1.00 in. W x 0.75 in. H, 0.25 in. POA, Clear/White, 3 in. Core, 18 – 14 AWG wire/cable	2500 pcs.
R100X125V1T	Vinyl, 1.00 in. W x 1.25 in. H, 0.38 in. POA, Clear/White, 3 in. Core, 12 – 10 AWG wire/cable	
R100X150V1T	Vinyl, 1.00 in. W x 1.50 in. H, 0.50 in. POA, Clear/White, 3 in. Core, Category 5e wire/cable	
R100X225V1T	Vinyl, 1.00 in. W x 2.25 in. H, 0.75 in. POA, Clear/White, 3 in. Core, Category 6 wire/cable	
R100X400V1T	Vinyl, 1.00 in. W x 4.00 in. H, 1.00 in. POA, Clear/White, 3 in. Core, 2 – 1 AWG wire/cable	1000 pcs.



Military Grade Two-Sided Heat Shrink Labels

Permanent, one-piece, heat shrink sleeve designed to provide clear, durable identification of wires and cables.

Part Number	Description	Wire Range (AWG)	Std. Pkg. Qty.
H200X025H1T-2	White, 1/8 in. (3.1 mm) diameter polyolefin. 500 labels per roll	22 – 18	1 Roll
H200X034H1T-2	White, 3/16 in. (4.7mm) diameter polyolefin. 500 labels per roll	18 – 12	
H200X044H1T-2	White, 1/4 in. (6.3 mm) diameter polyolefin. 500 labels per roll	16 – 10	
H200X064H1T-2	White, 3/8 in. (9.7mm) diameter polyolefin. 500 labels per roll	12 – 6	
H200X084H1T-2	White, 1/2 in. (12.7mm) diameter polyolefin. 500 labels per roll	8 – 1	



Arc Flash Super-Tack Polyester Labels IP69K

Arc flash labeling solutions are designed to comply with the latest regulations including the latest NFPA 70E Standard.

Part Number	Description	Std. Pkg Qty.
C400X600A51	Die cut arc flash warning label, 4.00 in. x 6.00 in. (101.6mm x 152.4mm), warning header, polyester adhesive, Orange header and Black/White, 100 labels per roll	1 Roll
C400X600Y81	Die-cut safety label, 4.00 in. x 6.00 in. (101.6mm x 152.4mm), polyester adhesive, Yellow, 100 labels per roll	
C400X600YZ1	Die-cut arc flash danger label, 4.00 in. x 6.00 in. (101.6mm x 152.4mm), polyester adhesive, Red/White danger header, 100 labels per roll	



C400X600A51



C400X600YZ1

Thermal Transfer Raised Panel Labels IP69K

Raised thermal transfer printable surface with high-tack adhesive for strong holding power on rough, textured, painted, and powder coated surface areas.

Part Number	Description	Std. Pkg Qty.
C120X190APT-22	Push button label, 1.20 in. W x 1.90 in. H, 22mm hole, White	500 pcs.
C180X180APT-30	Push button label, 1.80 in. W x 1.80 in. H, 30mm hole, White	
C200X100APT	Component label, 2.00 in. W x 1.00 in. H, White	

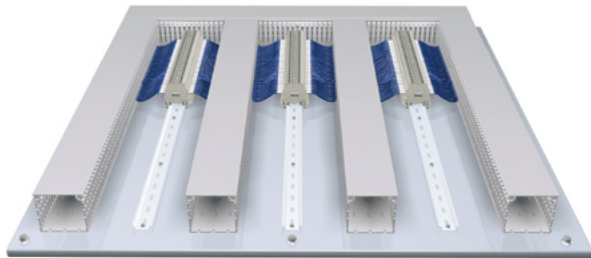


Wiring Duct

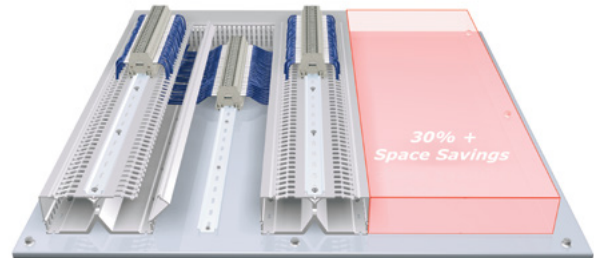
Wiring duct solutions support organized, space-efficient cable routing within semiconductor equipment and control panels, helping simplify maintenance while supporting uptime and scalability.

PanelMax™ DIN Rail Wiring Duct

Panduit DIN Rail Duct organizes wiring in control panels for semiconductor equipment, maximizing space efficiency and simplifying maintenance. Its design supports rapid scaling and uptime in high-volume fabs.

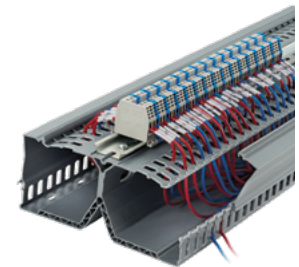


Conventional wiring duct panel layout



DIN rail wiring duct panel layout with 30%+ space savings

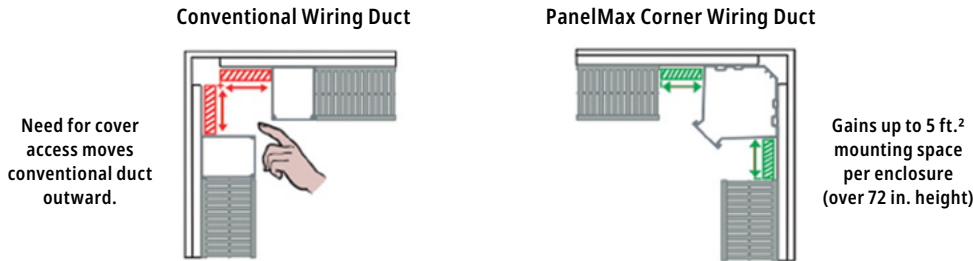
Part Number	Description	Std. Pkg. Qty.
DRD22LG6	2 in. height with dual wiring channels. Base, covers, and DIN rail fasteners included.	6 ft.
DRD33LG6	3 in. height with dual wiring channels. Base, covers, and DIN rail fasteners included.	
DRD44LG6	4 in. height with dual wiring channels. Base, covers, and DIN rail fasteners included.	
DRDWR2-X	2 in. wire retainer for PanelMax DIN Rail Wiring Duct, Black.	10 pcs.
DRDWR3-X	3 in. wire retainer for PanelMax DIN Rail Wiring Duct, Black.	
DRDWR4-X	4 in. wire retainer for PanelMax DIN Rail Wiring Duct, Black.	



DIN Rail not included. Part numbers shown in LG (Light Gray); also available in WH (White)

PanelMax™ Corner Wiring Duct    

PanelMax Corner Wiring Duct is used in the vertical corners of medium to large electrical control panels to route, conceal, and protect electrical wiring. Reclaims up to 20% panel space by utilizing the previously unusable corner space, and improves aesthetics by providing a clean transition of wiring from the back panel to the side panels.



Part Number	Description	W x H In. (mm)	Cover Part Number	Std. Pkg. Qty.
CWD2LG6	One-piece for use with 2 in. height wiring duct. Cover sold separately.	3.35 x 2.57 (85.0 x 65.3)	C2LG6	6 ft.
CWD3LG6	One-piece for use with 3 in. height wiring duct. Cover sold separately.	4.40 x 3.57 (111.8 x 90.7)	C2LG6	6 ft.
CWD4LG6	One-piece for use with 4 in. height wiring duct. Cover sold separately.	5.33 x 4.58 (135.3 x 115.7)	C2LG6	6 ft.

Part numbers shown in LG (Light Gray); also available in WH (White).



PanelMax™ Shielded Wiring Duct and Noise Shield    

Panduit noise shielding solution is designed to reduce the effects of EMI/RFI (electromagnetic interference, radio frequency interference) and provide space optimization within industrial control panels. The shielding provides up to 20dB reduction in noise, or 90% noise voltage reduction (NVR), which is equivalent to 6 inches of air spacing, generating valuable panel space savings of 40% or more.

Part Number	Description	Std. Pkg. Qty.
G2X2LG6EMI	2 in. x 2 in. PanelMax Shielded Wiring Duct; 6' length. Foil metal finish includes anti-oxidizing paste. Cover (C2LG6) sold separately	24 ft.
G2X3LG6EMI	2 in. x 3 in. PanelMax Shielded Wiring Duct; 6' length. Foil metal finish includes anti-oxidizing paste. Cover (C2LG6) sold separately	
G2X4LG6EMI	2 in. x 4 in. PanelMax Shielded Wiring Duct; 6' length. Foil metal finish includes anti-oxidizing paste. Cover (C2LG6) sold separately	
SD2EMI	EMI noise shield kit for 2 in. height Panduit wiring duct; two 3' sections, bonding clips, and anti-oxidizing paste	5 pcs.
SD3EMI	EMI noise shield kit for 3 in. height Panduit wiring duct; two 3' sections, bonding clips, and anti-oxidizing paste	
SD4EMI	EMI noise shield kit for 4 in. height Panduit wiring duct; two 3' sections, bonding clips, and anti-oxidizing paste	
SDCLIP	Noise shield replacement bonding clips – 2 clips	10 pcs.

Part numbers shown in LG (Light Gray); also available in WH (White).



Shielded Wiring Duct



Noise Shield Kit

Type F Narrow Slot Wiring Duct   

Narrow slot/finger design provides more slots to fit the spacing of high-density terminal blocks and other hardware. Cover sold separately.

Part Number	Duct Size (W x H) In. (mm)	Slot Width In. (mm)	Cover Part Number	Base Ctn. Qty.	Cover Ctn. Qty.
F1X3LG6	1.25 x 3.13 (32.0 x 79.4)	0.20 (5.0)	C1LG6	120 ft.	120 ft.
F1X4LG6	1.25 x 4.10 (32.0 x 104.1)			60 ft.	
F1.5X3LG6	1.75 x 3.12 (44.5 x 79.2)		C1.5LG6	120 ft.	
F1.5X4LG6	1.75 x 4.10 (44.5 x 104.1)			60 ft.	
F2X3LG6	2.25 x 3.14 (57.2 x 79.8)		C2LG6	60 ft.	
F2X4LG6	2.25 X 4.10 (57.2 X 104.1)				
F3X4LG6	3.25 X 4.10 (82.6 X 104.1)				



Type G Wide Slot Wiring Duct    

Wide slot/finger design provides greater sidewall rigidity and can be used with a wide range of wire bundle sizes. Cover sold separately.

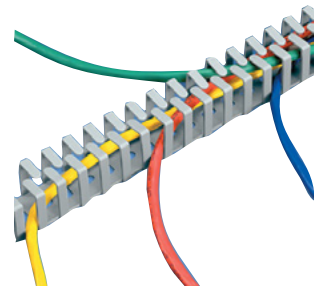
Part Number	Duct Size (W x H) In. (mm)	Slot Width In. (mm)	Cover Part Number	Base Ctn. Qty.	Cover Ctn. Qty.
G1X3LG6	1.25 x 3.12 (32.0 x 79.2)	0.31 (7.9)	C1LG6	120 ft.	120 ft.
G1.5X3LG6	1.75 x 3.12 (44.5 x 79.2)		C1.5LG6		
G2X3LG6	2.25 x 3.12 (57.2 x 79.2)		C2LG6	60 ft.	
G2X4LG6	2.25 x 4.10 (57.2 X 104.1)				



Flexible Wiring Duct  

Flexible Wiring Duct is a one-piece, open finger design meant to route/protect wires and easily add/remove wires after termination without special tooling. The factory-applied high bond acrylic adhesive option is provided for easy positioning and for use on control panel doors and areas where other mounting options are not possible.

Part Number	Duct Size (W x H x L) In. (mm)	Std. Pkg. Qty.
FL12X12LG-AV	0.49 x 0.49 x 19.7 (12.5 x 12.5 x 500)	112 pcs.
FL25X25LG-AV	0.98 x 0.98 x 19.7 (25.0 x 25.0 x 500)	70 pcs.
FL50X50LG-AV	1.97 x 1.97 x 19.7 (50.0 x 50.0 x 500)	32 pcs.



Hinged Cover Wiring Duct

Hinged cover wiring duct is specially designed to accept hinged covers, which differ from regular covers by remaining attached to either side of the duct even when opened. By opening as wide as 100 degrees, it allows for easy access during maintenance and repair operations, as well as minimizes lost covers. Time and cost savings can be as much as 20% respectively.

Part Number	Duct Size (W x H)* In. (mm)	Slot Width In. (mm)	Cover Part Number	Base Ctn. Qty.	Cover Ctn. Qty.
H1.5X3LG6	1.75 x 3.06 (44.5 x 77.7)	0.31 (7.9)	HC1.5LG6	120 ft.	120 ft.
H2X4LG6	2.17 x 4.10 (55.1 x 104.1)		HC2LG6	60 ft.	
H2X3LG6	2.17 x 3.06 (55.1 x 77.7)				
H3X4LG6	3.25 x 4.10 (82.6 x 104.1)		HC3LG6		

*Wide Slot Sizes shown, also available in Narrow Slot (Type HN) and Solid Wall (Type HS) options.
Part Number shown for LG (Light Gray). Available in BL (Black) and WH (White).
Base and cover sold separately.



Abrasion Protection

Abrasion protection products safeguard cables and wire bundles from wear, movement, and environmental stress, helping extend system life and reduce unplanned downtime.

Spiral Wrap

Spiral wrap products provide abrasion protection for wire, cable, hoses, and tubing. The spiral wrap harnesses multiple cables into a single manageable bundle and allows for breakouts of single/multiple cables.

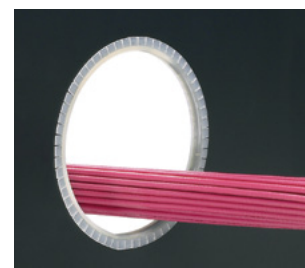
Part Number	Description	Std. Pkg. Qty.
T25F-C	0.25 in. (6.3mm) x 100 ft., polyethylene, natural, 100 feet per roll	1 Roll
T25T-L	0.25 in. (6.4mm) x 50 ft., TFE, natural, 50 feet per roll	
T38F-C	0.38 in. (9.7mm) x 100 ft., polyethylene, natural, 100 feet per roll	
T50F-C	0.50 in. (12.7mm) x 100 ft., polyethylene, natural, 100 feet per roll	
T50FR-C20Y	0.50 in. (12.7mm) x 100 ft., flame retardant polyethylene, black, 100 feet per roll	



Adhesive Lined Grommet Edging

Slotted grommet edging protects and prevents wires and cables from chafing against sharp edges of panel walls and knockouts for irregularly shaped and round panel holes.

Part Number	Description	Std. Pkg. Qty.
GEE62F-A-C	0.036 in. – 0.062 in. panel thickness, polyethylene, natural, 100 feet per roll	1 Roll
GEE99F-A-C	0.062 in. – 0.099 in. panel thickness, polyethylene, natural, 100 feet per roll	
GEE144F-A-C	0.099 in. – 0.144 in. panel thickness, polyethylene, natural, 100 feet per roll	



Corrugated Loom Tubing

Corrugated loom tubing offers a flexible, cost-effective way to protect cables from abrasion and light impact, with a slit for easy installation and suitability for indoor use only.

Part Number	Description	Std. Pkg. Qty.
CLT25F-C20	0.25 in. (6.4mm) x 100 ft. (30.5m), black, polyethylene	1 Roll
CLT50F-C20	0.50 in. (12.7mm) x 100 ft. (30.5m), black, polyethylene	
CLT75F-C20	0.75 in. (19.1mm) x 100 ft. (30.5m), black, polyethylene	
CLT100F-C20	1 in. (25.4mm) x 100 ft. (30.5m), black, polyethylene	



Pan-Wrap™ Split Harness Wrap

Pan-Wrap Split Harness Wrap provides flexible, durable abrasion protection with easy cable breakouts and a patented slot design for dynamic applications

Part Number	Description	Std. Pkg. Qty.
PW50F-T20	0.50 in. (12.7mm), 200 ft. (61m) per reel, polyethylene, black	1 Reel
PW50FR-T20Y	0.50 in. (12.7mm), 200 ft. (61m) per reel, flame retardant polyethylene, black	
PW75F-C20	0.75 in. (19.1mm), 100 ft. (30.5m) per reel, polyethylene, black	
PW75FR-C20Y	0.75 in. (19.1mm), 100 ft. (30.5m) per reel, flame retardant polyethylene, black	
PW100FR-C20Y	1 in. (25.4mm), 100 ft. (30.5m) per reel, flame retardant polyethylene, black	
PW150FR-L20Y	1.5 in. (38.1mm), 50 ft. (15m) per reel, flame retardant polyethylene, black	



Braided Sleeving

Braided sleeving offers flexible, expandable protection against abrasion and wear, ideal for bundling cables in dynamic semiconductor environments.

Part Number	Description	Std. Pkg. Qty.
SE50P-DR0	Braided Sleeving, PET material, 0.50 in. (12.7mm), 500 ft. (152.4m) per reel, black	1 Reel
SE75PFR-DR0	Braided Sleeving, Flame Retardant PET material, 0.75 in. (19.1mm), 100 ft. (30.5m) per reel, black	
SE50PS-CLR0	Pan-Wrap Split Braided Sleeving, PET material, 0.50 in. (12.7mm), 150 ft. (45.7m) per reel, black	
SE75PS-CR0	Pan-Wrap Split Braided Sleeving, PET material, 0.75 in. (19.1mm), 100 ft. (30.5m) per reel, black	
SE100PS-CR0	Pan-Wrap Split Braided Sleeving, PET material, 1.00 in. (25.4mm), 100 ft. (30.5m) per reel, black	



Thin Wall Heat Shrink Tubing

Heat shrink tubing provides a secure, insulating seal that protects and organizes wires while enhancing durability in semiconductor applications.

Part Number	Description	Std. Pkg. Qty.
HSTT38-C	0.38 in. (9.5mm) nominal diameter, 100 ft. (30.5m) length, black	1 Reel
HSTT50-C	0.50 in. (12.7mm) nominal diameter, 100 ft. (30.5m) length, black	
HSTT50-CC	0.50 in. (12.7mm) nominal diameter, 100 ft. (30.5m) length, clear	
HSTT75-C	0.75 in. (19.1mm) nominal diameter, 100 ft. (30.5m) length, black	
HSTT100-C	1.00 in. (25.4mm) nominal diameter, 100 ft. (30.5m) length, black	
HSTT100-CC	1.00 in. (25.4mm) nominal diameter, 100 ft. (30.5m) length, clear	
HSTT150-C	1.50 in. (38.1mm) nominal diameter, 100 ft. (30.5m) length, black	



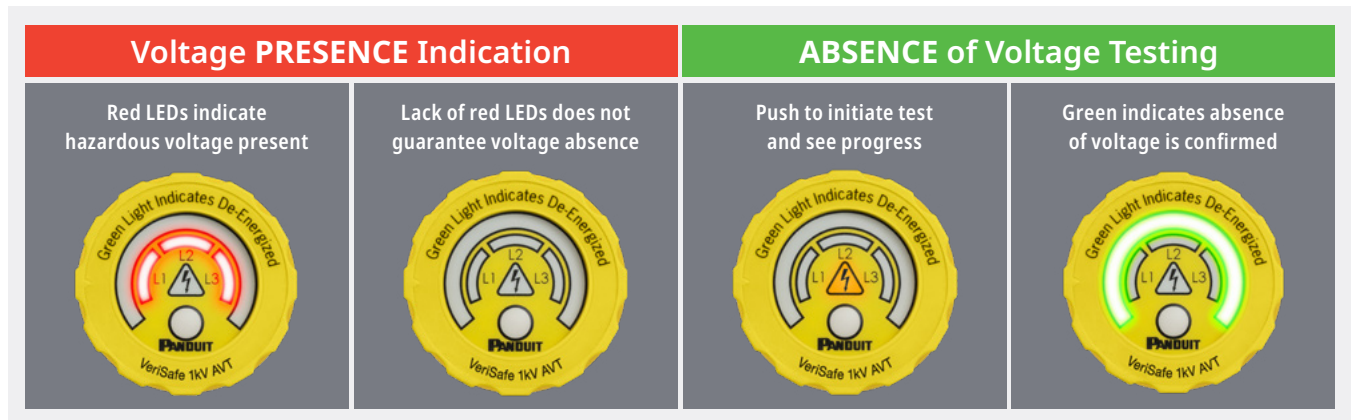
Safety

Safety solutions help protect personnel and equipment by supporting electrical safety, compliance, and risk reduction in high-performance semiconductor facilities.



VeriSafe™ Absence of Voltage Tester

The VeriSafe Absence of Voltage Tester simplifies the voltage testing process. With the push of a button, workers can quickly determine voltage status and see an active indication when the absence of voltage is confirmed. This provides a way to safely, reliably, and efficiently test for the absence of voltage without exposure to electrical hazards in just ten seconds.



Part Number	Description
VS-AVT-C02-L03	VeriSafe 600V Absence of Voltage Tester with 2 ft. system cable, 3 ft. sensor leads
VS-AVT-C08-L10	VeriSafe 600V Absence of Voltage Tester with 8 ft. system cable, 10 ft. sensor leads
VS2-AVT-1PB-XY*	Single-phase VeriSafe 1kV AVT isolation module, 10 ft. (3m) sensor leads, single-phase battery-powered indicator module and an industrial lithium battery
VS2-AVT-1PF-XY*	Single-phase VeriSafe 1kV AVT isolation module, 10 ft. (3m) sensor leads and a single-phase battery-free indicator module
VS2-AVT-3PB-XY*	Three-phase VeriSafe 1kV AVT isolation module, 10 ft. (3m) sensor leads, single-phase battery-powered indicator module and an industrial lithium battery
VS2-AVT-3PF-XY*	Three-phase VeriSafe 1kV AVT isolation module, 10 ft. (3m) sensor leads and a single-phase battery-free indicator module
ACCESSORIES	
VS2-NET	VeriSafe 1kV Network Module, Compatible with VeriSafe 1kV AVT
VERISAFE™ INSULATION PIERCING CONNECTORS	
VS-CKP14-6	VeriSafe Insulation Piercing Connection Kit for Tapping 14 to 6 AWG conductors. Kit includes 3 connectors for installment of 1 AVT



VS2-AVT-1PF-XY*



VS2-AVT-1PB-XY*



VS2-NET



VS-CKP14-6

*Replace XY with 02 for 2 ft. (0.6m) system cable, 08 for 8 ft. (2.4m) system cable, 16 for 16 ft. (4.8m) system cable.

Data Access Port Rated Type (UL, CSA, NEMA) 4, 4X, and 12, IP65, IP66



Data Access Ports give personnel the ability to access VFDs, PLCs and other network equipment without opening the panel, eliminating exposure to arc flash hazards.

Part Number	Description
DATA ACCESS PORTS	
DAP3BC-S0-5	3 in. Base, Simplex Outlet, Category 5e Coupler
DAP3BC-S0-6	3 in. Base, Simplex Outlet, Category 6 Coupler
DAP3BC-S3-5	3 in. Base, Simplex Outlet, 3 Amp Breaker, Category 5e Coupler
DAP3BC-S3-6	3 in. Base, Simplex Outlet, 3 Amp Breaker, Category 6 Coupler
DAP4BC-G0-5U	4 in. Base, GFCI Outlet, Category 5e Coupler, USB Coupler
DAP4BC-G0-5	4 in. Base, GFCI Outlet, Category 5e Coupler
DAP4BC-G0-6	4 in. Base, GFCI Outlet, Category 6 Coupler
DAP4BC-G3-5	4 in. Base, GFCI Outlet, 3 Amp Breaker, Category 5e
DAP4BC-G3-6	4 in. Base, GFCI Outlet, Category 6 Coupler, 3 Amp Breaker
30 MILLIMETER BULKHEADS	
IAEBHUSBAA	IndustrialNet USB industrial bulkhead connector with protective cover
IAEBHC5E	IndustrialNet Category 5e, 8-position, 8-wire industrial black bulkhead coupler with protective cover
IAEBHC6	IndustrialNet Category 6, RJ45, 8-position, 8-wire industrial black bulkhead coupler with protective cover
IAEBH6S	IndustrialNet Category 6, RJ45, 8-position, 8-wire shielded black industrial bulkhead connector with protective cover



3 Inch Data Access Port



4 Inch Data Access Port



30 Millimeter Bulkhead

Printer and Installation Tools

Installation tools and printers improve assembly efficiency and consistency across semiconductor equipment, supporting everything from identification to wiring duct, terminals, ferrules, and lugs.

Part Number	Description	Std. Pkg. Qty.
CP-881	A semi-automated tool that provides a quick three step process (wire stripping, ferrule placement, and ferrule crimping) with a cycle time of 1.5 seconds. Used with Panduit continuously molded #20–14 AWG (0.5 – 2.5mm ²) DIN ferrules on mini-reels of 500–3000 pieces for quality, medium to high volume terminations	
CP-991	A bowl-fed semi-automated tool that provides a quick three step process (wire stripping, ferrule placement, and ferrule crimping) with a cycle time of 1.5 seconds. Used with #24–12 AWG (1.25–4.0mm ²) DIN ferrules for quality, medium to high volume terminations	
CT-1170	Controlled cycle ferrule crimp tool with square profile for 28–5 AWG (0,08–16mm ²) covered and non-covered single wire ferrules and 23–10 AWG (2 x 0.25mm ² –2x 6mm ²) covered twin ferrules.	
CT-1550	Crimps most Pan-Term® #22 – 10 AWG Nylon and Vinyl Insulated Terminals, Splices, and Disconnects. Red/Blue pocket closest to the pivot which provides a reduced crimp effort for those who make Red/Blue terminations.	
CT-2931/STBT	Perfect for heavy duty applications, the hydraulic crimp tool for lugs ensures quick and precise terminations with a rotating flip-top crimp head. Battery-powered and designed to handle a 12-ton force.	1
CT-3001/STBT	Battery-powered crimping tool for lugs effortlessly handles various tasks. Quick-change adapter design, Bluetooth® connectivity with a powerful 6.7-ton force ensure efficient and reliable connections.	
DCT	Hand-held duct cutting tool	
DP4300M	300 dpi printer. Includes printer, Easy-Mark Labeling Software, RMEH4BL black hybrid ribbon, USB cable, quick start guide, and U.S. power cord. For use in North America.	
GTS-E	Ergonomic cable tie hand tool. Installs Subminiature, Miniature, Intermediate, Standard cable tie cross sections. Impact resistant resin	
PBDCT	Bench-mount duct cutting tool. Cuts slotted wiring ducts and wiring duct covers with up to 6 in. width and up to 5 in. height. Full 78.74 in. (2m) measuring scale. Includes safety guarding.	



CT-1550



CT-2931/STBT



DP4300M



GTS-E



Customer Support

Looking for the full portfolio for semiconductor environments?
Explore the full offering on our website.

▶ Learn more at [panduit.com](https://www.panduit.com).

We have the knowledge
and experience to help you
make the most of your
infrastructure investment.

panduit.com



Let's connect
panduit.com/contact-us

PANDUIT[®]

infrastructure for a connected world