



Network Infrastructure for Assisted Living Facilities

Aging populations that are more tech-savvy, combined with medical technology that touches every aspect of medical care, is changing the landscape for long-term living.

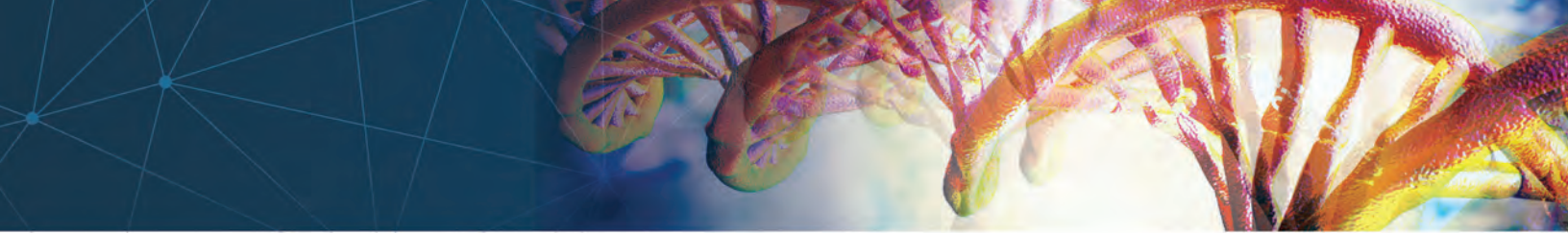
A new population of seniors is looking for independent living options, and this population is taxing the network in assisted living communities. This population is accustomed to steady use of connected consumer electronic devices. This goes beyond mobile phones, tablets and computers to wearables, watches, gaming consoles and a new generation of media streaming devices, smart speakers, and smart home devices. Combine this resident-driven demand with medical and building technology requirements and facility owners and operators are finding they must rethink their network.

So, how do you keep up with these network demands? Start with a robust infrastructure that meets the needs not only today, but also well into the future.

- Category 6A cabling ensures that residents and their guests have wireless connectivity 24/7 to stream whatever they want, whenever they want, on any device; and, it delivers peace of mind that any medical or building equipment that may be needed will be supported
- Find space for the equipment; innovative solutions can help you squeeze more into telco rooms, or if TR space isn't available, wall-mount and in-ceiling enclosures can house components near the application

77
million

people will retire over the next two decades.



Horizontal Cable



Part Number	Part Description
PUP6AV04BU-G	Category 6A U/UTP Copper Cable with Vari-MaTriX Technology, plenum, 4-pair, Blue.

Copper Patch Cords



UTP6ASD3BU	Category 6A performance with MaTriX™ Technology, 26AWG, UTP Patch Cord, CM, Blue, 3ft.
UTP28X3BU	Category 6A performance, 28AWG, UTP Patch Cord, CM/LSZH, Blue, 3ft.
BKA6ASD9INBL	Category 6A break-away adapter, Black. For use with wired applications, releasing when pulling force is applied to reduce tripping hazards, and protect equipment and infrastructure.

RJ45 Jack and Plug Modules



CJ6X88TGBU	Category 6A, RJ45, 8-position, 8-wire jack module with MaTriX™ Technology. Supports high-bandwidth applications and is ideal for running next generation Power over Ethernet (PoE++). UL Rated: UL 1863 and UL 2043.
CJH6X88TGBU	Category 6A, RJ45, 8-position, 8-wire jack module with MaTriX™ Technology and integrated shutter.
NK6X88MBU	Category 6A RJ45, 8-position, 8-wire keystone jack module. Supports high-bandwidth applications and is ideal for running next generation Power over Ethernet (PoE++).
FP6X88MTG	Category 6A field terminable plug for field termination of 4-pair unshielded twisted pair cable, compatible with Category 6A, 6 and 5e.

Patch Panels



CPPL24WBLY	24-port modular patch panel with labels, supplied with factory-installed front removable snap-in faceplates.
NKFP24Y	24-port modular patch panel, keystone, with front accessible faceplates.

Faceplates



CFPL4SY	Single gang, stainless steel vertical faceplate with label pockets; accepts four Mini-Com® modules.
NKF4S	Single gang, stainless steel vertical faceplate with label pockets; accepts four keystone modules.
CFPL2IWY	Single gang, flush mount vertical faceplate with label pockets; accepts two Mini-Com® modules.
NK2FIWY	Single gang, flush mount vertical faceplate with label pockets; accepts two keystone modules.

Enclosures



PZWMC12W	PanZone® Wall Mount Cabinet with windowed door, 12 RU, Black.
PZWMC26W	PanZone® Wall Mount Cabinet with windowed door, 26 RU, Black.
PZICEA	PanZone® Active In-Ceiling Enclosure with hinged door, accommodates 2 RU active equipment and 6 RU patch panels, includes mounting brackets, integrated horizontal slack manager, AC power provisions, fan assembly, air dam, and electrical junction box.

Racks



R2P	Standard 19" EIA Aluminum 45 RU 2-Post rack with hardware kit and paint piercing bonding kit, numbered up.
R4P	Standard 19" EIA Steel 45 RU 4-Post rack with hardware kit and paint piercing bonding kit, numbered up.

See www.panduit.com for additional colors, sizes, cable jackets, and performance offerings.