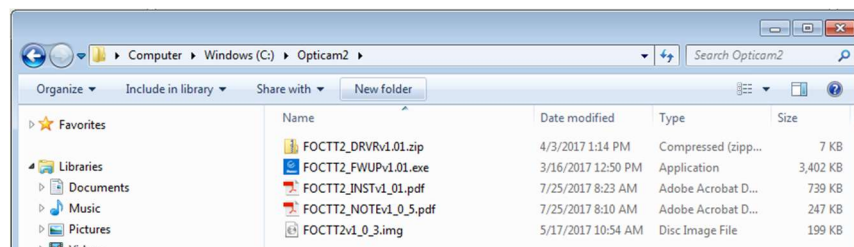


## Download the latest FOCTT2 firmware

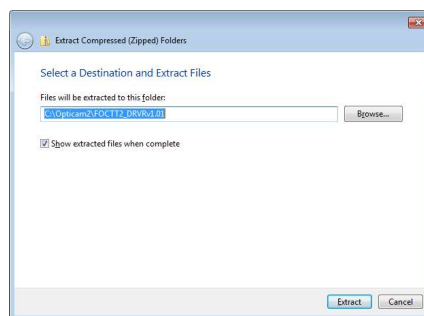
- Connect to [www.panduit.com](http://www.panduit.com).
- Navigate to SUPPORT->DOWNLOAD CENTER->Opticam2 Tool Update.
- Select the file FOCTT2vX\_Y\_Z.img where X.Y.Z corresponds to the latest version of the Opticam 2 firmware. These instructions demonstrate updating version 1.0.3 to 1.0.5.
- Select "Save" to download the file to the default download folder or select "Save As" and navigate to, or create an alternative download folder, for example; C:\Opticam2.
- Optionally, download and review the Opticam2 Release Notes and Update Instructions
- If this is the first update session, download the Opticam2 Firmware Update Tool and the VCOM drivers for Opticam2 Update Tool.

## 2. Perform the Tool Update for the first time (skip this section if the Updater Tool has been previously used)

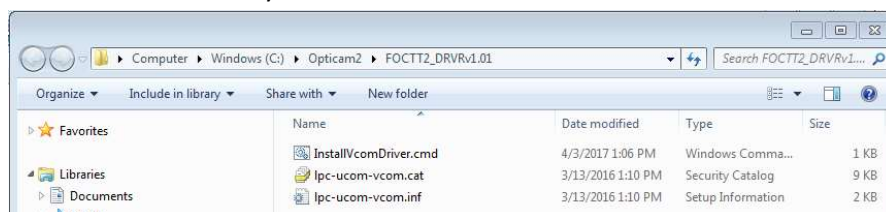
- Make sure the Opticam 2 tool is turned off and not connected to the computer with a micro USB cable.
- Using Windows Explorer, navigate to the download folder (C:\Opticam2).



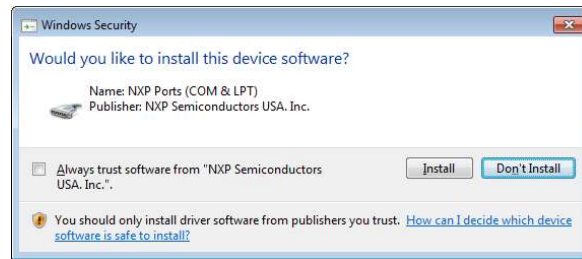
- Right click on the file FOCTT2\_DRVrvX\_YY.zip and select "Extract all..." from the fly out menu.
- Check the "Show extracted file when complete" box and then click the "Extract" button.



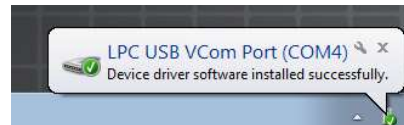
- On the next window, right click the file "InstallVcomDriver.cmd" and select "Run as administrator" from the fly out menu



- f. Click “Install” on the Windows Security screen to allow for the driver files to install. There will be a small Command window also open. This window will automatically close when the files are installed. Typically, this is about 2 seconds but will vary from machine to machine.

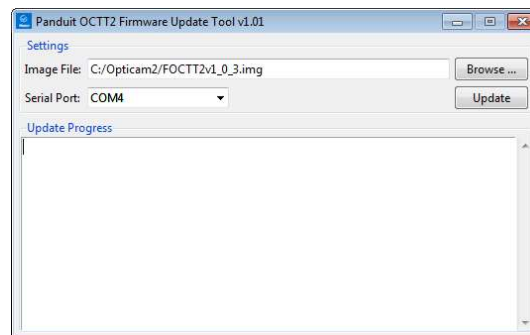


- g. Connect the Opticam 2 tool and get the tool to the Bootloader mode of operation (see below). A balloon indicating the installation progress may appear in the lower right of the computer screen. Another balloon should appear to indicate the successful completion. These balloons will automatically close.



### 3. Perform the Tool Update

- Using Windows Explorer, navigate to the download folder (C:\Opticam2).
- Double click on the file name FOCTT2\_FWUPvX\_Y.exe to start the application

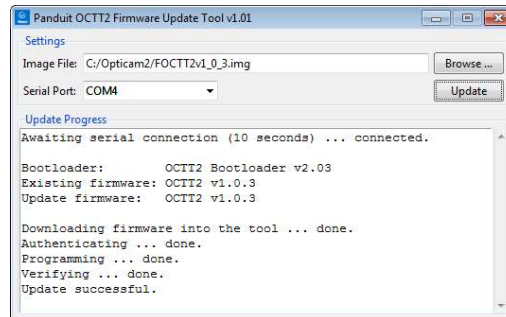


- Click the “Browse” button and navigate to and select the FOCTT2vX\_Y\_Z.img file in the download folder.
- Connect the Opticam 2 tool and get the tool to the Bootloader mode of operation (see below).
- In the Updater screen, select the COM port if it is not already set. If the COM port is not known see “Determining the COM port” section below.

- f. Click Update. Click “Yes” to confirm the update.



- g. When completed, disconnect the tool.



#### 4. Starting the Opticam 2 Bootloader

- a. Connect to the tool to the computer with a micro USB cable, power the tool and from the “Load Connector” screen press/release the Up directional switch to “box” the ●●● icon in the upper right corner of the screen
- b. Press the center of the switch (Select) to get to the “Select Options” menu screen.



- c. Press/release the Down directional switch several times until the “Tests” option is boxed. Press Select to get the “Tests” menu screen.
- d. Press/release the Down directional switch several times until the “Firmware Update” option is boxed.
- e. Press Select and an informational screen is presented. Press the Down directional switch and the Opticam 2 tool will power down after two seconds. Pressing any other switch will cancel this sequence

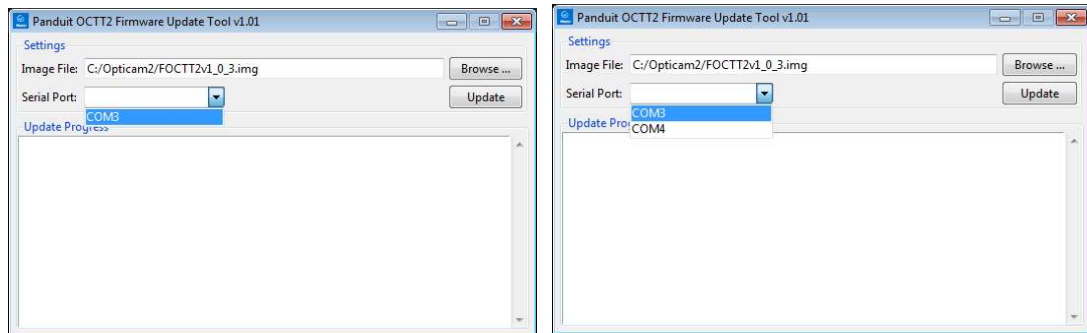
<div>----OptiCam 1.0.3 ----</div> <div>Select Option</div> <div>Exit</div> <div>Power Down</div> <div>Connector Type</div> <div>Tool Settings</div> <div>Records</div>	<div>----OptiCam 1.0.3 ----</div> <div>Select Option</div> <div>Connector Type</div> <div>Tool Settings</div> <div>Records</div> <div>Date/Time</div> <div>Tests</div>	<div>----OptiCam 1.0.3 ----</div> <div>Tests</div> <div>Back</div> <div>Memory</div> <div>Display</div> <div>Readings</div> <div>Firmware Update</div>	<div>----OptiCam 1.0.3 ----</div> <div>Tests</div> <div>Down switch will power down. Updater will run on next power up. Any other switch will exit</div>
--	--	--	--

- f. Turn the tool back on and it will start up in the Firmware Bootloader as indicated by a complete blue screen with a small text banner at the top.



### 5. *Determining the COM port*

- a. Using Windows Explorer, navigate to the download folder (C:\Opticam2).
- b. Double click on the file name FOCTT2\_FWUPvX.Y.Z.exe to start the application.
- c. Click the down arrow in the Serial Port selection box. This will indicate the COM ports available to the system without the Opticam 2 connected.
- d. Click anywhere else to close the list box.
- e. Connect the Opticam 2 tool and get the tool to the Bootloader mode of operation (see above).
- f. Click the down arrow in the Serial Port selection box again. This will indicate the COM ports available to the system with the Opticam 2 connected. There should be one additional entry in the list, this is the port associated with the Opticam 2 tool.



**Any questions regarding the OptiCam 2 tool, firmware and or instructions, please contact Seamus Hamrin at 81906 or [SKH@panduit.com](mailto:SKH@panduit.com)**