

## FOCTT2 Firmware Update Tool for Windows v1.0.7

## Contents

General .....	2
Supported Hardware.....	2
Supported OS Compatibility .....	2
Updating the OCTT2 using Windows .....	3
1. Download the latest FOCTT2 software and firmware.....	3
2. Perform the Tool Update .....	3
3. Starting the OptiCam 2 Bootloader .....	8
4. Troubleshooting: Determining the Serial Port.....	9
5. Troubleshooting: Firmware Bootloader Recovery Mode .....	10
6. Troubleshooting: Support.....	11
Document History.....	12

Copyright © 2018 Panduit Corp. All rights reserved. No part of this book shall be reproduced, stored in a retrieval system, or transmitted by any means, electronic, mechanical, photocopying, recording or otherwise, without written permission from Panduit. No patent liability is assumed with respect to the use of the information contained herein.

Although every precaution has been taken in the preparation of this book, Panduit assumes no responsibility for errors or omissions. Neither is any liability assumed for damages resulting from the use of the information contained herein.

## General

These instructions will guide you through the usage of the OCTT2 Firmware Update Tool for Windows.

## Supported Hardware

<i>Model</i>	<i>Required Firmware to support Release</i>	<i>Notes</i>
OCTT2	Boot loader v2.03 and newer Firmware v1.0.3 and newer	The FOCTT2vX_Y_ZFirmware.zip archive includes the latest firmware version.

## Supported OS Compatibility

<i>Application</i>	<i>Support</i>	<i>Known Limitations</i>
Windows 7, Windows 10 or newer	Yes	We expect this software to work correctly on all versions of Windows 7, and Windows 10 or newer. If you encounter an issue, please contact Panduit Technical Support.
Windows Vista x64 Windows 8 x64	No	The provided USB serial driver is intended for Windows 7 32-bit or x64. Windows Vista x64 and Windows 8.1 x64 are not supported. No driver is required on Windows 10 32-bit or x64. Workaround: Use Windows 7 or Windows 10 with the OptiCam2 Firmware Updater application.

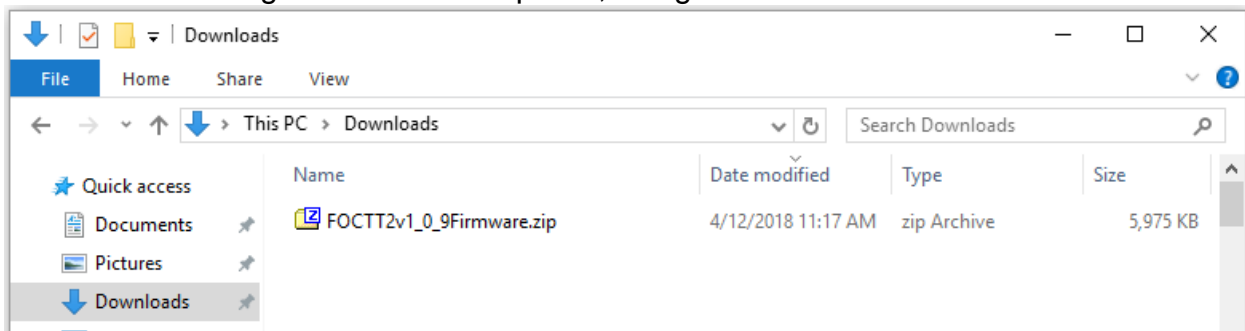
# Updating the OCTT2 using Windows

## 1. Download the latest FOCTT2 software and firmware

- a. Connect to [www.panduit.com](http://www.panduit.com).
- b. Navigate to SUPPORT > DOWNLOAD CENTER > SOFTWARE, FIRMWARE, PRINTERS > OptiCam® 2 Termination Tool.
- c. Click the link “OptiCam® 2 Firmware vX.Y.Z for Windows” where X.Y.Z corresponds to the latest version of the OptiCam® 2 firmware. These instructions demonstrate updating to 1.0.9. Note that the latest firmware image is delivered with the Windows application. A separate “.img” file may be downloaded and used with the firmware update tool.
- d. If prompted, “Save” the ZIP file to the default Downloads folder. The ZIP file contains release notes, documentation, a device driver, the firmware updater application and firmware image. The ZIP file is named FOCTT2vX\_Y\_ZFirmware.zip, where X\_Y\_Z corresponds to the version of the OptiCam 2 firmware.
- e. Optionally, download the Firmware Update Instructions for Windows (this document).

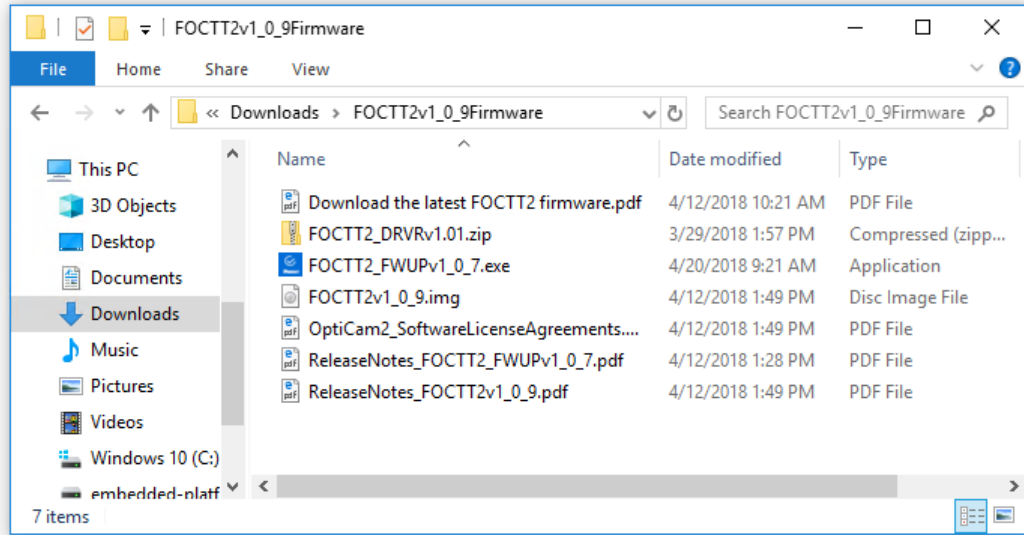
## 2. Perform the Tool Update

- a. Using the Windows Explorer, navigate to the Downloads folder.

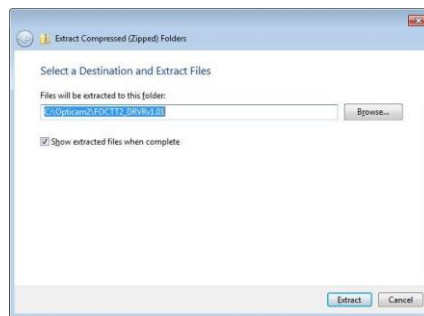


- a. If the ZIP file was not already expanded, open the ZIP file “FOCTT2vX\_Y\_ZFirmware.zip to expand it. In this example, X\_Y\_Z is 1\_0\_9.

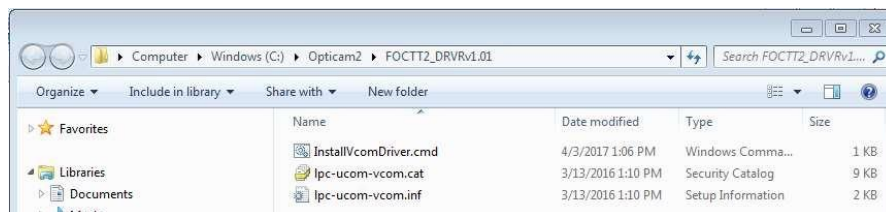
- b. Open the “FOCTT2vX\_Y\_ZFirmware” folder.



- c. Right click on the file FOCTT2\_DRVRv1\_01.zip and select “Extract all...” from the context menu.  
 d. Check the “Show extracted file when complete” box and then click the “Extract” button.



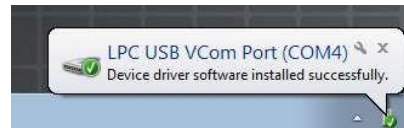
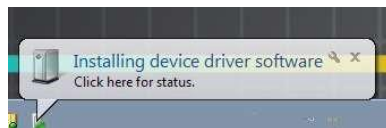
- e. On the next window, right click the file “InstallVcomDriver.cmd” and select “Run as administrator” from the context menu



- f. Click “Install” on the Windows Security screen to allow for the driver files to install. There will be a small Command window also open. This window will automatically close when the files are installed. Typically, this is about 2 seconds but will vary from machine to machine.



- g. Connect the OptiCam 2 tool and get the tool to the Bootloader mode of operation (see below). A balloon indicating the installation progress may appear in the lower right of the computer screen. Another balloon should appear to indicate the successful completion. These balloons will automatically close.



- h. Open the FOCTT2\_FWUPvJ\_K\_L.exe icon to start the application.



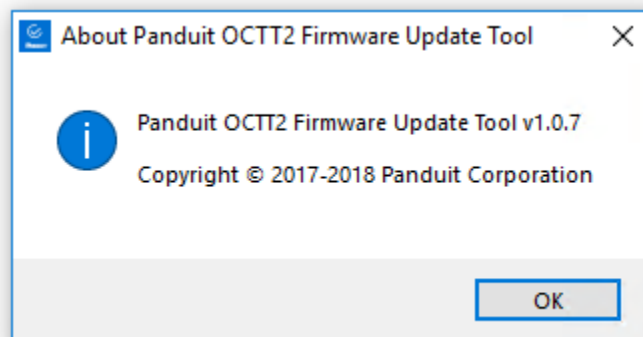
FOCTT2\_FWUPv1\_0\_7.exe

OR

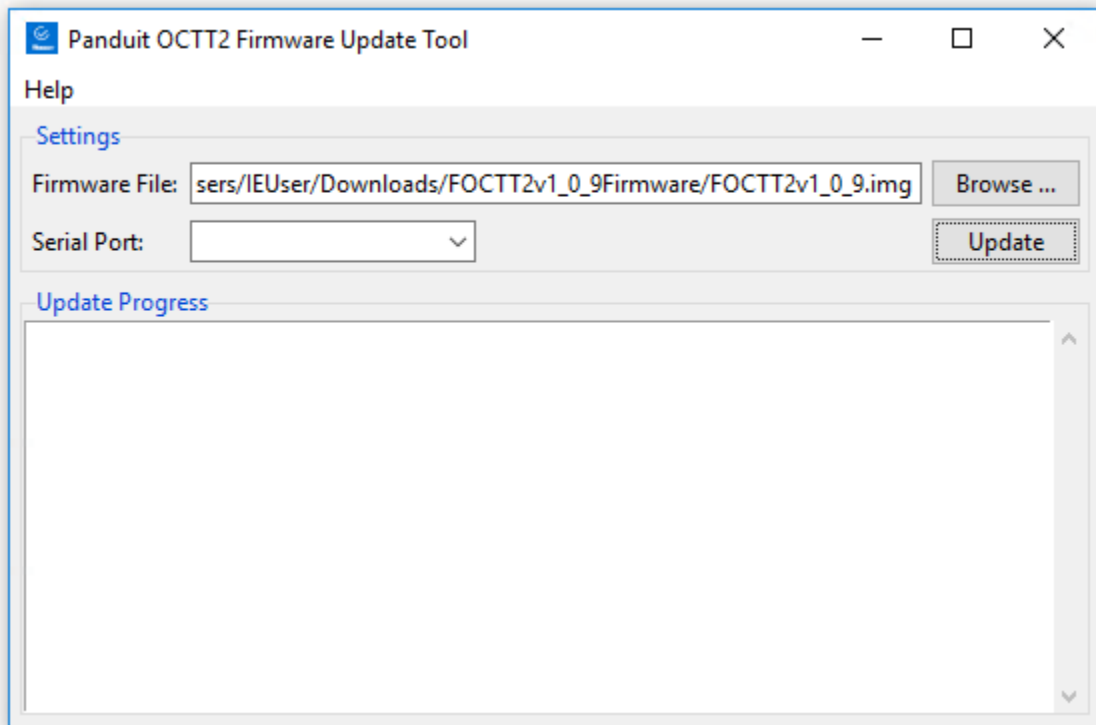


FOCTT2\_FWUPv1\_0\_7.exe

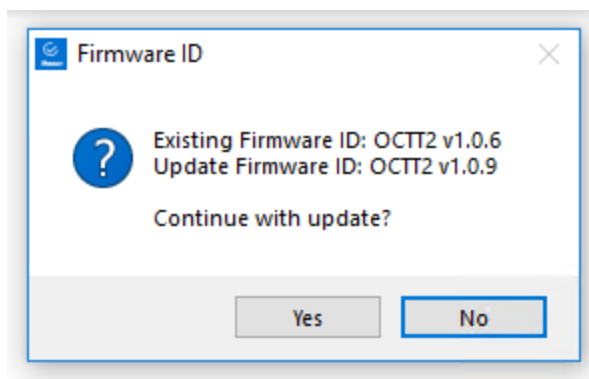
- i. Optionally choose “About Panduit OCTT2 Firmware Update Tool” from the “Panduit OCTT2 Firmware Update Tool” menu to view more information about the firmware update software.



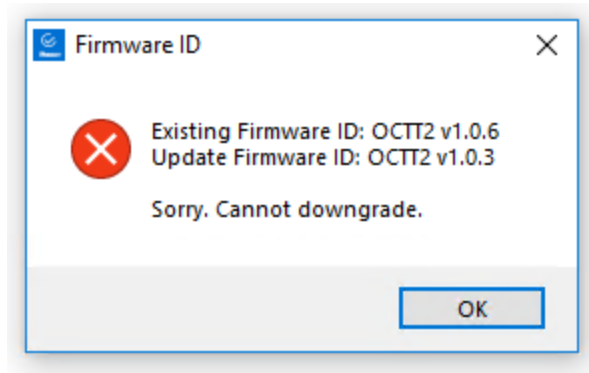
- j. The application displays a Settings and Progress window.



- k. If a different firmware version is desired, click the “Browse” button and navigate to and select a FOCTT2vX\_Y\_Z.img file.
- l. Connect the OptiCam 2 tool and get the tool to the Bootloader mode of operation (see below).
- m. In the Updater screen, the Serial port default is no device is chosen. In this mode, the updater will scan for the newest USB serial (modem) device connected to the computer when the Update button is pressed. *Note: If the OptiCam 2 is not automatically detected, click the down arrow to show a drop-down menu of the available serial ports. Each time the bootloader is entered, the Serial Port device name may change.*
- n. Click Update. Click “Yes” to continue with the update.  
***Do NOT Disconnect the USB Cable or Reset/Power OFF the OptiCam 2 device until the firmware upgrade has successfully completed. (Disconnecting the USB cable or Powering off/ resetting the OptiCam 2 device during an upgrade may render the OptiCam 2 device inoperable. If this occurs, refer to “Troubleshooting: Firmware Bootloader Recovery Mode”.)***

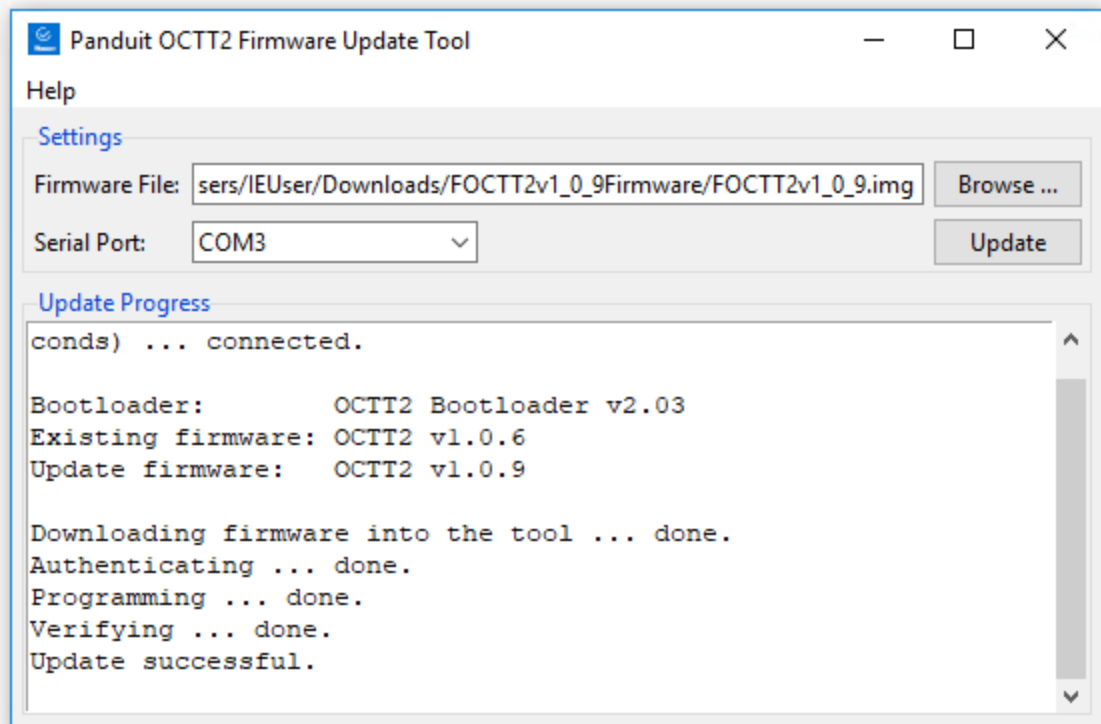


- o. If you attempt to downgrade, you will be presented with a dialog preventing the update.



- p. When completed, disconnect the tool.



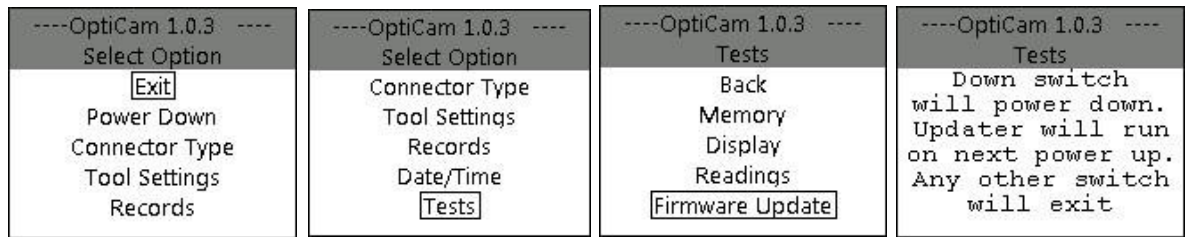


### 3. Starting the OptiCam 2 Bootloader

- a. Connect to the tool to the computer with a micro USB power and data cable, power the tool and from the “Load Connector” screen press/release the Up directional switch to “box” the ... icon in the upper right corner of the screen
- b. Press the center of the switch (Select) to get to the “Select Options” menu screen.



- c. Press/release the Down directional switch several times until the “Tests” option is boxed. Press Select to get the “Tests” menu screen.
- d. Press/release the Down directional switch several times until the “Firmware Update” option is boxed.
- e. Press Select and an informational screen is presented. Press the Down directional switch and the OptiCam 2 tool will power down after two seconds. Pressing any other switch will cancel this sequence



- f. Turn the tool back on and it will start up in the Firmware Bootloader as indicated by a complete blue screen with a small text banner at the top.



## 4. Troubleshooting: Determining the Serial Port

- a. The Windows software attempts to automatically identify the serial port of the OptiCam 2 USB device. However, this can be disabled by choosing a specific serial port.
- b. Using the Windows Explorer, navigate to the folder containing the FOCTT2\_FWUPvJ\_K\_L.exe application.
- c. Double click on the file name FOCTT2\_FWUPvJ\_K\_L.exe c to start the application.
- d. Click the down arrow in the Serial Port selection box. This will indicate the Serial Ports available to the system without the OptiCam 2 connected.
- e. Click anywhere else to close the list box.
- f. Connect the OptiCam 2 tool and get the tool to the Bootloader mode of operation (see above).
- g. Click the down arrow in the Serial Port selection box again. This will indicate the Serial Ports available to the system with the OptiCam 2 connected. There should be one additional entry in the list, this is the port associated with the OptiCam 2 tool.
- h. Click Update to proceed with updating the unit.

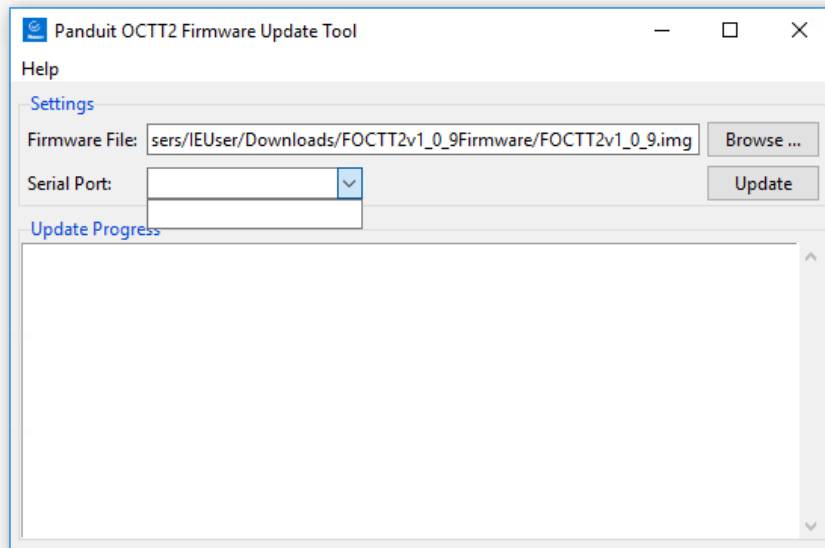


Figure 1 - No serial ports

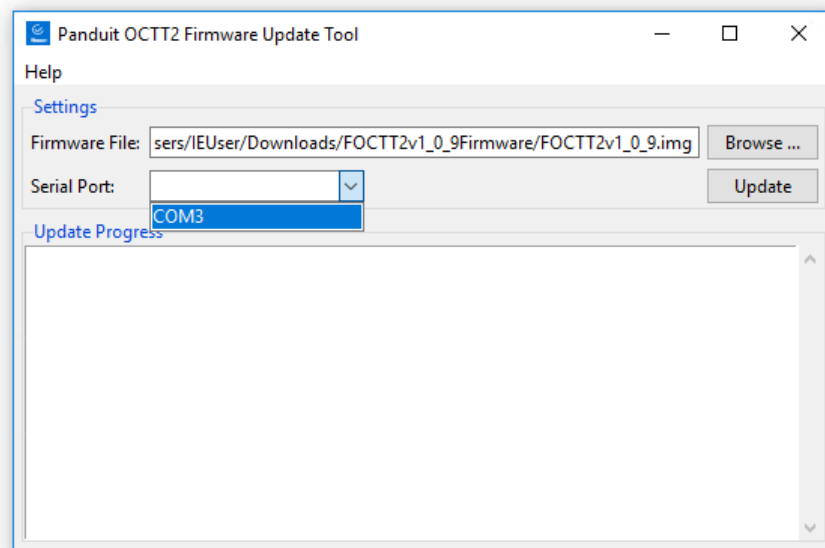


Figure 2 – One additional entry is added to the list when the OptiCam2 is in bootloader mode

## 5. Troubleshooting: Firmware Bootloader Recovery Mode

- a. If the OptiCam 2 tool becomes inoperable due to a fault during the firmware update procedure, the device may exhibit a blank screen instead

- of the “Load Connector” screen.
- b. Please note that weak batteries may exhibit the same “blank screen” behavior.
  - c. To recover an OptiCam 2 from a failed firmware update, the device may be forced into Firmware Bootloader Recovery Mode.
  - d. Remove the batteries from the OptiCam 2.
  - e. Disconnect the USB power and data cable from the OptiCam 2.
  - f. Connect the USB power and data cable to the computer.
  - g. Hold the center (Select) button in a way that depresses the button down and to the right at the same time. This can be achieved by pushing down the center button with your thumb and then rocking the button all the way to the right side, while continuing to use pressure to keep the center (Select) button down. Do not use excessive force on the button.
  - h. Connect the USB power and data cable to the OptiCam 2.
  - i. The OptiCam 2 will start up into the Firmware Bootloader as indicated by a complete blue screen with a small text banner at the top. At this point, the button can be released.
  - j. The device will now accept a firmware update.
  - k. Perform a firmware update as described in this user manual.
  - l. After a successful firmware update, press the center (Select) button to start up the “Load Connector” screen.
  - m. Insert the batteries into the OptiCam 2.
  - n. Remove the USB data and power cable from the OptiCam 2.
  - o. Press the center (Select) button.
  - p. If the device powers off immediately after the button press or shows a low battery icon indicator (a battery with an exclamation mark on it), the batteries must be replaced with new batteries before being operated.
  - q. If the device continues to operate, the unit is ready for operation and has sufficient battery power for basic operation.

## 6. Troubleshooting: Support

- a. Any questions regarding the OptiCam 2 tool, firmware and or instructions, please contact Panduit General Technical Support.

---

## Document History

Revision	Date	Reason for Change
1	April 20, 2018	Revised Windows documentation to match macOS.