

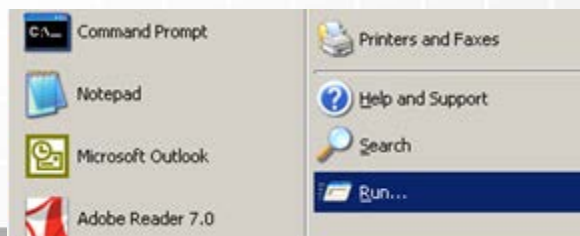


Installing Firmware Updates on PVIQ Panels

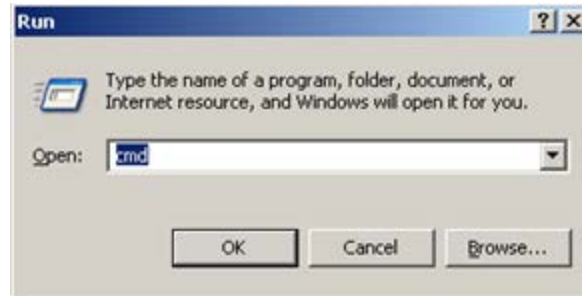
Applies to:	SmartZone PVIQ Panels
Objective:	<p>If your version of Firmware is greater than version 1.08.04, the panels will automatically perform updates, so no further action is required.</p> <p>This technical reference is in relation to any lesser version that will require a firmware update.</p>
Pre-Requisites:	<ul style="list-style-type: none"> • Install and connect the PVIQ hardware indicated in the System Hardware Installation Instructions • Make sure that you have completed all Firmware Preparations as instructed in Technical Reference # TR44 • Determine the firmware versions you are running as described in Technical Reference # TR45 • Check that you have access to a DHCP server

Performing the Procedure

1. Ensure that the first Panel Manager (PM) of the Ethernet daisy chain is connected to a subnet with an available DHCP server.
2. Ensure that the laptop's Ethernet port is set to use DHCP (see your Windows help files for more information).
3. Connect the laptop computer to the available RJ45 port on the last PM of the Ethernet daisy chain.
4. Open a Command window (**cmd.exe**) on the PC by navigating to the Microsoft® Windows® Start icon and selecting the Run icon.

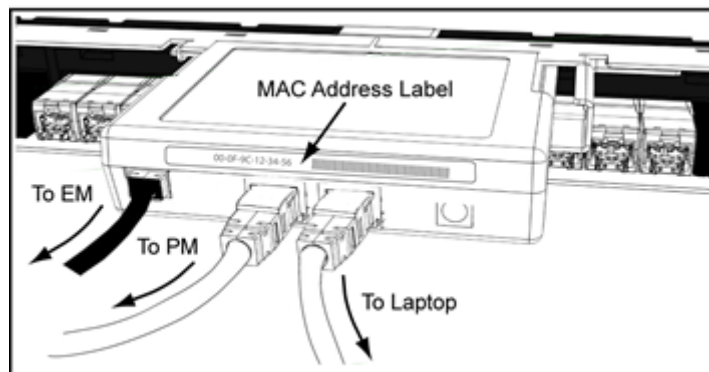


- In the dialog box, type **cmd** (see below) and then hit the **OK** button.



- Navigate to the directory containing the **pviqutil.exe** command.
- Type the following command to discover the IP addresses of all PViQ™ Panel Managers connected to this subnet: **pviqutil-a**

- Compare the MAC-to-IP mapping list with the MAC address label on the desired PViQ™ PM (as demonstrated in the illustration below).



- Type the following command to update each PViQ™ PM group found that needs firmware update: **pviqutil -w (IP Address)**.
- Repeat Step 9 for each IP Address obtained in Step 7.

Firmware Update Complete

- After the firmware update completes, the system automatically goes through a Reset. Observe the following:

- All LEDs are off for a short interval
 - All SYS LEDs are Amber
 - All TRC, MODE, and MAC LEDs are Off
 - All port LEDs flash in the following sequence: amber, red, green, and then remain off.
2. The system starts running with all panels and modules updated:
- All EM SYS LEDs are green
 - The PM SYS LED is green and flashes amber approximately once every 7 seconds
 - All port LEDs flash in the following sequence: amber, red, green, and then remain off

End State

Firmware has been successfully updated.