



WORK INSTRUCTION

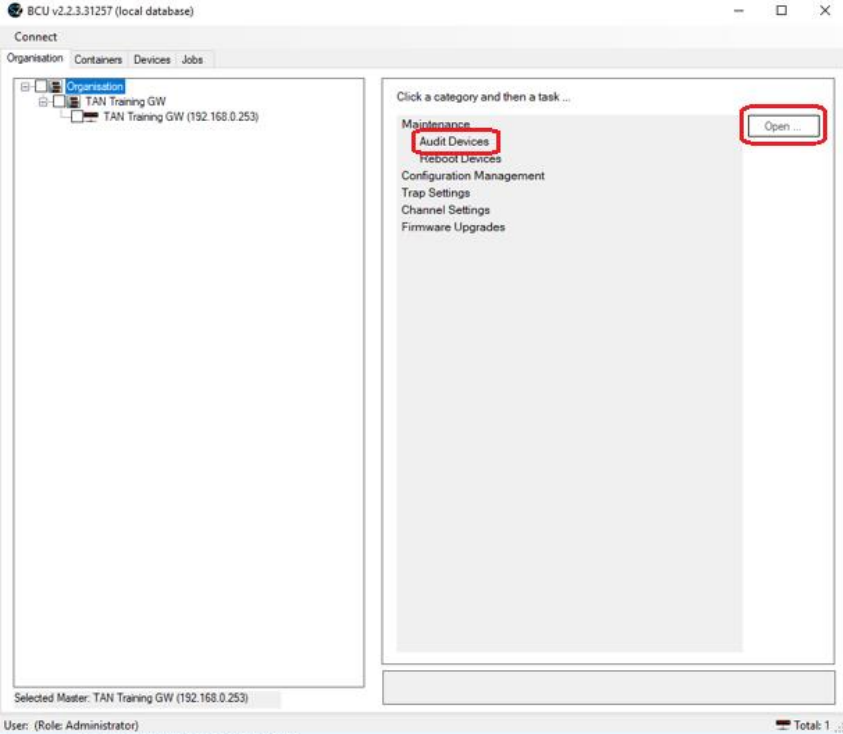
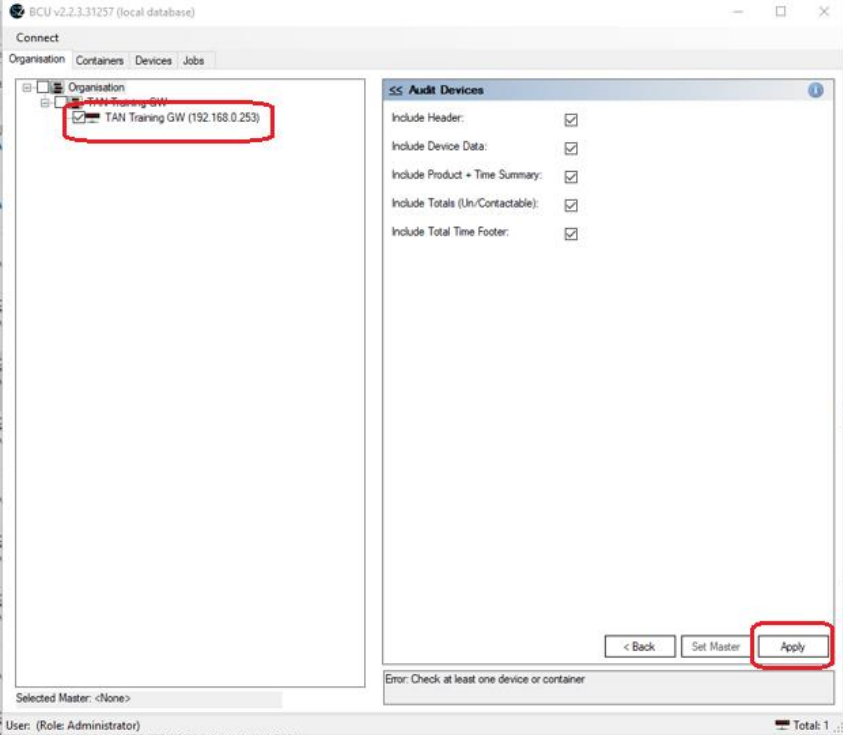
Bulk Configuration Utility – Audit Devices

Applies to:	<ul style="list-style-type: none">▪ Bulk Configuration Utility (BCU)▪ SmartZone Gateways
Objective:	Run an audit on one or more SmartZone EPA devices and gather EPA device-level details and connectivity information.
Documentation Reference:	Bulk Configuration Utility User Manual
Pre-Requisites:	<ul style="list-style-type: none">▪ Bulk Configuration Utility (BCU)▪ SmartZone Gateways

Description

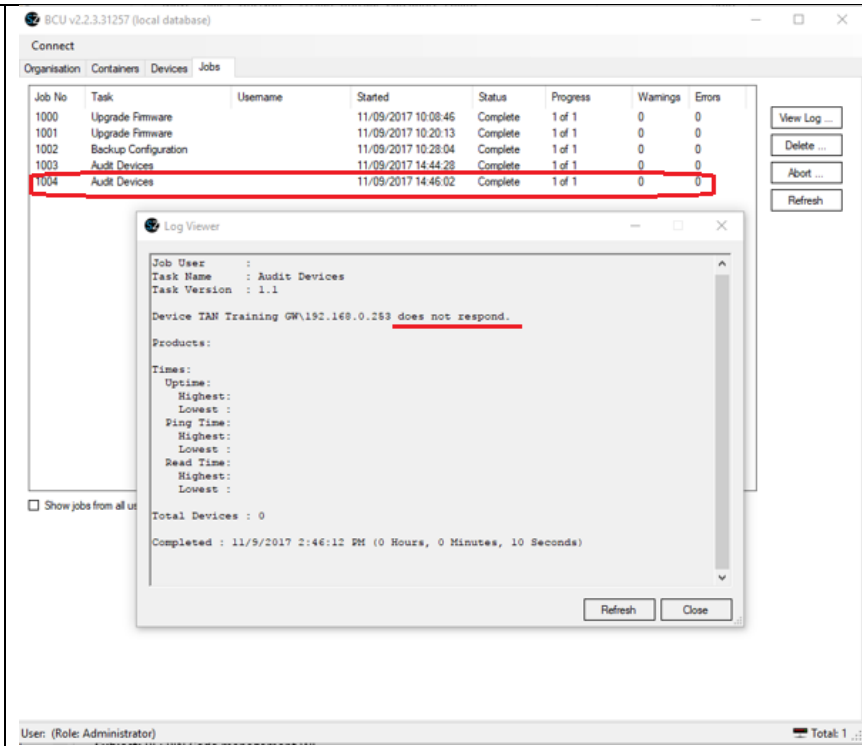
The BCU Audit Devices task creates a job to collect and then display basic data from each selected Gateway. The audit serves as a ping function to confirm connectivity to the Gateways in the organization.

Performing the Procedure

Step	Instruction	Graphic	Result
1	<p>At the BCU Organization tab, click the Maintenance category to expand it, and select Audit and Open.</p>	 <p>The screenshot shows the BCU v2.2.3.31257 (local database) interface. The 'Maintenance' category is expanded, and 'Audit Devices' is selected. The 'Open ...' button is highlighted with a red box.</p>	<p>The Audit Device pane displays on the right side of the window.</p>
2	<p>Select the Gateways to audit in the left pane, and uncheck any options you want to omit from the audit in the right pane. Click Apply, and then click the Jobs tab at the top of the window.</p>	 <p>The screenshot shows the BCU v2.2.3.31257 (local database) interface. The 'Audit Devices' pane is visible, and the 'Apply' button is highlighted with a red box.</p>	<p>The Jobs tab displays all jobs, including the Audit, which will display as complete when the job is finished.</p>

3

Double-click the audit job when it is complete.



The Log Viewer opens, showing the results of the completed audit. In this example, the Gateway pinged did not respond.

End of Steps

End State

You have received information about the connectivity of each Gateway selected for the audit.