



Instructions to Enable Simulator in SynapSense

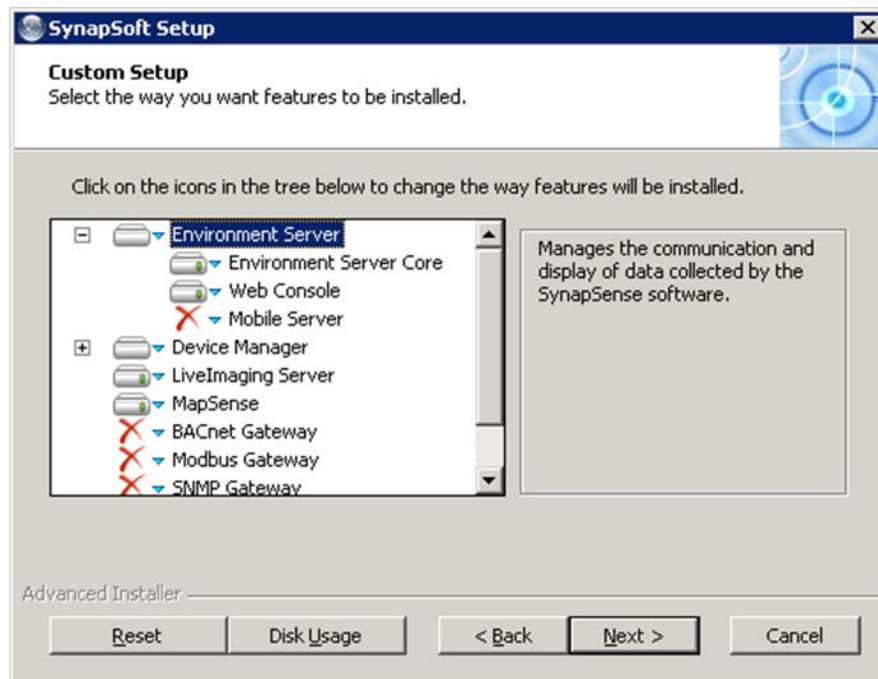
Applies to:	SynapSense Software
Objective:	Install simulator feature for MapSense.

Performing the Procedure

Choose A or B below...

- A. If this is a new install, proceed with **Unified Installer** (SynapSense Setup).
- B. If already installed, use **Windows Control Panel**.
 - Select **Uninstall a program**
 - Highlight **SynapSoft**
 - Select **Change**
 - Proceed to second screen
 - Select **Modify**

By either of the previous steps you will now be at the Custom Setup screen pictured below.



1. Expand the **Device Manager** list.
2. Change **WSN plug-in** feature to **Entire feature will be unavailable**.
3. Change **Simulator plug-in** feature to **Will be installed on local hard drive**.
4. Proceed by clicking on **Next** and follow through to the completion of setup.
5. If Files in use message box appears, choose **Automatically close applications and attempt to restart them after setup is complete**.
6. Close all open windows.

Configuration of MapSense

1. Next open a populated exportable MapSense.dlz file
2. Under the **Export** drop-down list run **Pre-export Validation** to verify file is ready for Export.
3. Export Schema by pressing the **Export** button.

After **Schema Saved Successfully** appears, perform the following steps.

1. Under the **Project** drop-down list, select **Change user level**, in the new window select **Export** in the Access Level space, and use Access Code **1234**. Then press **OK**.
2. At the **Export** drop down list, select **Config File**, and from list to the right choose **Simulator**. This will open a new window titled Export Simulator Configuration. Choose the path to where the DM Files are located and then click **Save**.

X:\Program Files\Synapsense\SynapDM\conf

3. Restart Server. ¹

¹ Important: The Config File / Simulator Steps #2 & #3 above must be performed after every Export of Schema

Notes

- Expect less than full data reporting for the first 10-15 minutes. After this startup period, full simulated data should be reporting.
- Gateways will produce a WSN warning and show as not synced because there is no actual gateway present. In a simulated environment, this is to be expected. No corrective action is available or required.
- Lines of communication in Wireless Sensor Network side panel pull out of Floorplan will not show wireless routes with simulator.
- Optionally, there are two other selections for simulation. At the Config File / Simulator step there are two more choices below Simulator, **Enhanced Sim** and **Enhanced Sim with Power**.
- Using **Enhanced Sim** allows a step in the configuration to set cooling supply temperature and rack cooling temperature front to back differential in degrees. To set these parameters after saving file to

X:\Program Files\Synapsense\SynapDM\conf

You will be prompted to set Cooling supply set point and Rack Heat factor (Delta T from front to rear of rack).

- Using **Enhanced Sim with Power** allows a step in the configuration to set rack cooling temp front to back differential in degrees, and displays power simulations for power objects in a MapSense dlz file. To set these parameters after saving file to

X:\Program Files\Synapsense\SynapDM\conf

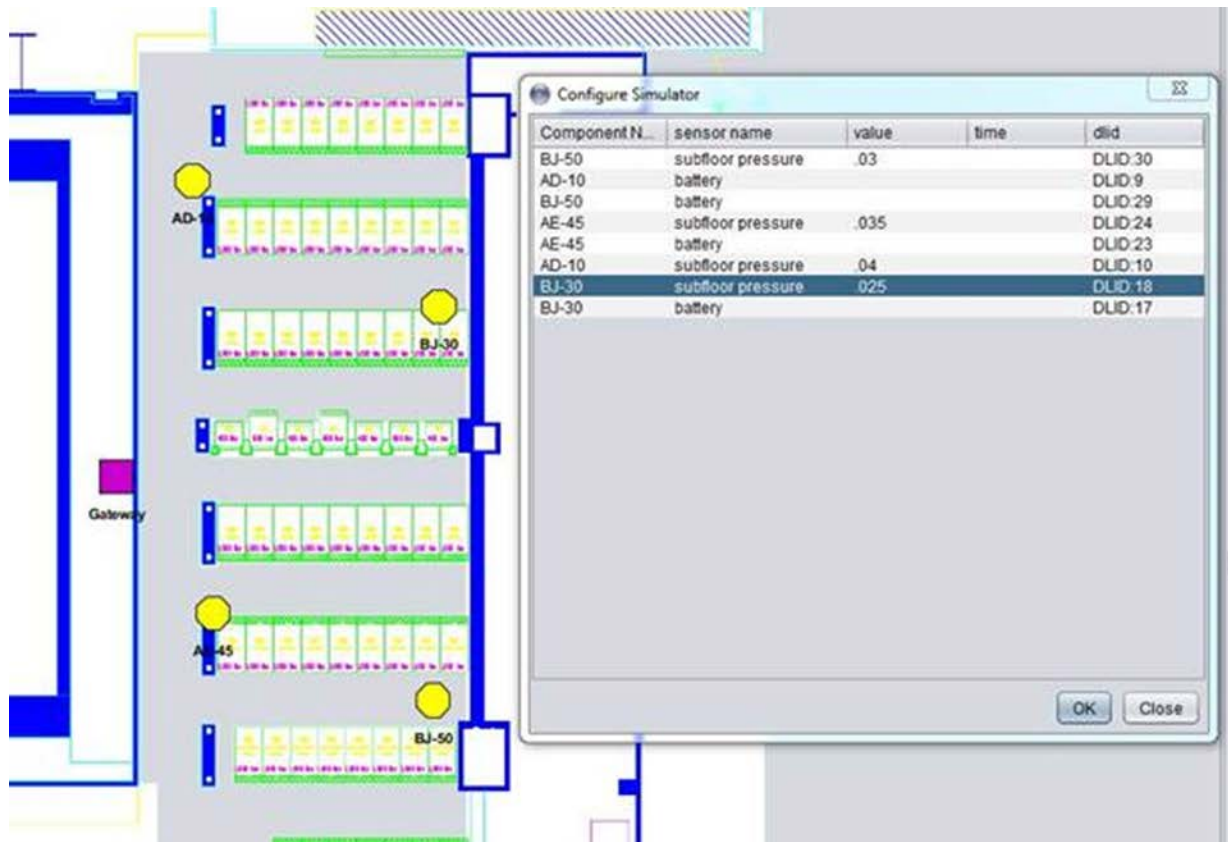
You will be prompted to set Cooling supply set point and Rack Heat factor (Delta T from front to rear of rack). All power items in are read from the database on the server. There is no prompt for power simulation.

Insert Static Data

There is another area for customization for the simulator to interject user defined static data output.

If you have real static values you want to simulate (e.g., Pressure data from a survey) you can enter those in manually.

In MapSense go to project → configure simulator



Then as before, you must export and enable Simulator once again.