

# Aluminum/Copper Bi-Metallic Metric Compression Lugs

Discover the efficiency of Panduit bi-metallic compression lugs, designed for seamless termination of compact metric stranded aluminum wire sizes from 35mm<sup>2</sup> to 400mm<sup>2</sup>.

Our lugs, compatible with CD-920 and CD-940 series crimp dies, ensure a reliable connection with stud hole sizes from M10-M20. Tested to meet IEC61238-1-1:2019/AS/NZS 4325-1 standards, they withstand intense conditions in the APAC marketplace.

Choose from our 12 or 15-ton BlackFin® battery-operated crimp tools for medium-volume needs or our benchtop tools for high-volume production, ensuring your termination solutions are tailored to your requirements.



## KEY FEATURES AND BENEFITS

<b>Aluminum designed wire cable for extended runs:</b>	Transitions from aluminum to copper provide wire material flexibility
<b>Friction welding process:</b>	Provides a solid electrically sound state weld between metals
<b>Barrel color-coded with part number and matching crimping die color:</b>	Marked with Panduit color for proper crimp die selection
<b>IEC61238-1-1:2019/ AS/NZS 4325-1:</b>	All parts meet a nationally recognized safety standard

## APPLICATIONS

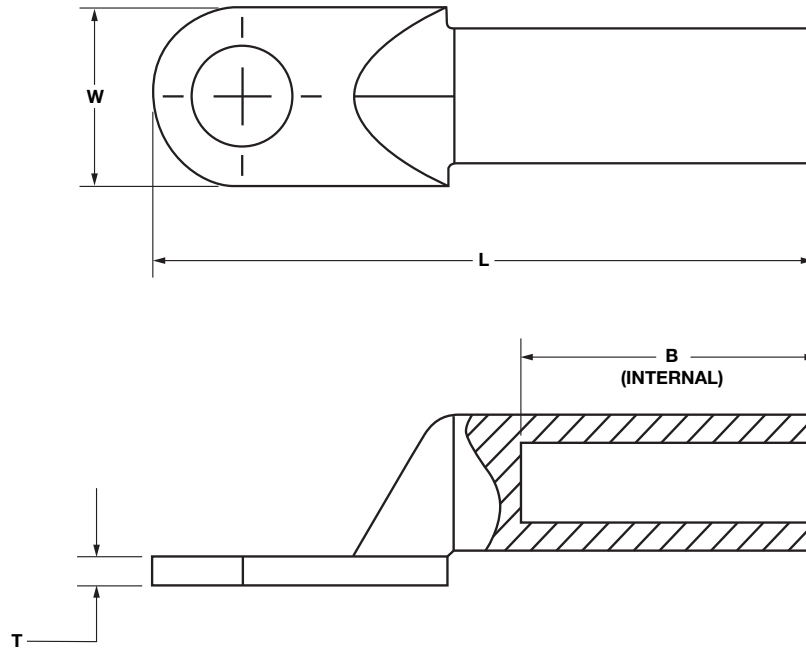
Copper bi-metallic lugs are designed to meet your needs in a variety of critical applications, including:

- OEM Offshore Wind: Ensuring reliable connections in demanding offshore environments.
- Contract Manufacturers and Wire Harness Assemblers: Streamlining your assembly process with high-quality, easy-to-install solutions.
- Solar: Enhancing the efficiency and reliability of your solar installations.
- Data Centers: Providing robust and efficient power connections to keep your data centers running smoothly.

# Aluminum/Copper Bi-Metallic Metric Compression Lugs

Part Number	Aluminum Conductor Size (mm <sup>2</sup> )	Stud Hole Size (mm)	Number of Holes	Figure Dimensions (mm)				Panduit Color Code	Panduit Die Index No.	Wire Strip Length (mm <sup>2</sup> )	Std. Pkg. Qty.	BlackFin Tool	
				W	B	T	L					12-Ton	15 -Ton
BML1-35-10	35	M10	One	20	41	3	85	Gold	P45	41	10	CT-2931/ STBT	CT-2940/ STBT
BML1-50-10	50			23	43	4	90	Tan	P50	43			
BML1-70-12	70	M12		26	50		102	Ruby	P62	50			
BML1-95-12	95			28	54	112	54						
BML1-120-14	120	M14		30	56	5	120	Red	P71	56			
BML1-150-14	150			34	58		126	Blue	P76	58			
BML1-185-16	185	M16		37	60	6	133	Brown	P87	60			
BML1-240-16	240			40	63		140			63			
BML1-300-20	300	M20		45	70	8	158	Pink	P99	70			
BML1-400-20	400			52	75	9	175	Orange	P107	75			

## ISOMETRIC DRAWING



### WORLDWIDE SUBSIDIARIES AND SALES OFFICES

PANDUIT US/CANADA  
Phone: 800.777.3300

PANDUIT EUROPE LTD.  
London, UK  
Phone: 44.20.8601.7200

PANDUIT SINGAPORE PTE. LTD.  
Republic of Singapore  
Phone: 65.6305.7575

PANDUIT JAPAN  
Tokyo, Japan  
Phone: 81.3.6863.6000

PANDUIT LATIN AMERICA  
Guadalajara, Mexico  
Phone: 52.33.3777.6000

PANDUIT AUSTRALIA PTY. LTD.  
Victoria, Australia  
Phone: 61.3.9794.9020

For a copy of Panduit product warranties, log on to [www.panduit.com/warranty](http://www.panduit.com/warranty)

**PANDUIT**<sup>®</sup>

For more information  
Visit us at [www.panduit.com](http://www.panduit.com)  
Contact Customer Service by email: [cs@panduit.com](mailto:cs@panduit.com)  
or by phone: 800.777.3300

© 2024 Panduit Corp.  
ALL RIGHTS RESERVED.  
GRCB13-SA-ENG  
8/2024