

RapidID[™] Network Mapping System

PANDUIT[®]

Application Guide

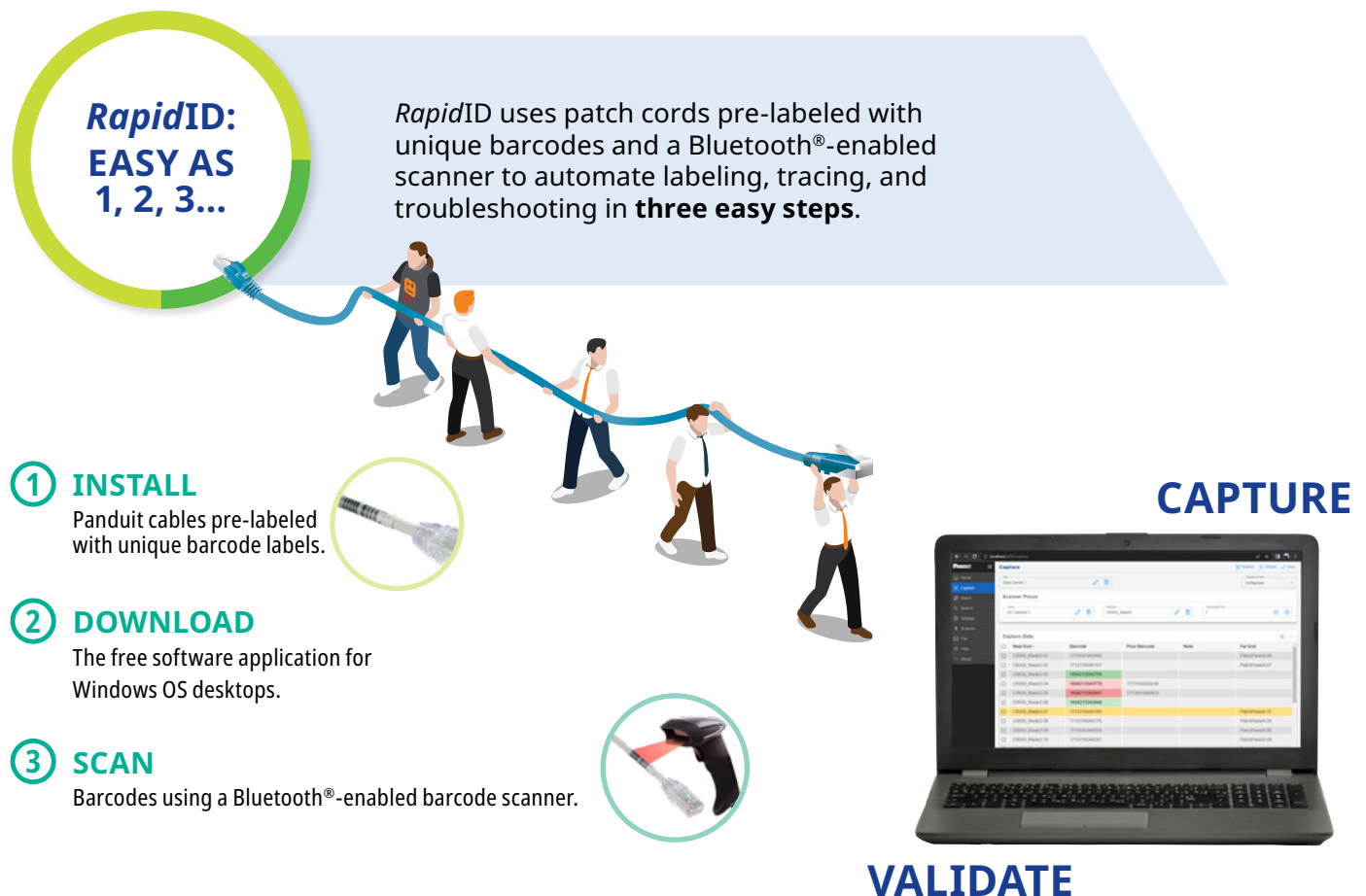


The *RapidID*™ Network Mapping System automates labor-intensive and error-prone cable documentation, resulting in a faster, easier way to place and trace cables and patch cords. It is a practical alternative to traditional manual approaches that are ideally suited for building a new telecom room, locating installed cabling, or replacing a network switch.

Manual documentation is time-consuming, difficult to upkeep, and often vulnerable to errors. As a result, network engineers work overtime to trace and troubleshoot connections during network outages. When these outages occur, they must re-trace, re-label, and even re-audit infrastructure documentation, leading to lost time and productivity.

With the *RapidID* Network Mapping System, the painstaking labeling process is already done. *RapidID* can reduce network cabling documentation by up to 50% while removing human error from the equation. It is an efficient, pain-free patch field management solution that quickly documents cable installations without manual data entry. It is suited for any place where patch cord documentation is necessary, including data centers, multitenant data centers, telecom rooms, EDGE deployments, and remote locations.

RapidID is the practical, affordable alternative to traditional manual approaches that frees-up network engineers and data center managers to focus on more rewarding and strategic initiatives.



The Information Contained In This Application Guide Is Intended As A Guide For Use By Persons Having Technical Skill At Their Own Discretion And Risk. Before Using Any Panduit Product, The Buyer Must Determine The Suitability Of The Product For His/Her Intended Use And Buyer Assumes All Risk And Liability Whatsoever In Connection Therewith. Panduit Disclaims Any Liability Arising From Any Information Contained Herein Or For Absence Of The Same.

Data Center

Comprehensive Data Center network documentation holds information about active devices, power systems, and network infrastructures. Adequate documentation allows network engineers to see the productivity status of an entire data center to diagnose an outage efficiently. All documentation is a complex and essential process as network IT infrastructures continuously evolve, making manual documentation overwhelming. Traditional documentation requires tediously labeling every patch cord end-to-end, then writing down where each cable is connected, which could take months to complete. Once an effective documentation structure is in place, the upkeep can be overwhelming, especially when making changes to the makeup of a data center. By the time changes are underway, documentation is often overlooked, outdated, and almost impossible to fix without starting over. The time-consuming nature of this process is frustrating and breeds errors that could relate to devastating outages.

The *RapidID* solution automates the auditing experience to reduce time drastically, frustration, and margin of error.

Network Infrastructure Documentation

RapidID starts with pre-labeled patch cords that are easy to find and trace using the *RapidID* software application. To document and trace cables or troubleshoot an outage, scan the barcodes on the pre-labeled patch cords to import and update connections. *RapidID* may be installed in a new Data Center network or retrofitted to any existing setup.



Moves, Adds, and Changes

The *RapidID* system makes documentation for infrastructure growth and changes simple to update after the initial setup. Scan the labels on the patch cord(s) to move, make the physical changes, re-scan the barcodes in the new locations, and verify new locations within the app. All of the manual documentation and human errors are eliminated.



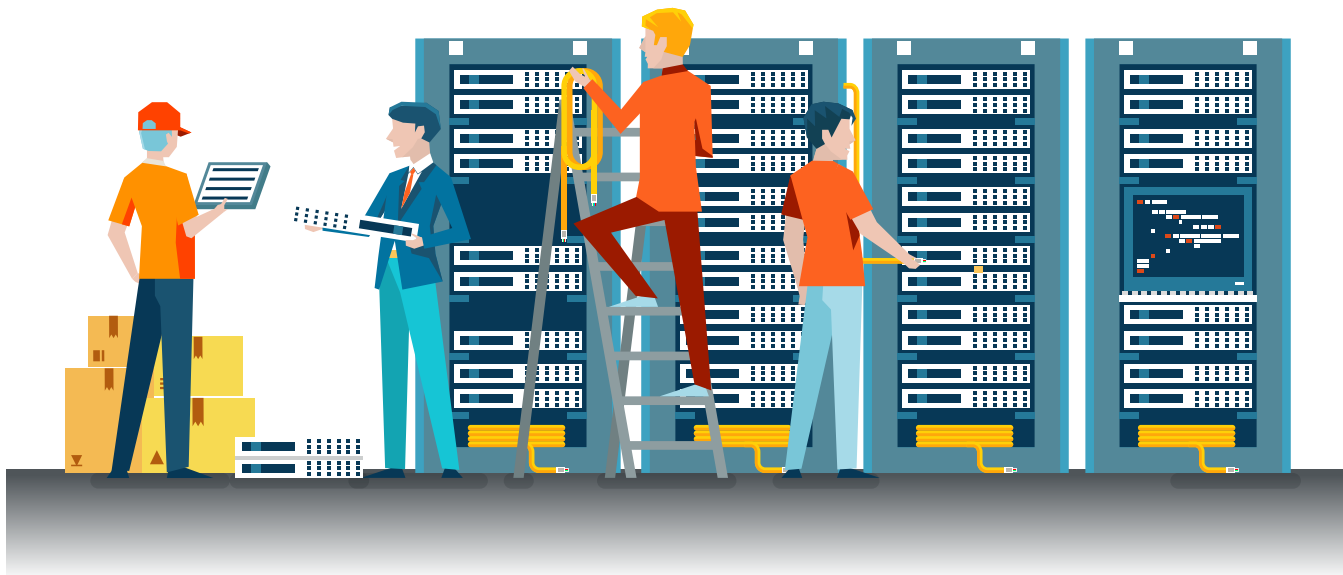
Audits

Data Center audits occur for standards compliance, environmental issues, or outage-related reasons. Audits are essential to validate the performance of a data center and identify vulnerabilities. Audits may identify incompetent cabling setups for infrastructure management that could lead to future network issues. No matter the reason, audits are time-consuming, laborious, and costly. The *RapidID* software application alleviates the stress and cost cable auditing can cause. The software automates cable validation using the documentation information stored by scanning each barcode on the pre-labeled cables. Users can identify connections to ensure cabling is in the right place or quickly fix false configurations, significantly reducing the time needed to audit network connections and fix network maps physically.



Enterprise/Telecom Room

Enterprise environments are more vulnerable to outages and remapping due to turnover, strategy shifts, and lack of network upkeep. As spaces are continuously updated, many IT groups rely on personnel and experience-based knowledge of the network and year-to-year changes. Good network documentation supports organizations but needs to be consistently prioritized, and affects the frequency of network errors and downtime, ultimately stressing the bottom line.



Troubleshooting Outages

Troubleshooting network issues where no documentation is available is risky and unpredictable. Network outages instigate chaos in Enterprise spaces where the primary documentation source is the most experienced engineer's memory. IT Teams only realize the value of annotated documentation once it's too late. The *RapidID* solution aids troubleshooting by housing cable connection information in a simple format. In addition, the match and search software features help identify the proper locations of the physical cabling infrastructure without physically tracing cables. These attributes streamline the time-to-troubleshooting, reduce downtime, and simplify the update process.

Efficient IT maintenance

During maintenance and upgrade periods, there is a limited time window for active equipment and infrastructure changes. Network engineers spend time planning changes so they happen smoothly and without errors that create stress and delay productivity. Some common mistakes include mislabeling and misconfiguring cables, which can occur during maintenance and upgrades and lead to connectivity and performance disruptions. *RapidID* reduces the upkeep risk by recording connection information beforehand and validating connections upon completion. Technicians save valuable time by excluding cable labeling upon installation, easily trace connections automatically, and move on to more rewarding initiatives. These features enable quick and accurate maintenance and upgrades.

RapidID Network Mapping System Features



PRE-LABELED PATCH CORDS WITH UNIQUE *RapidID* IDENTIFIERS

Pre-labeled cables eliminate the need to label cables for documentation purposes manually



FEATURE RICH APPLICATION

A free software application for Windows OS desktops that provides the ability to capture, validate, search, and match patch cable connections*



THIRD-PARTY SCANNING COMPATIBLE

Use a Bluetooth-enabled barcode scanner to simplify and automate the scanning of cables in a network deployment

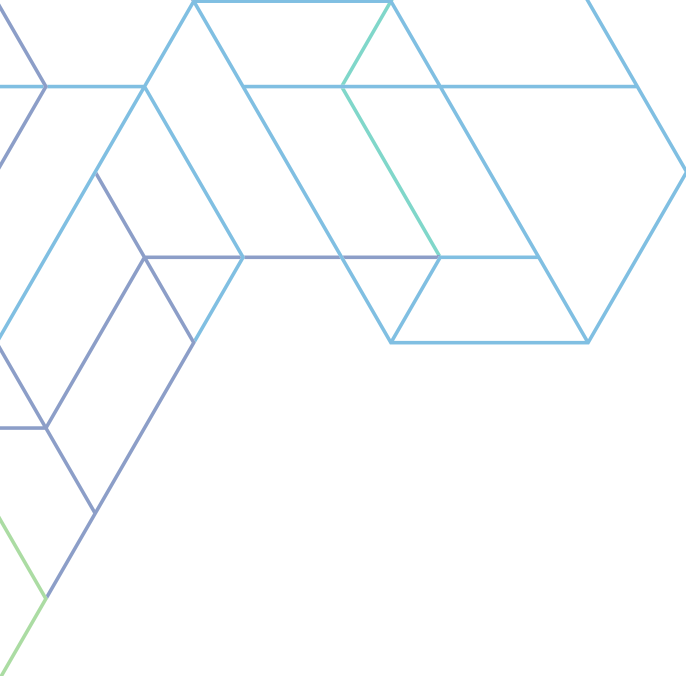
*** PRO/PRO+ ADDITIONAL FEATURES:**

- Print cable, device, and asset labels with a Panduit MP300 printer.
- Document any cable, device, or asset for a more complete record of a network.
- Synchronize documentation as part of a multiple person team.^

^AVAILABLE FOR PRO+

Learn More

For more information
on the system,
visit **panduit.com/RapidID**



We have the knowledge
and experience to help you
make the most of your
infrastructure investment.

panduit.com



Let's connect
panduit.com/contact-us

PANDUIT™

infrastructure for a connected world