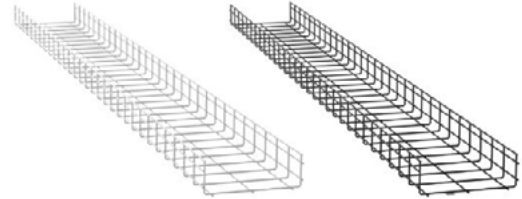


Panduit Wire Basket Cable Tray Routing System

SPECIFICATIONS

The Wire Basket Overhead Cable Tray Routing System shall consist of pathway sections, splice connectors, cable exits, waterfalls, mounting brackets, and accessories designed to route and manage copper, fiber optic, or power cables. The pathway sections shall be provided in the various widths: 4", 6", 8", 12", 18", 24", 30", 36". The baskets are 118.33 inches long and are available in 2", 4", or 6" sidewall heights. Trapeze, cantilever, and wall mount brackets are available to support the system. Baskets, accessories, and components are available in black, electro zinc, pre-galvanized or white.



TECHNICAL INFORMATION

Material:	Black (BL) and White (WH): Steel wire, powder coated black, or white Electro Zinc (EZ): Steel wire electro zinc plated Pre-Galvanized (PG): Steel wire zinc plated
Approvals:	UL Listed for their suitability for use as Equipment Grounding Conductor in accordance with Sections 392.6(A) and 392.6(B) of the NFPA 70 National Electric Code with AMD 1-5 and NEMA VE1. Black and White: Complies with ASTM 510 Electro Zinc: ASTM B633 SC1, Type III

KEY FEATURES AND BENEFITS

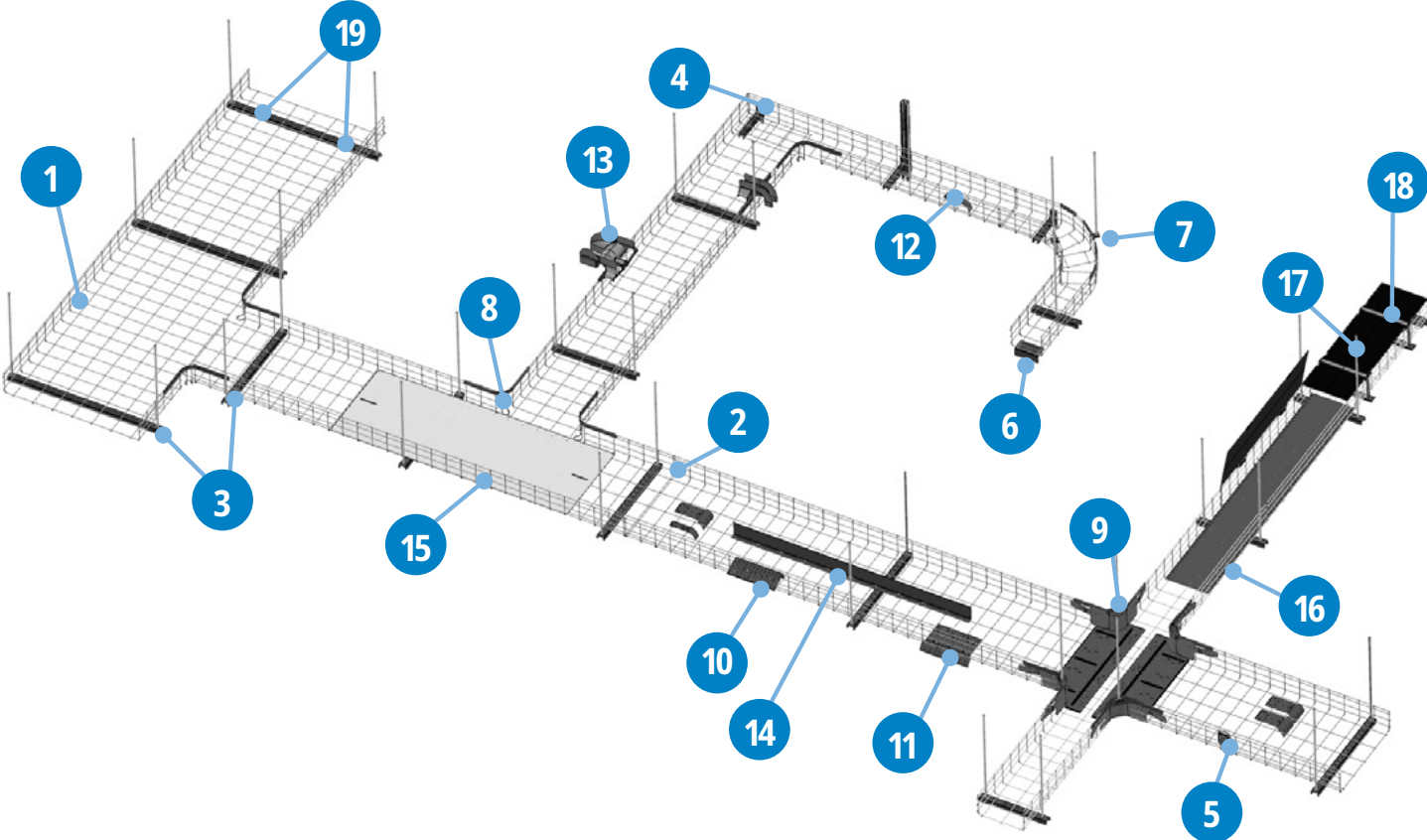
Durable, Lightweight Construction:	Greater strength-to-weight ratio due to larger wire gauges helps maintain better safe working loads than those in the market.
Grid pattern:	The larger wire mesh grid pattern provides greater bottom cable exit capacity, allowing greater amounts of cables to pass through grid openings without making any additional cuts, reducing installation time
T-Welded Safety Edge:	Meets safety specifications required by industry leaders, helping promote installer safety while providing cable protection simultaneously
Smooth Mounting Bracket Surfaces:	Infinite mounting positions across the width of the bracket allows for baskets to easily slide across brackets and into position without snags
Simplified Bonding:	Prepared masked pathway sections simplify bonding at splice connections.

APPLICATIONS

The Wire Basket Overhead Cable Tray Routing System is designed to route, manage and protect copper data cables, fiber optic cabling and power cables within data centers, connected buildings and industrial environments. The open wire mesh design allows for easy cable installation, airflow for cooling, and quick inspection or maintenance, making it especially valuable in high-density cabling setups.

Panduit Wire Basket Cable Tray Routing System

PRODUCT PATHWAY



Panduit Wire Basket Cable Tray Routing System

HOW TO ORDER

1. Choosing the basket size

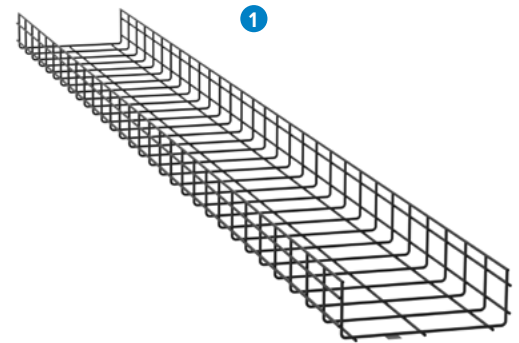
Part Number	Description
2" Basket	
PWB2x4**	Wire Basket 2"H x 4"W
PWB2x6**	Wire Basket 2"H x 6"W
PWB2x8**	Wire Basket 2"H x 8"W
PWB2x12**	Wire Basket 2"H x 12"W
PWB2x18**	Wire Basket 2"H x 18"W
PWB2x24**	Wire Basket 2"H x 24"W
PWB2x30**	Wire Basket 2"H x 30"W
PWB2x36**	Wire Basket 2"H x 36"W
4" Basket	
PWB4x4**	Wire Basket 4"H x 4"W
PWB4x6**	Wire Basket 4"H x 6"W
PWB4x8**	Wire Basket 4"H x 8"W
PWB4x12**	Wire Basket 4"H x 12"W
PWB4x18**	Wire Basket 4"H x 18"W
PWB4x24**	Wire Basket 4"H x 24"W
PWB4x30**	Wire Basket 4"H x 30"W
PWB4x36**	Wire Basket 4"H x 36"W
6" Basket	
PWB6x6**	Wire Basket 6"H x 6"W
PWB6x8**	Wire Basket 6"H x 8"W
PWB6x12**	Wire Basket 6"H x 12"W
PWB6x18**	Wire Basket 6"H x 18"W
PWB6x24**	Wire Basket 6"H x 24"W
PWB6x30**	Wire Basket 6"H x 30"W
PWB6x36**	Wire Basket 6"H x 36"W

** Shall be replaced with BL = Black, EZ = Electro Zinc or WH = White

2. Choosing a splice connection

Part Number	Description
Bolted Splice (50 Pieces)	
PWBSPLBL-L	Bolted Style Splice BL
PWBSPLEZ-L	Bolted Style Splice EZ
Push on Splice (50 Pieces)	
PWBPSBL-L	Push-On Style Splice, BL
PWBPSSEZ-L	Push-On Style Splice, EZ
Expansion Splice (30 Pieces)	
PWBFE**-.30	Expansion Splice Bar

** Shall be replaced with BL = Black, EZ = Electro Zinc or WH = White

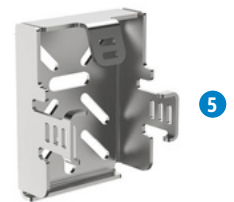


Panduit Wire Basket Cable Tray Routing System

HOW TO ORDER (CONTINUED)

3. Choosing a mounting option

Part Number	Description
Trapeze Bracket (2 Pieces)	
PWBTB4C**	Trapeze Bracket with Center Hole 4"
PWBTB6C**	Trapeze Bracket with Center Hole 6"
PWBTB8C**	Trapeze Bracket with Center Hole 8"
PWBTB12C**	Trapeze Bracket with Center Hole 12"
PWBTB18C**	Trapeze Bracket with Center Hole 18"
PWBTB24C**	Trapeze Bracket with Center Hole 24"
PWBTB30**	Trapeze Bracket 30"
PWBTB36**	Trapeze Bracket 36"
Cantilever Bracket (2 Pieces)	
PWBCB4**	Cantilever Bracket 4"
PWBCB6**	Cantilever Bracket 6"
PWBCLB8**	Cantilever Bracket 8"
PWBCLB12**	Cantilever Bracket 12"
PWBCLB18**	Cantilever Bracket 18"
PWBCLB24**	Cantilever Bracket 24"
Vertical Wall Mount (2 Pieces)	
PWBWMBV**	Vertical Wall Mount Bracket
Sidewall Mount Bracket (5 Pieces)	
PWBSWMBPG	Sidewall Mount Bracket
Termination Bracket (2 Pieces)	
PWBWMW**	Wide Wall Mount Termination Bracket
PWBWMN**	Narrow Wall Mount Termination Bracket
Strut (50 Pieces)	
PWBSCEZ	Strut Clip
Trapeze Hanging Clip (50 Pieces)	
PWBTSBEZ-L	Trapeze Hanging Clip
Raised Floor Mounting Bracket	
PWBUSB	Underfloor Pedestal Support Bracket



** Shall be replaced with either BL = Black, EZ = Electro Zinc, PG = Pre-Galvanized or WH = White

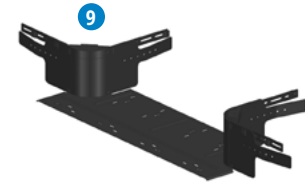
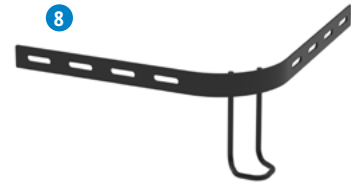
Panduit Wire Basket Cable Tray Routing System

HOW TO ORDER (CONTINUED)

4. Choosing an intersection

Part Number	Description
Radius Intersection (2 Pieces)	
PWBIB2**	Radius intersection 90 Brackets, 2" Height
PWBIB4**	Radius intersection 90 Brackets, 4" Height
PWBIB6**	Radius intersection 90 Brackets, 6" Height
Formed Tees	
PWBPF2xXX**	Formed Tee Fitting 2" Height x Basket Width
PWBPF4xXX**	Formed Tee Fitting 4" Height x Basket Width
PWBPF6xXX**	Formed Tee Fitting 6" Height x Basket Width

** Shall be replaced with either BL = Black, EZ = Electro Zinc, PG = Pre-Galvanized or WH = White
"XX" shall be replaced with XX = 4", 6", 8", 12", 18" or 24"



5. Choosing a cable exit

Part Number	Description
Drop Out Kit	
PWBDOK**	12" Drop Out Kit
Waterfall	
PBWFNR2**	Narrow Bottom Waterfall
PBWFWR2**	Wide Waterfall
Spillover	
PBSPJ2BL	Spillover Exit 2"
PBSPJ4BL	Spillover Exit 4"

** Shall be replaced with BL = Black, PG = Pre-Galvanized, WH = White

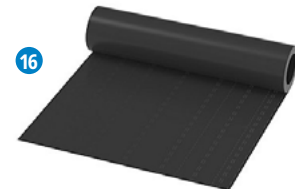


Panduit Wire Basket Cable Tray Routing System

HOW TO ORDER (CONTINUED)

6. Choose accessories

Part Number	Description
Divider Wall	
PWBDW2**	Divider Wall 2" Height
PWBDW4**	Divider Wall 4" Height
PWBDW6**	Divider Wall 6" Height
Metal Tray Liner	
PWBTL4**	Tray Liner 4" Wide
PWBTL6**	Tray Liner 6" Wide
PWBTL8**	Tray Liner 8" Wide
PWBTL12**	Tray Liner 12" Wide
PWBTL18**	Tray Liner 18" Wide
PWBTL24**	Tray Liner 24" Wide
Plastic Tray Liners	
PWBPTL4**	Plastic Tray Liner 4" Wide
PWBPTL6**	Plastic Tray Liner 6" Wide
PWBPTL8-2X4**	Plastic Tray Liner 8" Wide & 2" x 4" Formed
PWBPTL2X6**	Plastic Tray Liner 2" x 6" Formed
PWBPTL12**	Plastic Tray Liner 12" Wide
PWBPTL2X8-4X4**	Plastic Tray Liner 2" x 8" & 4" x 4" Formed
PWBPTL4X6**	Plastic Tray Liner 4" x 6" Formed
PWBPTL2X12X8**	Plastic Tray Liner 2" x 12" & 4" x 8" Formed
PWBPTL18-6X6**	Plastic Tray Liner 18" Wide & 6" x 6" Formed
PWBPTL4X12**	Plastic Tray Liner 4" x 12" Formed
PWBPTL6X8**	Plastic Tray Liner 6" x 8" Formed
PWBPTL2X18**	Plastic Tray Liner 2" x 18" Formed
PWBPTL24-6X12**	Plastic Tray Liner 24" Wide & 6" x 12" Formed
PWBPTL4X36-2**	Plastic Tray Liner 4" x 36" Formed
PWBPTL4X18**	Plastic Tray Liner 4" x 18" Formed
PWBPTL2X24**	Plastic Tray Liner 2" x 24" Formed
PWBPTL30-6X18**	Plastic Tray Liner 30" Wide & 6" x 18" Formed
PWBPTL4X24**	Plastic Tray Liner 4" x 24" Formed
PWBPTL2X30**	Plastic Tray Liner 2" x 30" Formed
PWBPTL36-6X24**	Plastic Tray Liner 36" Wide & 6" x 24" Formed



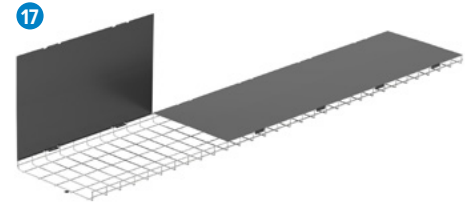
** Shall be replaced with either BL = Black, EZ = Electro Zinc, PG = Pre-Galvanized or WH = White

Panduit Wire Basket Cable Tray Routing System

HOW TO ORDER (CONTINUED)

6. Choose accessories (continued)

Part Number	Description
Metal Covers	
PWBCVR4**	Metal Cover 4" Wide
PWBCVR6**	Metal Cover 6" Wide
PWBCVR8**	Metal Cover 8" Wide
PWBCVR12**	Metal Cover 12" Wide
PWBCVR18**	Metal Cover 18" Wide
PWBCVR24**	Metal Cover 24" Wide
PWBCVR30**	Metal Cover 30" Wide
PWBCVR36**	Metal Cover 36" Wide



Tamper Resistant Cover Retention Strap

PWBCVRLCK2X4PG	Cover Retention Strap, 2" H x 4" W
PWBCVRLCK2X6PG	Cover Retention Strap, 2" H x 6" W
PWBCVRLCK2X8PG	Cover Retention Strap, 2" H x 8" W
PWBCVRLCK2X12PG	Cover Retention Strap, 2" H x 12" W
PWBCVRLCK2X18PG	Cover Retention Strap, 2" H x 18" W
PWBCVRLCK2X24PG	Cover Retention Strap, 2" H x 24" W
PWBCVRLCK2X30PG	Cover Retention Strap, 2" H x 30" W
PWBCVRLCK2X36PG	Cover Retention Strap, 2" H x 36" W
PWBCVRLCK4X4PG	Cover Retention Strap, 4" H x 4" W
PWBCVRLCK4X6PG	Cover Retention Strap, 4" H x 6" W
PWBCVRLCK4X8PG	Cover Retention Strap, 4" H x 8" W
PWBCVRLCK4X12PG	Cover Retention Strap, 4" H x 12" W
PWBCVRLCK4X18PG	Cover Retention Strap, 4" H x 18" W
PWBCVRLCK4X24PG	Cover Retention Strap, 4" H x 24" W
PWBCVRLCK4X30PG	Cover Retention Strap, 4" H x 30" W
PWBCVRLCK4X36PG	Cover Retention Strap, 4" H x 36" W
PWBCVRLCK6X6PG	Cover Retention Strap, 6" H x 6" W
PWBCVRLCK6X8PG	Cover Retention Strap, 6" H x 8" W
PWBCVRLCK6X12PG	Cover Retention Strap, 6" H x 12" W
PWBCVRLCK6X18PG	Cover Retention Strap, 6" H x 18" W
PWBCVRLCK6X24PG	Cover Retention Strap, 6" H x 24" W
PWBCVRLCK6X30PG	Cover Retention Strap, 6" H x 30" W
PWBCVRLCK6X36PG	Cover Retention Strap, 6" H x 36" W



** Shall be replaced with either BL = Black, EZ = Electro Zinc, PG = Pre-Galvanized or WH = White

Panduit Wire Basket Cable Tray Routing System

HOW TO ORDER (CONTINUED)

7. Hardware

Part Number	Description
C-CLIP (50 Pieces) (Termination Brackets, Sweeps Cantilever, Trapeze and Cantilever)	
PWBHK**-L	Hardware Kit, Clip

19

