

Title: MP 100 Printer Driver Installation**Purpose: Provide instructions for installing the driver for the MP 100 printer****Audience: This document is intended for users of Easy-Mark Plus, MP 100 printer and Panduit support staff.**

Procedure:

1. Click the link below to be able to download the drivers for our MP mobile printers:

<https://www.panduit.com/en/support/download-center/identification-software-firmware-and-printers.html>

2. Click on **MP100/MP300 Windows Printer Driver File** and download the .ZIP file.

MP Mobile Printers

The MP100 and MP300 mobile printers are uniquely equipped to produce high-quality printed labels for infrastructure identification in multiple applications. To ensure optimum product performance, along with the latest technology, software upgrades are readily available through our website.

[Easy-Mark ILabel App for iOS](#)

[Easy-Mark ILabel App for Android](#)

[Easy-Mark Network App for iOS](#)

[Easy-Mark Network App for Android](#)

[Latest Version of Easy-Mark Plus](#)

[Mobile Printer Product Bulletin](#)

[MP100 Quick Reference Card \(7 languages\)](#)

[MP300 Quick Reference Card \(7 languages\)](#)

[MP300 Operator's Manual \(12 languages\)](#)

[MP300 Firmware Upgrade Instructions](#)

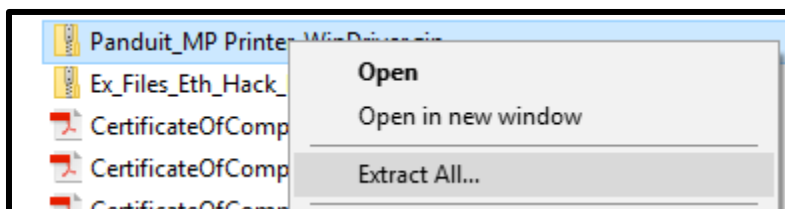
[MP300 Firmware \(download zip file - includes exe, firmware file, and instructions\)](#)

[MP100/MP300 Windows Printer Driver File](#)

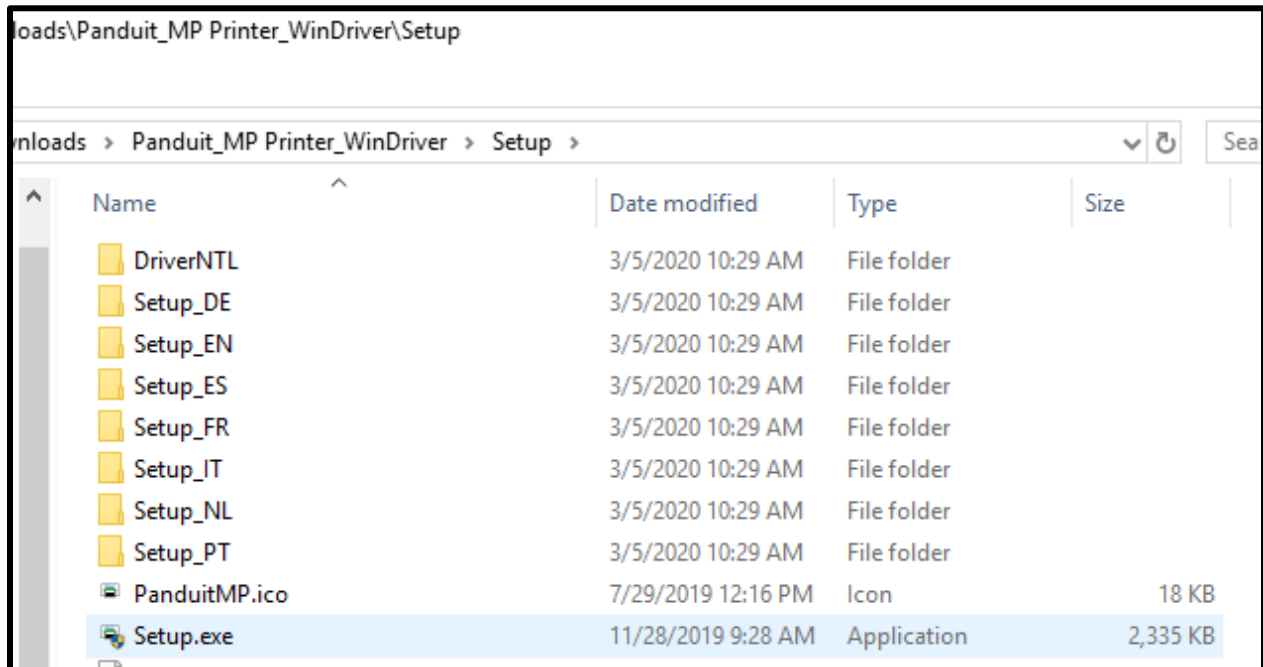
[MP300 Magnetic Attachment User's Guide](#)

[Important Safety Sheets](#)

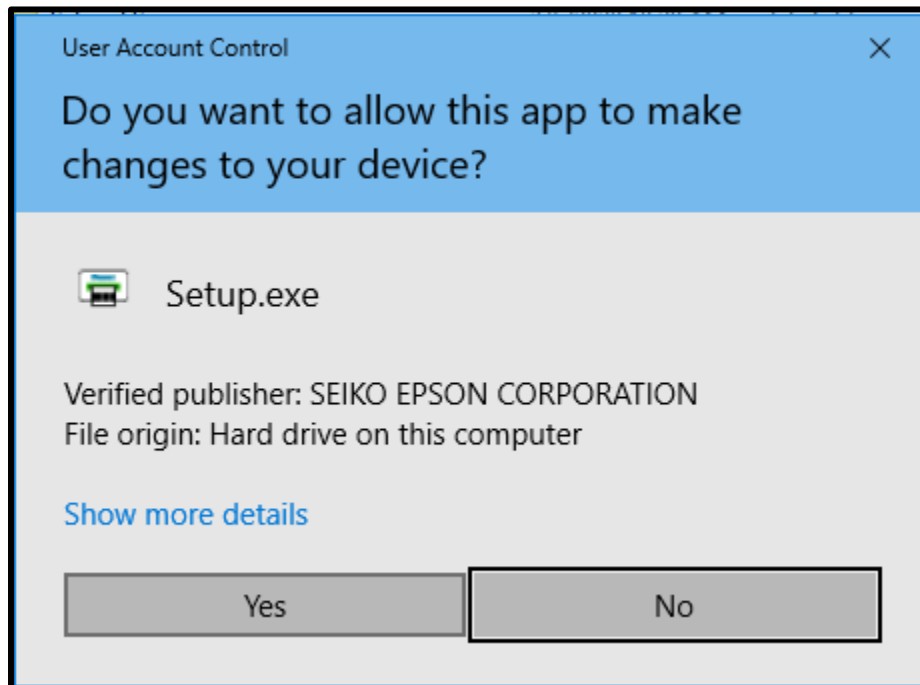
3. Extract all files to your computer.



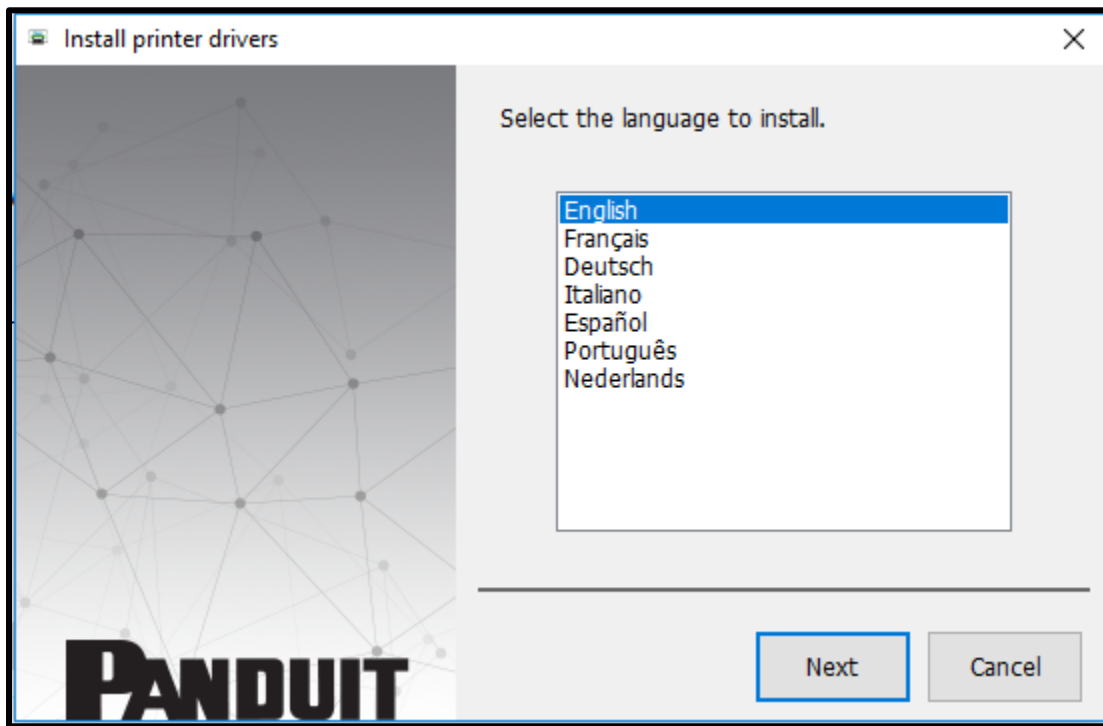
4. Once the files have been extracted, open the Setup folder and run the *Setup.exe* file.



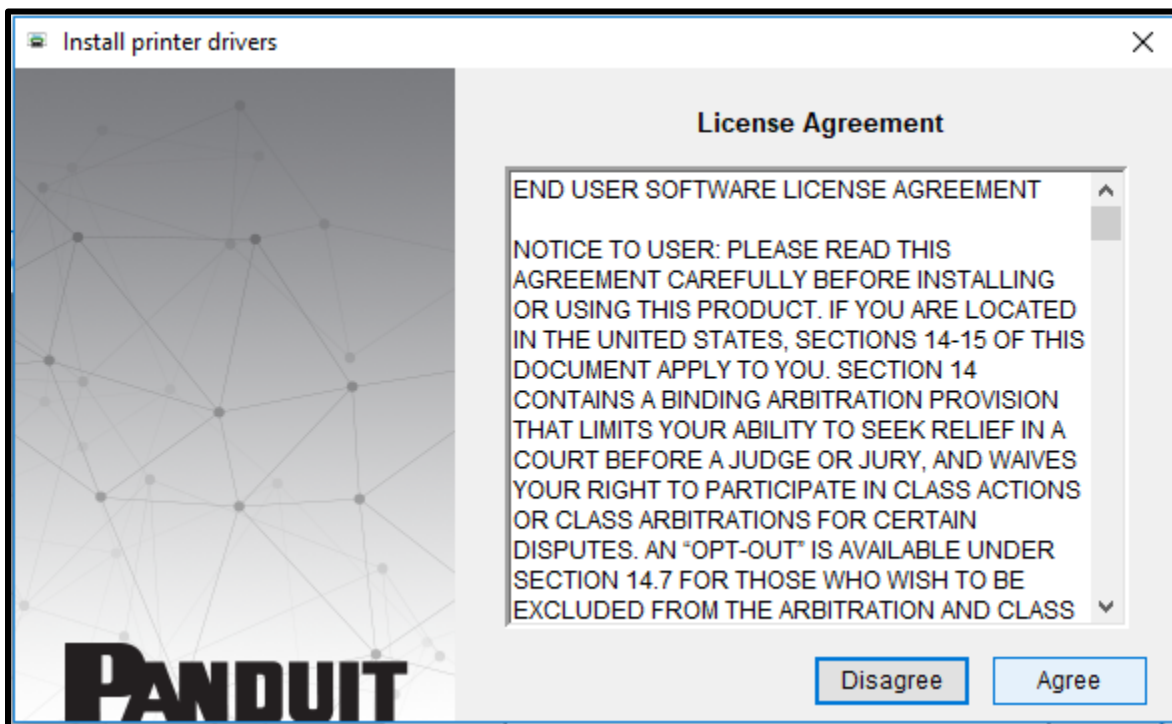
5. The system will ask if you want to allow the app to make changes. Click **Yes**.



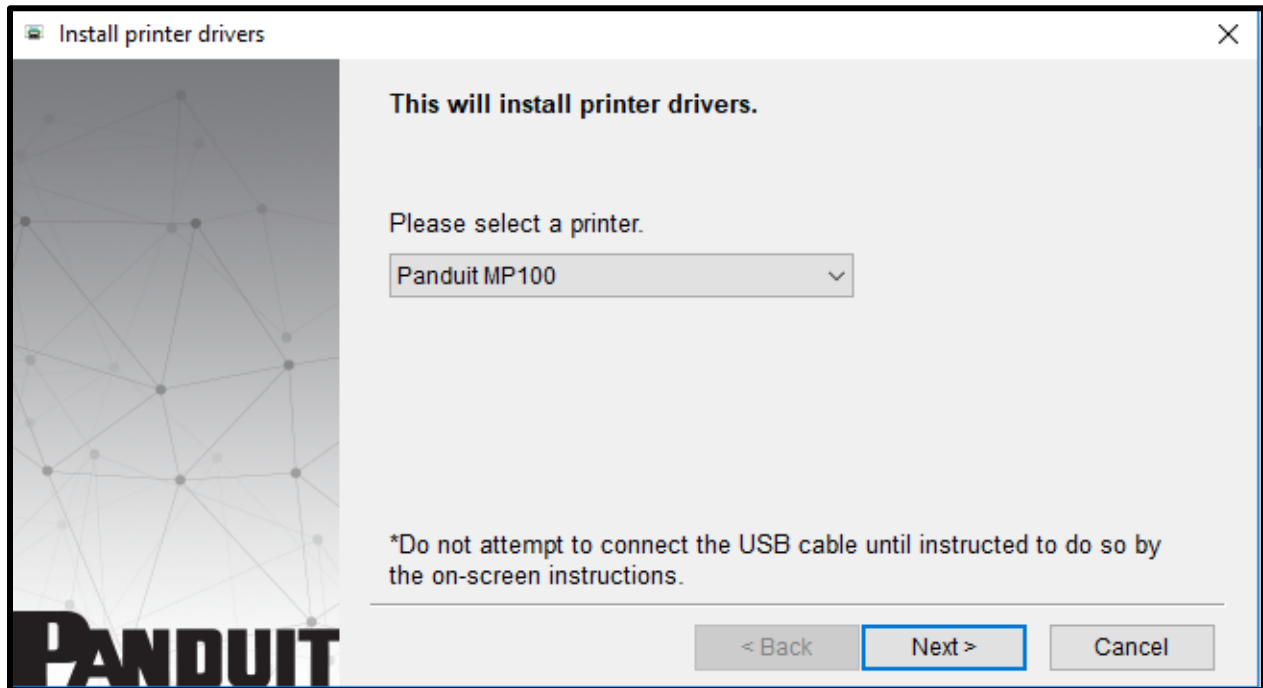
6. Select the preferred language for the installation. Then click **Next**.



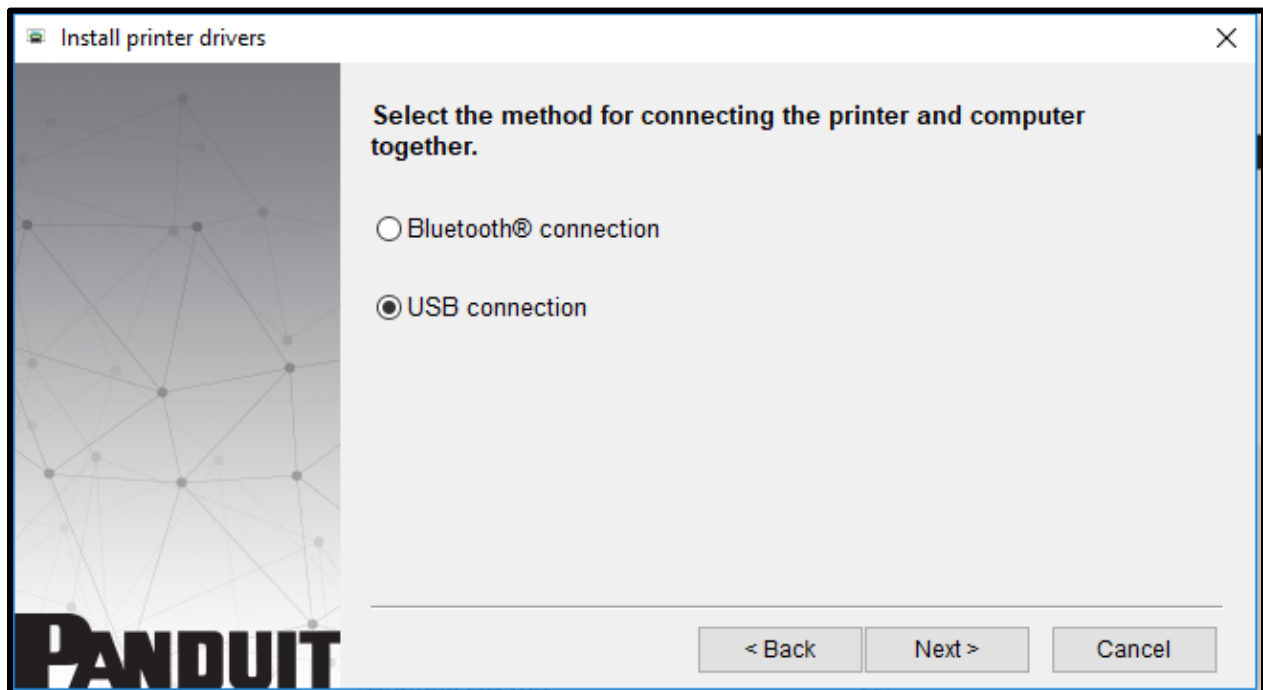
7. Accept the License Agreement.



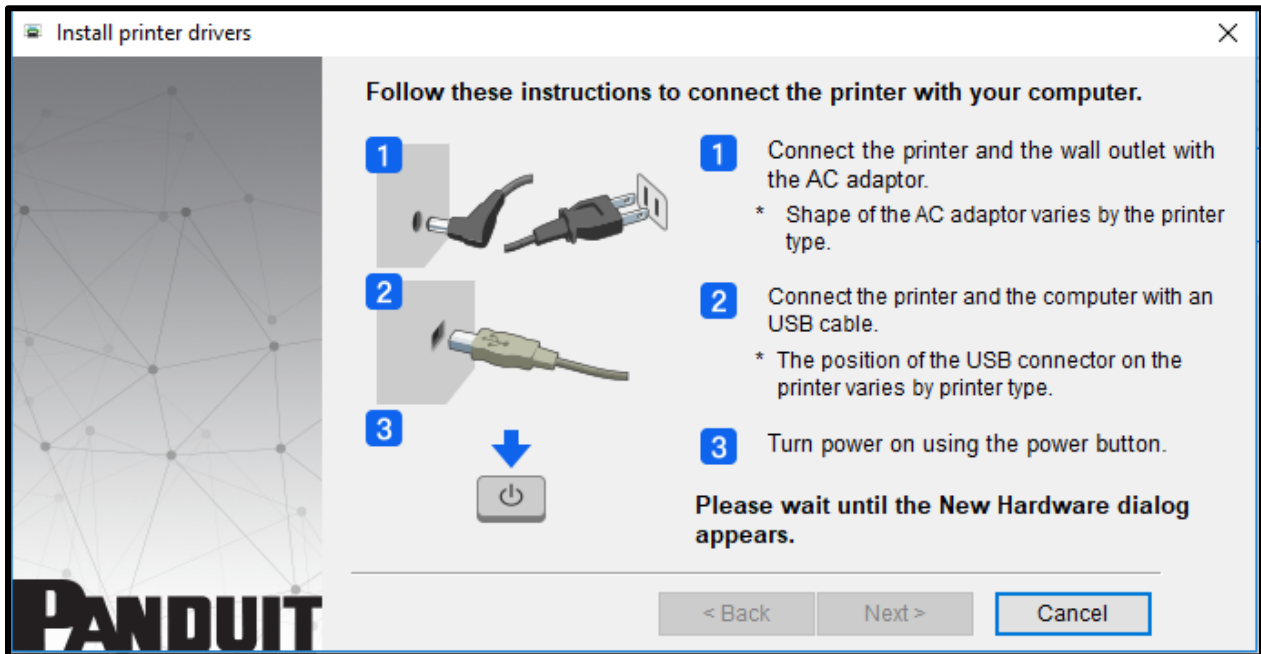
8. Select the **Panduit MP100** printer.



9. If you want to connect the printer via USB, select option **USB connection**.
Note: For Bluetooth connection, turn the BT on and pair the printer with your mobile phone or tablet.



10. Follow the on-screen instructions. Once the system detects the printer, click **Next>**.



11. Click **Finish** to complete the installation process.

