



© Panduit Corp. 2013

SETTING THE TDP4*HE PRINTER SPEED OR DARKNESS:

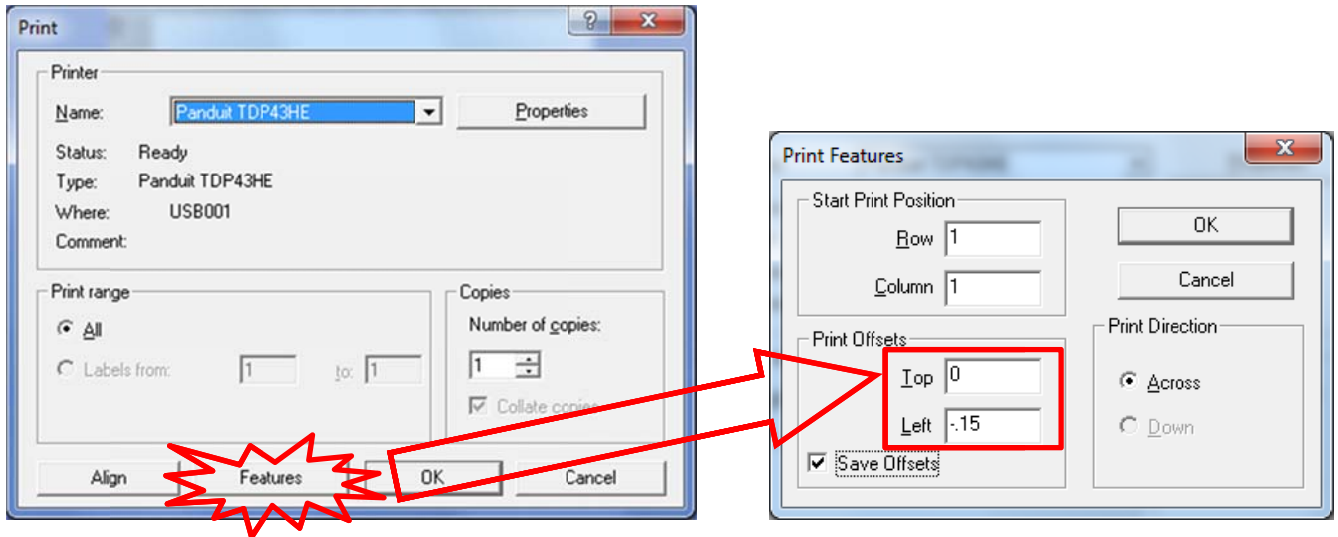
- 1) When preparing to print, click on “Properties”, to view the printer settings.
- 2) NOTE: Click on the ABOUT tab to retrieve current driver version.
- 3) In the OPTIONS tab, set SPEED and DARKNESS, according to the following Table.

Media Type	Suggested Ribbon Type	Suggested Ribbon Part Number	Printer Speed	Printer Darkness
Arc Flash Labels & Tape	Resin	RHER4BL	3	10
Component Labels, Non-adhesive Polyester	Resin	RHER4BL	4	10
Component Labels, Paper	Hybrid	RHEH4BL	3	10
Component Labels, Polyimide, Gloss White	Resin	RHER4BL	3	10
Component Labels, Polyimide, Matte Tan	Hybrid	RHEH4BL	4	12
Component Labels, Raised Panel	Resin	RHER4BL	4	8
	Resin	RHER4WH	4	8
Component Labels, Standard Polyester	Resin	RHER4BL	4	10
Component labels, Super-Tack Polyester	Resin	RHER4BL	4	12
	Resin	RHER4WH	4	12
Component labels, Tamper-Evident Polyester	Resin	RHER4BL	2	12
Component Labels, Tedlar	Resin	RHER4BL	4	12
Component Labels, Vinyl Cloth	Hybrid	RHEH4BL	4	9
Continuous Tape, Photoluminescent Polyester	Resin	RHER4BL	4	12
Continuous Tape, Polyolefin	Resin	RHER4BL	3	8
Continuous Tape, Reflective	Resin	RHER4BL	4	4
Continuous Tape, Standard Polyester	Resin	RHER4BL	4	10
Continuous Tape, Super-Tack Polyester	Resin	RHER4BL	4	8
Continuous Tape, Vinyl	Resin	RHER4BL	4	8
	Resin	RHER4WH	4	12
Heat Shrink, 1-sided Military grade	Hybrid	RHEH4BL	4	4
	Resin	RHER4WH	3	10
Heat Shrink, 2-sided Fluid Resistant	Resin	RHER4BL-C	4	10
Heat Shrink, 2-sided Halogen Free	Hybrid	RHEH4BL	4	10
Heat Shrink, 2-sided Military Grade	Hybrid	RHEH4BL	4	8
Marker Plates, Flame Retardant, Halogen Free	Resin	RHER4BL	4	12
Marker Plates, Flame Retardant, High Temp	Resin	RHER4BL-A	2	15
Marker Plates, Standard	Resin	RHER4BL	4	11
Wire Labels, Flag	Resin	RHER4BL	3	10
Wire Labels, Non-Laminated, Nylon Cloth	Resin	RHER4BL	4	8
Wire Labels, Non-Laminated, Vinyl Cloth	Hybrid	RHEH4BL	4	8
Wire Labels, Self-Laminating, PVDF	Hybrid	RHEH4BL	4	12
Wire Labels, Self-Laminating, Vinyl	Hybrid	RHEH4BL	4	10
	Resin	RHER4WH	2	12
Wire Labels, Turn-Tell	Hybrid	RHEH4BL	4	10

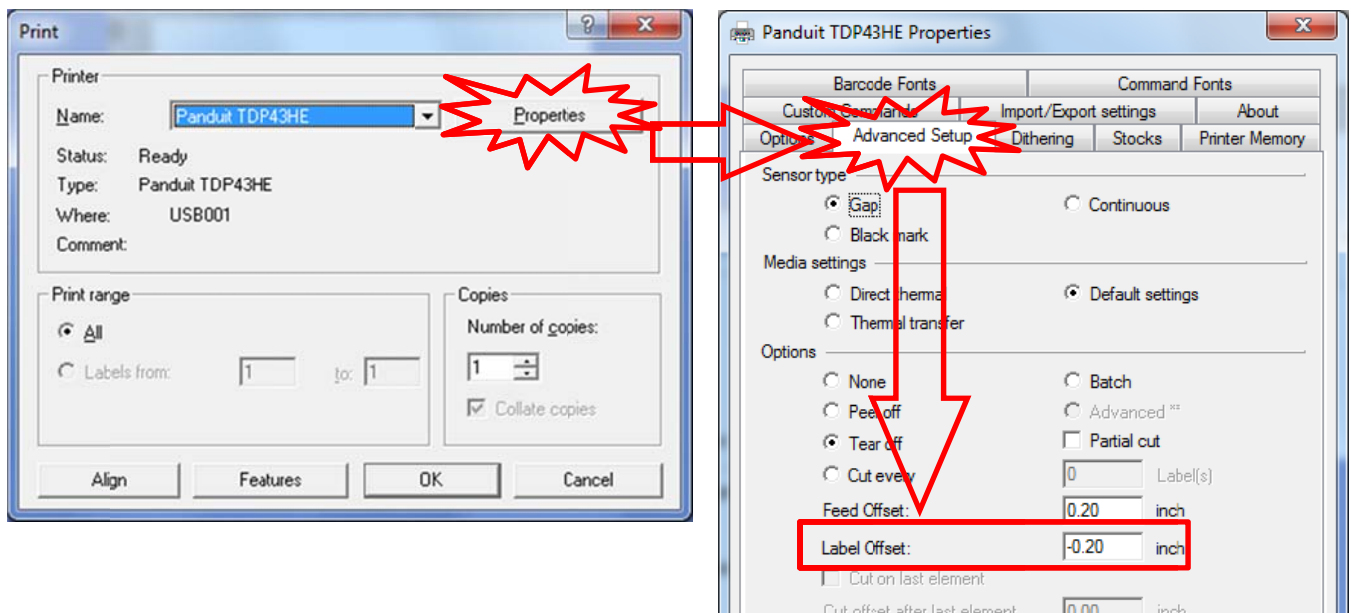


NOTES:

- 1) For most media types, the recommended Printhead Pressure Settings (see User Manual, Section 2.7.1) are as follows:
Liner width greater than 2" -----> Left = 1 Right = 1
Liner width less than 2" -----> Left = 5 Right = 1
- 2) With Black Single-sided Heat Shrink, the "MANUAL" Gap Calibration option (on-printer menus) must be used. See User Manual, Section 3.1.3-2, for detailed instructions.
- 3) For some print jobs, the user might wish to fine tune the placement of the print, on the actual label. For these occasions, we recommend the use of the "Features" button, located in the Easy-Mark print window (see below). In the "Print Offsets" section, a positive "Top" offset will shift the print down, and a negative offset will shift the print up. A positive "Left" offset will shift the print right, and a negative offset will shift the print left.

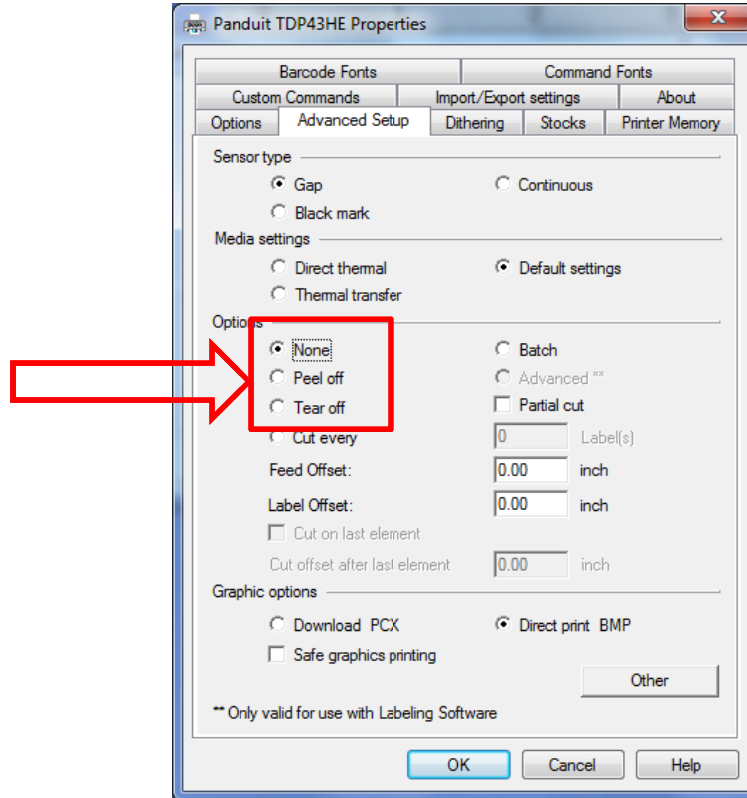


If the "Top" offset is not able to move the print far enough, vertically, there is another option. Instead, the user can adjust the "Label Offset" value, within the "Advanced Setup" tab of the printer "Properties":





- 4) Raised Panel labels, with a height less than 1", will cause a misprint (legend too low) on the first label of a print job. To correct this issue, the user can disable the post-print action (select "None" instead of "Tear off") within the Advanced Setup tab of the printer "Properties".



Website: www.panduit.com
Email: id-support@panduit.com

EU Website:
www.panduit.com/emea

EU Email:
emeatoolservicecenter@panduit.com



Technical Support:
Panduit Corp. • ID Products Division
Cumming, GA
Tel: 800-777-3300 • Fax: 708-532-1811

Panduit Europe • EMEA Service Center
Almelo, Netherlands
Tel: +31-546-580-452 • Fax: +31-546-580-441

Panduit Europe • West World Headquarters
Westgate, London
England Tel: 208-601-7200 • Fax: 208-601-7319