



© Panduit Corp. 2013

### **SETTING THE TDP4\*HE PRINTER SPEED OR DARKNESS:**

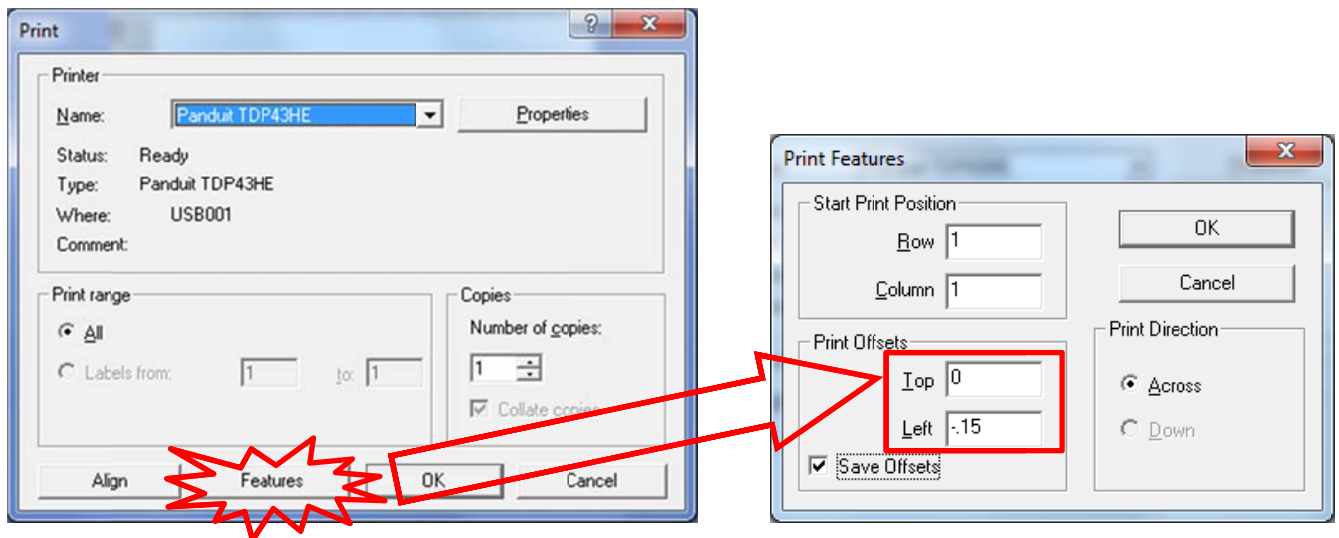
- 1) When preparing to print, click on “Properties”, to view the printer settings.
- 2) NOTE: Click on the ABOUT tab to retrieve current driver version.
- 3) In the OPTIONS tab, set SPEED and DARKNESS, according to the following Table.

| Media Type                                   | Suggested Ribbon Type | Suggested Ribbon Part Number | Printer Speed | Printer Darkness |
|--|-----------------------|------------------------------|---------------|------------------|
| Arc Flash Labels & Tape                      | Resin                 | RHER4BL                      | 3             | 10               |
| Component Labels, Non-adhesive Polyester     | Resin                 | RHER4BL                      | 4             | 10               |
| Component Labels, Paper                      | Hybrid                | RHEH4BL                      | 3             | 10               |
| Component Labels, Polyimide, Gloss White     | Resin                 | RHER4BL                      | 3             | 10               |
| Component Labels, Polyimide, Matte Tan       | Hybrid                | RHEH4BL                      | 4             | 12               |
| Component Labels, Raised Panel               | Resin                 | RHER4BL                      | 4             | 8                |
|  | Resin                 | RHER4WH                      | 4             | 8                |
| Component Labels, Standard Polyester         | Resin                 | RHER4BL                      | 4             | 10               |
| Component labels, Super-Tack Polyester       | Resin                 | RHER4BL                      | 4             | 12               |
|  | Resin                 | RHER4WH                      | 4             | 12               |
| Component labels, Tamper-Evident Polyester   | Resin                 | RHER4BL                      | 2             | 12               |
| Component Labels, Tedlar                     | Resin                 | RHER4BL                      | 4             | 12               |
| Component Labels, Vinyl Cloth                | Hybrid                | RHEH4BL                      | 4             | 9                |
| Continuous Tape, Photoluminescent Polyester  | Resin                 | RHER4BL                      | 4             | 12               |
| Continuous Tape, Polyolefin                  | Resin                 | RHER4BL                      | 3             | 8                |
| Continuous Tape, Reflective                  | Resin                 | RHER4BL                      | 4             | 4                |
| Continuous Tape, Standard Polyester          | Resin                 | RHER4BL                      | 4             | 10               |
| Continuous Tape, Super-Tack Polyester        | Resin                 | RHER4BL                      | 4             | 8                |
| Continuous Tape, Vinyl                       | Resin                 | RHER4BL                      | 4             | 8                |
|  | Resin                 | RHER4WH                      | 4             | 12               |
| Heat Shrink, 1-sided Military grade          | Hybrid                | RHEH4BL                      | 4             | 4                |
|  | Resin                 | RHER4WH                      | 3             | 10               |
| Heat Shrink, 2-sided Fluid Resistant         | Resin                 | RHER4BL-C                    | 4             | 10               |
| Heat Shrink, 2-sided Halogen Free            | Hybrid                | RHEH4BL                      | 4             | 10               |
| Heat Shrink, 2-sided Military Grade          | Hybrid                | RHEH4BL                      | 4             | 8                |
| Marker Plates, Flame Retardant, Halogen Free | Resin                 | RHER4BL                      | 4             | 12               |
| Marker Plates, Flame Retardant, High Temp    | Resin                 | RHER4BL-A                    | 2             | 15               |
| Marker Plates, Standard                      | Resin                 | RHER4BL                      | 4             | 11               |
| Wire Labels, Flag                            | Resin                 | RHER4BL                      | 3             | 10               |
| Wire Labels, Non-Laminated, Nylon Cloth      | Resin                 | RHER4BL                      | 4             | 8                |
| Wire Labels, Non-Laminated, Vinyl Cloth      | Hybrid                | RHEH4BL                      | 4             | 8                |
| Wire Labels, Self-Laminating, PVDF           | Hybrid                | RHEH4BL                      | 4             | 12               |
| Wire Labels, Self-Laminating, Vinyl          | Hybrid                | RHEH4BL                      | 4             | 10               |
|  | Resin                 | RHER4WH                      | 2             | 12               |
| Wire Labels, Turn-Tell                       | Hybrid                | RHEH4BL                      | 4             | 10               |

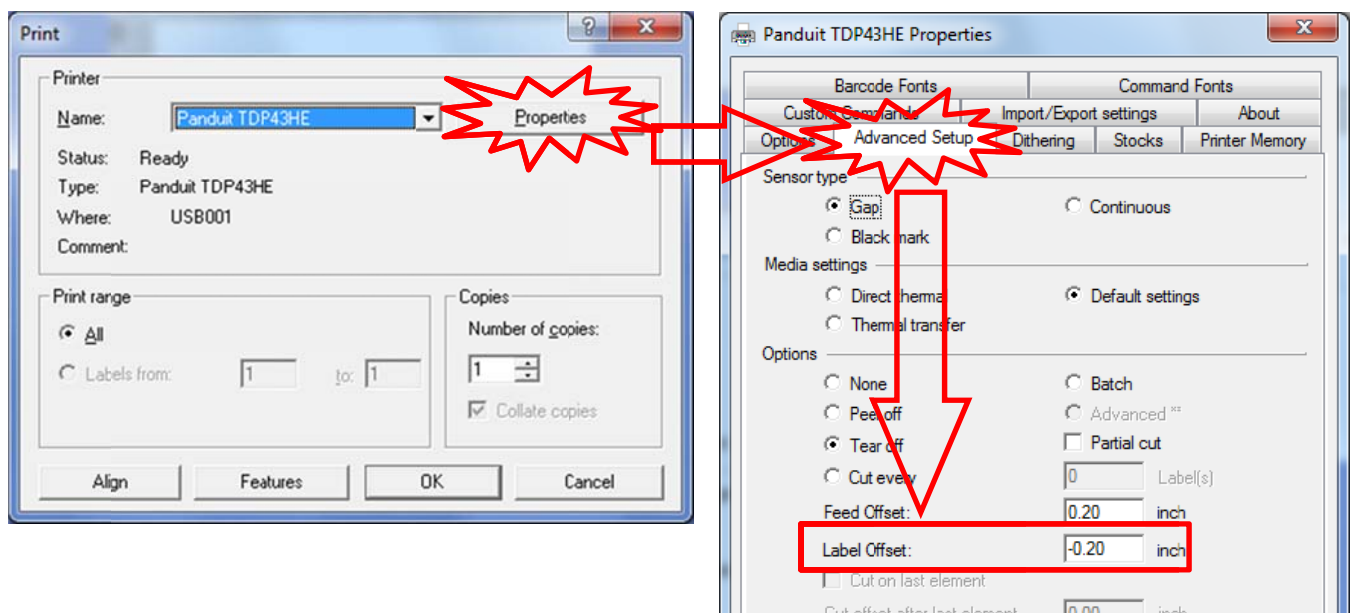


### NOTES:

- 1) For most media types, the recommended Printhead Pressure Settings (see User Manual, Section 2.7.1) are as follows:  
Liner width greater than 2" -----> Left = 1 Right = 1  
Liner width less than 2" -----> Left = 5 Right = 1
- 2) With Black Single-sided Heat Shrink, the "MANUAL" Gap Calibration option (on-printer menus) must be used. See User Manual, Section 3.1.3-2, for detailed instructions.
- 3) For some print jobs, the user might wish to fine tune the placement of the print, on the actual label. For these occasions, we recommend the use of the "Features" button, located in the Easy-Mark print window (see below). In the "Print Offsets" section, a positive "Top" offset will shift the print down, and a negative offset will shift the print up. A positive "Left" offset will shift the print right, and a negative offset will shift the print left.

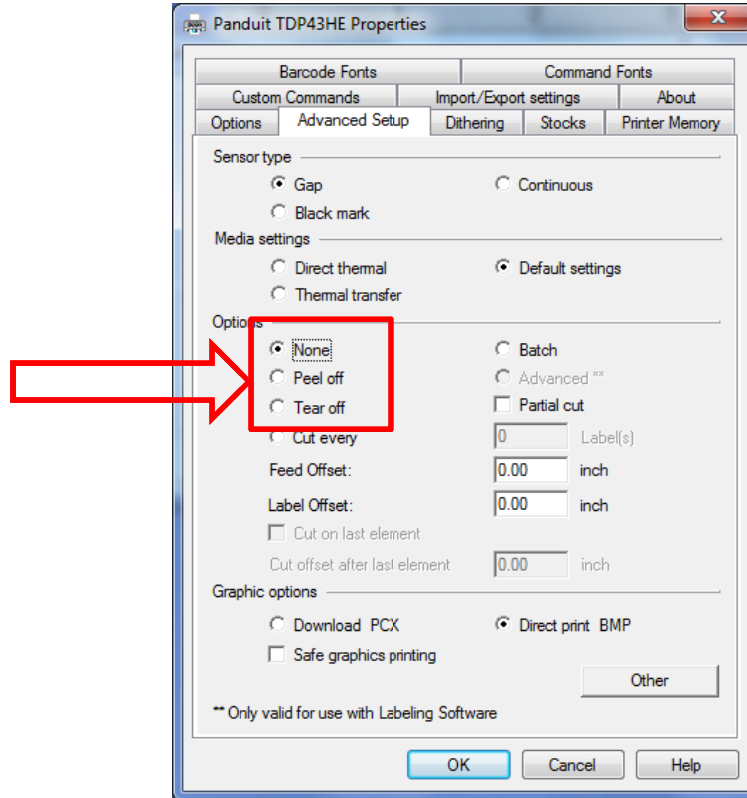


If the "Top" offset is not able to move the print far enough, vertically, there is another option. Instead, the user can adjust the "Label Offset" value, within the "Advanced Setup" tab of the printer "Properties":





- 4) Raised Panel labels, with a height less than 1", will cause a misprint (legend too low) on the first label of a print job. To correct this issue, the user can disable the post-print action (select "None" instead of "Tear off") within the Advanced Setup tab of the printer "Properties".



Website: [www.panduit.com](http://www.panduit.com)  
Email: [id-support@panduit.com](mailto:id-support@panduit.com)

EU Website:  
[www.panduit.com/emea](http://www.panduit.com/emea)

EU Email:  
[emeatoolservicecenter@panduit.com](mailto:emeatoolservicecenter@panduit.com)



Technical Support:  
Panduit Corp. • ID Products Division  
Cumming, GA  
Tel: 800-777-3300 • Fax: 708-532-1811

Panduit Europe • EMEA Service Center  
Almelo, Netherlands  
Tel: +31-546-580-452 • Fax: +31-546-580-441

Panduit Europe • West World Headquarters  
Westgate, London  
England Tel: 208-601-7200 • Fax: 208-601-7319