



## Program Description

The *Panduit Design Tool for Visio* is a software package developed to run in conjunction with Microsoft Visio 2010 through 2016. The Software allows the user to create a 2-dimensional layout using Panduit's *Data Communication*, *Telecommunications* and *Cabler Routing* products. Once a design is complete, a Bill of Material may be generated.

The Panduit components included in the Visio stencils are Racks, *Net-Access*<sup>™</sup> Cabinets, Aisle Containment, Cable Management, Copper Modules, Fiber Adapters, Copper and Fiber Patch Panels, Enclosures, *Managed Network Systems*, *PanZone*<sup>®</sup>, *QUICKNET*<sup>™</sup>, Punch-down Products, Wall Mount Products, Top Views, Shielded Products, Wiring Accessories, Wyr-Grid<sup>®</sup>, Raised-Under Floor (new *Cool Boot*<sup>™</sup>), *Fiber-Duct*<sup>™</sup> 2x2 and 4x4 as well as *FiberRunner*<sup>™</sup> 2x2, 4x4, 6x4, 12x4 and 24x4.

## Features

The *Panduit Design Tool for Visio* v6.0 provides many features that aid in the creation of a fiber routing, telecommunications room or data center layout, including:

- 2D shapes of product lines mentioned above.
- Complete front views of Data Center / Telecommunications Room products.
- Top views of racks, vertical cable mgmt, cabinets, phantom cabinets and ladder rack.
- Complete top, front and right views for *Fiber-Duct*<sup>™</sup>, *FiberRunner*<sup>™</sup>, Raised-Under Floor, and *PanZone*<sup>®</sup>.
- Easy to use menus.
- Drag and drop insertion capabilities.
- Fill calculator / Product recommendation tool for *FiberRunner*<sup>™</sup>/*Fiber-Duct*<sup>™</sup> and Vertical Cable Management Products.
- Accessories and Cable selection dialogs.
- Bill of Material generator.
- Link to Panduit site for partner's web sites.
- Dialog to auto-populate the blank patch panels with jacks/adapters.
- Dialog to auto-populate the racks, panels and panel ports with labels.
- The Panduit menu is now available in the Visio Ribbon interface.

## Software Requirements

- Microsoft Visio 2010 or later installed. Visio versions 2000 through 2007 are not supported, although the Panduit shapes may be usable.
- Microsoft .NET Framework 4.0
- Windows Installer 2.0 or later.
- Microsoft Excel 2010 or later installed (optional).

Note: If your computer has automatic updates enabled, the latest versions of the **.NET Framework** and **Windows Installer** should already be installed. If not, use the Microsoft Update site (<http://update.microsoft.com>) to get the latest versions. These components were not included in the download for the Panduit Design Tool install program in order to reduce the MSI file size.

## System Requirements

- PC with 500 MHz or higher processor for Visio 2010.
- PC with 1 GHz or higher processor for Visio 2013 and Visio 2016.
- All other system requirements are based on the version of Visio you are running. This info is available on <http://www.microsoft.com>.
- CD-ROM drive.
- 1280 x 800 or higher-resolution monitor
- The Panduit Visio Design Tool requires hard disk space of 135MB for templates, stencils, and support files

## Installation Instructions

From the Web:

1. Uninstall any previous versions of the Panduit Design Tool for Visio.
2. Go to [www.panduit.com](http://www.panduit.com)
3. Select "**Support**"
4. Select "**Design Tools**"
5. Under "**Data Center Design Tools**", select the version of the tool based on the version of Visio you have on your PC.
6. Fill out the registration if it appears. (If registration has previously been completed, you will go straight to a dialog box.)
7. A dialog box appears to save the tool to a specific location.
8. Click **Save** and choose the location for the tool, either on your PC or your network.
9. In Windows Explorer, locate the .msi file saved in step 8 and double-click it.

## New Features

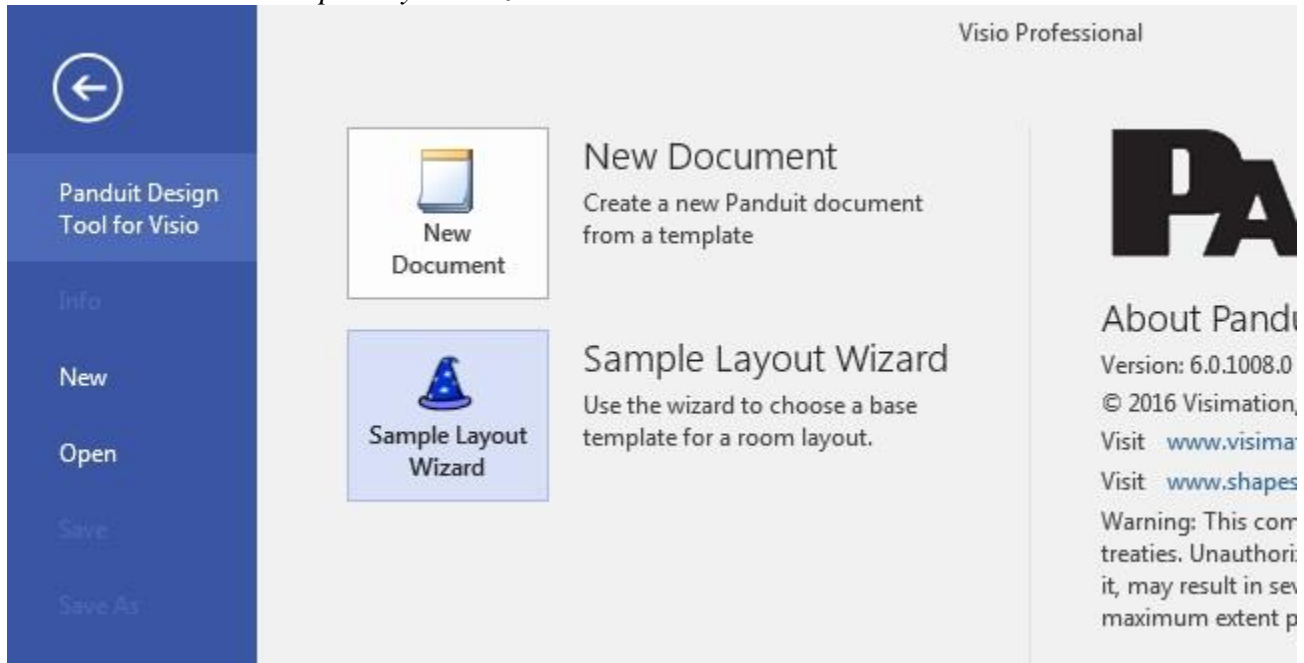
This release of the *Panduit Data Center Design Tool for Visio* includes the following new features:

- New *Data Center* solution stencils:
  - Updated Wyr-Grid® Products
  - Universal Aisle Containment
- Support for Visio versions 2010 through 2016.
- Support for 32-bit and 64-bit versions of Visio.
- The Panduit menu is now part of the Ribbon interface.










## Using the Panduit Templates

Panduit Design  
Tool for Visio

The Design Tool will create a "Panduit Design Tool for Visio" entry in the "backstage" area of Visio. You can get to the "backstage" area by clicking "Open Other Drawings" when Visio first starts, or by clicking the File tab. If you select this, you will see the *New Document* and *Sample Layout Wizard* icons.



If you select *New Document*, you can select a Panduit template of the appropriate product line for the desired installation layout.

Name	Date modified	Type	Size
 PanDC_M.vst	4/26/2016 2:36 PM	Microsoft Visio 20...	12 KB
 PanDC_US.vst	4/26/2016 2:36 PM	Microsoft Visio 20...	12 KB
 PFD2x2.vst	4/26/2016 2:36 PM	Microsoft Visio 20...	11 KB
 PFD4x4.vst	4/26/2016 2:36 PM	Microsoft Visio 20...	11 KB
 PFR2x2.vst	4/26/2016 2:36 PM	Microsoft Visio 20...	11 KB
 PFR4x4.vst	4/26/2016 2:36 PM	Microsoft Visio 20...	11 KB
 PFR6x4.vst	4/26/2016 2:36 PM	Microsoft Visio 20...	11 KB
 PFR12x4.vst	4/26/2016 2:36 PM	Microsoft Visio 20...	11 KB
 PFR24x4.vst	4/26/2016 2:36 PM	Microsoft Visio 20...	11 KB

The templates you can choose from are described as follows:

PanDC\_M.vst - Datacenter template, Metric units

PanDC\_US.vst - Datacenter template, US (Imperial) units

PFD2x2.vst - 2X2 Fiber-Duct template

PFD4x4.vst - 4X4 Fiber-Duct template

PFR2x2.vst - 2X2 FiberRunner template

PFR4x4.vst - 4X4 FiberRunner template

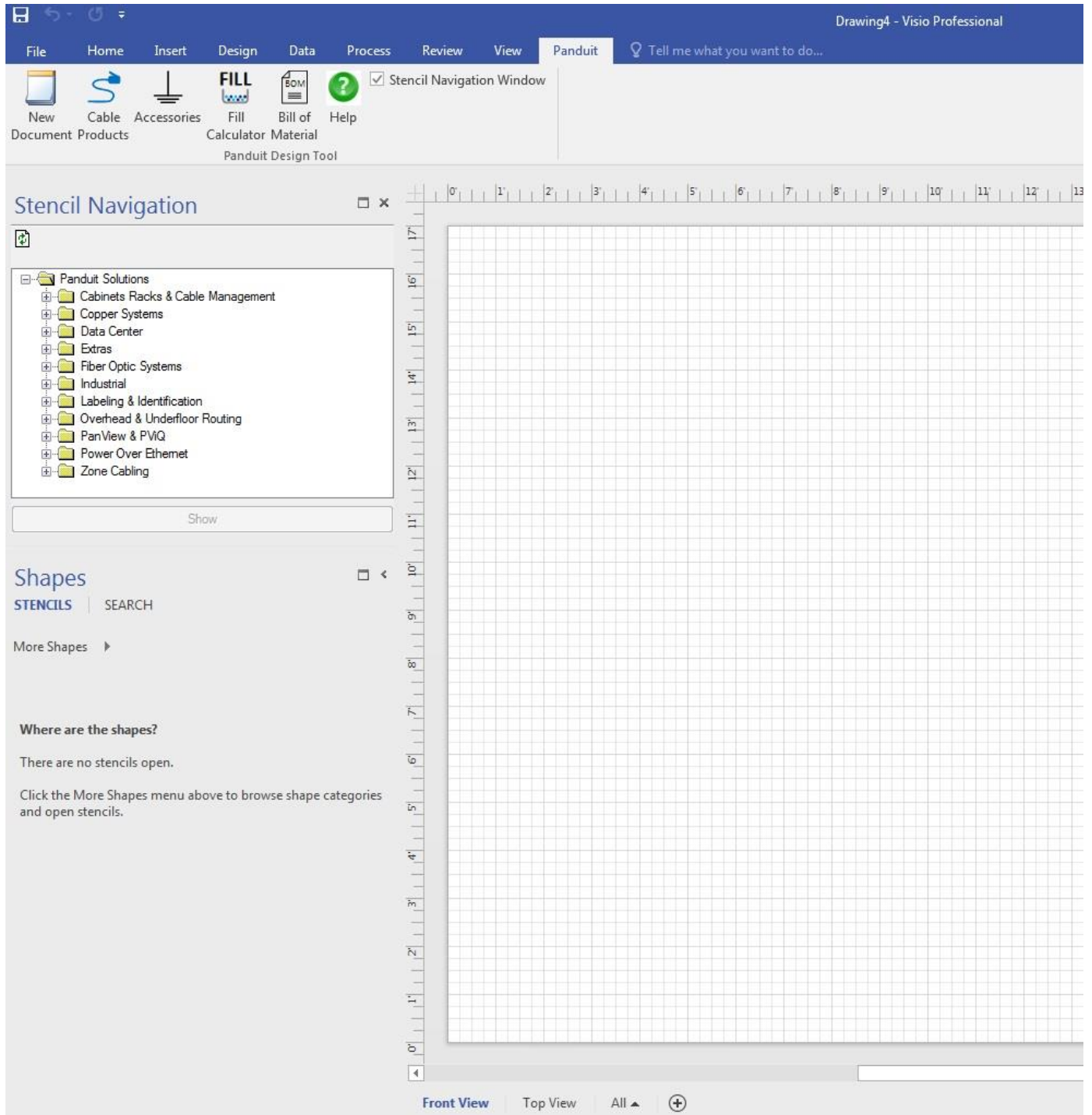
PFR6x4.vst - 6X4 FiberRunner template

PFR12x4.vst - 12X4 FiberRunner template

PFR24x4.vst - 24X4 FiberRunner template

# Panduit FiberRunner and Fiber-Duct Templates

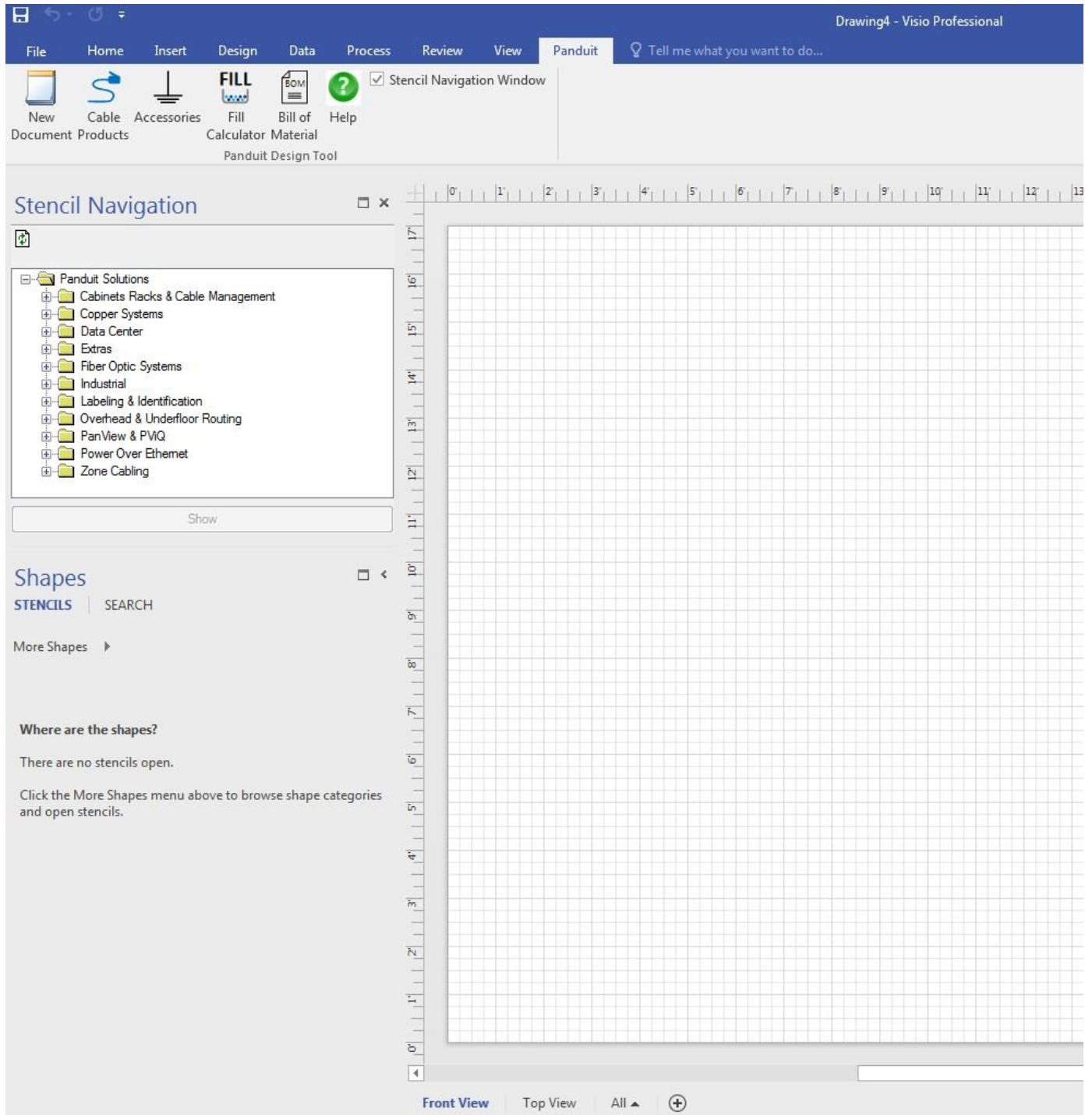
Once the *FiberRunner*<sup>™</sup> or *Fiber-Duct*<sup>™</sup> templates have successfully opened the user will notice there is a *Stencil Navigation* window, similar to Explorer, by which to open various stencils in this template and other Panduit templates, the Panduit menu item in the Ribbon interface, and a blank drawing page ready for use.



The drawing page is defaulted to Architectural 1/2" - 1' drawing scale with the page size at Legal. If a different scale is needed, this can be changed by clicking **Design, Page Setup, Drawing Scale**. Multiple pages can be inserted and set to whatever scale is needed. All of the Panduit geometry has been created with the snap point locations predetermined for ease of use. Finally, by simply utilizing Visio's drag and drop feature, a fiber routing layout can easily be created.

# Panduit Data Center Templates

Once one of the Data Center templates (PanDC\_M.vst or PanDC\_US.vst) have been successfully opened the user will notice a *Stencil Navigation* window, similar to Explorer, by which to open various stencils in this template and other Panduit templates, the Panduit menu item in the Ribbon interface, and a blank drawing page ready for use.





The two drawing pages will default to the following:

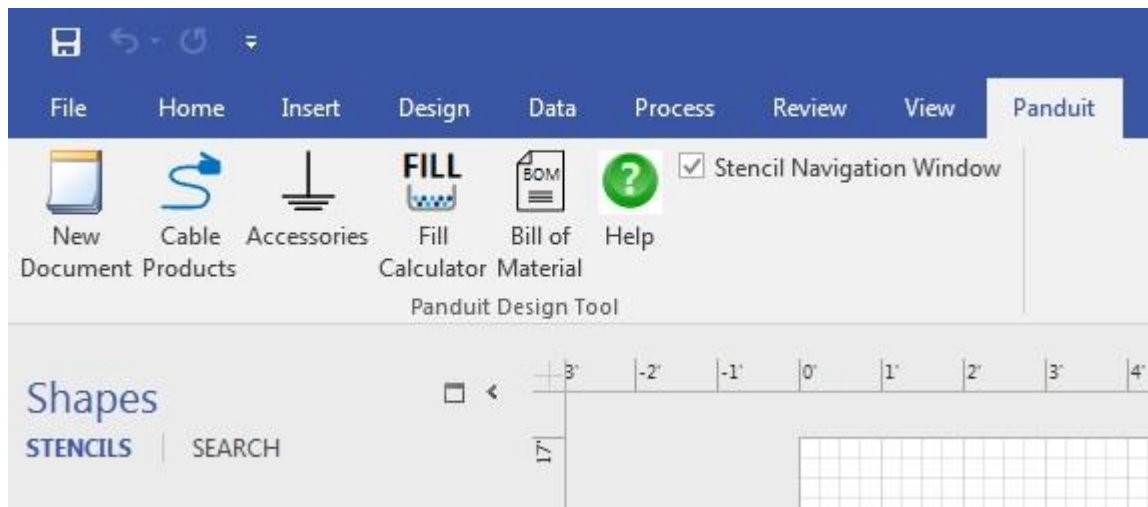
- Front View - this view is set to Architectural 1/2" - 1' with the page size at Legal. This allows for detailing 2 rows of approximately 8 racks with cable management.
- Top View - this view is set to Architectural 1/4" - 1' with the page size at 36" x 24". This allows for laying out an entire data center room.

If a different scale is needed, this can be changed by clicking **Design, Page Setup, Drawing Scale**. Multiple pages can be inserted and set to whatever scale is needed. All of the Panduit geometry has been created with the snap point locations predetermined for ease of use. Finally, by simply utilizing Visio's drag and drop feature, a Data Center layout can easily be created. A metric template can also be selected which has similar settings for drawing scale and page layout as mentioned above.

## Panduit Menu Options

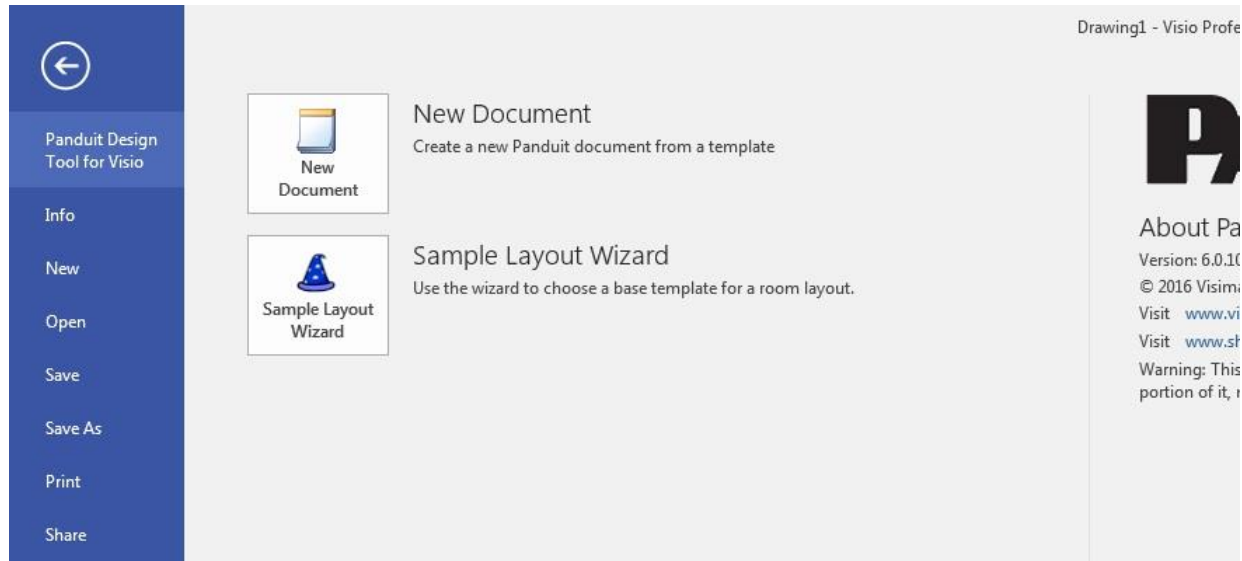
You will notice that **Panduit** is now an item under in the Visio ribbon area. By selecting Panduit in the Ribbon, you will see the following options:

- **New Document** - a dialog will display the templates you can select to create a new drawing.
- **Cable Products** - displays the Cable Products dialog.
- **Accessories** - displays the Accessories dialog.
- **Fill-Calculator** - displays the Fill Calculator wizard dialog.
- **Bill of Material** - displays the dialog to start the BOM generation process.
- **Help** - displays the help file (this document).
- **Stencil Navigation** - checking this option will turn on the Panduit stencil navigation window, unchecking it will only display the stencil that is active.

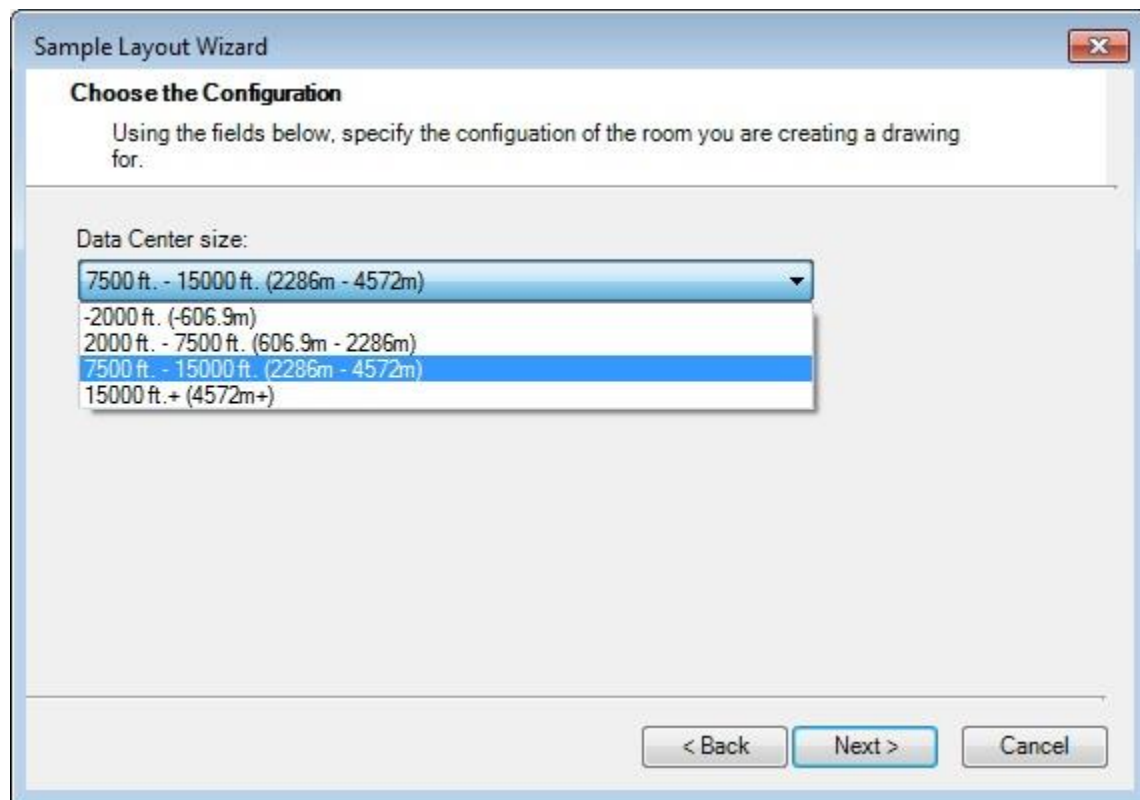


## Using the Sample Layout Wizard

Another way to get started is by selecting the Panduit menu option and using the **Sample Layout wizard**. Click File > Panduit Design Tool for Visio > Sample Layout Wizard to start it.



As you follow along with the wizard, you can select from 4 different data center room sizes for a template to start with. These templates will give the user a top view along with a front view of the MDA (main distribution area) and the HDA (horizontal distribution area).



Once the layout is displayed, the user can add to, delete and modify the layout as they see fit. It is a guide or a place to start with a data center layout.

Drawing2 - Visio Professional Phil Hines

File Home Insert Design Data Process Review View Panduit Tell me what you want to do

Cut Copy Paste Format Painter Clipboard

Calibri 12pt. Font Paragraph Tools Shape Styles Arrange Editing

Pointer Tool Connector A Text Quick Styles Line Effects Align Position Change Shape

### Stencil Navigation

- Panduit Solutions
  - Cabinets Racks & Cable Management
  - Copper Systems
  - Data Center
  - Extras
  - Fiber Optic Systems
  - Industrial
  - Labeling & Identification
  - Overhead & Underfloor Routing
  - PanView & PVIQ
  - Power Over Ethernet
  - Zone Cabling

Show

### Shapes

STENCILS | SEARCH

More Shapes

Where are the shapes?  
There are no stencils open.  
Click the More Shapes menu above to browse shape categories and open stencils.

Top View HDA Front View MDA Front View All +

Page 1 of 3 English (United States) 20%

Drawing2 - Visio Professional Phil Hines

File Home Insert Design Data Process Review View Panduit Tell me what you want to do

Cut Copy Paste Format Painter Clipboard

Calibri 12pt. Font

Paragraph

Pointer Tool Connector A Text Tools

Fill Line Quick Styles Effects Shape Styles

Align Position Arrange

Change Shape Editing

### Stencil Navigation

- Panduit Solutions
  - Cabinets Racks & Cable Management
  - Copper Systems
  - Data Center
  - Extras
  - Fiber Optic Systems
  - Industrial
  - Labeling & Identification
  - Overhead & Underfloor Routing
  - PanView & PVIQ
  - Power Over Ethernet
  - Zone Cabling

Show

### Shapes

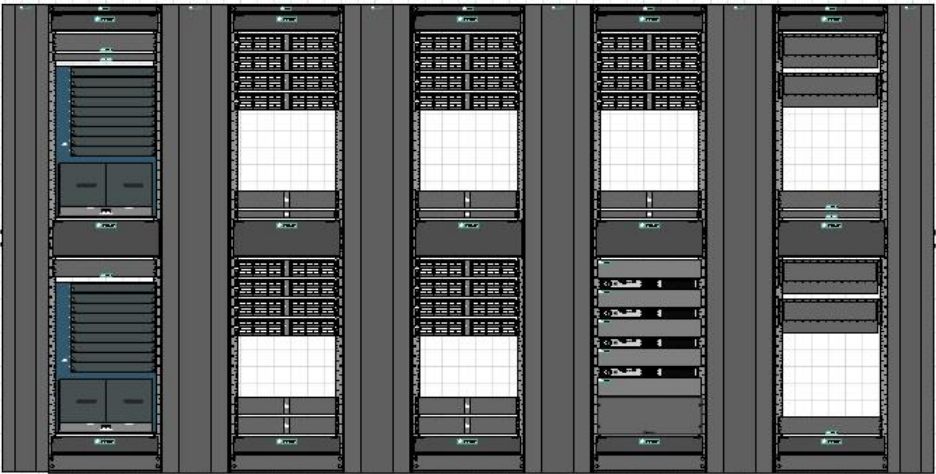
STENCILS | SEARCH

More Shapes ▶

**Where are the shapes?**

There are no stencils open.

Click the More Shapes menu above to browse shape categories and open stencils.

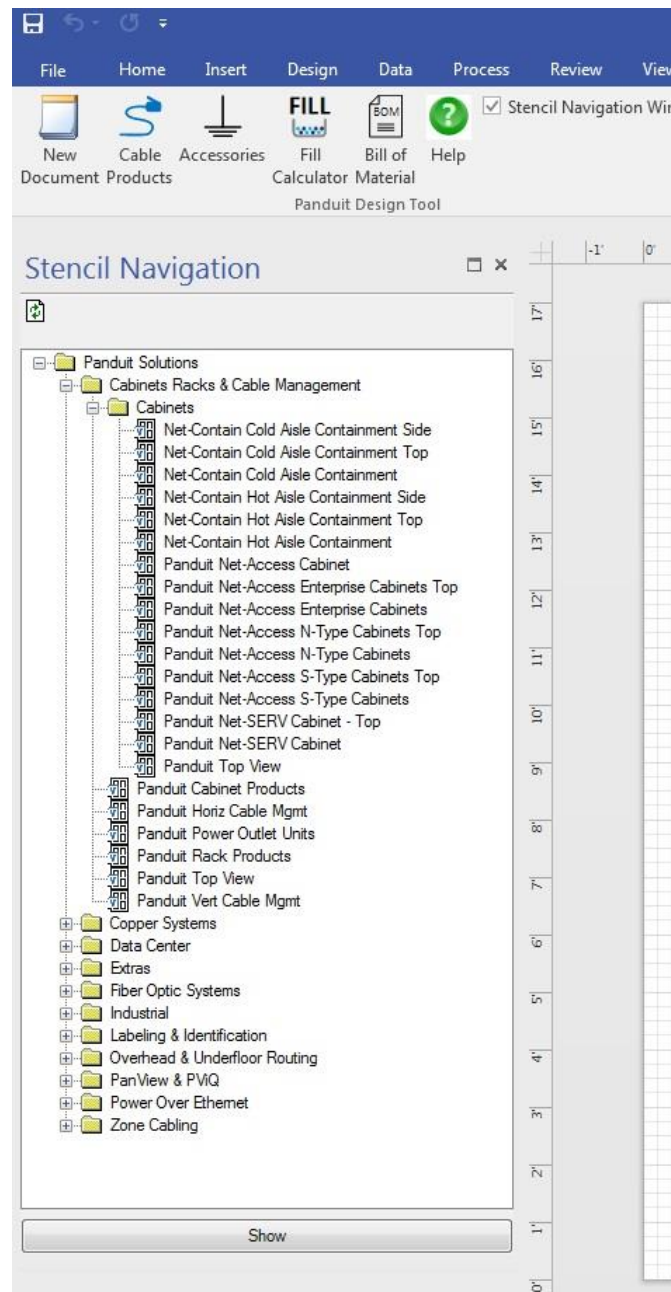


Top View HDA Front View MDA Front View All +

Page 2 of 3 English (United States) 67%

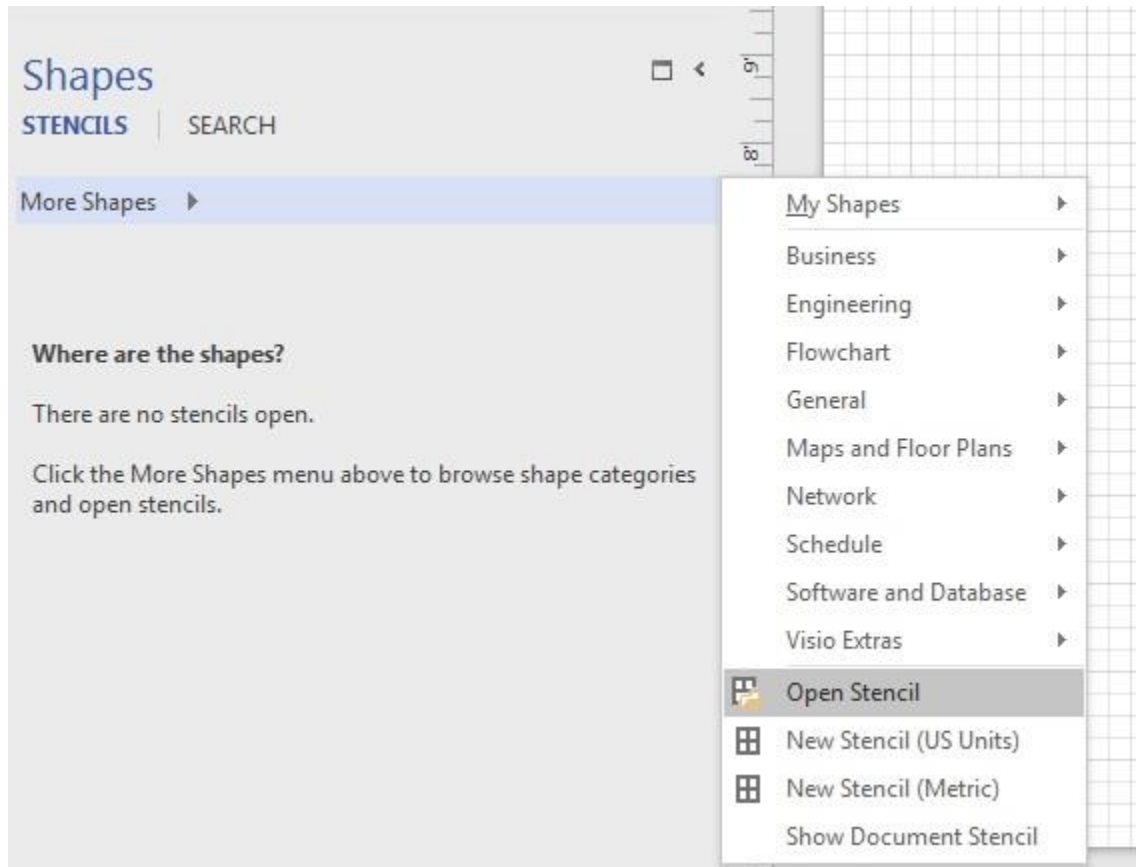
## Accessing Panduit Stencils

To access the *Data Center*, Panduit *FiberRunner*<sup>™</sup>, and *Fiber-Duct*<sup>™</sup> stencils, double-click one of the folders listed in the *Stencil Navigation* pane to see all the stencils within the folder (or click the plus sign next to it). Then double-click the stencil you need to open, or click the **Show** button. When you try to open another stencil, it will replace the one that is currently open in the *Shapes* window.



If you need more than one open at a time, select the **More Shapes** drop down on the toolbar in the Shapes area of Visio. This will let you click **Open Stencil** and navigate to the stencils you

wish to open. You can also open the Visio standard stencils by clicking on a category and navigating to a stencil.



(Visio 2010, 2013 and 2016 screen style)

These features allow the user to access specific stencils when working in other stencils/templates and having more than 1 open at a time.



## Panduit Fill Calculator



The *Panduit Fill Calculator* is a good place to begin when developing a layout. This tool allows the user to select the appropriate fiber routing or vertical cable management product line for their project. By selecting the **Fill Calculator** icon (shown left), the *Panduit Fill Calculator* dialog is displayed.

### Area Calculator

The area calculator computes the area of the cables that will be placed in the channel. A variety of cable sizes may be added to the cumulative cable count and area total. Enter the quantity of cable and the associated dimensions in the respective dialog boxes. Then, select the **Add** button and the entered values are added to the existing totals. The user is also capable of removing line items and clearing the entire field.

The area calculator works for both English and metric units. The conversion between units is calculated automatically by selecting the inches or millimeter options. The *Panduit Fill Calculator* supports round and flat cable, vertical cable managers, *GridRunner CabinetRunner*, and *Fiber Routing* products.

**Panduit Fill Calculator**

**Area Calculation**

Cable Type  
 Round Cable  
 Flat Cable

Number of Cables: 500  
 Outside Diameter: 2

Inches  
 mm

Buttons: Add ->, <- Remove, Clear

Dimensions	Quantity	Area
2.00 Dia	500	1,570.795
Totals		500   1,570.795 mm <sup>2</sup>

**Product Recommendation**

Product Type: Fiber Routing

Calculate for Future Expansion (40% Filled)  
 Fill Channel Completely (60% MAX)  
 NOTE: 60 % full is considered filled to capacity.

Use These Routing Systems

- Fiber-Duct 4x4
- FiberRunner 4x4
- FiberRunner 6x4
- FiberRunner 12x4
- FiberRunner 24x4

**Product Selection**

Choose from all Product Lines

- Fiber-Duct 2x2
- Fiber-Duct 4x4
- FiberRunner 2x2
- FiberRunner 4x4
- FiberRunner 6x4

Product Fill Percent: 16.4%

Close

### Area Calculator

The Product Recommendation feature displays the acceptable product lines for the computed cable area. The **Future Expansion** option displays the routing systems that have a fill capacity under 40% for fiber routing and 33% for vertical cable managers. The **Fill Channel Completely** option displays the systems that possess a fill capacity that is equal to or less than 60% for fiber routing and 50% for vertical cable managers for the computed cable area.

*Note: A full channel will occupy the product type's respective maximum percent of the total available area.*

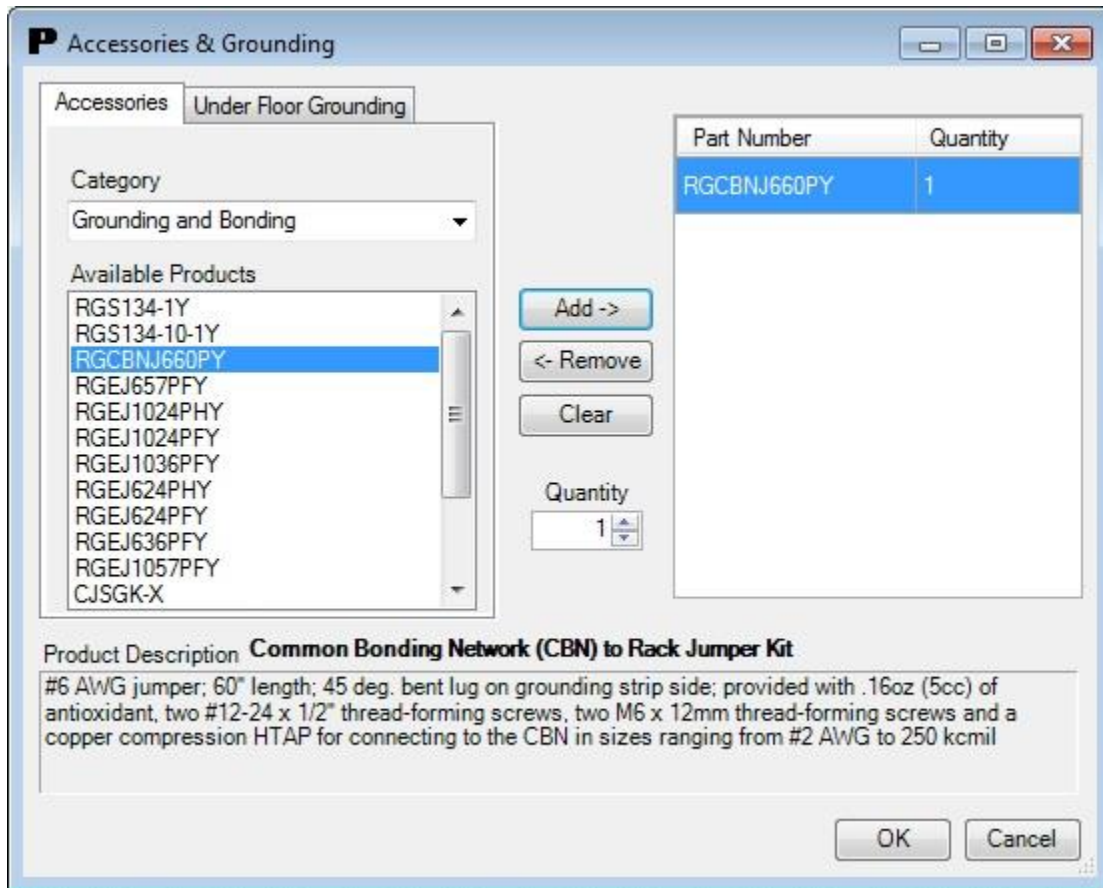
### Product Recommendation

For the computed cable area, the fill percentage for the various routing product lines may be calculated. Once the cable information has been entered and the cable area has been calculated, select a product line and the resulting fill percentage is displayed.

## Accessories Dialog



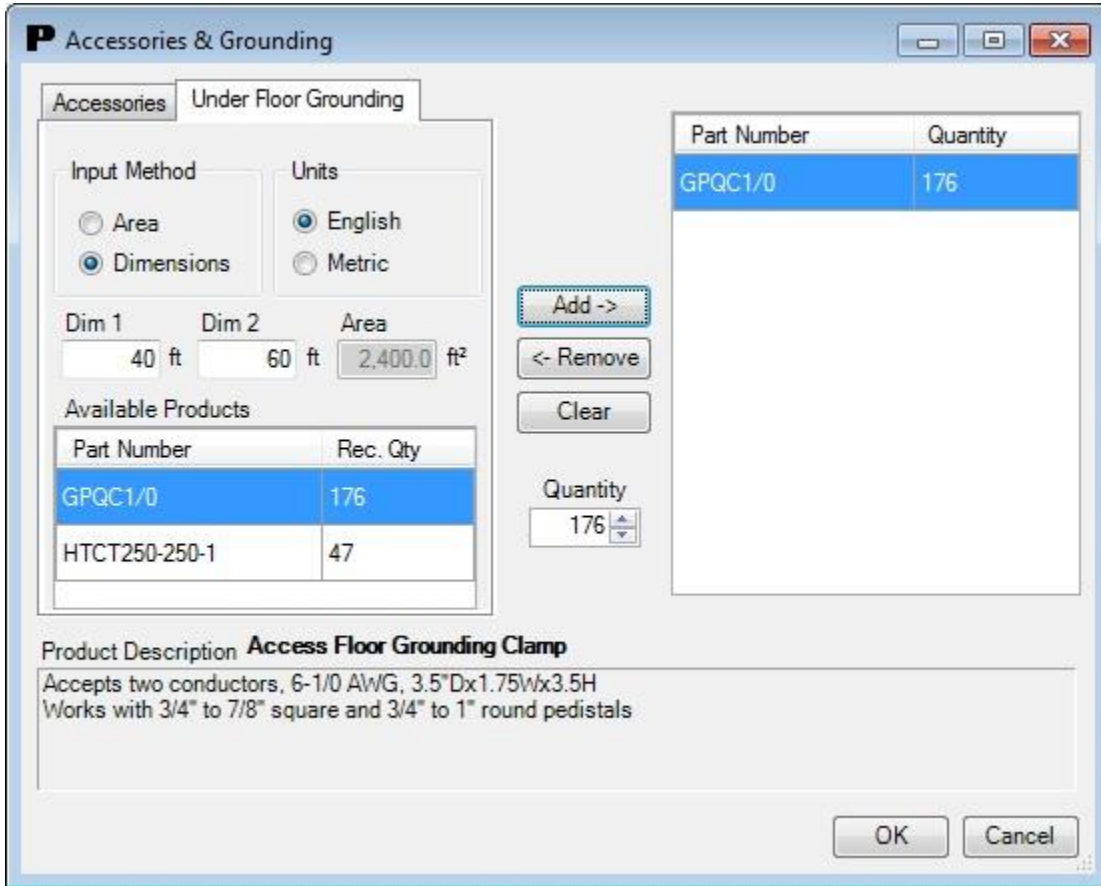
Select the **Accessories** icon (shown at left) from the Panduit menu to display a dialog box, which allows you to pick various accessories based on the category shown. Pick accessories for Grounding, Racks, Managed Networks, *QUICKNET*<sup>™</sup>, Cable Managers, Wiring Accessories, and others.



This dialog allows the selection of Grounding, Rack, Active Cable Management, Wiring Accessories items to be added to the BOM without having a shape on the drawing sheet. A category is selected, then the list of available accessories is listed on the left. Select one of the items needed for the BOM and a "Product Description" is listed at the bottom with a detailed description below. The **Quantity** box will be filled in with the default minimum order quantity. Change the quantity if so desired then select **Add** to place that item on the right side of the dialog box. Now it is ready to be stored for addition to the BOM once that icon is selected.

The categories may be changed so other products/quantities may be added to the list. Once completed, **Ok** must be selected for the added items to be "stored" for addition to the BOM. If **Cancel** is selected, no selections are "stored".

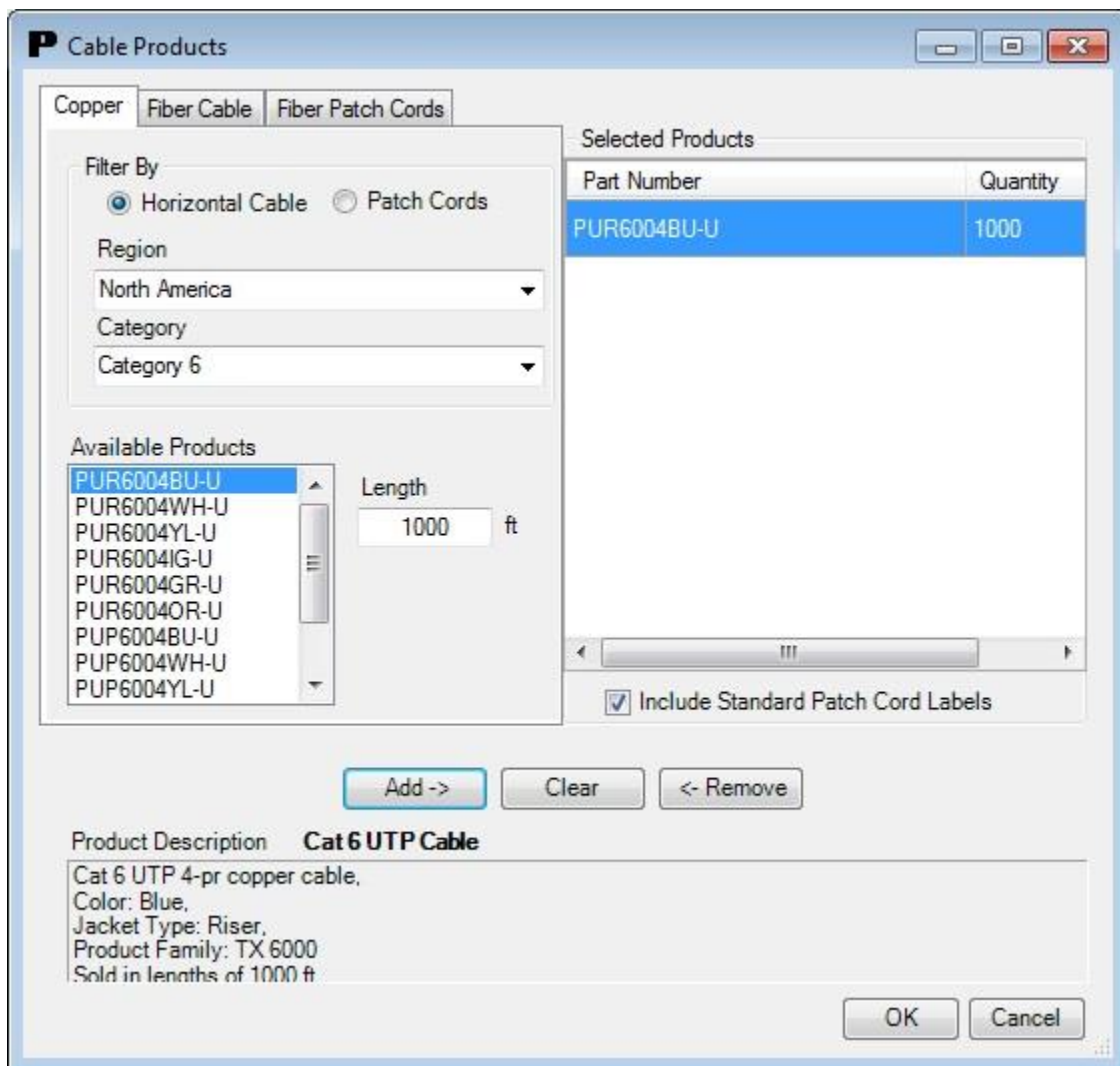
For the **Under Floor Grounding** tab, the user can input the area or the dimensions of the room in English or Metric and the appropriate amount of under floor Grounding Clamps and HTAPS will be listed. Then the user just selects the clamps and HTAPS, and clicks **Add** to place the items on the right side of the dialog box so they can be added to the BOM.



## Cable Products



Select the **Cable Products** icon (shown on the left) to display a dialog which allows selection of horizontal cable (per region), copper patch cords, *PanView* copper and fiber patch cords and configured fiber cable/patch cords to be added to the BOM without having a shape on the drawing page.



### Copper Cable and Patch cords:

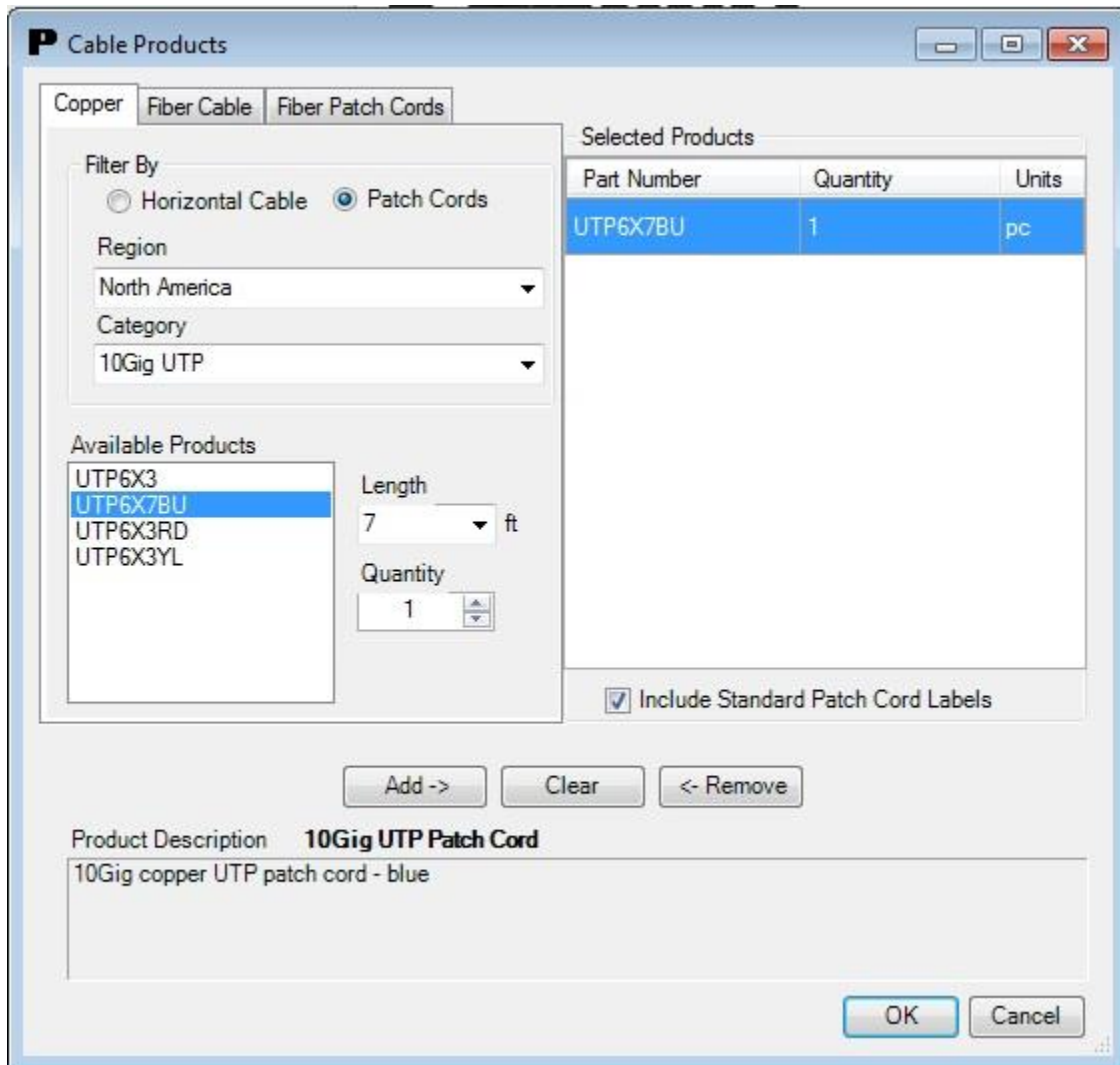
For copper cable when the **Region** and **Category** is selected, a list of copper cables for that region from that category will be displayed. As the cable is selected, a "Product Description" is displayed at the bottom with a detailed description below. The **Quantity** box will be filled in with the minimum order quantity. Change the quantity if so desired and select **Add** to place that

item on the right side of the dialog box. Now it is to be stored for addition to the BOM once that icon is selected.

To select patch cords, check the **Patch Cord** button, **Region** and **Category** to get a list of applicable patch cords. If Category 5e or 6 patch cords are selected the following is how to set up the color and length of those patch cords:

1. The patch cord selections that are listed here will have the color designation at the end of the part number and will have the minimum length listed within the part number. The user will have to select the color patch cord desired and then select the desired length from the **Length** drop-down. Notice that the new length is now seen in the part number in the list box.
2. Change the quantity if so desired through the **Quantity** box and select **Add** to place that item on the right side of the dialog box. Now it is stored for addition to the BOM.

For the remaining patch cord types, the color and length is in the part number. As they are selected, the description and the quantity (which can be changed) are displayed.



### Fiber Cable and Patch cords:

To select the proper fiber cable and/or patch cords needed, go to the **Fiber Cable** and/or **Fiber Patch Cords** tabs to use the configurator. By selecting an option via the drop down menus, you will end up with a fiber cable or fiber patch cord part number and the minimum length or a choice of lengths.

**P Cable Products**

Copper Fiber Cable Fiber Patch Cords

Cable Options

Usage  
Indoor

Region  
USA (10 Gig)

Construction  
Distribution (6,8,12,24,36,48,72,96,144 F

Flame / Smoke Rating  
Riser, UL 1666 OFNR

Fiber Type  
Laser Optimized 50/125 Micron MM (300

Fiber Count  
24

Part Number Length  
FODRX24Y 1000 ft.

Include Standard Patch Cord Labels

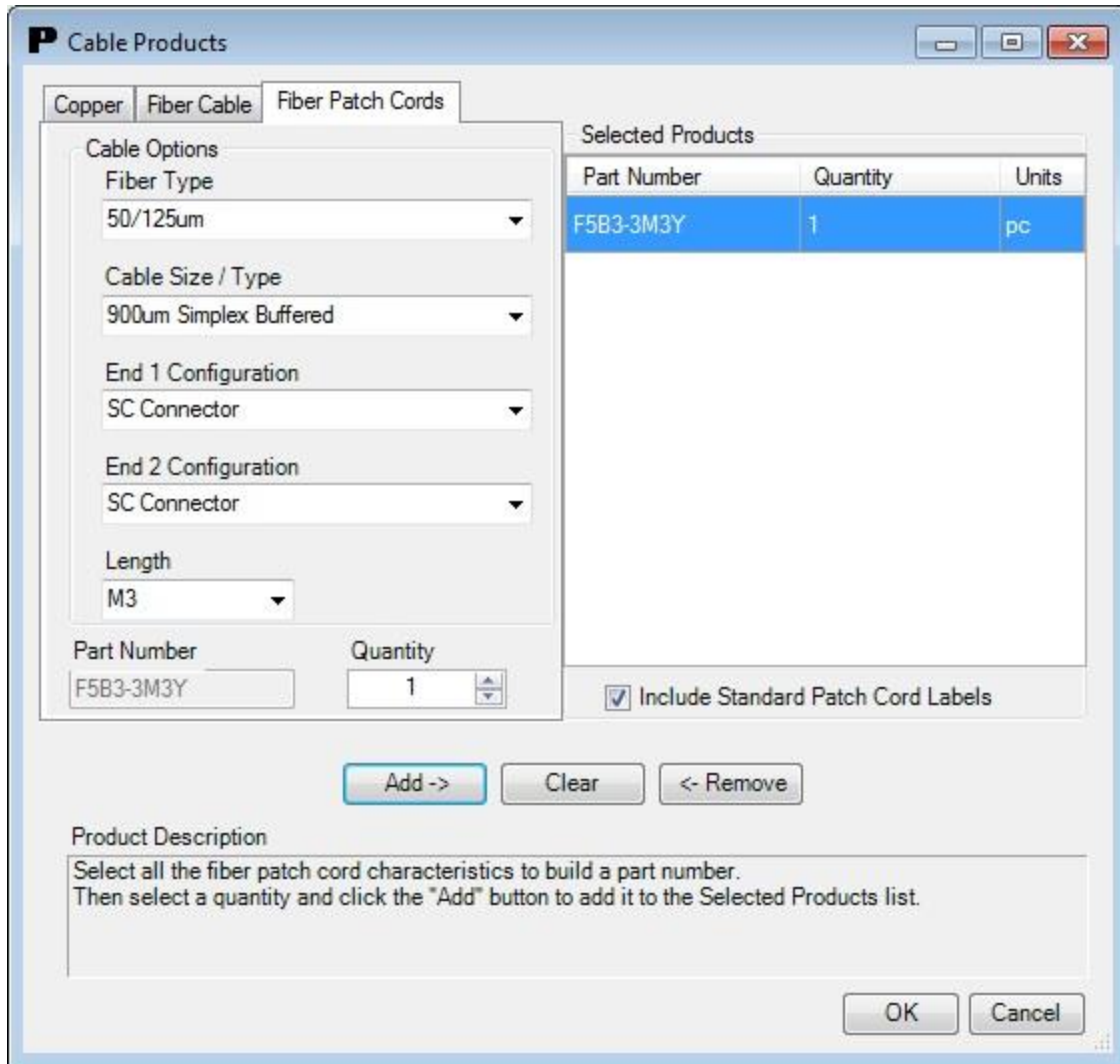
Add -> Clear <- Remove

Product Description  
Indoor cables with the 24 fiber count designation have a minimum order quantity of 1000 ft.

OK Cancel

Selected Products		
Part Number	Quantity	Units
FODRX24Y	1000	ft.





The last thing to do before **OK** is selected is to either keep the check or remove the check from the "**Include Standard Patch Cord Labels**" check box located on the right side of the dialog box.

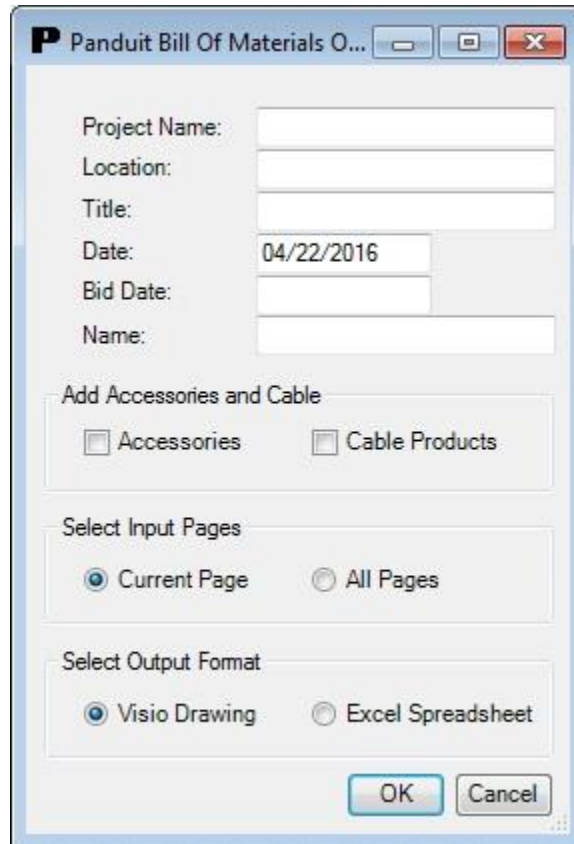
- If unchecked, the BOM will not show any patch cord labels to order.
- If checked, the BOM will show the standard type of label that goes with that diameter patch cord.

Now select **OK** to store these items for addition to the BOM.

## Bill of Material Creation



Select the **Bill of Material** icon (shown left) to create a listing of the products in the layout. Insert the title information (project name, location, title, etc.) in the **Panduit Bill of Material Output** menu, select either **Accessories** or **Cable Products** if needed and not selected from the toolbar previously or if changes need to be made, select **Visio Drawing** or **Excel Spreadsheet**, and select **OK**



The screenshot shows a dialog box titled "Panduit Bill Of Materials O...". It contains several input fields and options:

- Project Name: [Empty text box]
- Location: [Empty text box]
- Title: [Empty text box]
- Date: 04/22/2016
- Bid Date: [Empty text box]
- Name: [Empty text box]

Below the input fields are three sections:

- Add Accessories and Cable**: Contains two checkboxes,  Accessories and  Cable Products.
- Select Input Pages**: Contains two radio buttons,  Current Page and  All Pages.
- Select Output Format**: Contains two radio buttons,  Visio Drawing and  Excel Spreadsheet.

At the bottom right are two buttons: **OK** and **Cancel**.

If either the **Accessories** or the **Cable Products** button is checked, when you click **OK** for the BOM, the dialogs discussed above for Accessories and Cable Products will display.

## Visio Drawing BOM

The Design Tool BOM generator will calculate the number of Panduit components that were used in the layout and/or the items selected from the *Accessories* and *Cable Products* dialogs and automatically generate a new page titled "*Panduit BOM 1*". If more than one page is needed to display the components, additional Panduit BOM pages will be created ("*Panduit BOM 2*", "*Panduit BOM 3*", etc.).

to do...

Fill Line Effects Styles

Align Position

Bring to Front Send to Back Group Arrange

Change Shape Editing

Find Layers Select

0' 0'3" 0'6"

# PANDUIT®

## Bill of Material

Project Name: Date: 04/22/2016  
 Project Location: Bid Date:  
 BOM Title: By:

Be sure to visit [www.panduit.com](http://www.panduit.com) to locate any other Panduit accessories necessary to complete your layout. Additional products will need to be manually added to the BOM.

Qty.	Unit	Part#	Description
144	pc	CJ6X88TGBU	Mini-Com TX6 10Gig Jack Module, category 6
3	pc	CPP48WBLY	48 port patch panel supplied with 12 factory installed CFFP4 type snap-in faceplates.
9	pc	CWMPH1	19" Cabinet Horizontal Cable Managers. 19" Horizontal wire management panel with duct front and back. Dimensions 1.72"H x 5.7"D x 19"W
4	pc	F1RCZN-9612-10F	QuickNet HDQ High Density Cassette OM4 Standard Fiber Flipped
3	pc	FCE2U	Fiber Cassette Enclosure. Flat front cover with slide-out, tilt-down drawer. Holds (8) Opticom QuickNet pre-terminated fiber cassettes, FAPs, FMPs. Terminate, patch, and/or splice up to 192 fibers
7	pc	N8212B	Standard Cabinet N-type 800mm x 42RU x 1070mm, Black with 2 Side Panels
5	pc	NM3	Horizontal cable mgr front and rear
4	pc	QAPP24BL	Quicknet Angled Patch Panel, 24 Port, 1 RU
1	pc	WMP1E	PatchLink™ Horizontal Cable Managers. Replacement Cover Kit

To edit the Bill of Material information, select the desired cell on the Panduit BOM page. Once the text has been updated simply deselect the cell for the updated information to remain. If you wish to save this BOM, you must save the Visio drawing to keep this information. To send this to your Panduit sales representative or to distribution, you must print this BOM and fax.

Note: If you re-run the BOM generator after making manual changes to the bill of materials, your changes will be lost.

## Microsoft® Excel Spreadsheet BOM

The Bill of Material information can be organized in an Excel Spreadsheet by selecting the **Excel Spreadsheet** output format at the bottom of the BOM dialog box.

Once the BOM in Excel format is displayed, editing is the done the same as any Excel spreadsheet. Once the BOM is saved, separate from the Visio drawing, it can be printed and faxed or emailed to your Panduit sales representative or distribution.

Note: The BOM generator uses an Excel file as a template to create the BOM layout. When saving the file, use **Save As...** to give the file a new name.

### *Notes:*

- *If Microsoft Excel is not installed on your system, the **Excel Spreadsheet** radio button in the Panduit Bill of Material Output dialog window will not be available for selection - it will be "grayed out."*
- *The abbreviations in the Unit column stand for the following:*
  - *ft =foot*
  - *m = meter*
  - *pc = piece*
  - *pkg = package*
- *Some part quantities are rounded up to the full piece. For example, since the channel sections come from the factory in 6' lengths, 13.6 linear feet of channel would be rounded up to 18 feet on the BOM.*

## Ordering

To order the components listed on the Bill of Material, call your authorized Panduit distributor or Panduit (800) 777-3300.

*Note: Panduit Corporation assumes no obligation or liability for the accuracy of the Bill of Material. It has been prepared to the best of our ability with the drawings and specifications provided to us. All material and quantities should be verified by the installer. Applicable components are shown to the nearest purchasable quantity.*

## Partner Information

Visit [Panduit Partners](#)

Select the **Visit Panduit Partners** link (shown at the left, found by going to Files > Panduit Design Tool for Visio) to be directed to the *Partner Ecosystem* page located on Panduit's website. This information will explain the *Partner* program and provide a list of Partners whose websites can be accessed for other information or to access other Visio product stencils.

The screenshot shows the top navigation bar of the Panduit website with the tagline "building a smarter, unified business foundation" and links for "UNITED STATES", "[CHANGE] ENGLISH", "REGISTER / LOG IN", and "FOLLOW US". The main navigation includes "PANDUIT", "SOLUTIONS", "PRODUCTS AND SERVICES", "SUPPORT", and "ABOUT US". A search bar is present with a "GO" button. The main content area features the heading "Working together to help you succeed every step of the way." followed by a paragraph about the partner ecosystem. Below this is a list of partner categories: TECHNOLOGY PARTNERS, DISTRIBUTORS, SYSTEM INTEGRATORS, ARCHITECTS, ENGINEERS AND CONSULTANTS, and CONTRACTORS AND INSTALLERS. A section titled "Become a Partner ONE™ Partner" includes a graphic with the word "PARTNER" and various verbs like "SUSTAIN", "COOPERATE", "SHARE", "SUPPORT", "COLLABORATE", and "ADVICE". A "Learn more" link is provided.

Unified Physical Infrastructure

[LEGAL INFORMATION](#) | [PRIVACY POLICY](#) | [CONTACT US](#) | [SITE MAP](#) | [WHERE TO BUY](#) | [JOBS](#) | [UNSUBSCRIBE](#)

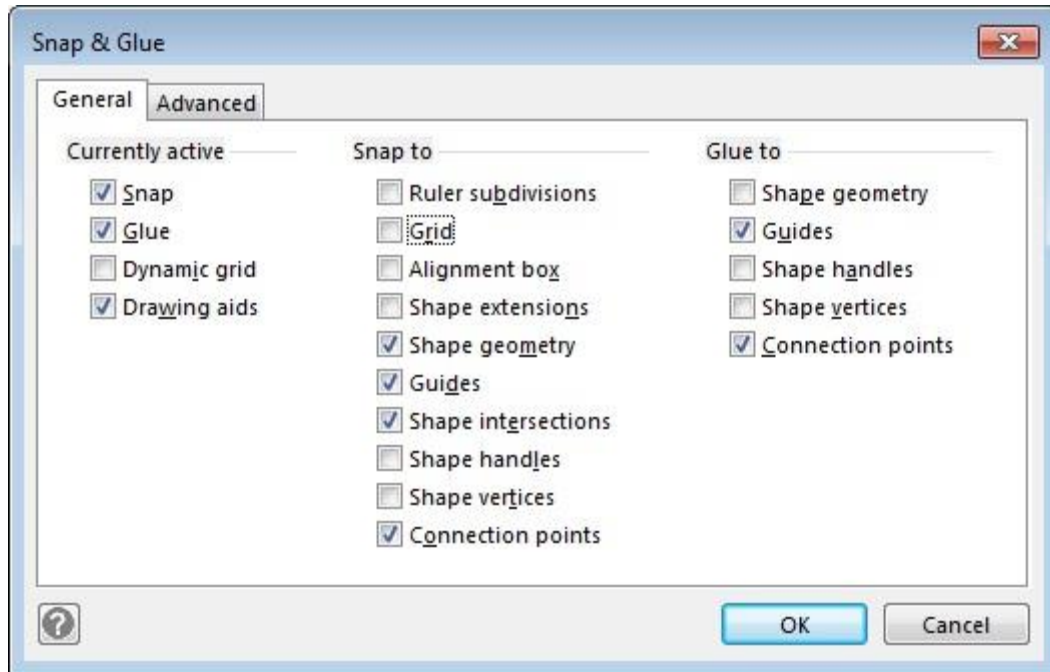
## Panduit Online

Visit [www.panduit.com](http://www.panduit.com)

Select the **Visit www.panduit.com** link (shown at the left, found by going to Files > Panduit Design Tool for Visio) to be directed to [www.panduit.com](http://www.panduit.com). This will allow access to all Panduit information at the click of the mouse.

## Helpful Hints

- For the *FiberRunner™* product line, every junction whether it is channel-to-channel, fitting-to-fitting, or channel-to-fitting requires a QuikLock Coupler to join the components together.
- The *Fiber-Duct™* product line, every channel-to-channel junction requires the use of a coupler as well as the size appropriate Panduit Snap Rivets to secure the connection (refer to the Panduit catalog for the proper part numbers when ordering).
- For the *Fiber-Duct™* product line, every fitting-to-fitting and channel-to-fitting junction requires the use of the size appropriate Panduit Snap Rivets to secure the connection (refer to the Panduit catalog for the proper part numbers when ordering).
- For the *Data Center* templates, our copper jack modules and fiber adapters, if there are various colors, once the part is brought onto the drawing, use the right mouse button for that part and chose the preferred color. The color and part number will change accordingly.
- On a few occasions, when a part is brought onto the drawing to be placed on a rack, it is possible that the part will snap in on an angle. This part must be removed and the same part picked and brought onto the drawing and placed so the snap points fit correctly on the rack.
- For a few fiber enclosures, FMT1 and FMT2, we show the product with the door closed. You can "snap" the enclosure into the rack, then "snap" the panel, which holds the fiber adapter panels, onto the enclosure, then "snap" the fiber adapter panels into the slots on the panel. That way, all products will be recognized by the Bill Of Material generator.
- Please refer to the Panduit catalog and/or web site for additional part numbers and mounting options that may have not been included with this layout tool.
- For the *QUICKNET™* Fiber cassettes, the 12-fiber cassette shows one part number in the stencil, but when you drop that shape on the layout you can right mouse click and pick which part number you want in the BOM.
- For the *Net-Access™* Cabinets, the user can right mouse click and select the part number of the cabinet they need. For views other than Front, the user can Include or Not Include them in the BOM.
- For the Top View shapes the user can right mouse click and Include or Not Include them in the BOM.
- For the *GridRunner™* and *CabinetRunner* shapes the user can right mouse click and Include or Not Include in the BOM.
- Once a Panduit shape is placed on a drawing, you can right-click it and then click **Panduit Part Info Online** to open a web browser to the product page of the selected product shape.
- For the *Wyr-Grid™* shapes, they can be most effectively used if the Visio snap settings are set the like the diagram below.





## Shortcuts in Visio

- Zoom In - Hit **Ctrl** and **Shift** at same time, Left mouse click (or rotate the scroll wheel).
  - Zoom Out - Hit **Ctrl** and **Shift** at same time, Right mouse click (or rotate the scroll wheel).
  - Zoom on particular area - Hit **Ctrl** and **Shift** at same time, use cursor (magnifying glass) to put a box around area to zoom in on, release.
  - Position shape not connected - Hold **Shift** and use up, down, left, right arrow to move shape into correct location.
  - Shape information:
    - Custom Properties - Select the shape, right mouse click, then click **View, Custom Properties**.
    - Group shapes together for an instance - Put cursor just outside upper left corner of shape and put box around all shapes you want to group. Once you release the box, all items are grouped for that instance. You can grab the group with the 4-headed arrow and move. Once you click anywhere on the page, the shapes are ungrouped.
    - Group shapes together for as long as needed - Do as above to put a box around the shapes wanted in a group. Now, right mouse click, select **Shape**, and select **Group**. It will now be a group until you **Ungroup** the shapes.
    - Sometimes to group them you may need to select one shape, then hold down the **Ctrl** key and select all the others. You may have to zoom in to select all needed shapes. Then right mouse click, select **Shape**, and select **Group**.
- Ungroup shapes - Select the group, right mouse click, select **Shape**, and select **Ungroup**. All shapes are individual shapes again. Rotate or Flip shapes - Select shape, right mouse click, select **Shape**, and select **Rotate** or **Flip** in whatever direction you need.
- Groups - Remember, when shapes are grouped, they will not "snap" into place (i.e. On a rack). You can use the **Shift/Arrow** keys to move them into position. The BOM generator will find all the pieces of the group to list on the BOM.

## Dialog Error Messages

If error messages are displayed when opening the Fill Calculator, Accessories, or Cable dialogs, the underlying data file may have been deleted or corrupted. Check to make sure that "C:\Program Files\Panduit Corporation\Panduit Design Tool For Visio\CommonFiles\panduitDesignToolData.xml" exists and that you have permissions to read it. If the file is missing, uninstall and reinstall the Panduit Visio Design Tool.

If some interruption occurred during the current session, the user may see a Visio error message when selecting from the Panduit toolbar or the toolbar buttons will not work. Save the drawing, close Visio, re-open Visio, open the drawing and the toolbar will be re-set.

## Missing Panduit Menu or Stencil Navigator

The Panduit Menu and Stencil Navigator run as a COM Add-In. Click **File->Options->Add-Ins** and then click the Go... button next to Manage: COM Add-Ins. Enable the check box next to the "*PanduitDataCenter*" item and click **OK**.

## Technical Support Info

For technical support call:

North America: 866-405-6654

Latin America: 01 800 969 42 00 or + 52 33 3777 6000

Europe, Middle East and Africa: 0044 (0) 208 6017251

Asia Pacific: 1800-PANDUIT (7263848)

Japan: +81-3-6863-6050

or email [visio-support@panduit.com](mailto:visio-support@panduit.com)

## Copyright Notice

Copyright © 2016 Panduit Corp.

All Rights Reserved

Panduit Design Tool for Visio v6.0 User Manual

April 2016

Panduit Corporation

18900 Panduit Drive

Tinley Park, IL 60487

## Liability Disclaimer

Panduit is not responsible for incorrectly ordered parts.

The software and this document are subject to change without notice.

## Trademarks

Windows® is a registered trademark of Microsoft Corporation.

Visio® is a registered trademark of Microsoft Corporation.

Excel® is a registered trademark of Microsoft Corporation.

Panduit®, *FiberRunner*®, *Mini-Com*®, *Opticom*®, Pan-Punch®, and *PanZone*® are registered trademarks of Panduit Corporation.

*Fiber-Duct*™, *PatchRunner*™, DP5e™, DP6™ Plus, GP6™ Plus, DataPatch™, *GridRunner*™, *PanView*™, *Net-Access*™, *QUICKNET*™, and *Cool Boot*™ are trademarks of Panduit Corporation.

# Software License Agreement

PLEASE READ THIS SOFTWARE LICENSE AGREEMENT, ("LICENSE") CAREFULLY BEFORE INSTALLING THIS SOFTWARE PRODUCT PROVIDED BY PANDUIT CORPORATION, ("PANDUIT SOFTWARE"). BY PROCEEDING WITH THE INSTALLATION OF THE PANDUIT SOFTWARE, YOU ARE AGREEING TO BE BOUND BY THE TERMS OF THIS LICENSE. IF YOU DO NOT AGREE TO THE TERMS OF THIS LICENSE, RETURN THE PANDUIT SOFTWARE TO THE PLACE WHERE YOU OBTAINED IT.

## **License:**

The Panduit software and documentation accompanying this License, whether on disk, in read only memory, on CD-ROM, on a server, or on any other media or in any other form, are non-exclusively licensed to you by Panduit Corp., and Panduit Corp. retains title, ownership rights, and intellectual property rights in the Panduit software. The Panduit software, and any copies, which this License authorizes you to make, is subject to this License.

## **Permitted Uses and Restrictions:**

This License allows you to install and use the Panduit software on a single computer at a time. This License does not allow the Panduit software to exist on more than one computer at a time, except that you may make one (1) copy of the Panduit software in machine-readable form for back-up purposes only. The back-up copy must include all copyright and proprietary information contained in the original. Except as expressly permitted in this License, you may not decompile, reverse engineer, disassemble, modify, adapt, translate, rent, lease, loan, sublicense, distribute or create derivative works based upon the Panduit software, in whole or in part, or transmit the Panduit software over a network. THE PANDUIT SOFTWARE IS NOT INTENDED FOR USE IN HIGH-RISK ACTIVITIES, INCLUDING IN THE OPERATION OF NUCLEAR FACILITIES, AIRCRAFT NAVIGATION OR COMMUNICATION SYSTEMS, OR AIR TRAFFIC CONTROL MACHINES, IN WHICH CASE THE FAILURE OF THE PANDUIT SOFTWARE COULD LEAD TO DEATH, PERSONAL INJURY, OR SEVERE PHYSICAL OR ENVIRONMENTAL DAMAGE. Your rights under this License will terminate automatically without notice from Panduit Corp. if you fail to comply with any terms of the License. On termination, you must destroy all copies of the Panduit software.

## **No Warranties:**

The Panduit software is distributed "AS IS" and without warranty of any kind, either express or implied. The user assumes the entire risk as to the selection, results, and performance of the software. In no event shall Panduit Corp. be liable, under any legal theory, for any damages whatsoever, including lost profits, lost savings, lost or corrupted data, loss of goodwill, work stoppage, computer malfunction, or other indirect, special, incidental or consequential damages arising out of the use, the inability to use, or the failure of this software, even if Panduit Corp. has been advised of the possibility of such damages. Implied warranties of merchantability and fitness for a particular purpose and warranty of non-infringement are specifically disclaimed, as

are any and all other warranties, express or implied. Panduit Corp. does not warrant that the functions contained in the Panduit software will meet your requirements, or that the operation of the Panduit software will be uninterrupted or error-free, or that defects in the Panduit software will be corrected. Furthermore, Panduit Corp. does not warrant or make any representations regarding the use or the results of the use of the Panduit software or related documentation in terms of their correctness, accuracy, reliability, or otherwise. Furthermore, no oral or written information or advice given by Panduit Corp. or a Panduit Corp. authorized representative shall create any warranties. Should the Panduit software prove defective, you (and not Panduit Corp. or a Panduit Corp. authorized representative) assume the entire cost of all necessary servicing, repair, or correction. The disclaimers of warranty constitute essential parts of this License. SOME JURISDICTIONS DO NOT ALLOW EXCLUSIONS OF AN IMPLIED WARRANTY, SO THIS DISCLAIMER MAY NOT APPLY TO YOU AND YOU MAY HAVE OTHER LEGAL RIGHTS THAT VARY BY JURISDICTION.

**Export Law Assurance:**

You may not use, download, or otherwise export or re-export the Panduit software except as authorized by United States Laws and the laws of the jurisdiction in which the Panduit software was obtained. In particular, but without limitations, the Panduit software may not be exported or re-exported (a) into (or to a national or resident of) any U.S. embargoed country or (b) to anyone on the U.S. Treasury Department's list of specifically designated nationals or the U.S. Department of Commerce's Table of Denial Orders. By downloading, installing, or using the Panduit software, you represent and warrant that you are not located in, under control of, or a national or resident of any such country or on any such list.

**Controlling Law and Severability:**

This License shall be governed by the laws of the United States and the State of Illinois. If for any reason a court of competent jurisdiction finds any provision or portion thereof to be unenforceable, the remainder of this License shall continue in full force and effect.

**Complete Agreement:**

This License constitutes the entire agreement between the parties with respect to the use of the Panduit software and supersedes all prior or contemporaneous understandings regarding such subject matter. No amendment to or modification of this License will be binding unless in writing and signed by Panduit Corp.