



SynapSense Release 7.6 Planning Letter

Copyright © 2020 Panduit Corp. All rights reserved. No part of this book shall be reproduced, stored in a retrieval system, or transmitted by any means, electronic, mechanical, photocopying, recording or otherwise, without written permission from Panduit. No patent liability is assumed with respect to the use of the information contained herein.

Although every precaution has been taken in the preparation of this book, Panduit assumes no responsibility for errors or omissions. Neither is any liability assumed for damages resulting from the use of the information contained herein.

Table of Contents

About This Document	4
Scope	4
Purpose of This Document	4
Panduit Technical Support	4
Severity 1 & 2 Issues:	4
Severity 3 & 4 Issues, Email - normal business hours:	4
Overview	5
Release 7.6 Highlights	5
SynapSense G5 PDU Power Monitoring Solution	5
Security Upgrade	5
SynapSense Release 7.6 Minimum System Requirements	6
Server Hardware	6
Server Software	6
Client PC	7
Supported Migration Paths for SynapSense Release 7.6	8
Upgrading from Pre-6.8.1	8
Standard Installation or Upgrade	8
New Features in Release 7.6	9
Web Console	9
MapSense	9
Active Control	10
General Product Changes	10
Resolved Issues in SynapSense Software Release 7.6	11
Known Issues	12
Web Console – LiveImaging	12
MapSense – Renaming Objects	12
Active Control Appliance	12
Appendix A: Related Information Products and Sites	13

About This Document

Scope

This Planning Letter covers new features, enhancements, and prerequisites that will be introduced in SynapSense Release 7.6.

Purpose of This Document

This document is designed to help you prepare for the upcoming SynapSense release in terms of the following considerations:

- Software requirements
- Supported migration paths
- New features and enhancements
- Resolved issues
- Known issues

Panduit Technical Support

Severity 1 & 2 Issues:

Americas: 1-866-721-5302 x86810 during normal Central Standard Time business hours

EMEA: 44-1291-674-661 x22761 during normal U.K. business hours

APAC: 65-8200-3931 or 65-8200-3932 between 8 a.m. and 5 p.m. local time

Severity 3 & 4 Issues, Email - normal business hours:

systemsupport@panduit.com

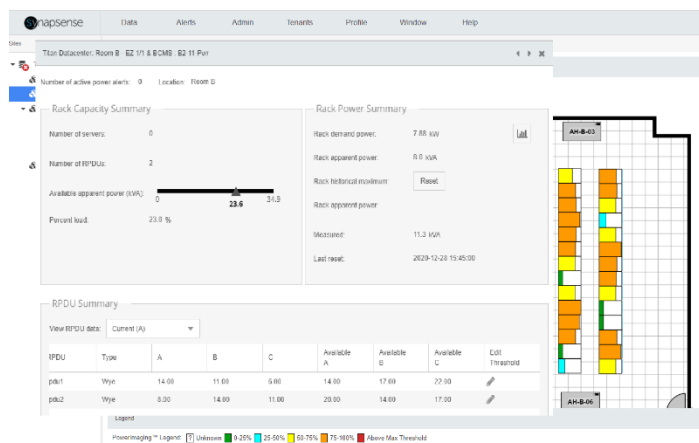
Overview

Panduit's SynapSense Software Release 7.6 focuses on support for Panduit G5 PDUs and third-party GPUs, along with other important enhancements.

Release 7.6 Highlights

SynapSense G5 PDU Power Monitoring Solution

SynapSense Software Release 7.6 provides full support for G5 and third-party PDUs. The SynapSense 7.6 interface with Panduit G5 PDUs provides all SynapSense features from wired sensors – making wireless sensors optional. In addition to SynapSense Livelmaging™, customers with G5 and other PDUs can use the Powerlmaging™ features to monitor their rack- and PDU-level power, along with temperature and humidity from the sensors attached to the PDUs.



The G5 PDU Power Monitoring solution also integrates with the existing SynapSense PUE system and Livelmaging to deliver information about both sides of thermal and power rack resources. Enables customers to better manage both power distribution and cooling systems.

Security Upgrade

In Release 7.6, the Web Console application defaults to HTTPS for all authentication information and sensitive data being transmitted on the internal network.

SynapSense Release 7.6 Minimum System Requirements

The following minimum specifications must be met prior to installing the server components.

The standard configuration installs all components on a single server. If using a multiple server configuration, please consult with your Panduit Professional Services representative before proceeding.

If you are also installing SynapSense Active Control, see the Active Control Installation Guide for system requirements and installation instructions.

Server Hardware

- **Processor** – Quad-core Intel® Xeon® L5606 (2.10 GHz) or better
- **Memory** – 8 GB RAM (fully buffered) for core components. Add 1 GB of RAM for each additional optional component installed. Large installations may require 16 GB RAM and 2 GB of RAM for each optional component.
- **Disk Space** – 1 TB (hot-swap RAID recommended)
- **Connectivity** – 1 GB Ethernet adapters
- **Server Mode** – Operating system must be configured NOT to reboot automatically after receiving OS updates. Any automatic reboots should be disabled. * Incorrect termination of the SynapSense database could cause database corruption.

***Note:** Manually restart the SynapSense Environment Server after an operating system update to verify that all services start with the new components. The SynapSense wireless network does not function if the server is restarted and the SynapSense Device Manager service does not start. This causes the wireless nodes to go into Sleep mode after several hours and can then take up to 24 hours to begin reporting again.

Server Software

- **Operating System** – Microsoft® Windows Server 2008 R2, 2012, or 2016. MapSense also runs on Windows® 10.

- **User Privileges** – Software installation requires the active user to have full administrator privileges.
- **Software** -- Java Development Kit (JDK) version 8. Both OpenJDK and OracleJDK 8 are supported. If neither are available, the installer will install OpenJDK 8.

Client PC

- **Supported Browsers** – MS Edge, Mozilla® Firefox ® 48.x or higher, and Google Chrome™ 55 or higher.
- **Screen Resolution** – For the best display, a minimum resolution of 1280x1024 on Client PC display screens is recommended.

Supported Migration Paths for SynapSense Release 7.6

Upgrading from Pre-6.8.1

SynapSense 6.8.1 fixed two critical issues reported at multiple customer sites. The issues affect all installations of SynapSense since 6.5. Upgrading to this version from a pre-6.8.1 version must follow the upgrade process defined in TR116 (TCN51) to resolve those critical issues. Contact Panduit Technical Support for more information.

Before installing or upgrading to SynapSense 7.6, review the following information.

Note: You must have a valid support and maintenance agreement to access SynapSense upgrades and receive Panduit Technical Support assistance.

Note: Paid Service Engagements are available to assist you with any upgrade.

Standard Installation or Upgrade

If you are new to SynapSense software or are currently running SynapSense 7.0 or later, simply mount and run the installation file. When prompted, select **Install SynapSense DCIM Software**.

Note: *If upgrading from SynapSense 7.2 or prior.* Once SynapSense 7.6 is installed, the administrator must reset all user passwords so that they adhere with the user-configured password security rules. The upgrade will reset the "admin" user's password to "admin".

For further installation details, see the SynapSense Software Installation Manual included in the release folder.

New Features in Release 7.6

The following sections describe the new features in Release 7.6 for Web Console, MapSense, and Active Control, along with general product updates.

Web Console

- **Increased Floor Plan Area:** The Floor Plan view has been redesigned to maximize the viewable area of the Floor Plan.
- **Security Upgrade:** The Web Console application defaults to HTTPS for all authentication information and sensitive data being transmitted on the internal network.
- **Previous/Next Buttons on Floor Plan:** Previous and Next buttons display in Rack Environment Summary window, allowing you to move to the next or previous ThermaNode in a rack from the Floor Plan.
- **Right-Click Menu for Formatting a Multi-Axis Chart:** Options include:
 - Format Axis
 - Chart Options
 - Zoom Chart In
 - Zoom Chart Out
 - Add Animation
 - Print Chart
 - Export
- **Alert Definitions Filter Option for Tenant User:** When a Tenant User creates an Alert Definition, options for setting alert definitions while associating objects for the alert, a Cage filter allows the user to more easily associate all cage objects for the alert.

MapSense

- **Two New Components for Racks with PDUs:** With combined view of power and environmental data:
 - SNMP 4PDUs Rack: Racks containing four PDUs
 - SNMP 2PDUs Rack: Racks containing two PDUs
- **New Environmental OIDs:**
 - Intake Top Temperature: Mapped to Top of rack intake
 - Intake Middle Temperature: Mapped to Middle of rack
 - Intake Bottom Temperature: Mapped to Bottom of rack

- Exhaust Top Temperature: Mapped to Top of rack exhaust
- Humidity: Mapped to rack RH sensor

Active Control

None.

General Product Changes

- **SynapSense G5 PDU Power Monitoring Solution:** SynapSense Software Release 7.6 provides full support for G5 and third-party PDUs. The SynapSense 7.6 interface with Panduit G5 PDUs provides all SynapSense features from wired sensors – making wireless sensors optional. In addition to SynapSense Livelmaging™, customers with G5 and other PDUs can use the PowerImaging™ features to monitor their rack- and PDU-level power, along with temperature and humidity from the sensors attached to the PDUs.

Resolved Issues in SynapSense Software Release 7.6

The tables below describe the SynapSense Release 7.6 resolutions to identified issues.

Web Console

1. On the CRAH Summary page, the **Go Next** button now takes you to the next CRAH in alphanumeric order.
2. In Reports, clicking the Close button does not save changes.
3. When printing a Livelmaging Chart, the chart displays in the Print Preview window.
4. Right-click menu displays for all history charts.
5. More detailed Tenant SLA violation messages, showing which rack node/sensor triggered the alert.
6. Improved readability of Floor Plan node names.
7. A "Last Successful Read" status timestamp added to the System Status window. This informs users of when the most recent successful information was collected from any node in the whole system.

Livelmaging

1. With Livelmaging active, the Livelmaging legend continues to display when switching to another Data Center, Room, or Cage.

Known Issues

The following issues may be encountered during the installation or use of SynapSense products.

Web Console – Livelmaging

Customers with implementations that generate more than 250 images per 5-minute cycle should increase the Livelmaging memory settings to accommodate the volume of saved images. For example, a data center with eight floors and five rooms within each floor will generate 7 image layers x 5 rooms x 8 floors = 280 images per 5-minute cycle.

To change memory settings:

1. Go to C:\Program Files\SynapSense\SynapViz\SynapViz.ini.
2. Locate Virtual Machine Parameters=-Xrs -Xms256M -Xmx2048M.
3. Increase the setting to: Virtual Machine Parameters=-Xrs -Xms256M -Xmx3072M.

MapSense – Renaming Objects

Trying to click directly on an object to rename it can be problematic. A best practice for renaming is to select the object and then change the name in the Properties Panel.

Active Control Appliance

Sometimes, after a firmware update, you will need to perform a synched CAT reboot of the appliance units. Signs that this reboot is required include:

- Areas of Effect do not form.
- State transition of CRAC/CRAH does not initiate Area of Effect calculation.
- Room and CRAC/CRAH Summary pages do not fully render.

Appendix A: Related Information Products and Sites

See the following documents and websites for more information about Panduit's DCIM offerings and marketing tools. Hyperlinks to the Release 7.6 documentation will be available in the SynapSense 7.6 Release Notes.

- [Sales Enablement Portal](#)
- [SynapSense 7.6 Web Console User Manual](#)
- [SynapSense 7.6 MapSense User Manual](#)
- [SynapSense 7.6 Active Control User Manual](#)
- [SynapSense 7.6 Software Installation Guide](#)
- [SynapSense 7.6 Active Control Installation Guide](#)
- [SynapSense 7.6 Release Notes](#)