

# Bi-Metallic Lugs

Cost-Effective Connections for  
Aluminum Cable to Copper Busbar



**PANDUIT®**

Selection Guide

## Reliable Connections Between Aluminum and Copper — Without Compromise

When electrical systems call for aluminum cable and copper busbar connections, you need a lug that delivers safety, conductivity, and long-term performance. Panduit Bi-Metallic Lugs are engineered to meet those demands—simplifying installation while enhancing reliability. Designed for construction sites, panel shops, and OEM applications, these lugs help reduce installation time, cut down on rework, and lower material costs. With Panduit, you get a trusted solution that keeps your projects on track and your connections secure.

### Aluminum Cables Have the Same Reliability

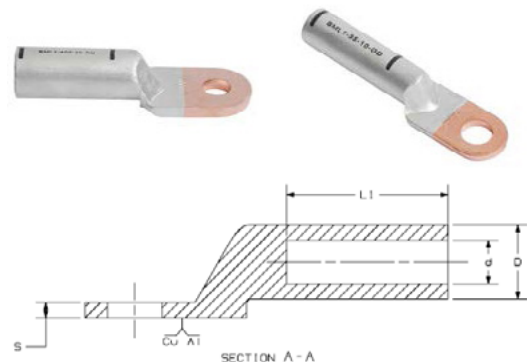
- The price of Aluminum is 1/3 of the price of Copper
- There are more origins and rich resources of Aluminum available
- Our BlackFin™ tools are compatible with crimping on Aluminum cables



Compliant to UL485 & 486A

### The Convenience of Using Aluminum Cables

- Aluminum cables are half the weight of Copper cables
- Aluminum cables are more flexible and convenient for use in various industries such as:
  - ▶ Construction
  - ▶ Panel Shops
  - ▶ OEM Applications
  - ▶ Renewable Energy
  - ▶ Data Centers



Part Number	AL Cable (mm <sup>2</sup> )	Strip Length (mm)	Screw	Size (mm)						PCS/ Box	Crimp Dies		Tools
				D	d	L	L1	W	S		Dies	# of Crimps	
BML1-35-10	35	41	M10	14	8.5	85	41	20	3.6	140	CD-920-2/0	2	CT-2931/STBT CT-2920/CCPBT CT-2940/STBT
BML1-50-10	50	43	M10	16	9.8	90	43	23	4	100	CD-920-3/0		
BML1-70-12	70	50	M12	18	11.5	102	50	26	4.6	80	CD-920-250	2	
BML1-95-12	96	54	M12	21	13.5	112	54	28	4.8	50	CD-920-300	2	
BML1-120-14	120	56	M14	23	15	120	56	28	4.8	40	CD-920-350	2	
BML1-150-14	150	58	M14	25	17	126	58	34	5.8	30	CD-920-400	2	
BML1-185-16	185	60	M16	27	18.6	133	60	37	6.5	30	CD-920-500	3	
BML1-240-16	240	63	M16	30	21.5	140	63	40	7	20	CD-920-600	3	
BML1-300-20	300	70	M20	34	24	158	70	45	8.5	10	CD-920-750	4	
BML1-400-20	400	75	M20	38	27	175	75	52	9.5	5	CD-940-750A	4	

## Proven Solutions For Your Most Pressing Needs

### Applications

- Electrical distribution panels
- Switchboards and switchgear
- Control panels
- Utility connections
- Industrial construction and OEMs

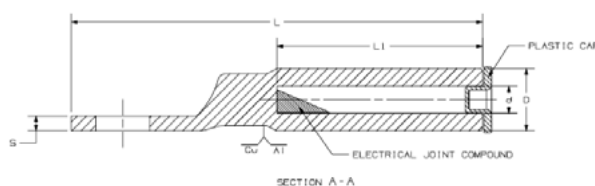
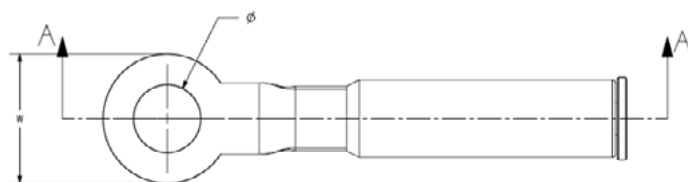
### Customer Pain Points Addressed

- Mismatched metal connections (aluminum to copper) that cause galvanic corrosion or conductivity issues
- Slow, inconsistent installations that cost time and labor
- Unreliable third-party or field-fabricated solutions
- Procurement complexity — need a standardized, trusted part from a single vendor

### Why Panduit?

- Pre-engineered for aluminum-to-copper reliability
- Designed to meet or exceed electrical and mechanical performance standards
- Backed by Panduit trusted quality and customer support
- Easy to specify and order — consistent part numbers, UL documentation, and compatibility





Part Number	AL Cable (mm <sup>2</sup> )	Strip Length (mm)	Screw	Size (mm)						PCS/ Box	Crimp Dies		Tools
				D	d	L	L1	W	S		Dies	# of Crimps	
BML2-38-8/12	38	47	M8/12	16	8.5	90	45	24	4	70	CD-920-250	2	CT-2931/STBT CT-2920/CCPBT CT-2940/STBT
BML2-60-10/12	60	47	M10/12	20	11.5	95	47	24	4.5	70	CD-920-250		
BML2-100-10/12	100	62	M10/12	20	13.5	95	47	24	4.5	30	CD-920-400	2	
BML2-150-10/12	150	62	M10/12	25	17	120	62	30	5.5	30	CD-920-400	2	
BML2-200-12	200	62	M12	32	18.6	133	65	35	6.2	30	CD-920-400	2	
BML2-250-12	250	65	M12	32	21.5	128	65	35	6.2	24	CD-920-500A	4	
BML2-325-12/16	325	72	M12/16	34	24	145	72	36	6.7	16	CD-920-750	4	
BML2-400-16	400	87	M16	42	27	170	87	40	7.5	12	CD-940-800A	4	

## Blackfin™ Crimping Tools

Part Number	Tool Output (tons)	Std. Crimp Time (sec)	CU, AL Cable & Splices (mm²)	Length (mm)	Width (mm)	Height (mm)	Weight (kg)	Battery Recharge (h)	Crimp Die Availability	Package Includes
CT-2931/STBT	12	13	10-400	324	76	428	7.2	1	Need to be purchased separately	CT-2931/STBT CT-2920/CCPBT CT-2940/STBT
CT-2920/CCPBT		10		337	76	443	6.5			
CT-2940/STBT		10-620	496	78	331	8				
CT-920		8	10-400	560	7.4	217	5.9			

CD-940-920DA

Adapter for CD-920 Dies in 15 tons compression tools



**Hydraulic Crimp Tool**  
CT-2931/STBT



**Hydraulic Crimp Tool**  
CT-2920/CCPBT



**Hydraulic Crimp Tool (Large)**  
CT-2940/STBT



**Manual Hydraulic Crimp Tool**  
CT-920



**Die Adapter**  
CD-940-920DA



## Success Depends on Your Crimp



1. Prepare terminals, dies, tools and cables.



2. The part number printed on the terminal is the same as the die number.



3. Install the die on the tool head.



4. The inside of the aluminum terminal contains a compound.



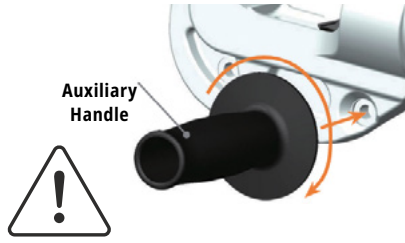
5. The 240 mm<sup>2</sup> terminal is compressed 4 times.



6. After the compression is over, the tool head will automatically return.



7. Compression jobs are easy and fast to complete.



Hydraulic tools can be heavy and may require additional assist handles.

\*Crimping correctly the first time promotes **safety** in your facility and contributes to **reduced financial risk** and **less equipment failures**

### Stronghold™ Corresponding Electrical Tape

**STRONGHOLD™**

Product Name	Part Number	Material	Color	Size L x W x H (mm)	Voltage V (kV)	Temperature Range	Ozone Resistance	UV Resistant	PCS/Box
HV Rubber Specialty Tape	ST23-075-30BK	ERP	Black	19 x 0.76 x 9.1	600 (~69)	Max 90°C	X	X	20
Rubber Specialty Tape	ST2242-150-15BK			38 x 0.76 x 4.6			X	X	35
Professional Grade PVC Electrical Tape	ST43-075-66BK	PVC		19 x 0.76 x 9.1	600	Max 105°C	-	-	20

➤ Visit our [Power and Grounding Hub](#) to get matched with your ideal solution.