

## QuickNet™ Harness Cable Assemblies Solution Guide for Switching Applications



## QuickNet™ Harness Cable Assemblies Solution Guide for Switching Applications

An end-to-end pre-terminated cabling system is an ideal solution for data centers especially when time for traditional cable installation, termination, and testing is limited. Pre-terminated cable assemblies offer a simple plug-and-go solution for links between LAN switches, SAN switches, servers, patch panels, and zone distribution areas, for new installations, or to enable easy additions to current infrastructure.

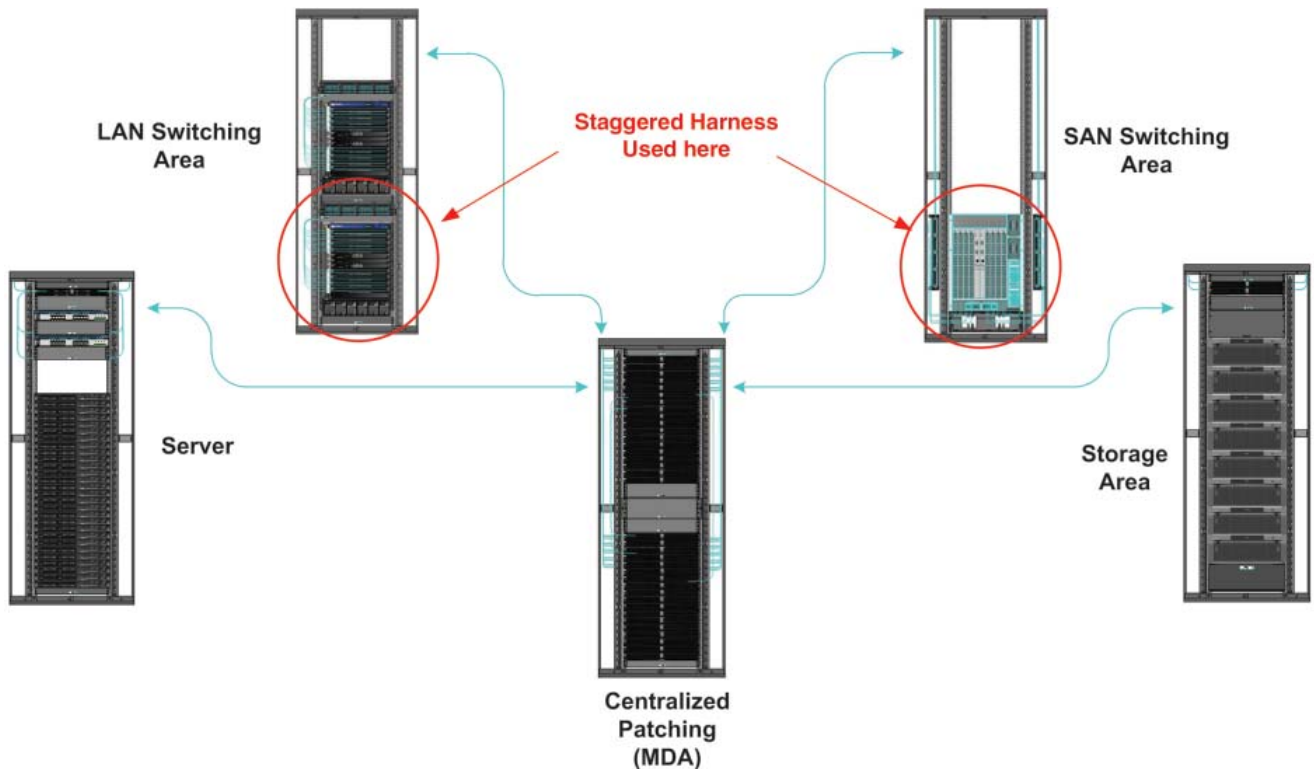
QuickNet™ Staggered Harness Assemblies allow for rapid deployment of multi-port patch field connectivity in high-density Storage Area Network (SAN) and Data Center LAN applications. Built with modular MPO connectivity and traditional LC connectivity, these assemblies provide compatibility, flexibility and system performance ensuring efficient use of cabinets and horizontal and vertical pathways through a small form factor cable. All QuickNet™ Staggered Harness Cable Assemblies are factory terminated and tested to deliver verified optical performance and reliability. OM3 fiber versions provide 10 Gb/s Ethernet network performance up to 300 meters\* and 16 Gb/s Fiber Channel network performance up to 100 meters\*. OM4 fiber versions provide 10 Gb/s Ethernet network performance up to 400 meters‡ and 16 Gb/s Fiber Channel network performance up to 125 meters\*. QuickNet™ Staggered Harness Assemblies are available as individual harness cable assemblies that are switch and application specific.







\*Stated reach valid when total link connector loss and media bandwidth is compliant with applicable standards (IEEE 802.3ae & ANSI FC-PI-6).

‡For "engineered" link of 1.0dB max total connector loss.



## Overall View of Data Center Cable Deployment



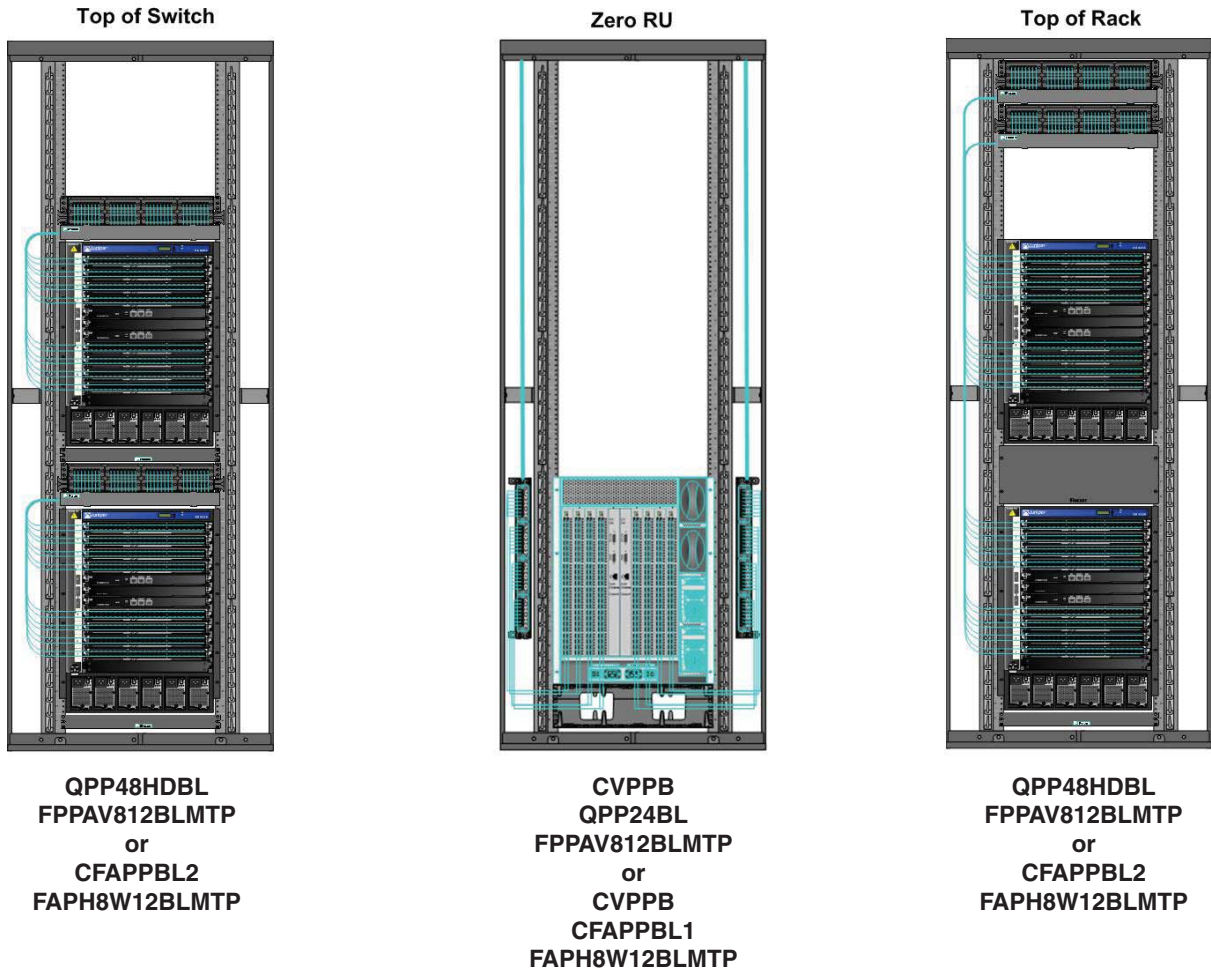
Brand	Product Name	No. of Blades	Blade Type	OM3* Staggered Harness Assembly Part Number	OM3* Staggered Harness Assembly Part Number	Notes	
<b>Ethernet Switching</b>							
Juniper	EX8216 (horizontal blades)		16	10 GbE 40-port	FX8RP8NUGSNxxxx* right to left pair (pair 1 shortest)	FX8RP8NUFSNxxxx* left to right pair pair 1 longest	10-8F Harness per Blade
				1 GbE 40-port	FXTRP8NUGSNxxxx* right to left pair (pair 1 shortest)	FXTRP8NUFSNxxxx* left to right pair (pair 1 longest)	8-12F Harness per Blade
	EX8208 (horizontal blades)		8	10 GbE 40-port	FX8RP8NUGSNxxxx* right to left pair (pair 1 shortest)	FX8RP8NUFSNxxxx* left to right pair pair 1 longest)	10-8F Harness per Blade
Dell Force 10	E1200i (horizontal blades)		14	10 GbE 48-port	FX8RP8NUGSNxxxx* top to bottom (pair 1 shortest)	—	12-8F Harness per Blade
Brocade	DCX Backbone (vertical blades)		8	4G, 8G or 16G FC 16-port	FX8RP8NUGSNxxxx* top to bottom (pair 1 shortest)	—	4-8F Harness per Blade
				4G, 8G or 16G FC 32-port	FX8RP8NUGSNxxxx* top to bottom (pair 1 shortest)	—	8-8F Harness per Blade
				4G, 8G or 16G FC 48-port	FX8RP8NUGSNxxxx* top to bottom (pair 1 shortest)	—	12-8F harnesses per blade
				8G or 16G FC 64-port	FX8HP6NDGSNxxxx* top to bottom (pair 1 shortest)	—	16-8F Harness per Blade without Duplex Clips (mSFP)
	48000 (horizontal blades)		8	4G, 8G or 16G FC 48-port	FX8RP8NUGSNxxxx* top to bottom (pair 1 shortest)	—	12-8F Harness per Blade
				8G or 16G FC 64-port	FX8HP6NDGSNxxxx* top to bottom (pair 1 shortest)	—	16-8F Harness per Blade without Duplex Clips (mSFP)
	DCX-4S (horizontal blades)		4	4G, 8G or 16G FC 16-port	FX8RP8NUGSNxxxx* left to right (pair 1 shortest))	FX8RP8NUFSNxxxx* right to left (pair 1 longest)	4-8F Harness per Blade
				4G, 8G or 16G FC 32-port	FX8RP8NUGSNxxxx* left to right (pair 1 shortest)	FX8RP8NUFSNxxxx* right to left (pair 1 longest)	8-8F Harness per Blade
4G, 8G or 16G FC 48-port				FX8RP8NUGSNxxxx* left to right (pair 1 shortest)	FX8RP8NUFSNxxxx* right to left (pair 1 longest)	12-8F Harness per Blade	

\*Harness are available in lengths of 1-30m or 3-100F. xxxx represents length starting with UOM (F/M) followed by 3 digit length. OM3 Staggered Harness Assembly is listed. For OM4 Staggered Harness Assembly, replace "X" in part number with "Z". Example: FX8HP6NDGSNxxxx would be FZ8HP6NDGSNxxxx

The following is a list of comparable switches. The Brocade switches and OM3 Staggered Harness Kit Assembly part numbers shown in the above table are applicable for the following switch manufacturers and switch models.

Switch Comparison Chart				
Manufacturer	Brocade	IBM	HP	EMC
Switch Model	DCX	768B	SN8000B DC	ED-DCX-B
	48K	N/A	N/A	ED-48000B
	DCX-4S	384B	SN8000B DC-04	ED-DCX4S-B

# QuickNet™ Harness Cable Assemblies Switch Configurations



<b>Part Numbers</b>	<b>Descriptions</b>
<b>QPP24BL</b>	QuickNet™ 24-Port Patch Panel
<b>QPP48HDBL</b>	QuickNet™ 48-Port High Density Patch Panel
<b>CFAPPBL1</b>	1 RU Standard Fiber Adapter Panel
<b>CFAPPBL2</b>	2 RU Standard Fiber Adapter Panel
<b>FAPH8W12BLMTP</b>	QuickNet™ MTP* Fiber Adapter Panel
<b>FPPAV812BLMTP</b>	QuickNet™ SFQ MTP* Fiber Adapter Panel
<b>CVPPB</b>	Mounting Bracket for Vertical Mounting

## About Panduit

Panduit is a world-class developer and provider of leading-edge solutions that help customers optimize the physical infrastructure through simplification, increased agility and operational efficiency. Panduit's [Unified Physical Infrastructure<sup>SM</sup> \(UPI\)](#) based solutions give Enterprises the capabilities to connect, manage and automate communications, computing, power, control and security systems for a smarter, unified business foundation. Panduit provides flexible, end-to-end solutions tailored by application and industry to drive performance, operational and financial advantages. Panduit's global manufacturing, logistics, and e-commerce capabilities along with a global network of distribution partners help customers reduce supply chain risk. Strong technology relationships with industry leading systems vendors and an engaged partner ecosystem of consultants, integrators and contractors together with its global staff and unmatched service and support make Panduit a valuable and trusted partner.

[www.panduit.com](http://www.panduit.com) • [cs@panduit.com](mailto:cs@panduit.com) • 800-777-3300

FBAN06–WW-ENG 3/2014

## Copyright and Trademark Information

Brocade is a registered trademark of Brocade Communications Systems, Inc.

Dell Force 10<sup>®</sup> is a trademark of Dell Force 10 Networks.

Juniper is a registered trademark of Juniper Networks, Inc.

MTP is a registered trademark of US Conec Ltd.

*NOTE: The information contained herein is intended as a guide for use by persons having technical skill at their own discretion and risk. Panduit disclaims any liability arising from any information contained herein or for the absence of same.*