


J-Mod™ Future Ready Cable Support System

Let Panduit Support Your Cabling Systems

The J-Mod™ Cable Support System is a versatile solution for routing sensitive communication cables. The modular design allows for complete flexibility of assembly in multiple configurations and allows expansion of the system without disturbance of an existing installation. The non-metallic J Hook features complete horizontal and vertical 1" bend radius control, which helps prevent degradation of cable performance. 



J Hook shown with Tak-Ty® Cable Tie



Ceiling Mount Bracket



Drop Wire Bracket



Threaded Rod Bracket



Screw-On Beam Clamp Bracket

Key Features

Benefits

Unique patent pending design	<ul style="list-style-type: none"> Allows user to install additional J Hooks without disturbance of an existing installation Metal chaining brackets provide complete metallic support Eliminates the need for a metal bracket or threaded rod to extend below J Hook Prevents accidental disengagement after chaining bracket and J Hooks are installed
Complete horizontal and vertical 1" bend radius control	<ul style="list-style-type: none"> Helps prevent degradation of cable performance Prevents pinch points that could cause damage to cable
Non-metallic J Hook	<ul style="list-style-type: none"> Prevents cables from coming in contact with metal
Strong and durable materials	<ul style="list-style-type: none"> Manages and supports a large capacity of cables Ability to manage and support a large capacity of cables
Modular design	<ul style="list-style-type: none"> Provides flexibility for assembly in multiple configurations
Pre-riveted brackets	<ul style="list-style-type: none"> Allows for attachment to ceilings, beams, threaded rods, and drop wires to meet requirements of a variety of applications
Cable tie channel	<ul style="list-style-type: none"> Allows user to easily install 3/4" Tak-Ty® Cable Ties to retain cable bundle
Snap lock attachment with I-Beam member	<ul style="list-style-type: none"> Eases assembly and provides a strong and secure attachment of J Hooks to the mounting bracket and chaining brackets

J-Mod™ Cable Support System

Typical Installation Instructions

Step 1: Determine Installation Type

A. If mounting to a structural member, choose appropriate bracket and use with J Hook JMJD2-X20.

B. If mounting to wall, select J Hook JMJD2W-X20 and secure with two user supplied screws to complete installation.



Ceiling Mount Bracket



Drop Wire Bracket



Threaded Rod Bracket



Screw-On Beam Clamp Bracket



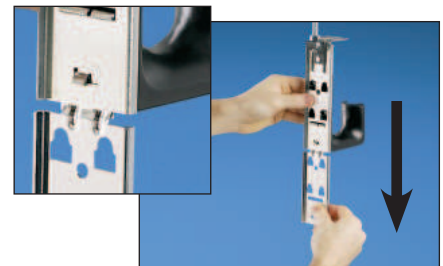
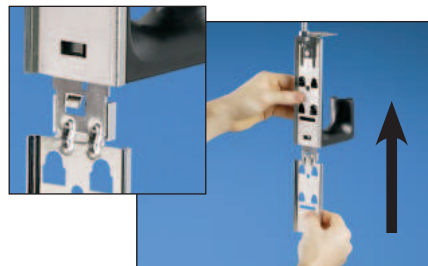
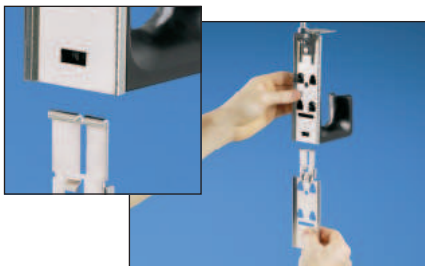
Step 2: First-Level Installation

Align snap lock attachment of J Hook with holes of the chosen bracket and snap J Hook into position. If additional capacity is needed, a second J Hook can be snapped on the back. (The photos below show an example of a single-level threaded rod bracket installation.)



Step 3: Addition of Chaining Bracket

If additional levels are required, install the chaining bracket JMCD-X. To install the chaining bracket, align it under the assembly. Slide chaining bracket between the J Hook and the metal bracket until it snaps into place. The chaining bracket can be inserted in only one orientation. After the chaining bracket snaps into place, pull down to fully engage and create a continuous metal backbone.



Step 4: Second-Level Installation

Attach J Hooks as explained in first-level installation above. Repeat for additional J Hooks as necessary. If required, one additional chaining bracket may be installed to create a maximum third-level installation. (Final assembly shown is a second-level installation consisting of one threaded rod bracket, one chaining bracket, and four J Hooks.)



Ordering Information



JMJDW-X20



JMJDH-X20



JMCD-X



JMCD25-1-X



JMCD25-3-X



JMDDW-1-X



JMDDW-3-X



JMTRB38-1-X



JMTRB38-3-X



JMSSCB87-1-X



JMSSCB87-3-X

Part Number	Part Description	Material*	Std. Pkg. Qty.	Std. Ctn. Qty.
J Hook with Maximum 2" Bundle Capacity				
JMJDW-X20*	J Hook for wall mount applications only. Two 1/4" (M6) mounting holes for user supplied screws.	Nylon 6.6	10	50
JMJDH-X20*	J Hook with snap lock attachments for use with all brackets listed below.	Nylon 6.6	10	50
Chaining Bracket				
JMCD-X	Chaining bracket to extend J-Mod® capacity one level. Capacity: three levels maximum. For use with all single-level mounting brackets listed below.	Zinc Plated Steel	10	50
Ceiling Mount Brackets				
JMCD25-1-X	Single-level ceiling mount bracket with one 1/4" (M6) mounting hole.	Galvanized Steel	10	50
JMCD25-3-X**	Three-level ceiling mount bracket with one 1/4" (M6) mounting hole. Maximum capacity of six J Hooks.	Galvanized Steel	10	50
Drop Wire Brackets				
JMDDW-1-X	Single-level drop wire bracket. Attaches to #12 wire or 1/4" (6.4mm) plain rod. Maximum capacity of one J Hook per level.	Galvanized Steel with Metal Attachments	10	50
JMDDW-3-X**	Three-level drop wire bracket. Attaches to #12 wire or 1/4" (6.4mm) plain rod. Maximum capacity of one J Hook for each of three levels. Maximum static load of 40 pounds.	Galvanized Steel with Metal Attachments	10	50
Threaded Rod Brackets				
JMTRB38-1-X	Single-level threaded rod bracket. Accepts 1/4" – 3/8" (6.4mm – 9.5mm) threaded rod.	Galvanized Steel with Metal Attachments	10	50
JMTRB38-3-X**	Three-level threaded rod bracket. Accepts 1/4" – 3/8" (6.4mm – 9.5mm) threaded rod. Maximum capacity of six J Hooks.	Galvanized Steel with Metal Attachments	10	50
Screw-On Beam Clamp Brackets				
JMSSCB87-1-X	Single-level screw-on beam clamp bracket for use with flanges up to 3/4" (19.1mm) thick.	Galvanized Steel with Metal Attachments	10	50
JMSSCB87-3-X**	Three-level screw-on beam clamp bracket for use with flanges up to 3/4" (19.1mm) thick. Maximum capacity of six J Hooks.	Galvanized Steel with Metal Attachments	10	50

Cable Capacity

Part Number	Category 5e (0.193")	Category 6 (0.236")	Category 6A (0.310")
JMJDH and JMJDW	70	50	30

Tak-Ty® Cable Ties Recommended for Use with the J-Mod™ Cable Support System

Part Number	Part Description	Std. Pkg. Qty.‡	Std. Ctn. Qty.
HLS3S-X0	3/4" Tak-Ty® Cable Ties – 12" strips – Black	10	100
HLSP3S-X12‡‡	3/4" Tak-Ty® Cable Ties – 12" strips – Maroon – UL Listed‡‡	10	100



Tak-Ty® Cable Tie routed through cable tie channel

**Not for use with chaining brackets.

*Listed in accordance with CAN/ULC S102.2 when mounted as single units or in pairs. Minimum spacing of 4 ft. (1220mm) required between mount points. (Flame Spread Rating = 0, Smoke Developed Classification = 30).

‡Order number of pieces required in multiples of Std. Pkg. Qty.

‡‡UL Listed for use in air handling spaces per NEC Section 300-22 (c) and (d).

J-Mod™ Cable Support System

Communication Cable Management Accessories for Ladder Racks



**Threaded Rod Covers
(TRC18FR-X8)**



**Stackable Cable Rack Spacers
(CRS4-125-X)**



**Waterfall Accessories
(CMW-KIT)**

Other Cable Management Accessories



**D-Rings
(CMVDR2)**



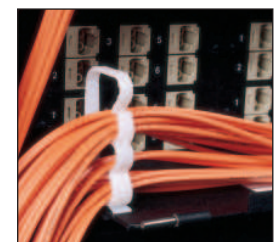
**Tak-Ty® Hook & Loop
Cable Tie Mounts
(ABMT-A-C)
(ABMT-A-C20)**



**Bundle Retainers
(BR2-1.3)**



**Flat Pan-Post™
Standoffs
(PPF2SV-S25-V)**



**Vertical Saddles
(VWSDC-C)**

WORLDWIDE SUBSIDIARIES AND SALES OFFICES

PANDUIT CANADA
Markham, Ontario
cs-cdn@panduit.com
Phone: 800.777.3300

PANDUIT EUROPE LTD.
London, UK
cs-emea@panduit.com
Phone: 44.20.8601.7200

PANDUIT SINGAPORE PTE. LTD.
Republic of Singapore
cs-ap@panduit.com
Phone: 65.6305.7575

PANDUIT JAPAN
Tokyo, Japan
cs-japan@panduit.com
Phone: 81.3.6863.6000

PANDUIT LATIN AMERICA
Guadalajara, Mexico
cs-la@panduit.com
Phone: 52.33.3777.6000

PANDUIT AUSTRALIA PTY. LTD.
Victoria, Australia
cs-aus@panduit.com
Phone: 61.3.9794.9020

For a copy of Panduit product warranties, log on to www.panduit.com/warranty

For more information

Visit us at www.panduit.com

Contact Customer Service by email: cs@panduit.com
or by phone: 800.777.3300

PANDUIT®

©2014 Panduit Corp.
ALL RIGHTS RESERVED.
CMCB01--WW-ENG
Replaces WW-WACB19
9/2014