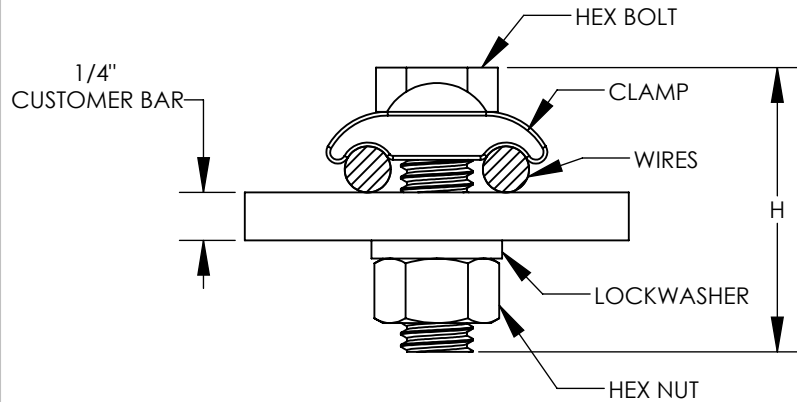
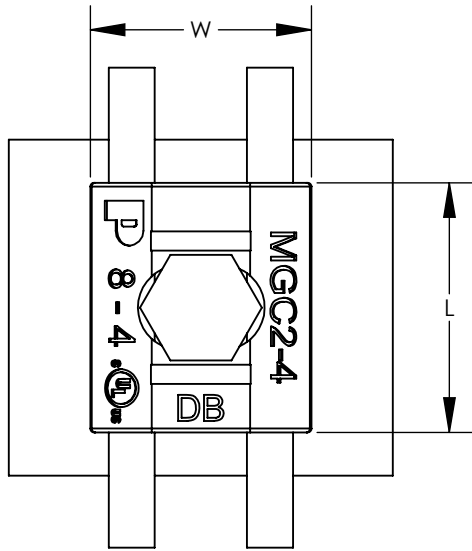


THIS COPY IS PROVIDED ON A RESTRICTED BASIS AND IS NOT TO BE USED IN ANY WAY DETRIMENTAL TO THE INTERESTS OF PANDUIT CORP.



PART NUMBER	L	W	H	WIRE RANGE (2)	THREAD
MGC2-4-Q	1.3	1.2	1.5	SOLID: 8 AWG - 4 AWG STRANDED: 8 AWG - 4 AWG	3/8-16
MGC2-2/0-Q	1.5	1.5	1.7	SOLID: 4 AWG - 2/0 AWG STRANDED: 4 AWG - 2/0 AWG	
MGC2-250-X	1.3	2.0	2.1	SOLID: 2/0 AWG - 4/0 AWG STRANDED: 2/0 AWG - 250 kcmil	1/2-13
MGC2-500-X	1.6	2.5	2.3	SOLID: N/A STRANDED: 300 kcmil - 500 kcmil	

NOTES:

1. MATERIAL:
BODY - COMMERCIAL BRONZE, 80% MIN COPPER CONTENT
HARDWARE - SILICON BRONZE
2. WIRE RANGE APPLIES TO BOTH SIDES OF CLAMP.
WIRES DO NOT NEED TO BE EQUAL SIZE.
3. DIMENSIONS IN INCHES
4. PACKAGING QTY:
Q = 25
X = 10

REV	DATE	BY	CHK	APR	DESCRIPTION	ECN
01	5/17	JHNU	DAOS	RGB	REVISED WIRE RANGE IN TABLE	
00	5/17	JHNU	DAOS	RGB	DRAWING RELEASED	

TITLE		MGC2 SERIES CABLE TRAY CLAMPS CUSTOMER DRAWING	
ITEM REVISION NAME	00127LEB/01		
DATASET FILE NAME	00127LEB-DC/01.SLDDRW		
UNLESS OTHERWISE SPECIFIED, DIMENSIONAL TOLERANCES ARE: IN [mm]		PANDUIT	
.X ± .1	.XXX ±		
.XX ±	ANGLES ±	SEE NOTES	
THIRD ANGLE PROJECTION			
DRAWN BY	DATE	CHK	SCALE
JHNU	5/17	DAOS	N/A
DRAWING NUMBER			00127LEB-DC
SHEET 1 OF 1			SIZE A