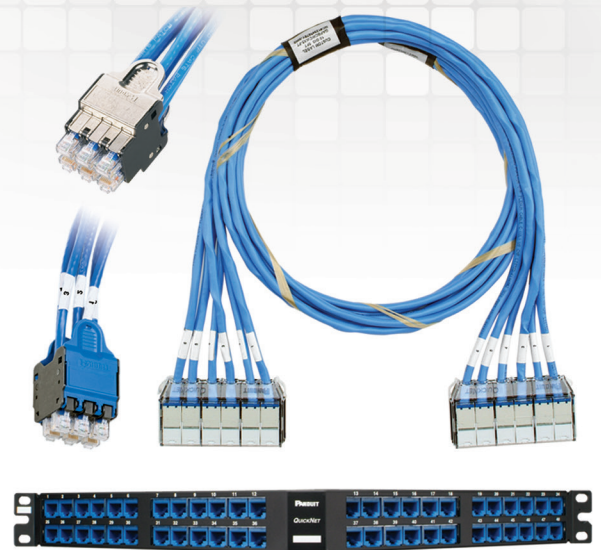


QuickNet™ Copper Cabling System

The QuickNet™ Copper Cabling System provides a custom, pre-terminated cabling solution which meets unique requirements. Fast and simple to install, the system enables quick network deployment, increased reliability and lowest total cost of ownership as compared to field terminated installations. Engineered for maximum design flexibility and high rack density utilisation (up to 48 ports in one rack space), the system offers 100% factory tested pre-terminated cable assemblies in custom lengths and configurations. QuickNet™ Angled and Flat Patch Panels accept QuickNet™ Pre-Terminated Cassettes, Patch Panel Adapters, and blanks, which snap in and out, with one hand, for quick installation.



Key Features	Benefits
Pre-terminated	Controlled factory environment provides consistent network performance while reducing installation time and on-site waste as compared to field-terminated installations
100% factory tested	Eliminates the time and cost associated with testing on-site and ensures verified performance (permanent link test data supplied with each cable assembly)
Wide range of cable types and performance levels	Category 6 UTP/FTP and Category 6A UTP/STP performance levels available in LSZH cable fire rating
Wide range of termination configurations and custom lengths	Cable assemblies allow customization including pre-terminated cassettes, jack modules, modular plugs, and/or unterminated cable options to provide design flexibility for all installations in lengths from 3 to 90m (0.5m increments)
Modular design	Pre-terminated cassettes snap in and out of QuickNet™ Patch Panels and include an integral release tab to ensure easy on-site moves, adds, and changes Patch panel adapter accepts Mini-Com™ Modules for UTP, fibre optic and audio/visual applications
Standard and high-density solution	QuickNet™ Patch Panels in angled and flat designs enable 24 and 48-ports in one rack unit for efficient rack space utilisation
Assembly identification	Each cable assembly label includes part number, performance level, and serialised quality assurance number for future traceability; custom labels available upon request
Integrated bonding and grounding	Innovative shielded cassette and shielded jack design provides linear conductive path for proper bonding to QuickNet™ Shielded Metal Patch Panels
Keyed connectivity (optional)	Mechanically and visually distinguished connectivity prevents unintentional insertion into unlike keyed or non-keyed ports, offering additional network design flexibility and versatility accommodating the need for a more discrete network

Key Applications Include:

- Each QuickNet™ Cable Assembly is factory tested to electrical permanent link specifications
- TX6A™ 10Gig™ Copper Cabling Systems exceed requirements of ANSI/TIA-568-C.2, ISO 110801 Category 6A/Class E_A Edition 2.1, and IEEE 802.3an standard for supporting 10GBASE-T requirements
- LSZH rated cables will be marked with the appropriate CPR Euroclass for the cable. Assemblies are not covered by CPR.
- TX6000™ Copper Cabling System exceeds ANSI/TIA-568-C.2 and ISO 11801 2nd Edition Category 6/Class E standards
- Jack modules utilise patented Giga-TX™ Technology which optimises performance by maintaining cable pair geometry and eliminates conductor untwist
- Modular plugs meet all applicable ANSI/TIA-568-C.2 requirements and exceed IEC 60603-7 specifications

SFP28 Passive Direct Attach Copper (DAC) Cable Assemblies

QuickNet™ Cable Assembly Ordering Information

Example:

Q	Z	L	X	C	B	C	B	X	X	3	M	5	E
1	2	3	4	5	6	7	8	9	10	11	12	13	14

Part number QZLXCBCBX3M5E represents a 3.5 metre QuickNet™ Cable Assembly constructed of White, LSZH, TX6A™ 10Gig™ UTP Copper Cable, bundled with expandable sleeving, with pre-terminated cassettes on each end that contain Blue TX6A™ 10Gig™ UTP Jack Modules.

1 – Q = QuickNet™

2 – Performance Level

A = Category 6A UTP (TX6A™ 10Gig™ 1st Gen)

Z = Category 6A UTP (TX6A™ 10Gig™ with MaTriX)

X = Category 6A UTP (TX6A-SD™ 10Gig™ with SD MaTriX)

H = Category 6A S/FTP (TX6A™ 10Gig™)

U = Category 6A STP Stranded (TX6A™ 10Gig™)

T = Category 6A U/FTP (TX6A™ 10Gig™)

C = Category 6 UTP (TX6000™)

L = Category 6 F/FTP (TX6000™)

3 – L = LSZH

4 – X = Market cable colour

5 – Termination End 1

C = Cassette, J = Jack modules

K = Jack modules staggered right

L = Jack modules staggered left

6 – Termination End 1 Jack Module Colour*

A = Arctic White, B = Blue, E = Electric Ivory,

G = Green, H = Off White, I = International Grey,

L = Black, O = Orange, R = Red, V = Violet,

W = White, Y = Yellow

(Shielded jack modules available in Black only),

7 – Termination End 2

A = Plug Pack*

F = Recessed plug pack

C = Cassette, J = Jack modules

P = Modular plugs

K = Jack modules staggered left

L = Jack modules staggered right

Q = Modular plugs staggered right

S = Modular plugs staggered left

U = Unterminated

O = Unterminated with cassette and jack

modules for on-site termination

8 – Termination End 2 Jack Module Colour*

A = Arctic White, B = Blue, E = Electric Ivory,

G = Green, H = Off White, I = International Grey,

L = Black, O = Orange, R = Red, V = Violet,

W = White, Y = Yellow, S = Silver (Recessed

plug pack only) X = Colour option not available

for modular plugs or unterminated options

(Shielded jack modules available in Black only)

9 – Assembly Options

P = Pulling Eye

X = No assembly options requested

10 – Custom Labelling**

L = Custom assembly label

C = Custom cable labels

B = Custom assembly and cable labels

X = No custom labels requested

11 – Assembly Length

3 – 90 metres

12 – M = Metre Length

13 – Additional Length (0.5 increments)

0 = No partial length

5 = 0.5m partial length

14 – Bundle Option

Leave blank for standard Kevlar thread wrap

E = Expandable sleeving

G = 5m sleeve on each end

QuickNet™ Patch Panels and Accessories Ordering Information

Part Number	Part Description	No. of Rack Spaces	Std. Pkg. Qty.
QAPP24BL	Angled 24-port patch panel.	1	1
QAPP48HDBL	Angled 48-port high density patch panel.	1	1
QAPP48HDVNSBL	Angled 48-port high density patch panel with pre-printed vertical numbering on each port for switch applications.	1	1
QPP24BL	Flat 24-port patch panel.	1	1
QPP48HDBL	Flat 48-port high density patch panel.	1	1
QPP48HDVNSBL	Flat 48-port high density patch panel with pre-printed vertical numbering on each port for switch applications.	1	1
QSP24BL	Flat 24-port shielded all metal patch panel, for use with shielded QuickNet™ Pre-Terminated Cassettes and Shielded Jack Modules.	1	1
QSP48HDBL	Flat 48-port shielded all metal patch panel, for use with shielded QuickNet™ Pre-Terminated Cassettes and Shielded Jack Modules.	1	1
QASP24BL	Angled 24-port shielded all metal patch panel, for use with shielded QuickNet™ Pre-Terminated Cassettes and Shielded Jack Modules.	1	1
QASP48HDBL	Angled 48-port shielded all metal patch panel, for use with shielded QuickNet™ Pre-Terminated Cassettes and Shielded Jack Modules.	1	1
QPPABL	Patch panel adapter accepts all Mini-Com™ Modules for multimedia applications.	—	1
QPPBBL	Patch panel blank reserves space for future use and promotes proper airflow and cooling.	—	1
QPPLC24	Label/label cover kit for 24-port QuickNet™ Patch Panels.	—	1
QPPRT	Removal tool allows individual cables to be removed from plug pack without disruption of other network connections.	—	1
QPPLD6-X	Lock-in device prevents unauthorized removal of cables from the plug pack.	—	10
QPPN6***	QuickNet™ Plug Pack individual housing accepts six RJ45 modular plugs.	—	1
QPPR6S	QuickNet™ Recessed Plug Pack individual housing accepts six RJ45 modular plugs.	—	1

^ One rack space = 1.75" (44.45mm).

* Colour option not available for modular plugs or unterminated options. All modular plugs are clear and shielded jack modules are black. Plug packs available in B = Blue, W = White, R = Red or L = Black.

** Custom cable assembly labels are available up to eighteen characters; individual cable labels are available up to fifteen characters.

***For colour designation, add BL (Black), BU (Blue), RD (Red) or WH (White). For 8 or 12 pack configurations, replace 6 in part number with 8 or 12. For example, the part number for a blue, 8-pack plug pack is QPP8BU.

All connectivity is wired T568B. Permanent link test results shipped with each cable assembly. All custom cable assemblies are non-refundable, minimum order quantity one.

Market cable colour is White for all above cable options with the exception of U (Category 6A Stranded TX6A™ 10Gig™), which is International Grey.

WORLDWIDE SUBSIDIARIES AND SALES OFFICES

PANDUIT US/CANADA
Phone: 800.777.3300

PANDUIT EUROPE LTD.
London, UK
cs-emea@panduit.com
Phone: 44.20.8601.7200

PANDUIT SINGAPORE PTE. LTD.
Republic of Singapore
cs-ap@panduit.com
Phone: 65.6305.7575

PANDUIT JAPAN
Tokyo, Japan
cs-japan@panduit.com
Phone: 81.3.6863.6000

PANDUIT LATIN AMERICA
Guadalajara, Mexico
cs-la@panduit.com
Phone: 52.33.3777.6000

PANDUIT AUSTRALIA PTY. LTD.
Victoria, Australia
cs-aus@panduit.com
Phone: 61.3.9794.9020

For a copy of Panduit product warranties, log on to www.panduit.com/warranty

For more information

Visit us at www.panduit.com

Contact Customer Service by email: cs@panduit.com

or by phone: 800.777.3300

PANDUIT™

©2017 Panduit Corp.
ALL RIGHTS RESERVED.
COCB37--SA-UKE
8/2017