

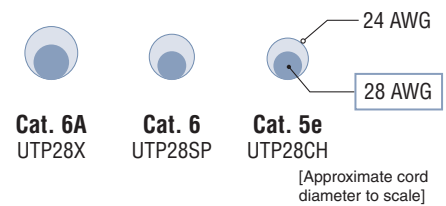
## High Density Cabling Solutions

Family of innovative 28 AWG solutions which increase cable pathway capacities, enable higher density layouts, and improve ease of cable management.

Best for:

- Overcrowded pathways in **existing** telecom rooms and data centers
- Enabling smaller pathways in **new** telecom rooms and data centers
- Where <100 meter maximum channel lengths are OK

## 28 AWG Size Comparison



## 28 AWG Patch Cords

Less than 50% the size of traditional 24 AWG patch cords  
Provide up to 96 meters of channel length (when using 6 meters of patch)

Support PoE, PoE+, and PoE++  
100% tested to applicable component limits  
1.9 de-rating factor for all cords  
Available in many standard colors



UTP28SP#M^  
(UTP)



STP28X#M^  
(F/UTP)

Part Number	Cord Diameter	Performance	Description
UTP28X#M^	4.7mm	Category 6A	Category 6A Performance 28 AWG UTP CM/LSZH Patch Cord
UTP28SP#M^	3.8mm	Category 6	Category 6 Performance 28 AWG UTP CM/LSZH Patch Cord
UTP28CH#M^	3.8mm	Category 5e	Category 5e Performance 28 AWG UTP CM/LSZH Patch Cord

# = Length in meters. Lengths 0.5 to 10 meters (in 0.5 meter increments), 11 to 20 meters (in 1 meter increments), and 25 to 40 meters (in 5 meter increments).

^ = Color. No suffix designates Off White color. For other colors, suffix: BL (Black), BU (Blue), GR (Green), GY (Gray), OR (Orange), RD (Red), VL (Violet), or YL (Yellow); PK (Pink) is available as cord color option for UTP28SP only.

STP28X#M^	4.7mm	Category 6A	Category 6A Performance 28 AWG F/UTP CM/LSZH Patch Cord
-----------	-------	-------------	---

# = Length in meters. Lengths 0.5 to 10 meters (in 0.5 meter increments), 11 to 20 meters (in 1 meter increments), and 25 to 40 meters (in 5 meter increments).

^ = Color. Add suffix: BL (Black), BU (Blue), GR (Green), IG (Int'l Gray), OR (Orange), RD (Red), VL (Violet), YL (Yellow).

## 28/30 AWG Modular Jacks



CJT688TGAW

100% tested and individually serialized  
Required for terminating to wires of Panduit 28 AWG patch cords

Terminates 28 AWG solid/stranded and 30 AWG solid conductors

Part Number	Performance	Description
CJT6X88TG**	Category 6A	Mini-Com® TX6A™ 28/30 AWG UTP Jack Module
CJT688TG**	Category 6	Mini-Com® TX6™ PLUS 28/30 AWG UTP Jack Module
CJT5E88TG**	Category 5e	Mini-Com® TX5e™ 28/30 AWG UTP Jack Module
CJST6X88TG**Y	Category 6A Shielded	Mini-Com® TX6A™ 28/30 AWG STP Jack Module

\*\* = Color. Add suffix: IW (Off White), EI (Electric Ivory), IG (Int'l Gray), AW (Arctic White), BL (Black), BU (Blue), GR (Green), RD (Red), OR (Orange), VL (Violet), YL (Yellow), WH (White), BR (Brown). CSJT6X88TG\*\*Y is only available in BL (Black) (default, no code needed), BU (Blue), GR (Green), RD (Red), VL (Violet) and YL (Yellow).

## 28 AWG Horizontal Copper Cabling



PUD6C2804WH-CE

Smaller size improves fill capacity of cable managers  
Flexible cable simplifies cable management and routing

Delivers 1000BASE-T performance at a channel reach of up to 50 meters; channel compliant to ANSI/TIA-568-C.2 Category 6 and ISO 11801 Class E standards

Part Number	Performance	Description
PUD6C2804**-CE	Category 6	TX6-28™ 4-pair UTP twisted pair horizontal cabling, 28 AWG, CM (UL 1685), LSZH (IEC60332-1 and 60332-3), 305m carton.

\* = Color. Add suffix: BU (Blue); WH (White).

## 28 AWG Modular Plugs



SP628-C

Required for terminating to wires of Panduit 28 AWG patch cords

Patented tangle-free latch prevents snags and provides easy release

Part Number	Performance	Description
SP628-C	Category 6A & 6	TX6™ PLUS 28 AWG UTP Modular Plug, 100 Pack
MP528-C	Category 5e	PanPlug™ 28 AWG UTP Modular Plug, 100 Pack

Plug housings and boots are clear.

## High Density Cabling Solutions

### 28 AWG Switch Harnesses



QPPSDWBL\*\*M



QPPSDWAL\*\*M



QPCSDWALL\*\*M

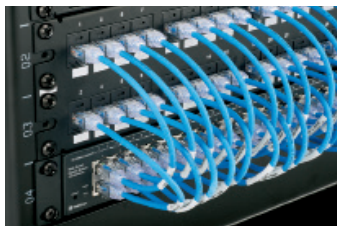
Readily available harnesses using Panduit 28 AWG components for common switch-to-panel cabling approaches  
Reduces network rack cabling installation time by 75% or more compared to loose cord cabling

Multiple cable bundle counts, lengths, and configurations available  
Enables quick and easy routing within tight spaces  
Ensures cleanly dressed IDF/MDF cabling

Part Number	Performance	Description
QPPSDWAL**M	Category 6	6-Cable Switch Patching Harness, Cat 6 28 AWG White UTP CM/LSZH Cable, Black Plug Pack to Modular Plugs
QPPSDWBL**M	Category 6	12-Cable Switch Patching Harness, Cat 6 28 AWG White UTP CM/LSZH Cable, Black Plug Pack to Modular Plugs
QPCSDWALL**M	Category 6	6-Cable Switch Port Harness, Cat 6 28 AWG White UTP CM/LSZH Cable, Black Plug Pack to Pre-terminated Cassette with Black Jacks
QPCSDWBL**M	Category 6	12-Cable Switch Port Harness, Cat 6 28 AWG White UTP CM/LSZH Cable, Black Plug Pack to Pre-terminated Cassette with Black Jacks
QPCSDW6XL**M	Category 6	6-Cable Switch Port Harness, Cat 6 28 AWG White UTP CM/LSZH Cable, Loose Plugs to Pre-terminated Cassette with Black Jacks
QPCSDWWXL**M	Category 6	12-Cable Switch Port Harness, Cat 6 28 AWG White UTP CM/LSZH Cable, Loose Plugs to Pre-terminated Cassette with Black Jacks

\*\* = Length in meters, 1-5m (every 1m).

### 28 AWG Switch Patching Cords & Kits



UTP28SP8INBU-48

Convenient cords and kits for direct 1:1 port patching of switch to panel  

- Uses 8-inch Category 6 28 AWG patch cords to directly connect from switch port to adjacent patch panel

Kits include 48 patch cords, vertically numbered patch panel, and strain relief bar  
Eliminates need for horizontal manager, reducing cost & providing more RU space

#### Patch Cords only

Part Number	Performance	Description
UTP28X8IN^	Category 6A	8-inch Category 6A Performance 28 AWG UTP CM/LSZH Patch Cord
UTP28X0.2M^	Category 6A	0.2m Category 6A Performance 28 AWG UTP CM/LSZH Patch Cord
UTP28SP8IN^	Category 6	8-inch Category 6 Performance 28 AWG UTP CM/LSZH Patch Cord

^ For standard colors other than Off White, add suffix BL (Black), BU (Blue), GR (Green), GY (Gray), OR (Orange), RD (Red), VL (Violet), or YL (Yellow); PK (Pink) is available as cord color option for UTP28SP only.

Add -48 to order a bulk pack of 48 patch cords.

#### Switch Patching Kits

CPP48KFVPCWH	Category 6	48-Port Switch Patching Kit with Off-White Patch Cords, Vertically Numbered Patch Panel, and Strain Relief Bar
CPP48KFVPCBU	Category 6	48-Port Switch Patching Kit with Blue Patch Cords, Vertically Numbered Patch Panel, and Strain Relief Bar

#### WORLDWIDE SUBSIDIARIES AND SALES OFFICES

PANDUIT CANADA  
Markham, Ontario  
cs-cdn@panduit.com  
Phone: 800.777.3300

PANDUIT EUROPE LTD.  
London, UK  
cs-emea@panduit.com  
Phone: 44.20.8601.7200

PANDUIT SINGAPORE PTE. LTD.  
Republic of Singapore  
cs-ap@panduit.com  
Phone: 65.6305.7575

PANDUIT JAPAN  
Tokyo, Japan  
cs-japan@panduit.com  
Phone: 81.3.6863.6000

PANDUIT LATIN AMERICA  
Guadalajara, Mexico  
cs-la@panduit.com  
Phone: 52.33.3777.6000

PANDUIT AUSTRALIA PTY. LTD.  
Victoria, Australia  
cs-aus@panduit.com  
Phone: 61.3.9794.9020

For a copy of Panduit product warranties, log on to [www.panduit.com/warranty](http://www.panduit.com/warranty)

For more information

Visit us at [www.panduit.com](http://www.panduit.com)

Contact Customer Service by email: [cs@panduit.com](mailto:cs@panduit.com)  
or by phone: 800-777-3300

©2016 Panduit Corp.  
ALL RIGHTS RESERVED.  
COSG10--WW-UKE  
12/13/2016