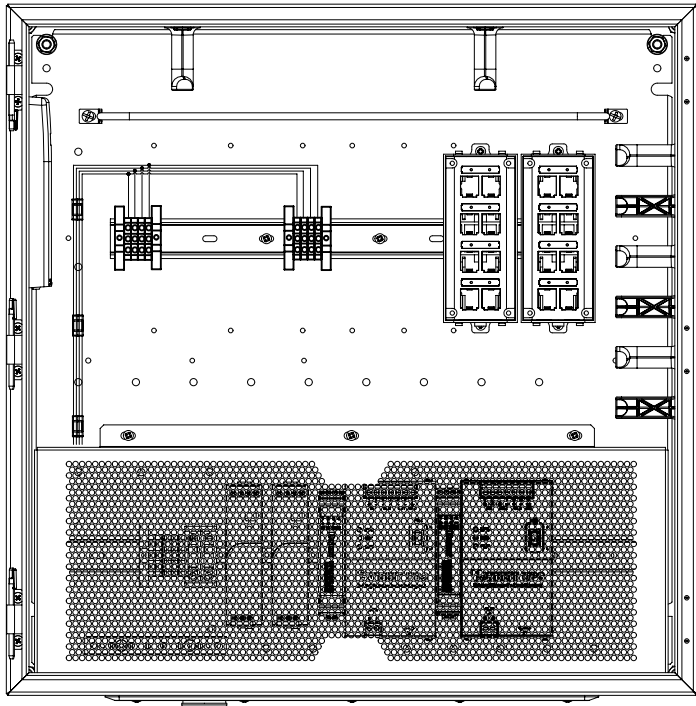


THIS COPY IS PROVIDED ON A RESTRICTED BASIS AND IS NOT TO BE USED IN ANY WAY DETRIMENTAL TO THE INTERESTS OF PANDUIT CORP.

WIDTH	HEIGHT	DEPTH	WEIGHT
24"	24"	12"	90 LBS / 41 KG



PART NUMBER	ENCLOSURE TYPE	NUMBER OF DOWNLINK PATCH CORDS	NUMBER OF UPLINK PATCH CORDS
Z22R-625	316 STAINLESS STEEL	(16) UTP COPPER	(4) OM3 MM FIBER
Z22R-625S	316 STAINLESS STEEL	(16) STP COPPER	(4) OM3 MM FIBER
Z22R-S25	4/12 STEEL	(16) UTP COPPER	(4) OM3 MM FIBER
Z22R-S25S	4/12 STEEL	(16) STP COPPER	(4) OM3 MM FIBER

NOTES:

- Each Switch Ready Zone System includes:
 - (2) Allen-Bradley(TM) 24 Volt DC, 80 Watt Power Supplies.
 - (2) Panduit 24 Volt UPS (UPS003024024015) and Load Sense Module (UPS003LSM).
 - (2) Dedicated 5ft copper patch cords for UPS remote management.
 - (16) 3ft copper patch cords and CAT6 MINI-COM(R) copper modules.
 - 1 meter Fiber optic uplink patch cords with (6) LC fiber optic adapter modules.
 - Fiber Surface Mount Box for Fiber Optic uplink patching.
 - All Cable Management systems pre-installed (including strain relief bars, L-rings and fiber slack spool), protective cover over all AC wiring and devices, and a gland plate for cabling entry and exit.
- All Switch Ready Zone Systems are suitable for use with one or two din rail mount industrial switches.
- All Switch Ready Zone Systems require a 100-250V ac single-phase feed.
- All Switch Ready Zone Systems comply with UL 508A standards, and all have UL type 4/12 and IP66 ratings.
- Electrical components rated for use in Class 1, Division 2 environments.
- The Switch Ready Zone System is wall mountable with the option to use outside-mount flanges which are included.
- 316 Stainless steel enclosures are rated NEMA 4X.
- Steel and 316 stainless steel enclosures are made from 16 gauge steel.

MODEL FILENAME	12V304EK_00.PRT
CAD FILENAME/LAYERS	12V304EK_DC_00A.PRT

PANDUIT CORP. TINLEY PARK, ILLINOIS

Z22R-*25*
NETWORK ZONE SYSTEM

UNLESS OTHERWISE SPECIFIED, DIMENSIONAL TOLERANCES ARE: INCHES X.X +/- 0.06 X.XX +/- 0.03 X.XXX +/- 0.015	[METRIC - MILLIMETER] ANGLE X. +/- 1.5 X.X +/- 0.8 X.XX +/- 0.4 +/- 1°	UNLESS OTHERWISE SPECIFIED, ALL DIMENSIONS ARE GIVEN IN INCHES, THIRD ANGLE PROJECTION.
--	--	---

DRAWN BY RHG	MAT'L: N/A	SCALE 1:8
DATE 1/27/15		DRAWING NO. 12V304EK SHEET 1 OF 1
CHK'D NWW		DWG A SIZE

REV	DATE	BY	CHK	DESCRIPTION	ECN	R	CUST	SUP	OTH
OOA	1/27/15	RHG	NWW	RELEASED TO CUSTOMER	12V304EK				